

SUMMER GUIDE 2023

SUMMER WITH US

US

UNIVERSITY
OF SUSSEX



We are only 9 minutes by train from Brighton, Brighton is 30 minutes by train from London Gatwick airport and 60 minutes from central London.



Vibrant social scene is one of Brighton's main attractions.

Our campus is based in the south of England. Surrounded by the beautiful South Downs National Park, it is minutes away from the popular and bohemian city of Brighton.

WELCOME TO SUMMER AT SUSSEX

Brighton beach is a hot spot not to be missed. With its wide choice of bars, coffee shops, restaurants and live music, there is something for everyone to enjoy.



Lose yourself in Brighton's famous lanes offering independent retailers, alternative shops, unique boutiques, and top-class restaurants.

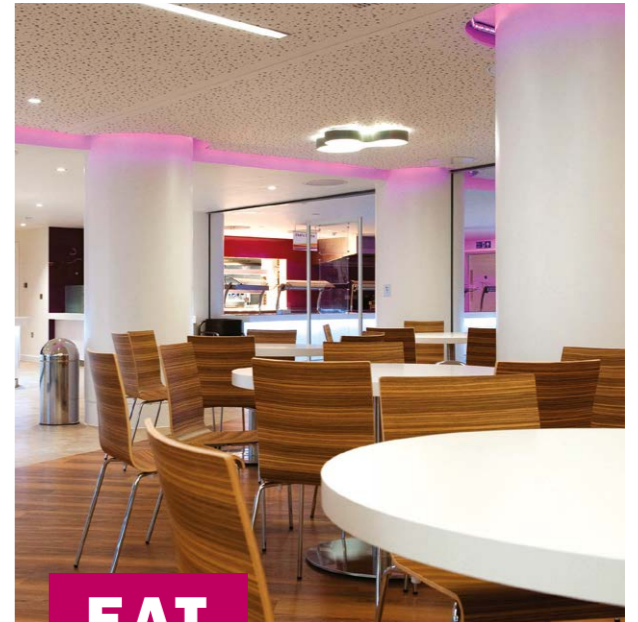


With over 30 years of summer stay business, rest assured that you are in safe and experienced hands when it comes to our campus summer offer



STAY

Stay on campus in one of our many student residences



EAT

The Sussex campus offers a wide choice of places to eat, in a number of different cafes and restaurants



SPORT

Enjoy our extensive on-site sporting facilities

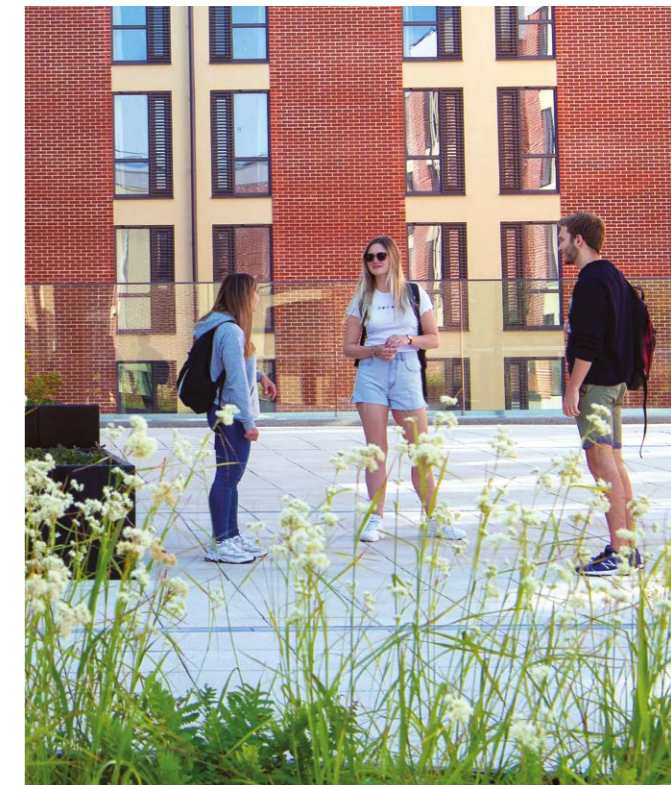


SPACE

Use our multifunctional space to meet, teach, study or train



We're undertaking a major programme of campus development, with new buildings planned for student accommodation, learning and social activities. While our contractors aim to keep any disruption to a minimum, noise and dust from the works may affect flats in buildings near to the development site(s) from time to time. Contact us before booking if you have any queries about possible works on our campus.



Perfect for Summer schools, group holidaymakers, alumni reunions, training camps and conferences.

Flat sizes vary from 5 to 12 bedrooms, depending on the residence. The majority of our summer rooms are en-suite.

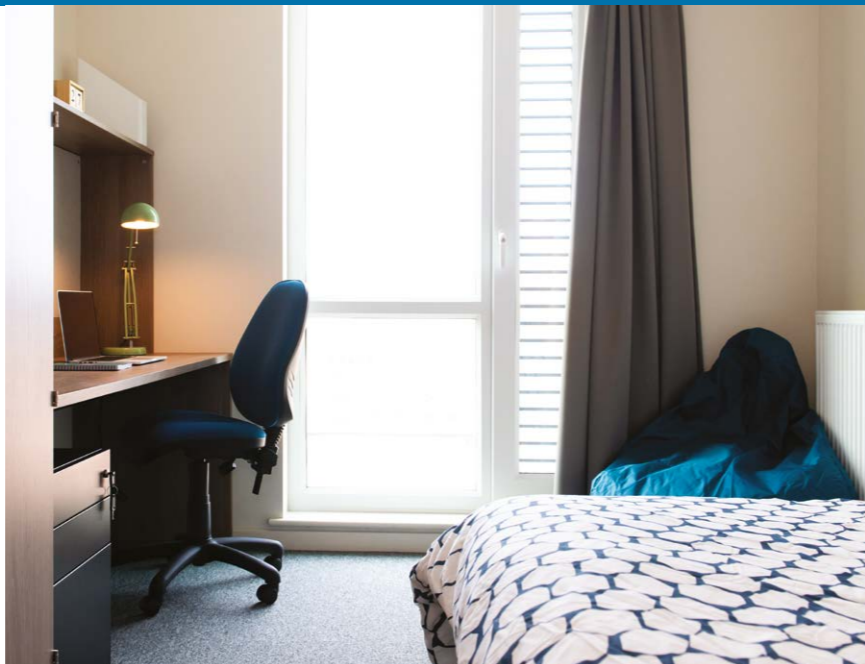
Great value and great experience.

STAY WITH US

We offer a wide variety of accommodation on campus to suit different budgets with approximately 4,000 bedrooms available over the summer.

www.sussex.ac.uk/study/accommodation/holiday

Approximately 4,000 bedrooms available in July and August.



There are three 24 hour receptions.



EAT



Multiple cafes across campus

Our campus cafes and restaurants offer a wide range of catering throughout the day, we have the whole day covered, from our delicious home cooked breakfast, grab and go lunch time offers including our branded Tortilla burritos bar, through to a wide range of evening meals.

Our onsite conference team offer a wide range of hospitality options for conferences and events including: tasty working lunches, hot fork buffets and three course sit down dinners.

www.spacewithus.co.uk



Our offer includes custom conference dining packages.



Summer School groups can choose from our different dining packages.

SPORT



Variety of sports halls and courts.

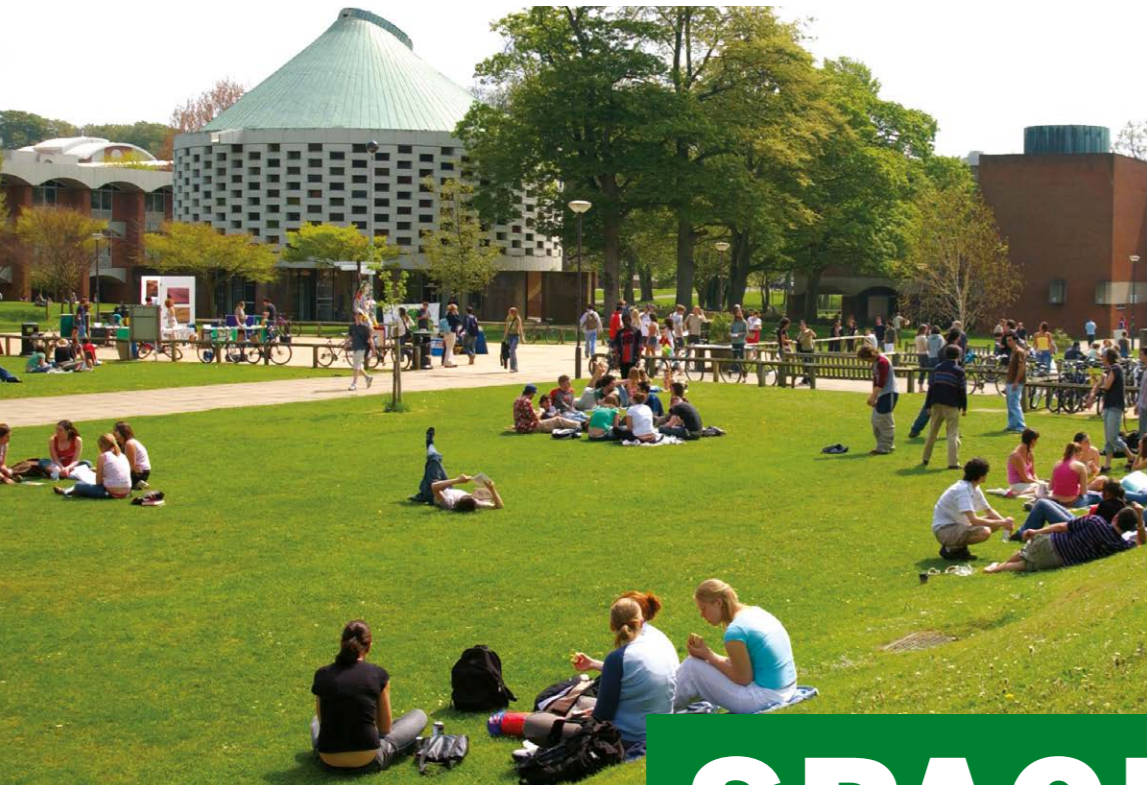
Two sports facilities on campus: Sport Centre for indoor sports and the Falmer Sports Complex with outdoor courts, pitches, as well as indoor fitness rooms.

www.sussex.ac.uk/sport/

Grass and all-weather pitches.



Industry-leading sports equipment.



Abundance of stylish state of the art lecture theatres and green outdoor spaces.

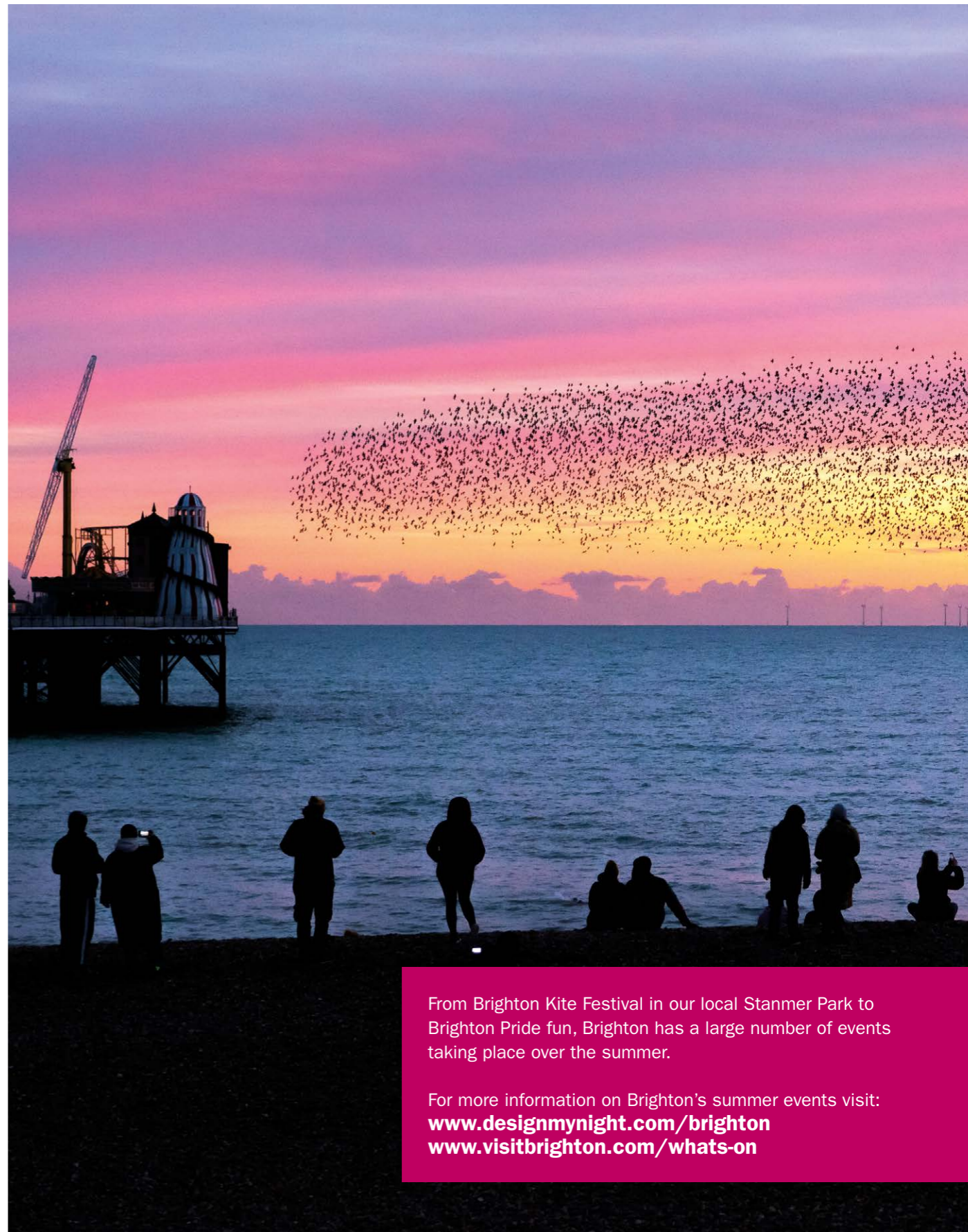
SPACE

Over 250 spaces to meet, teach, study and network topped up with plenty of outdoor space available for a team building day or a summer BBQ party!

www.spacewithus.co.uk



Ideal for meetings, networking, receptions, private dinners, corporate events & exhibitions.



From Brighton Kite Festival in our local Stanmer Park to Brighton Pride fun, Brighton has a large number of events taking place over the summer.

For more information on Brighton's summer events visit:
www.designmynight.com/brighton
www.visitbrighton.com/whats-on

SUMMER GUIDE 2023

University of Sussex
Bramber House
Falmer, Brighton BN1 9QU

SUMMER BOOKINGS

summerbookings@sussex.ac.uk
www.sussex.ac.uk/study/accommodation/holiday



UNIVERSITY
OF SUSSEX