

January 2023						February 2023					
Week	1	2	3	4	5	Week	5	6	7	8	9
Monday	2	9	16	23	30	Monday		6	13	20	27
Tuesday	3	10	17	24	31	Tuesday		7	14	21	28
Wednesday	4	11	18	25		Wednesday	1	8	15	22	
Thursday	5	12	19	26		Thursday	2	9	16	23	
Friday	6	13	20	27		Friday	3	10	17	24	

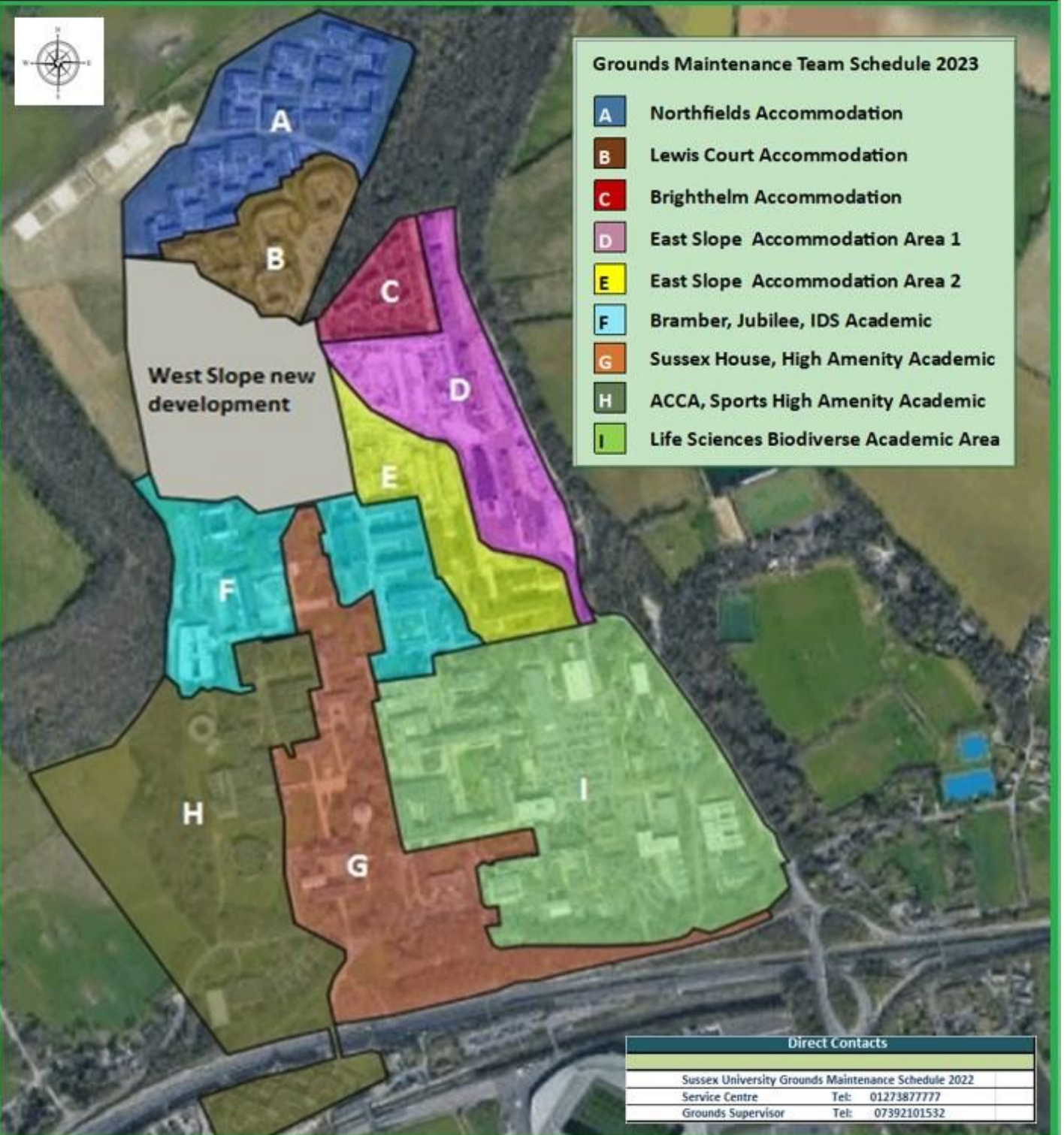
March 2023						April 2023					
Week	9	10	11	12	13	Week	14	15	16	17	
Monday		6	13	20	27	Monday	3	BH	17	24	
Tuesday		7	14	21	28	Tuesday	4	11	18	25	
Wednesday	1	8	15	22	29	Wednesday	5	12	19	26	
Thursday	2	9	16	23	30	Thursday	6	13	20	27	
Friday	3	10	17	24	31	Friday	BH	14	21	28	

May 2023						June 2023					
Week	18	19	20	21	22	Week	22	23	24	25	26
Monday	BH	BH	15	22	BH	Monday		5	12	19	26
Tuesday	2	9	16	23	30	Tuesday		6	13	20	27
Wednesday	3	10	17	24	31	Wednesday		7	14	21	28
Thursday	4	11	18	25		Thursday	1	8	15	22	29
Friday	5	12	19	26		Friday	2	9	16	23	30

July 2023						Aug 2023					
Week	27	28	29	30	31	Week	31	32	33	34	35
Monday	3	10	17	24	31	Monday		7	14	21	BH
Tuesday	4	11	18	25		Tuesday	1	8	15	22	29
Wednesday	5	12	19	26		Wednesday	2	9	16	23	30
Thursday	6	13	20	27		Thursday	3	10	17	24	31
Friday	7	14	21	28		Friday	4	11	18	25	

September 2023						October 2023					
Week	35	36	37	38	39	Week	40	41	42	43	44
Monday		4	11	18	25	Monday	2	9	16	23	30
Tuesday		5	12	19	26	Tuesday	3	10	17	24	31
Wednesday		6	13	20	27	Wednesday	4	11	18	25	
Thursday		7	14	21	28	Thursday	5	12	19	26	
Friday	1	8	15	22	29	Friday	6	13	20	27	

November 2023						December 2023					
Week	44	45	46	47	48	Week	48	49	50	51	52
Monday		6	13	20	27	Monday		4	11	18	BH
Tuesday		7	14	21	28	Tuesday		5	12	19	BH
Wednesday	1	8	15	22	29	Wednesday		6	13	20	27
Thursday	2	9	16	23	30	Thursday		7	14	21	28
Friday	3	10	17	24		Friday	1	8	15	22	29



Grounds Maintenance Team Schedule 2023

A	Northfields Accommodation
B	Lewis Court Accommodation
C	Brighelm Accommodation
D	East Slope Accommodation Area 1
E	East Slope Accommodation Area 2
F	Bramber, Jubilee, IDS Academic
G	Sussex House, High Amenity Academic
H	ACCA, Sports High Amenity Academic
I	Life Sciences Biodiverse Academic Area

Direct Contacts	
Sussex University Grounds Maintenance Schedule 2022	
Service Centre	Tel: 01273877777
Grounds Supervisor	Tel: 07392101532