

# WIRELESS MICROPHONE USAGE ON CAMPUS

## UNIVERSITY OF SUSSEX

### DISCLAIMER

The University of Sussex holds a license for TV Channel 38, that is any frequency between 606.500 and 613.500. If you are operating University equipment in the UK beyond this frequency range without the appropriate permit/license, you are doing so illegally.

The license the University holds for Channel 38 is on a shared non-protective basis. This means other individuals or groups also have access to the frequencies on Channel 38. For further information: <https://www.ofcom.org.uk/manage-your-licence/radiocommunication-licences/pmse/pmse-technical-info/mics-monitors/shared>

Ensure you do not interfere with other users in the area you are intending to utilise the kit. For the best results, find a clear/empty frequency and do not use two transmitters on the same channel.

#### Usage on Campus:

The I.T. Services operate wireless microphones in several buildings across campus and have reserved the usage of certain frequencies. You must stay at least 250MHz away from these. For example, if channel 607.375 is in use, you must not use any of the frequencies between 607.125 - 607.625 as they could cause interference.

For information on which frequencies are in use where and which frequencies you can use while on campus, please view the map on the next page.

The University of Sussex cannot accept responsibility or liability for how you operate the equipment. Ensure you are familiar with and follow the regulations.

If you don't know how to change the frequency on the wireless microphone kits, please consult the help sheets available on the Technical Services website and/or the video tutorial on the MAHTechServ YouTube channel.

If you require assistance or would like more information, contact the MAH technicians via email (MAHTechServ@sussex.ac.uk) or telephone (+44 1273 873636).

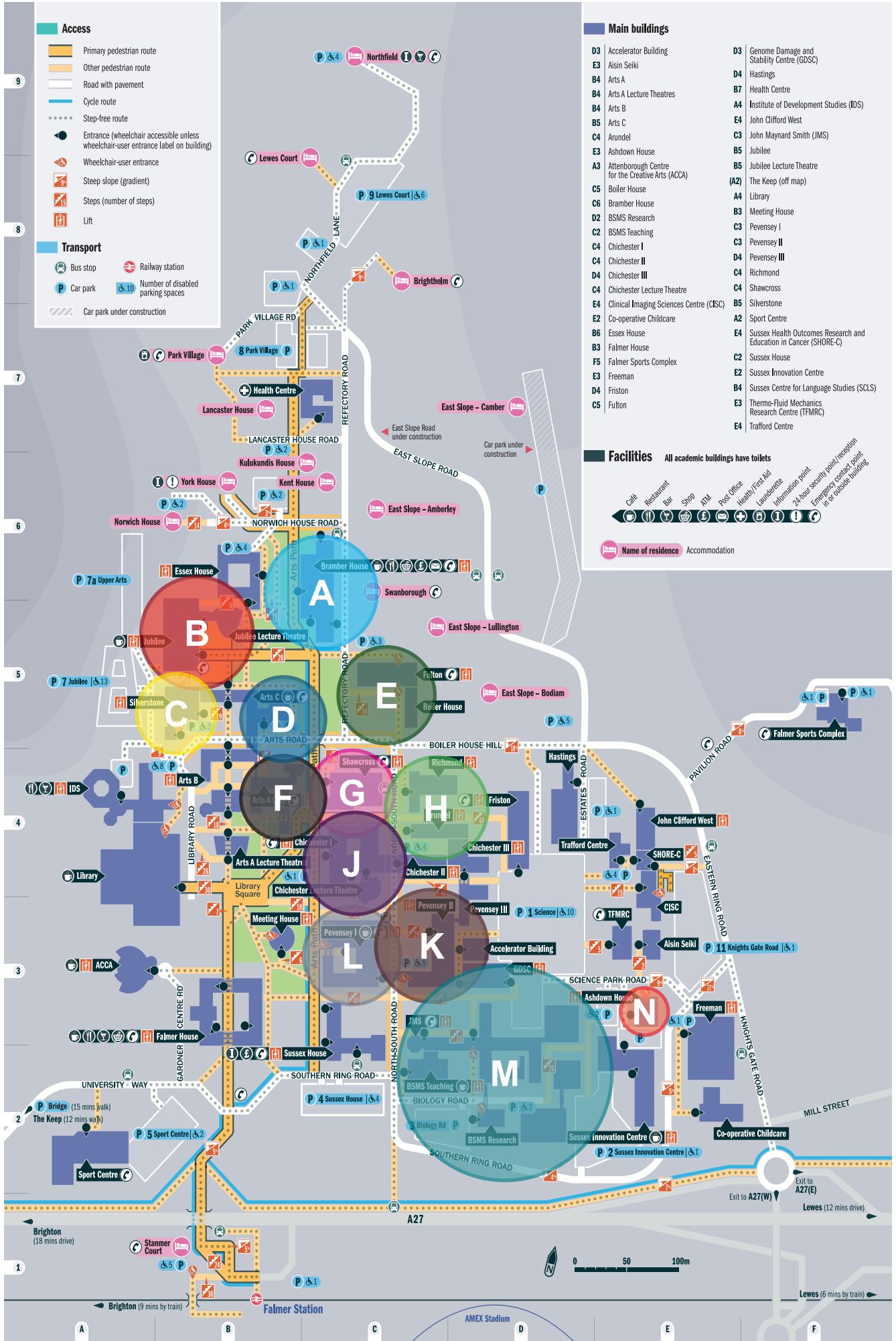
### LIST OF FREQUENCIES IN USE BY I.T. SERVICES (ITS) ON CAMPUS

606.100	607.100	608.000	609.325	610.075	611.000	612.000	613.125
606.475	607.375	608.400	609.625	610.275	611.075	612.025	613.275
606.500	607.600	608.425	609.675	610.400	611.400	612.100	613.450
606.875		608.500	609.775	610.425	611.475	612.800	613.475
606.975		608.525	609.950	610.475	611.600		
		608.925		610.550	611.625		
				610.675			

**YOU MUST STAY MINIMUM 250MHz  
AWAY FROM ANY FREQUENCY IN USE  
BY ITS IN A SPECIFIC AREA. \***

**LEGAL RANGE ON CHANNEL 38:  
606.500MHZ – 613.500MHZ**

# University of Sussex Campus Map



# Frequencies **in use** by ITS in each area

## **A: LIGHT BLUE BRAMBER HOUSE**

FREQUENCIES IN USE:

606.500  
606.875  
607.375  
608.000  
608.425  
609.325  
609.775  
610.475  
611.400  
612.000  
612.800  
613.275

**A**

## **B: RED JUBILEE**

FREQUENCIES IN USE:

606.875  
608.425  
611.400  
613.275

**B**

## **C: YELLOW SILVERSTONE**

FREQUENCIES IN USE:

606.500  
607.375  
608.000  
609.775  
610.425  
612.000

**C**

## **E: DARK GREEN FULTON**

FREQUENCIES IN USE:

606.100  
606.475  
606.975  
607.600  
608.000  
608.525  
609.675  
609.950  
610.275  
610.550  
611.075  
611.625  
613.450

**E**

## **F: BLACK ARTS A**

FREQUENCIES IN USE:

610.475  
611.000  
611.400  
612.000

**F**

## **D: DARK BLUE ARTS C**

FREQUENCIES IN USE:

607.375  
609.325  
611.000  
612.800

**D**

## **G: PINK SHAWCROSS**

FREQUENCIES IN USE:

608.425  
611.000  
611.400  
612.100  
612.800  
613.475

**G**

## **K: BROWN PEVENSEY II**

FREQUENCIES IN USE:

610.075  
612.025

**K**

## **H: LIGHT GREEN RICHMOND & ARUNDEL**

FREQUENCIES IN USE:

606.500  
606.875  
607.375  
608.000  
609.325  
609.775  
610.400  
612.100  
613.275  
613.475

**H**

## **J: PURPLE CHICHESTER**

FREQUENCIES IN USE:

607.375  
608.400  
608.925  
609.325  
610.675  
611.000  
612.000

**J**

## **N: ORANGE ASHDOWN HOUSE**

FREQUENCIES IN USE:

611.600

**N**

## **L: GREY PEVENSEY I**

FREQUENCIES IN USE:

606.500  
606.875  
607.375  
608.000  
608.400  
608.925  
609.625  
610.675  
611.475  
613.125

**L**

## **M: TURQUOISE JMS & BSMS**

FREQUENCIES IN USE:

606.500  
607.100  
608.000  
608.500  
609.325  
610.475  
611.000  
611.400  
612.000  
612.800

**M**

**AVOID USING THE FREQUENCIES LISTED HERE IN THE AREAS LISTED.**

**SEE THE FOLLOWING PAGE FOR RANGES OF WHICH FREQUENCIES YOU CAN USE WHERE.**

\*the letter "I" has been skipped to avoid confusion with the number "1".

# Frequencies available for use in each area

## **A: LIGHT BLUE BRAMBER HOUSE**

you can use any frequencies between the following ranges:

607.625 – 607.750  
608.675 – 609.525  
610.025 – 610.225  
610.725 – 611.150  
611.650 – 611.750  
612.250 – 612.550

## **D: DARK BLUE ARTS C**

you can use any frequencies between the following ranges:

606.500 – 607.125  
607.625 – 609.125  
609.575 – 610.750  
611.250 – 612.550  
613.050 – 613.500

## **G: PINK SHAWCROSS**

you can use any frequencies between the following ranges:

606.500 – 608.175  
608.675 – 610.750  
611.650 – 611.850  
612.350 – 612.550  
613.050 – 613.225

## **K: BROWN PEVENSEY II**

you can use any frequency between the following ranges:

606.500 – 609.825  
610.325 – 611.775  
612.275 – 613.500

## **N: ORANGE – ASHDOWN HOUSE**

you can use any frequencies between the following ranges:

606.500 – 611.350  
611.850 – 613.500

## **B: RED JUBILEE**

you can use any frequencies between the following ranges:

607.125 – 607.750  
608.675 – 611.150  
611.650 – 613.025

## **E: DARK GREEN FULTON**

you can use any frequencies between the following ranges:

607.225 – 607.350  
608.775 – 609.425  
610.800 – 610.825  
611.325 – 611.375  
611.875 – 613.200

## **H: LIGHT GREEN RICHMOND & ARUNDEL**

you can use any frequencies between the following ranges:

607.625 – 607.750  
608.250 – 609.075  
610.650 – 611.850  
612.350 – 613.025

## **L: GREY PEVENSEY I**

you can use any frequencies between the following ranges:

607.625 – 607.750  
608.650 – 608.675  
609.125 – 609.375  
609.875 – 610.425  
610.925 – 611.225  
611.725 – 612.875

## **M: TURQUOISE JMS & BSMS**

you can use any frequencies between the following ranges:

607.350 – 607.750  
608.750 – 609.075  
609.575 – 610.225  
610.725 – 610.750  
611.650 – 611.750  
612.250 – 612.550  
613.050 – 613.500

## **C: YELLOW SILVERSTONE**

you can use any frequencies between the following ranges:

606.750 – 607.025  
607.625 – 607.750  
608.250 – 609.525  
610.025 – 610.150  
610.675 – 611.750  
612.250 – 613.500

## **F: BLACK ARTS A**

you can use any frequencies between the following ranges:

606.500 – 610.225  
610.725 – 610.750  
611.650 – 611.750  
612.250 – 613.500

## **J: PURPLE CHICHESTER**

you can use any frequency between the following ranges:

606.500 – 607.025  
607.625 – 608.150  
608.650 – 608.675  
609.575 – 610.425  
611.250 – 611.750  
612.250 – 613.500

**If you are on campus but you are outside the areas listed in this document, you can use any available frequency on channel 38.**

**Please respect other users of the radio frequency spectrum.**