

# GLOBAL ENVIRONMENTAL CHANGE (003GS)

Dr Alexander Antonarakis  
Department of Geography, School of Global Studies





# What's the module about

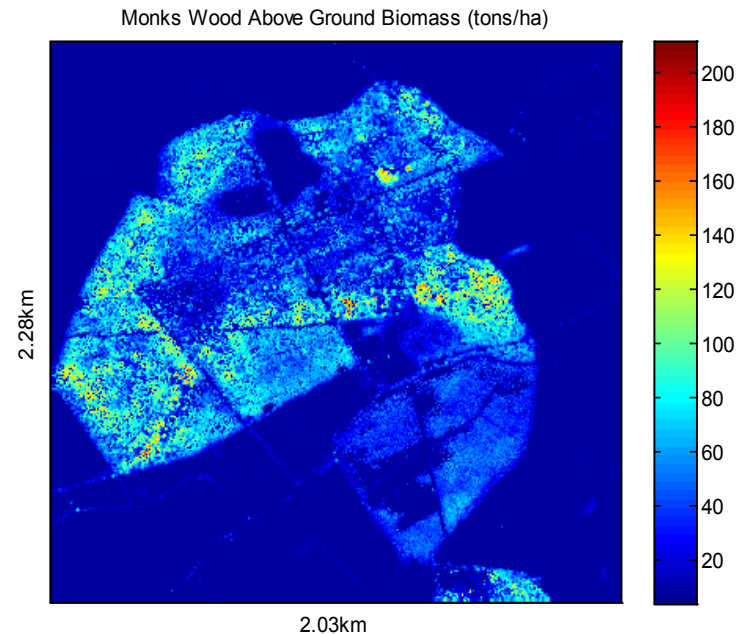
- This module is designed to enable students to understand and use remote sensing datasets to monitor and answer fundamental issues, with serious implications to the social and natural world.
- By the end of the module, students should have gained:
  - Understanding in differing remote sensing technologies and data characteristics.
  - Understanding in how remote sensing can be used to answer scientific questions on environment, society, and climate change.
  - Ability in preparing and analysing digital data using ArcGIS and Matlab.
  - Ability to analyse and evaluate current debates in remote sensing and land change science.

We will monitor and assess changes to the atmosphere, cryosphere (ice), hydrosphere (water), and biosphere (plants)



# How will it be taught

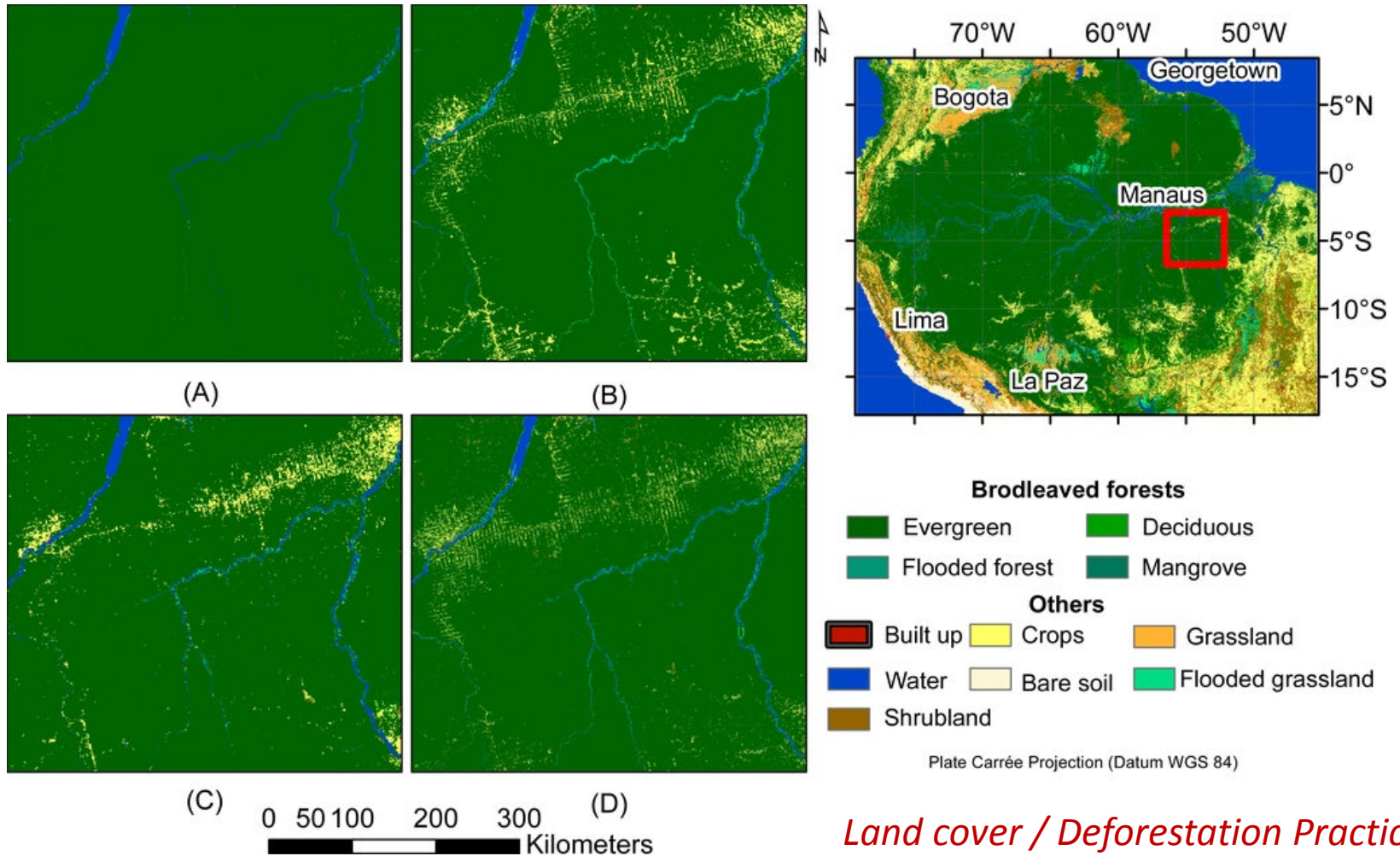
- Weekly 3-4 hour sessions encompassing
  - 6 Seminars
  - 4 Practicals on land cover analysis / aerosols / plant biomass / ice caps
  - 1 Local Field Campaign to collect tree data
- Assessment
  - 10 min presentation (10%)
  - 3 out of 4 practical write-ups 4000 words (90%)



*Biomass Practical Output example*



# Further Example of Practical Work



*Land cover / Deforestation Practical*

# About the convenor



- Dr. Alexander Antonarakis
  - My research is in forest ecology, land use and climate change as well as river flooding. This module really lets me expand on my own interests. I feel the diverse teaching allows students fully understand our changing environments, and what can be done to monitor present situations and how we can predict changes.
- GIS
  - Please do not feel frightened. Second year GIS is set as a prerequisite, but can still come without it. The module is technical enough for you to obtain valuable work skills, and learn fascinating facts about our environment.
- Questions?
  - Email: [a.antonarakis@sussex.ac.uk](mailto:a.antonarakis@sussex.ac.uk) (or see me in my office on Tuesdays 3-4 and Wednesdays 3-4).