

**International Symposium on
Computational Modelling and Analysis of Vehicle Body Noise and Vibration
University of Sussex - 27th/28th March 2012.**

**Author instructions for preparation
of Abstracts and Full-Papers**

Both the abstract (to be considered for the Symposium), and the subsequent full-paper, should be **written in English** and submitted in pdf format, adhering to the same font details and page layout. The font should be 12-point, Times New Roman, unless otherwise stated. The text should be single-spaced. The page layout for both the abstract, and full paper, should be A4 size with a 20 mm margin left and right, and a 25 mm margin top and bottom.

ABSTRACT PREPARATION

Abstracts (including any references) should in total be presented on **no more than 1 side of A4**. The abstract page should start with a running title at the top of the page (in font size = 10-point) as follows:

**International Symposium on Computational Modelling and Analysis of Vehicle Body Noise and Vibration
University of Sussex - 27th/28th March 2012.**

The information should then take the following form:

TITLE (14 point - bold)

**Author-1, Initials, Author-2, Initials, and Author-3, Initials.
Author addresses and affiliations
E-mail address of corresponding author**

ABSTRACT OF PAPER

Followed by text of the abstract, and a reference section (if appropriate)

End Abstract instructions

FULL PAPER PREPARATION INSTRUCTIONS

Full papers should be absolutely no more than 10 pages in length, including figures and references. The instructions below give the relative positions of the title, abstract, and subsequent main sections:

THE TITLE SHOULD START AT TOP OF PAGE (i.e 25 mm from top edge)
TIMES NEW ROMAN 14 POINT FONT, BOLD AND CENTRED

Author 1 Initials, Author 2, Initials and Author 3, Initials
Author addresses and affiliations
E-mail address of corresponding author

Leave 20 mm space between bottom of address section and abstract

ABSTRACT

Leave 2 line spaces between the end of the abstract and the start of the introduction, and similarly two spaces between the end of a section and all subsequent sections.

1 PAPER LENGTH AND GENERAL INFORMATION

Page numbers should be in 12-point included centrally 10 mm from the bottom of each page.

Main Section headings should be bold and upper-case and numbered (as shown above).

Leave one line space between main section headings and the start of the paragraph.

Sub-section headings should be numbered (eg 1.1, 1.2 etc) in lower-case, bold, but with no line space left before the start of the paragraph.

Acknowledgements should not be numbered.

References should be cited in the text using square brackets (e.g. [1]) and multiple references separated by comma (e.g. [2,3]). Reference should be numbered in the text in the order in which they appear. The reference convention is shown as follows:

REFERENCES

[1] A. Keane, W. Price, (Eds) *Statistical Energy Analysis*, (1997) Cambridge University Press.

[2] V. Cotoni, R. Langley, M. Kidner, Numerical and experimental validation of variance prediction in the statistical energy analysis of built-up systems, *Journal of Sound and Vibration* 288 (2005) 701-728.

[3] O. Gianni, M. Hanss, Model reduction for uncertainty quantification of mechanical structures by component mode synthesis method, The 9th International Conference on Recent Advances in Structural Dynamics Southampton (2006).

2 EQUATIONS

Equations should appear in 12 point, centrally justified, and numbered in the order in which they appear as follows:

$$\ddot{y} + F(y, \dot{y}) = f(t) \quad (1)$$

and

$$e(y_i(t)) = s_1(y_i) - s_2(y_i) \quad (2)$$

3 FIGURES

Figures should be identified in the text using the form Fig. 1, Fig. 2 etc. followed by the caption. The Caption should be in 11-point, bold. Figures should be positioned in the text as close to where they are referred to. Leave one line space between the figure and the caption, and leave 2 spaces between the caption and the start of the paragraph.

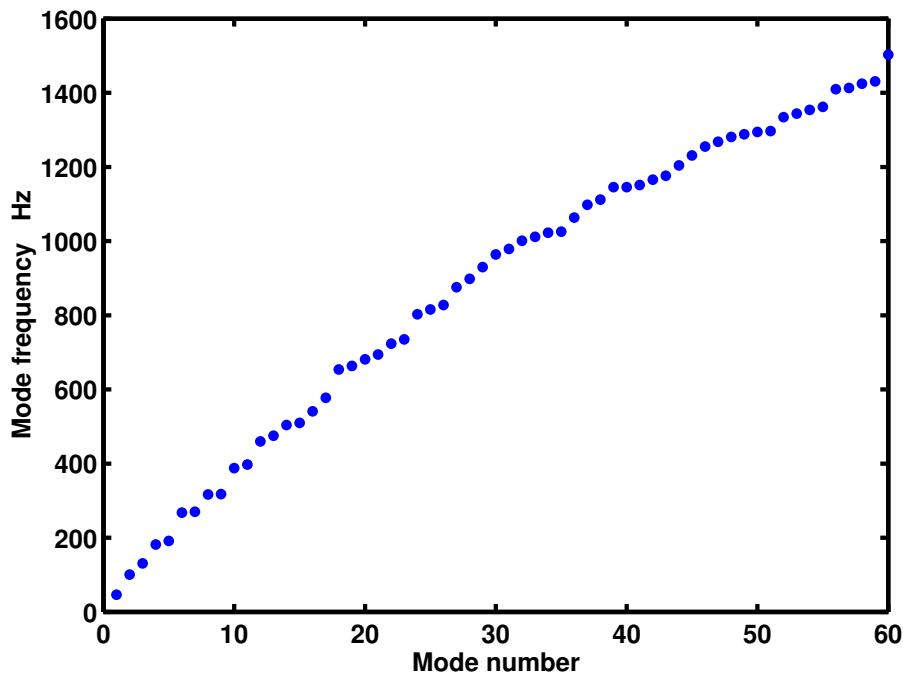


Fig. 1: Baseline mode frequencies for the grillage structure

Note: If colour is used in figures, it is essential to ensure that figures are still meaningful when printed in black and white.

4 TABLES

Tables should be identified in the text using the form Table 1., Table 2., etc., followed by the caption. The Caption should be in 11-point, bold. Tables should be positioned in the text as close to where they are referred to. Leave one line space between the Table and the caption, and leave 2 spaces between the caption and the start of the paragraph.