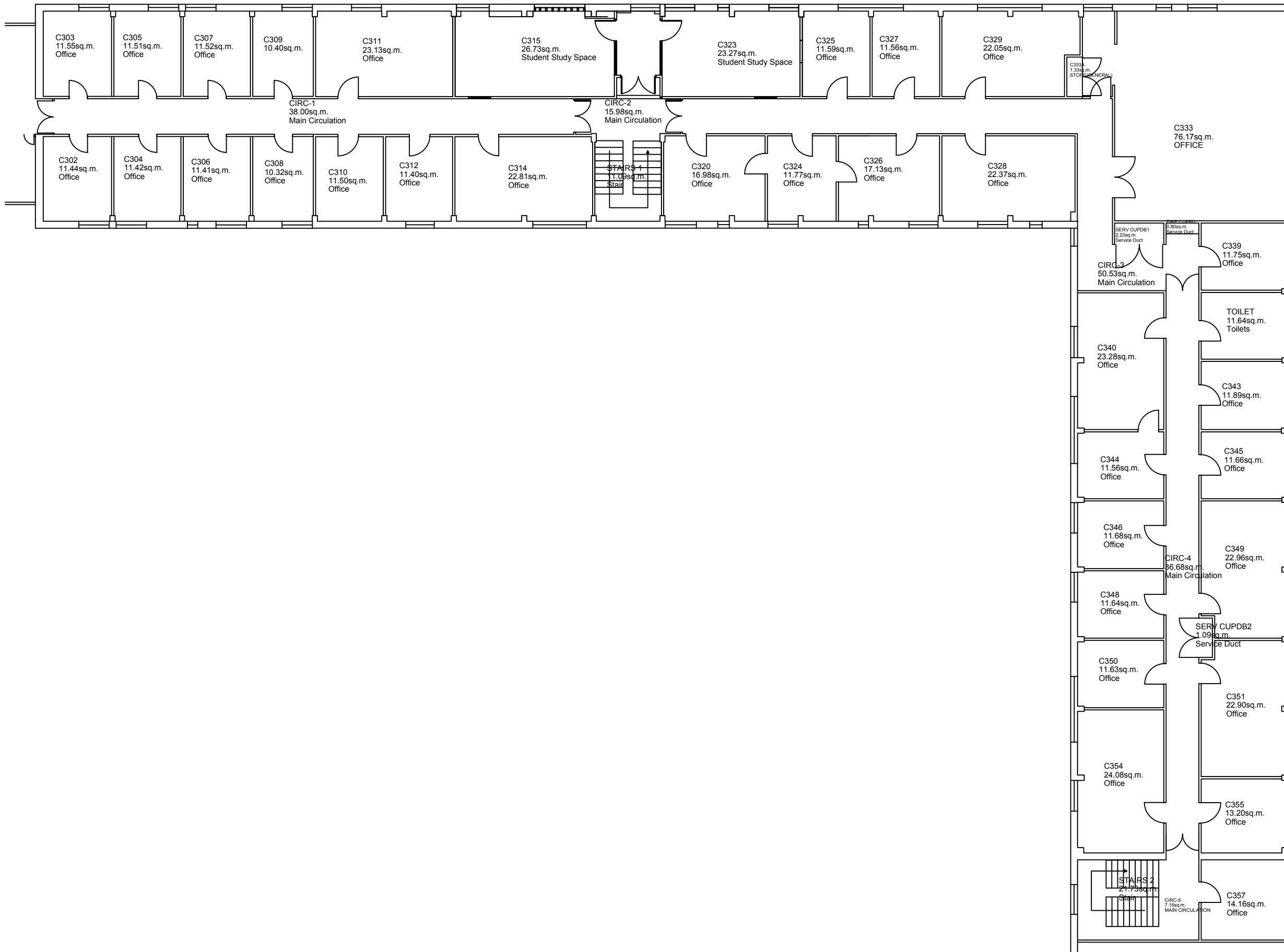


GROSS AREA
851.85sq.m.

General Notes:



Status:	
EXISTING FLOOR PLAN	
Description:	
<i>n/a</i>	
Building:	
Arts Building C	
Title:	
GENERAL LAYOUT	
Floor Level:	Site Level:
3	D
Drawing No. (ref):	Revision:
ARTSC-3	n/a
Scale:	Sheet:
NTS	1/1
Drawn by:	Date:
A.Verden	SEP 2017