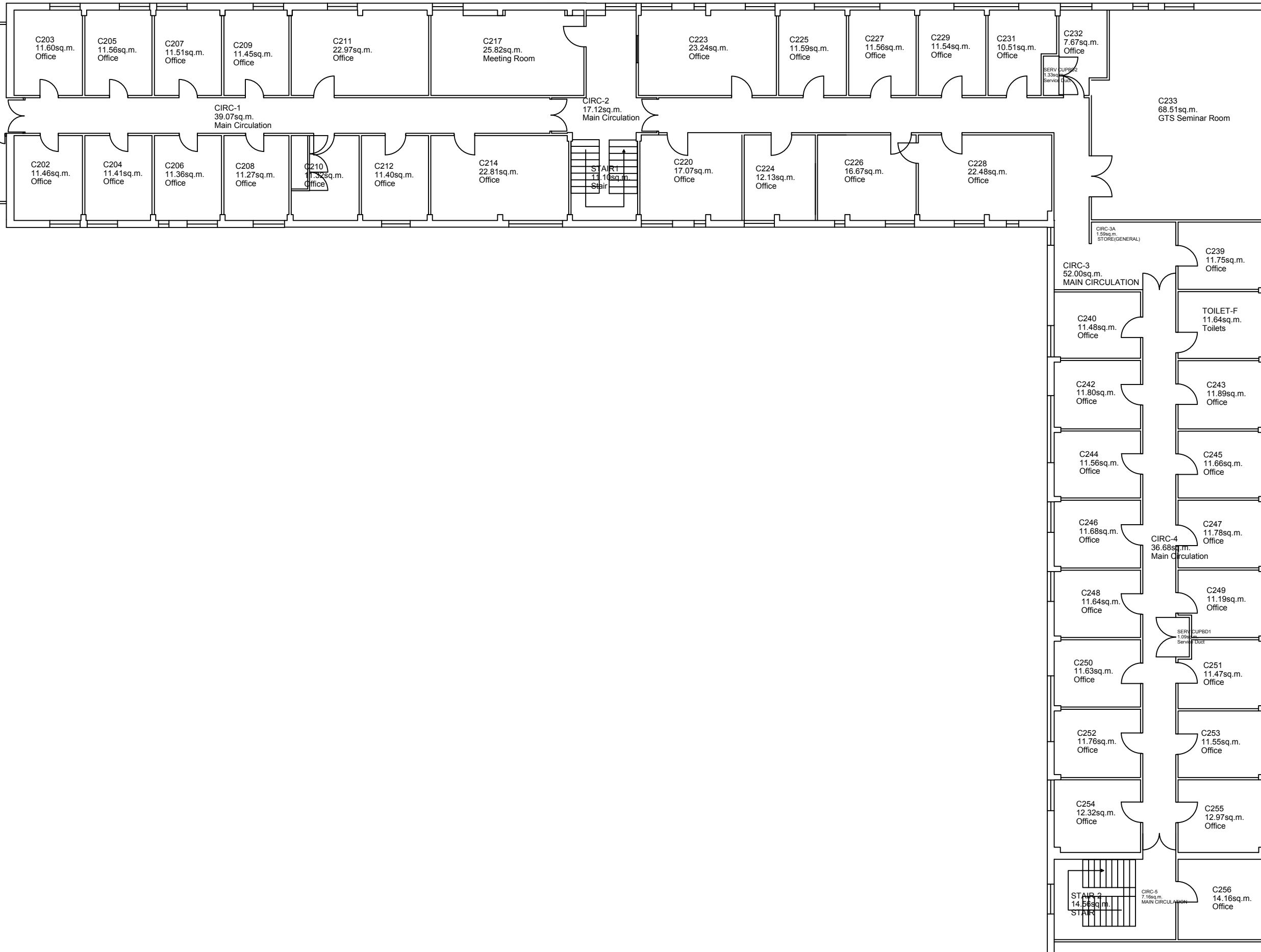


GROSS AREA
853.82sq.m.

General Notes:
-



Status: EXISTING FLOOR PLAN	
Description: <i>n/a</i>	
Building: Arts Building C	
Title: GENERAL LAYOUT	
Floor Level: 2	Site Level: C
Drawing No. (ref): ARTSC-2	Revision: <i>n/a</i>
Scale: NTS	Sheet: 1/1
Drawn by: A.Verden	Date: SEP 2017