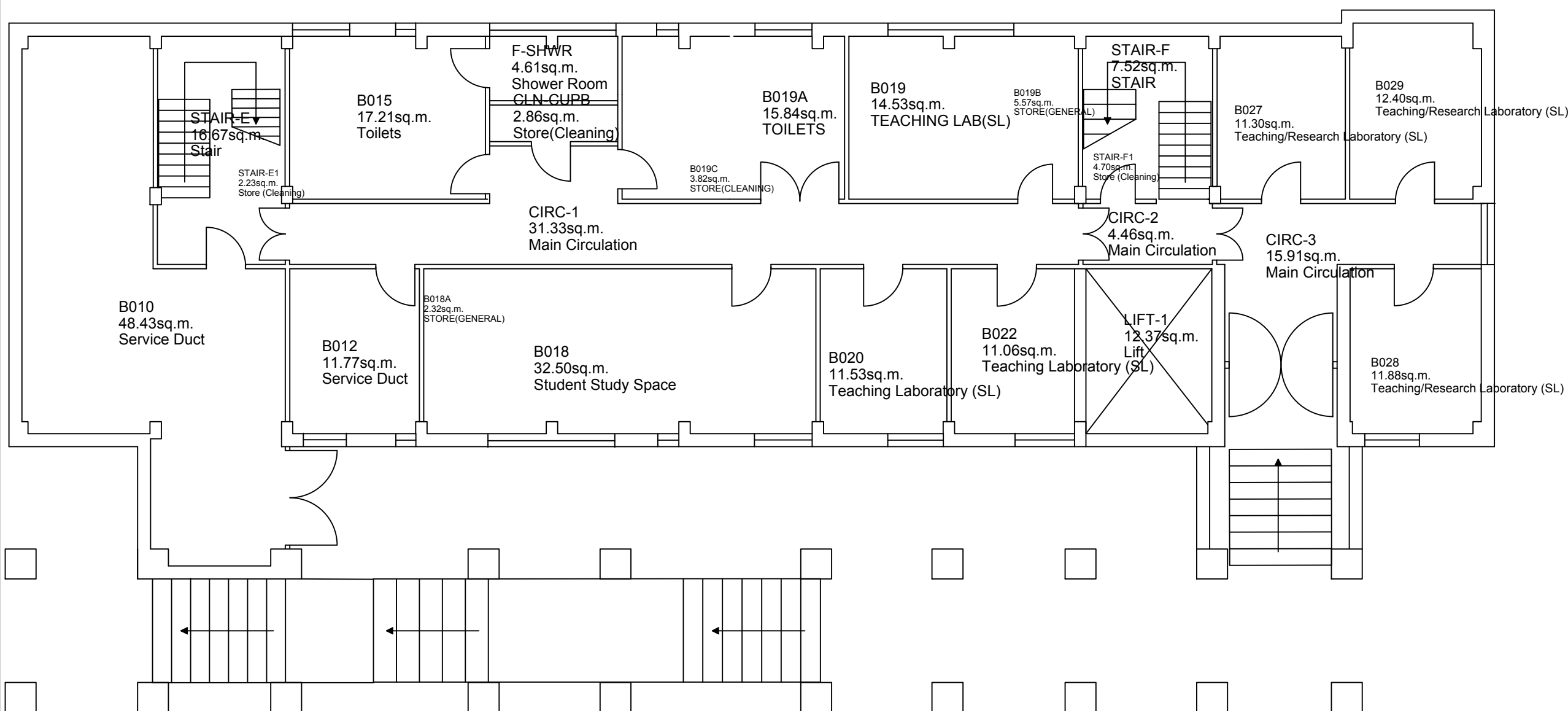


General Notes:

-

GROSS AREA  
355.61sq.m.



Status: <b>EXISTING FLOOR PLAN</b>	
Description: <i>n/a</i>	
Building: <b>Arts Building B</b>	
Title: <b>GENERAL LAYOUT</b>	
Floor Level: <b>0</b>	Site Level: <b>A</b>
Drawing No. (ref): <b>ARTSB-0</b>	Revision: <b>n/a</b>
Scale: <b>NTS</b>	Sheet: <b>1/1</b>
Drawn by: <b>A. Verden</b>	Date: <b>SEP 2017</b>