

# Fire Evacuation Plan

## Pevensey I Level 1

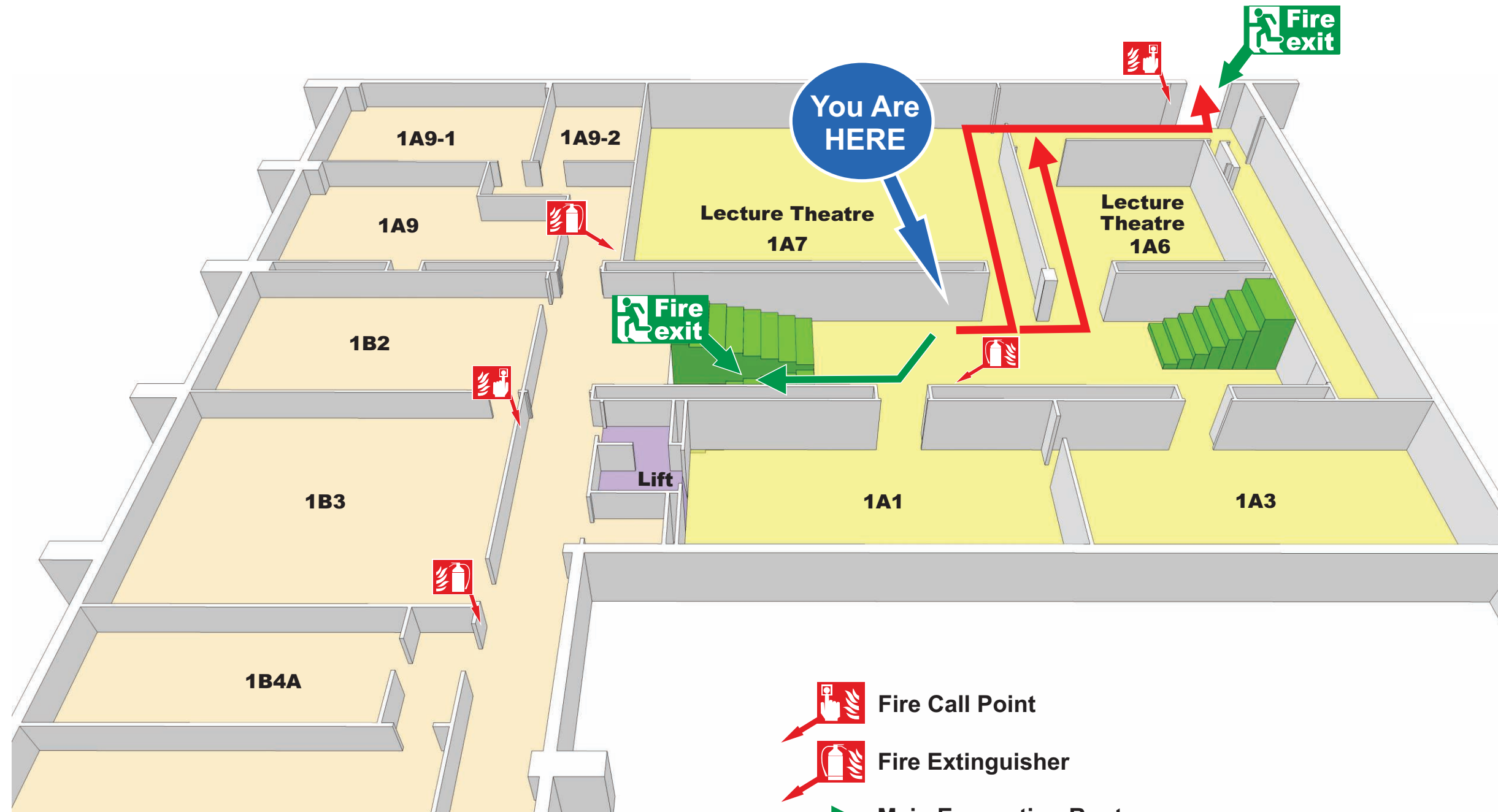


### Welcome to our Department

Please take a moment to familiarise yourself with the exit routes and fire procedures should you need to evacuate quickly. If the alarm does sound, leave the building by the nearest exit.







# Fire Evacuation Plan

## Pevensey I Level 1



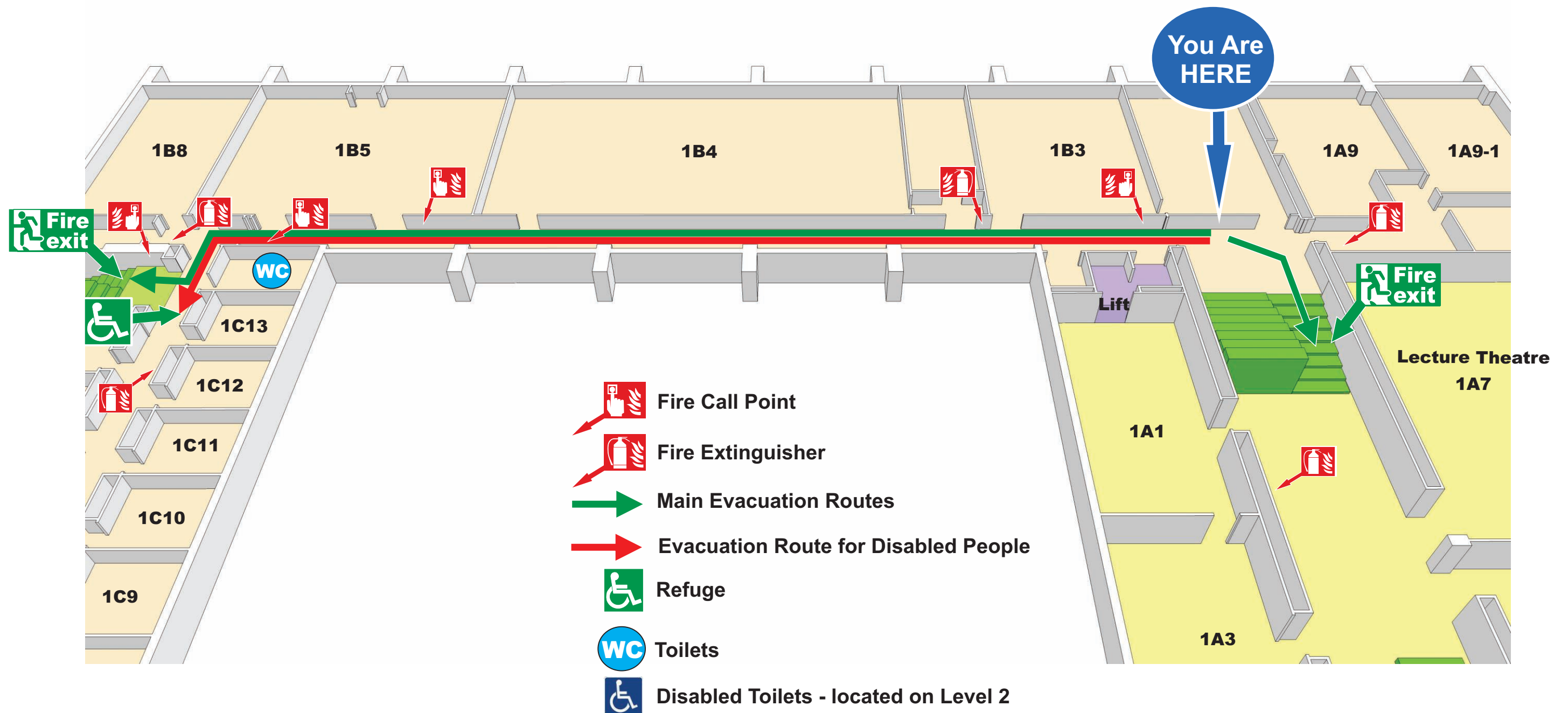
### Welcome to our Department

Please take a moment to familiarise yourself with the exit routes and fire procedures should you need to evacuate quickly. If the alarm does sound, leave the building by the nearest exit.

-  Fire Call Point
-  Fire Extinguisher
-  Main Evacuation Routes
-  Evacuation Route for Disabled People
-  Toilets
-  Disabled Toilets - located on Level 2

# Fire Evacuation Plan

## Pevensey I Level 1



### Welcome to our Department

Please take a moment to familiarise yourself with the exit routes and fire procedures should you need to evacuate quickly. If the alarm does sound, leave the building by the nearest exit.