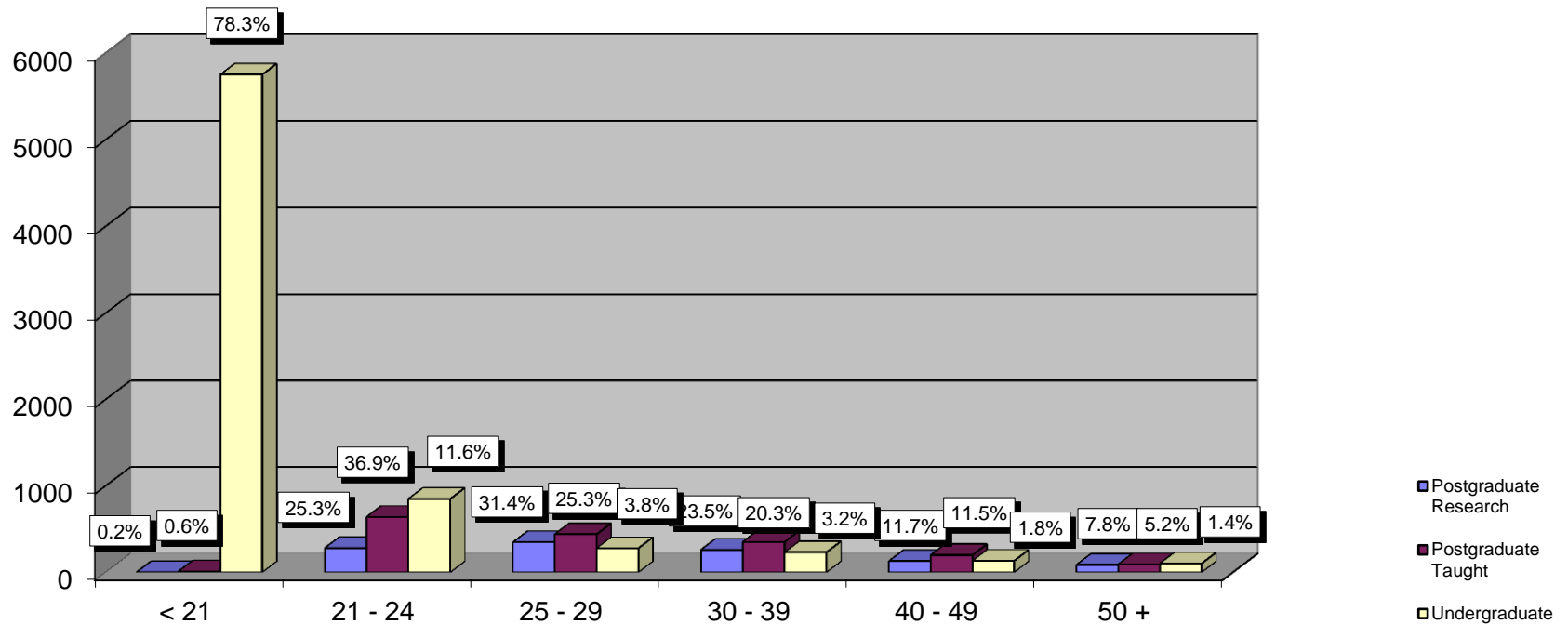


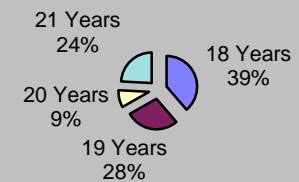
# Age on Entry Analysis

## Age on Entry Analysis



	< 21	%	21 - 24	%	25 - 29	%	30 - 39	%	40 - 49	%	50 +	%	Total	%
Postgraduate Research	2	0.2	281	25.3	348	31.4	261	23.5	130	11.7	87	7.8	1109	10.9
Postgraduate Taught	11	0.6	440	36.9	440	25.3	353	20.3	200	11.5	91	5.2	1736	17.0
Undergraduate	5750	78.3	850	11.6	279	3.8	232	3.2	133	1.8	102	1.4	7346	72.1
<b>Total University</b>	<b>5763</b>	<b>56.5</b>	<b>1772</b>	<b>17.4</b>	<b>1067</b>	<b>10.5</b>	<b>846</b>	<b>8.3</b>	<b>463</b>	<b>4.5</b>	<b>280</b>	<b>2.7</b>	<b>10191</b>	

### Undergraduates Under 21



Undergraduate Under 21 Analysis includes CCE Part Time Degrees and V&E.  
These figures exclude CCE sub degree students

