



Return to campus

Autumn 2020

Q&A - Text code **INTERNALCOMMS**
to **07480 781235**
and then text your question

Or post a question via www.pollev.com/internalcomms

US

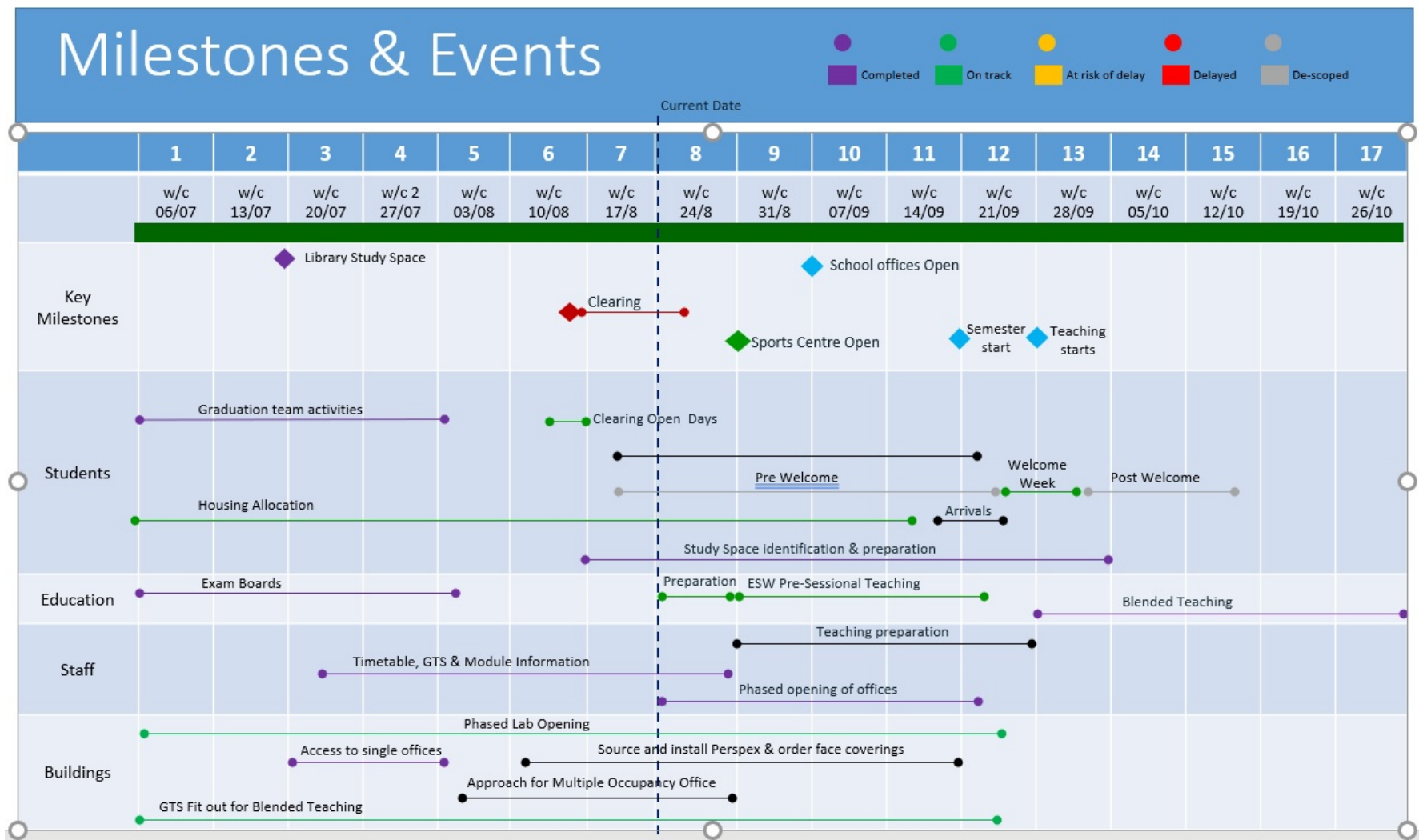
UNIVERSITY
OF SUSSEX

Q&A

Text code **INTERNALCOMMS**
to **07480 781235**
and then text your question

Or post a question via
www.pollev.com/internalcomms

Phased campus reopening



Our aims



Student arrivals



Welcome Week



Teaching



Study spaces



Health and safety

Staying safe on campus



**Maintain safe social distancing
from others around you**



**Please clean your hands when you enter a
building, using the hand sanitiser provided**



**Some areas may have occupancy limits
to help prevent unsafe contact**

If you experience any of these COVID-19 symptoms,
please self-isolate at home and call NHS 111 if your symptoms
don't improve after five days



**New continuous
cough**



**Shortness of
breath**



**High fever or
temperature**

Cleaning and hygiene



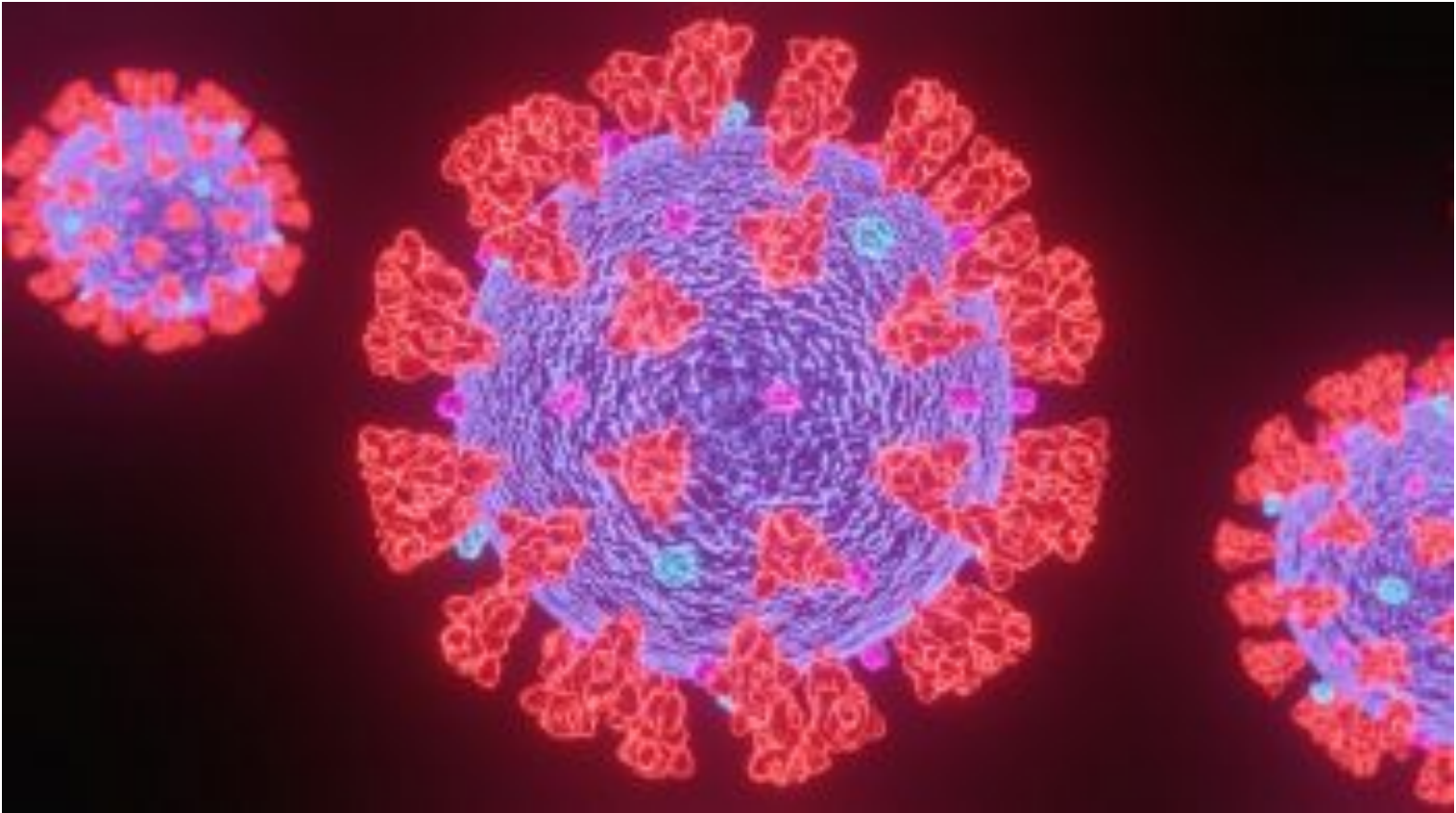
Physical distancing



Face coverings



Covid testing and reporting

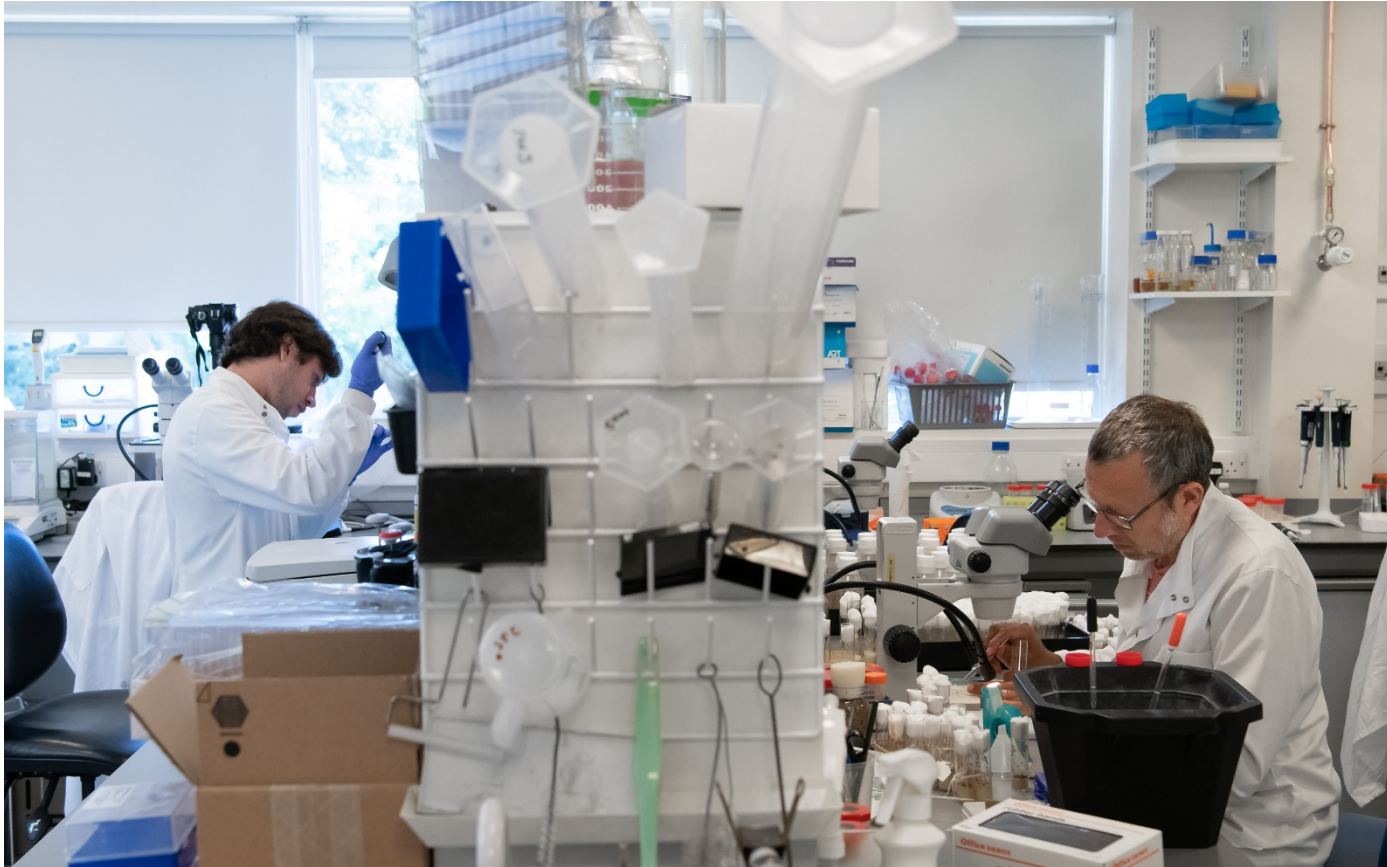


Supporting staff during Covid

US

UNIVERSITY
OF SUSSEX

Staff returning to campus



Essential roles



Staff with risk factors



Staff with caring responsibilities



Raising concerns



Flexible Sussex



Mental health and wellbeing



What's next?

1. Review of objectives (self-assessment by the reviewee)

My objectives	Outcome / Achievement (If your department uses a rating system, please self-assess here using that rating or competency system. You may wish to report whether you have fully met, mostly met, partially met or been unable to achieve an objective).
1.	
2.	
3.	
4.	
5.	
Which Sussex Values have you displayed and how?	

Q&A

Text code **INTERNALCOMMS**
to **07480 781235**
and then text your question

Or post a question to
www.pollev.com/internalcomms