



Developing appropriate data collection and visualisation tools for communities with limited literacy



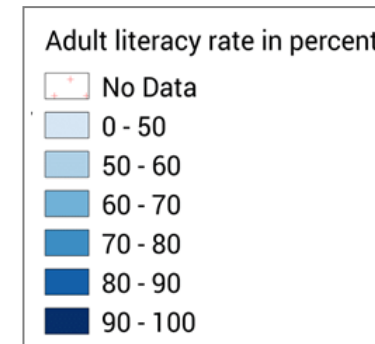
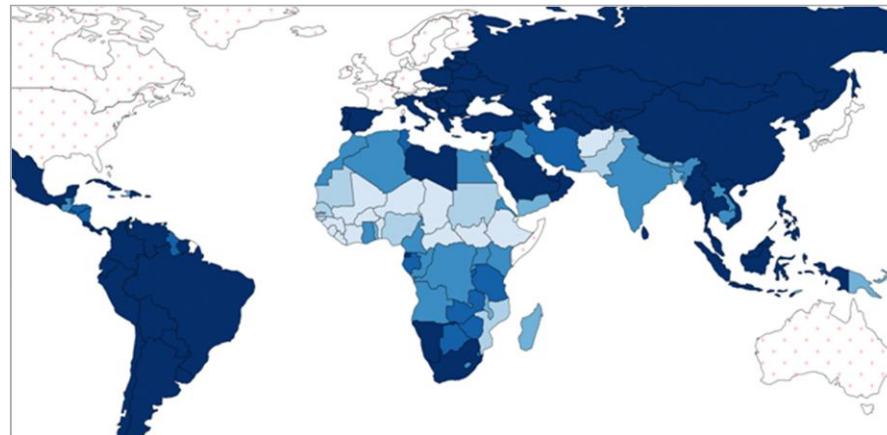
Marcos Moreu

MPhil/PhD Student



ExCiteS research group - participants

- Most of the communities we work with:
 - have **low levels of literacy** (both print and digital).
 - are also often **politically and economically marginalised**.
- Our work has often focused on tackling the specific issues that these communities face, and helping to put **protocols** in place that **protect** and **empower** the people who end up using the tools we **co-create** with them.



Source: UNESCO, 2015



ExCiteS research group - projects

- Illegal logging activity in the Congo
- Illegal poaching in Cameroon
- Illegal grazing and conservation in Namibia
- Water scarcity in Israel and Palestine
- Climate variation in Ghana
- In **Brazil**, growth of informal settlements, and hunting and fishing practices in the Amazon
- In **Kenya**, farming challenges in EMC county, and plant species distribution in Maasai's land
- Air quality monitoring and wheelchair user accessibility around London, **UK**



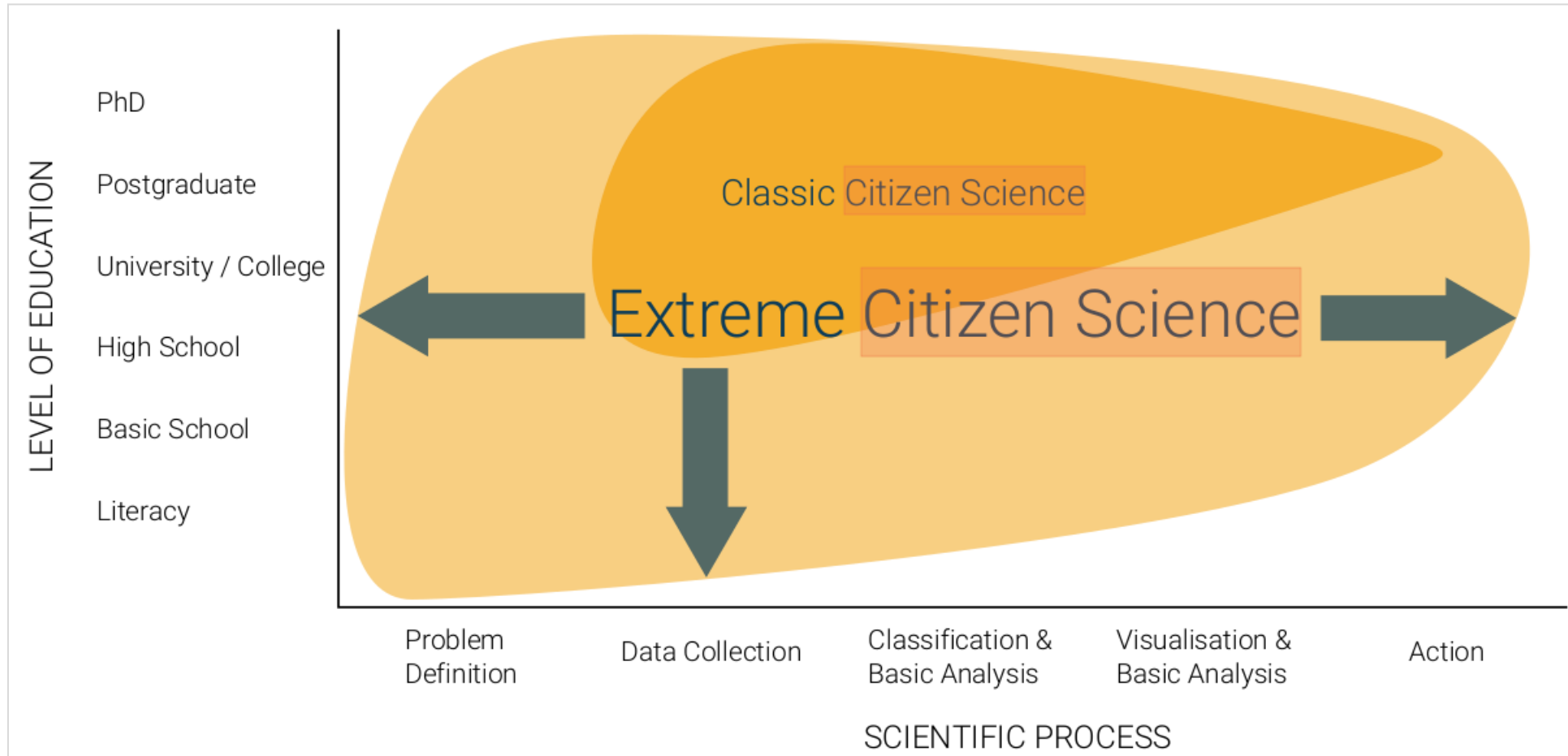


Citizen Science and Extreme Citizen Science

Citizen science is understood as **scientific activities** in which **non-professional scientists** ('citizens') participate in data collection (and sometimes data processing, by supplying brain or computing power) within a scientific project (Haklay, 2013).

Extreme Citizen Science is defined as a situated, **bottom-up** practice that takes into account **local needs, practices** and **culture** and works with broad networks of people to design and build new **devices** and **knowledge** creation processes that can transform the world (ExCiteS group, 2017).

Citizen Science and Extreme Citizen Science

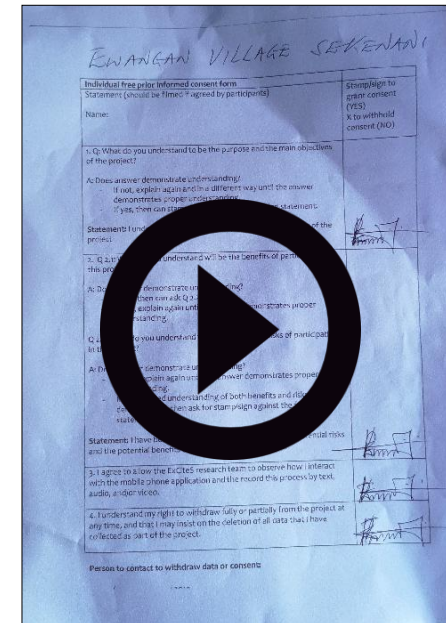




Free, Prior Informed Consent

A process that consists of **informing** the affected persons about planned **activities** and their **impacts** – both positive and negative – and **verifying** that the information provided has been **understood**, before explicit consent can be negotiated (Lewis, 2012).

- What is the purpose and main objectives of the monitoring and reporting project?
- What are the risks and benefits of the project?
- Who should have access to the data and what can they do with it?
- Can those who take part withdraw? If so, how can these measures be put in place?





User-Centered Design

User-Centred Design (UCD) approach, or Participatory approach, focuses on the **users**, their **experiences** and their **concerns** (Preece et al., 2002).

- The role of the **designer** is to:
 - Understand and capture user needs and goals
 - Design appropriate interfaces
 - Evaluate the usability of the product
- The role of the **user** is to:
 - Provide, in **every stage** of the development, insights that drive the design decisions being made
 - Evaluate the suggested solutions according to the degree they satisfy their needs and goals (Saffer, 2009)





Technology



Sapelli Collector



GeoKey Server



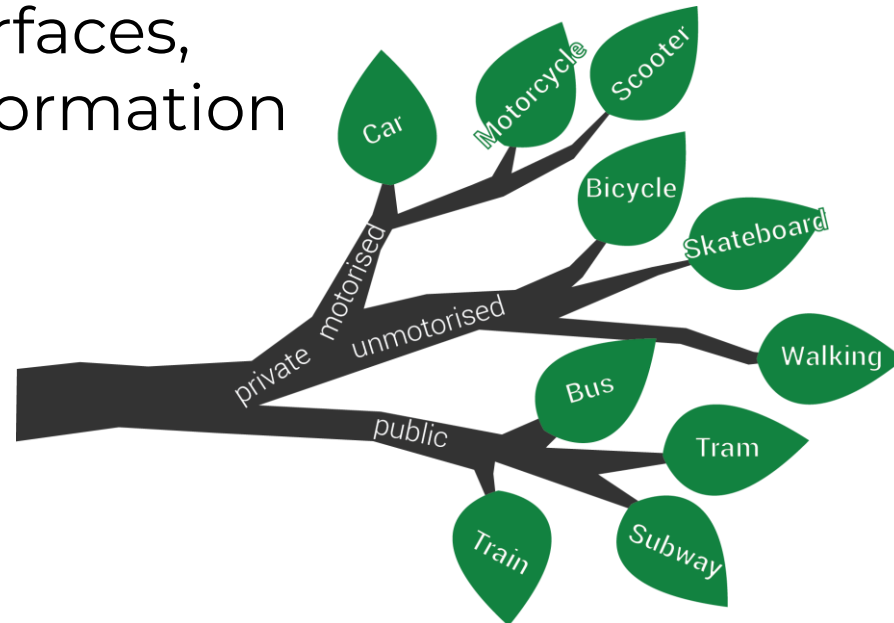
Community Maps
Visualisation





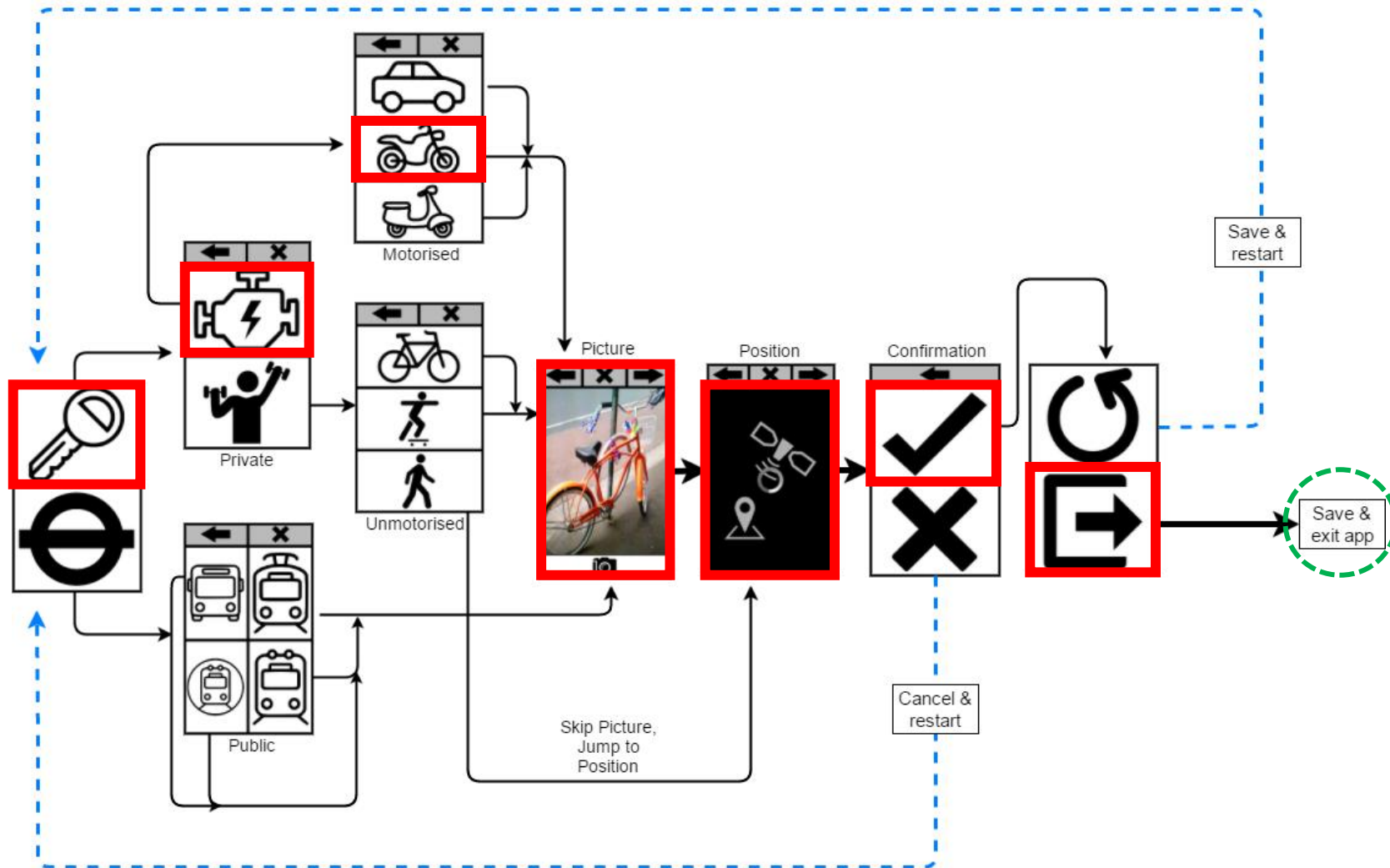
Sapelli

- Sapelli is a **mobile data collection and sharing platform** designed primarily (yet not exclusively) for non-literate or illiterate users with little or no prior ICT experience.
- Conceptually, Sapelli is like an empty and customisable **decision tree** that allows to easily design interfaces, the navigation flow, and how the information is transmitted and shared.





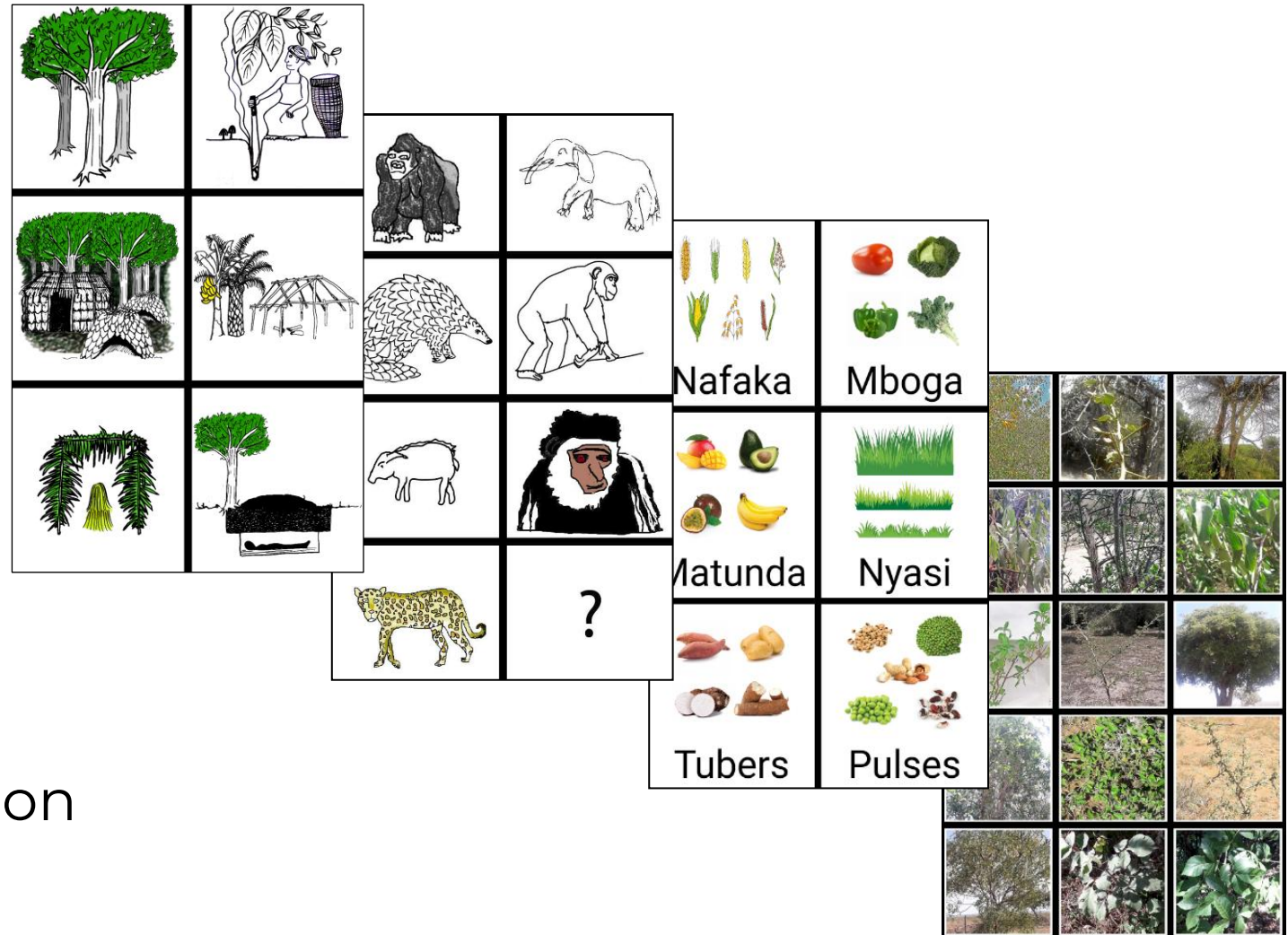
Sapelli





Sapelli

- Illegal logging
- Illegal poaching
- Farming
- Plant species distribution





GeoKey

Akonetye v0.1

Add receiver

URL:
<https://geokey.communitymaps.org.u>

User credentials:
 E-mail address:

Password:

Credentials optional if anonymous contributions allowed.

Pick a name (optional):

CANCEL OK



Plants_Maasai (v1.0)

Overview Categories **1** Subsets **0** User groups **2** Themes **0** Twitter **0** History Geographic extent Settings

[Click here for help](#)

Overview

Categories **1**

Masai_v1
5 fields

Create category

Subsets **0**

No subsets have been created yet.

Create subset

User groups **2**

Administrators
4 members

Sekenani EnviroTech Centre
1 member

Create user group

Statistics

166

CONTRIBUTIONS

0

COMMENTS

7

MEDIA FILES



Community Maps

The screenshot shows the 'mapping for change' web interface. The main map area displays an aerial view of a rural landscape with several plant sightings marked by numbered circles (2, 3, 6) and blue squares. A sidebar on the left provides details for a specific contribution:

Plants_Maasai (v1.0)
Added 7 days ago

Contribution
MarcosM added 7 days ago

Masai_v1

Data | Media | Comments

Device Id
1030481342

Start Time
3 Apr 2019 08:11

Plant
 Olakiroingai_OrangeLeafCroton

Name_of_the_new_plant
empty

Risk
 Pharmacy

Buttons: Delete, Edit contribution

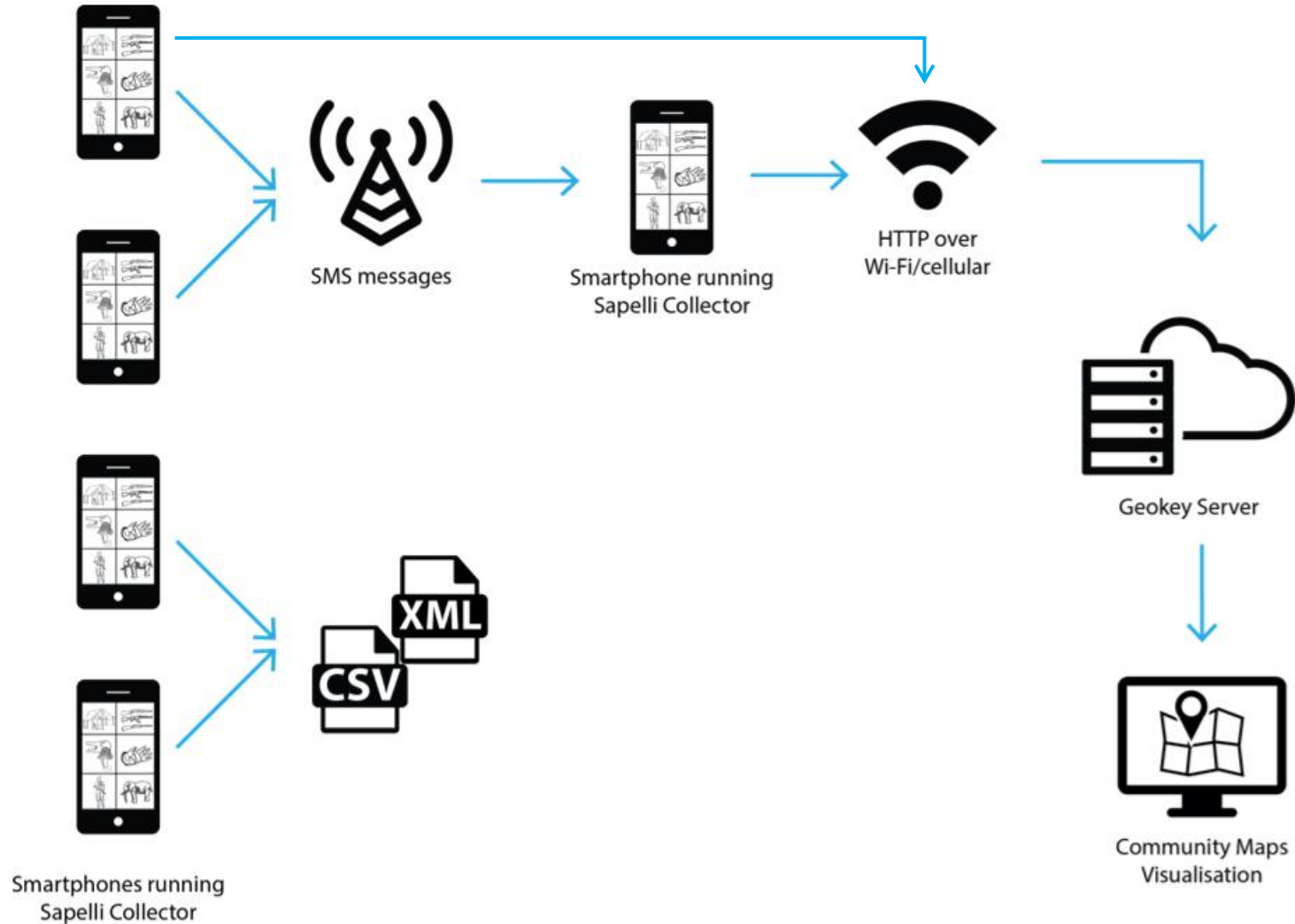
Map controls: Back, Home, Forward, Layers, Location, Search

Map navigation: Explore projects, MarcosM, UK Flag, Help

Map footer: © Mapbox © OSM © Mapping for Change | Terms and conditions

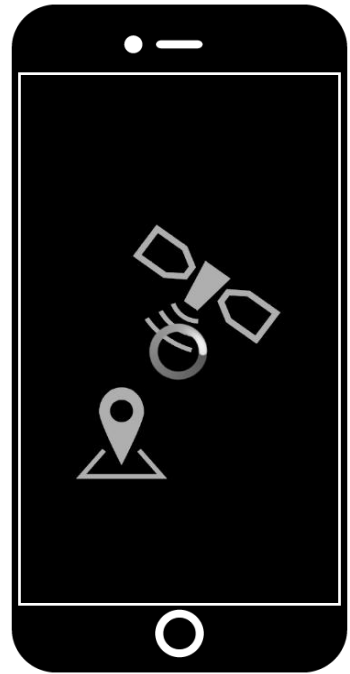


Data transmission

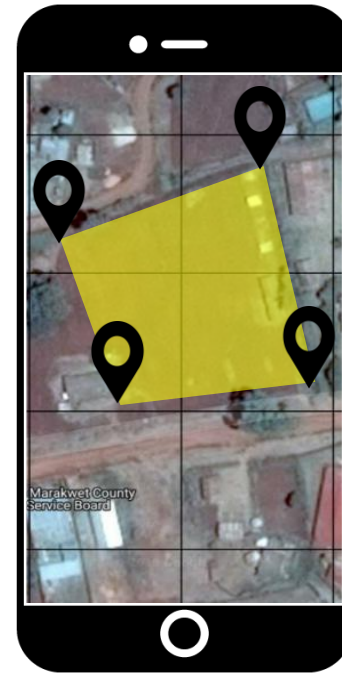




Evolving Sapelli



Point data collection



Point & area data collection
& visualization



References

Haklay, M., 2013. Citizen science and volunteered geographic information: Overview and typology of participation. In *Crowdsourcing geographic knowledge* (pp. 105-122). Springer, Dordrecht.

Lewis, J., 2012. How to implement free, prior informed consent (FPIC). *Biodiversity and culture: exploring community protocols, rights and consent*, p.175.

Preece, J., Rogers, Y., Sharp, H., 2002. *Beyond Interaction Design: Beyond Human-Computer Interaction*. 1st ed. N: John Wiley & Sons, Inc.

Saffer, D., 2010. *Designing for interaction: creating innovative applications and devices*. New Riders.





ExCiteS

Extreme
Citizen
Science



Thank you!

Questions?

marcos.moreu.18@ucl.ac.uk



European
Research
Council



This project has received funding from the European Research Council (ERC) under the European Union's Horizon 2020 research and innovation programme (grant agreement No 694767)