



**SSRP**  
SUSSEX SUSTAINABILITY RESEARCH PROGRAMME

# SYMPOSIUM

29<sup>th</sup> November 2023

Conference Centre, Bramber House





**SSRP**  
SUSSEX SUSTAINABILITY RESEARCH PROGRAMME

**Chi Eziefula**

*Co-created citizen science to advance  
sustainable menstrual health among  
adolescents*



**US**  
UNIVERSITY  
OF SUSSEX

 **institute of  
development  
studies**

# Co-created citizen science to advance sustainable menstrual health among adolescents

Chi Eziefula



@BSMSMedSchool  
#endperiodpoverty





LUNA  
CONNECTION



LUNA CONNECTION



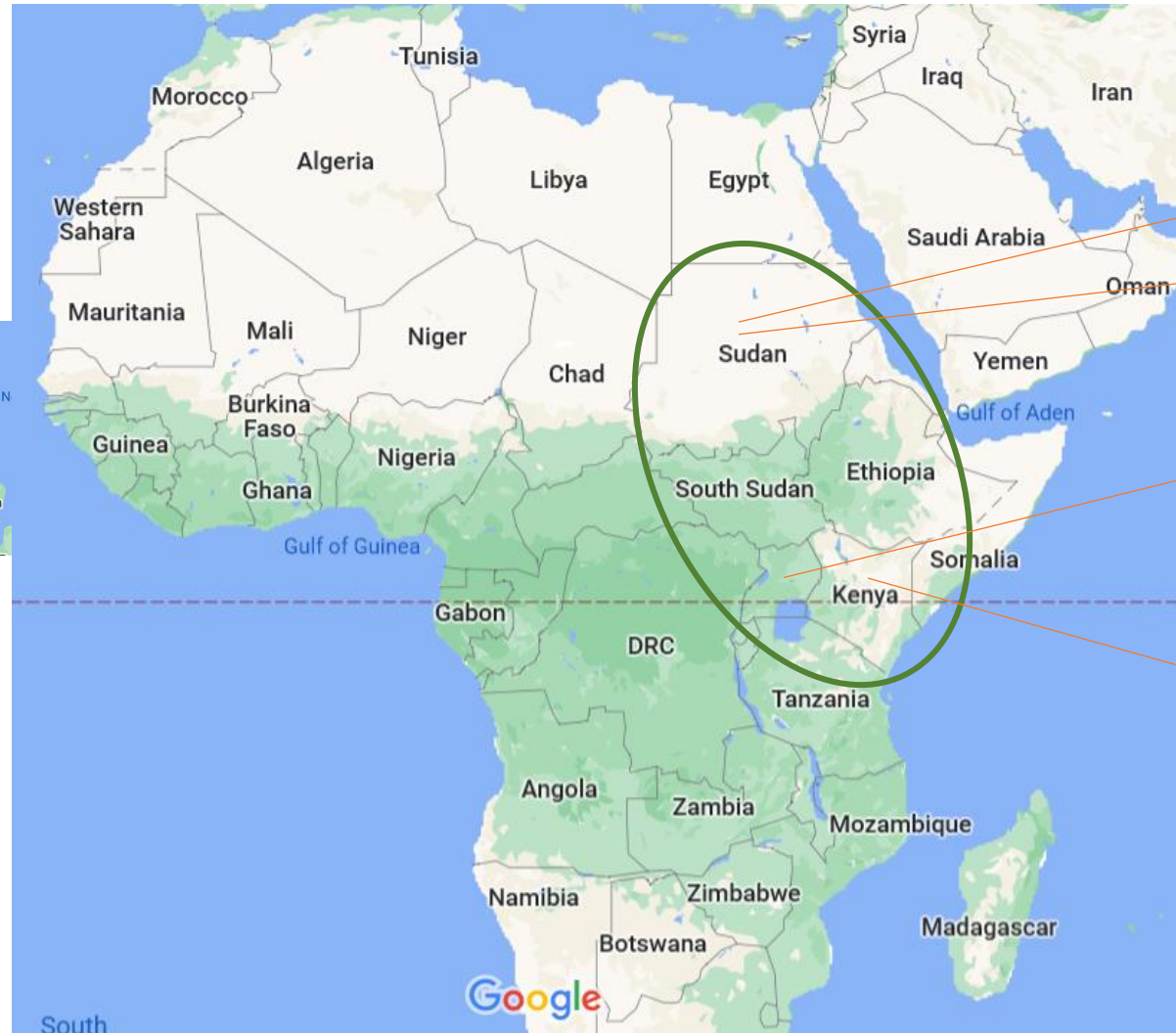
# Luna Connection

multidisciplinary international research network

Partner countries:  
Sudan, Uganda, Kenya, UK



Sussex Sustainability  
Research Programme  
(SSRP)



**MINISTRY OF HEALTH  
REPUBLIC OF UGANDA**





Dr Catherine Maiteki-  
Sebuguzi, Ministry of Health,  
Uganda



Professor Nafisa Bedri, Ahfad  
University for Women, Sudan



Dr Rose Bosire, Kenya Medical  
Research Institute (KEMRI)



Good Menstrual Health

Human Rights and Social  
Justice

Environmental  
Sustainability





Co-created citizen science to advance sustainable menstrual health among adolescents

# AIMS

- Explore the application of citizen science to:
  - Identify and highlight priorities for regional menstrual health and wellbeing
  - Improve awareness and understanding of the environmental impacts of menstrual products

Implementation:

UK

Sussex South Coast

Building Capacity:

SUDAN

UGANDA

# In-depth interviews

- Regional General Practitioners
- School teachers
- Transgender and non-binary experience
- Community group stakeholders
- Regional Child and Adolescent Psychologists



# Network building

- Bid design for citizen science
- Focus on Sussex schools
- 'Environmenstrual' collaborations



Single-use plastic



Wen raises awareness of hidden plastic and chemicals in conventional menstrual products and promotes reusable and organic options.



# Acknowledgments

- INTERNATIONAL
- **Catherine Maiteki**, Uganda Ministry of Health, Uganda
- **Sarah Staedke**, London School of Hygiene and Tropical Medicine
- **Nafisa Bedri**, Ahfad University for Women, Sudan
- **Rose Bosire**, Kenya Medical Research Institute (KEMRI)
- SUSSEX
- **Anne Gatuguta**, Brighton and Sussex Medical School
- **Maria Federica Moscati**, School of Law
- **Maya Unnithan**, School of Global Studies
- **Hayley MacGregor**, Institute of Development Studies
- **Caroline Ackley**, Brighton and Sussex Medical School
- **Kelly Shephard**, Integrity Global
- **Vivienne Benson**, Institute of Development Studies





**SSRP**  
SUSSEX SUSTAINABILITY RESEARCH PROGRAMME

**Jo Middleton**

*Supporting integration of conservation and  
public health in the upland forests of  
Bougainville and the lowlands forests of Sepu,  
Papua New Guinea*

**US**  
UNIVERSITY  
OF SUSSEX

 **institute of  
development  
studies**



**SSRP**  
SUSSEX SUSTAINABILITY RESEARCH PROGRAMME

**Jo Middleton**

*Creating visual and policy communication and impact to build on SSRP's successful conservation and health integration in Papua New Guinea, and our mapping of similar projects worldwide*

**US**  
UNIVERSITY  
OF SUSSEX

 **institute of  
development  
studies**





**SSRP**  
SUSSEX SUSTAINABILITY RESEARCH PROGRAMME

**Mika Peck**  
*Making the case for the 'Rights of Nature'  
in Minas Gerais, Brazil*

**US**  
UNIVERSITY  
OF SUSSEX

 **institute of  
development  
studies**

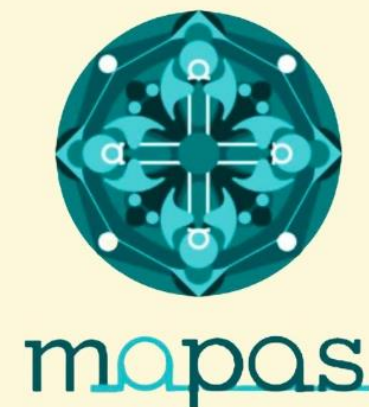
ENCONTRO DE TROCA DE SABERES

# Defendendo territórios em conflito com mineração em Minas Gerais

5 A 7 DE JUNHO

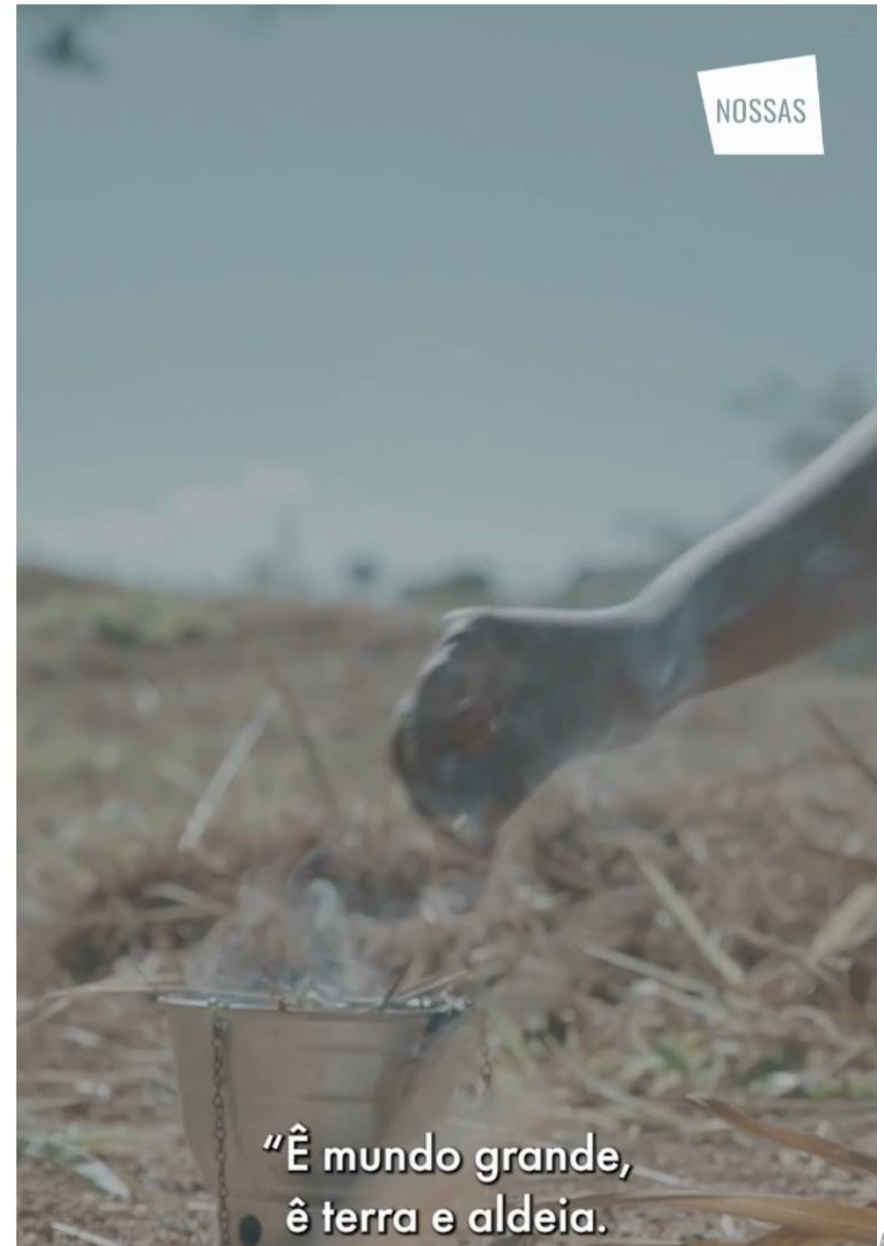
KILOMBO MANZO  
ENCONTRO PARA INSCRITOS

PREPARAÇÃO PARA O  
II FÓRUM BRASILEIRO  
DE DIREITOS DA  
NATUREZA





**"It's a big world, it's land and village."**



# 2.º FÓRUM BRASILEIRO DOS DIREITOS DA NATUREZA

6 e 7 de outubro

Ilhéus/BA

















**SSRP**  
SUSSEX SUSTAINABILITY RESEARCH PROGRAMME

**Bobby Cross**

*Empowering paraecologists to address  
Human-Wildlife Conflict (HWC) in NW Ecuador*

**US**  
UNIVERSITY  
OF SUSSEX

 **institute of  
development  
studies**

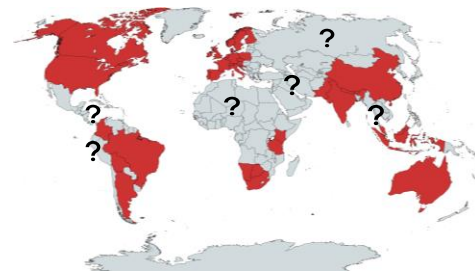


# Empowering Paraecologists to Address Human-Wildlife Conflict (HWC) in NW Ecuador



# PROJECT INFORMATION

- HWC common throughout the world, multi-faceted and involving many different species
- “The unequal burden of human-wildlife conflict”
- The importance of addressing HWC
- The role of paraecologists



Regional lack of data



Disproportionate focus/funding on species



LION  
GUARDIANS





# PROJECT INFORMATION

## Objectives

- Collaborate with local communities and paraecologists to design and develop educational resources promoting human-wildlife coexistence
- Enhance local paraecologist capacity to report and respond to human-wildlife conflicts

## Methodology

- 13 interviews conducted over 15 days
- Collaborative workshops with scientists, paraecologists, and impacted farmers to design effective outreach materials
- Focus on prevention techniques (predator-proof poultry coops, installing brass bells on cattle)



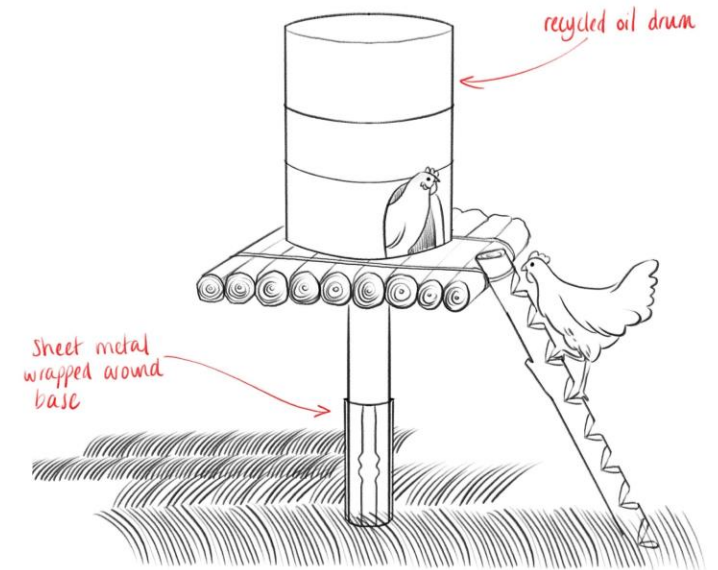
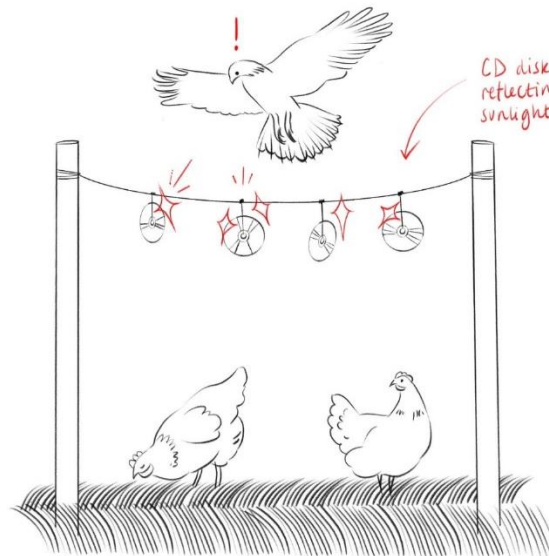
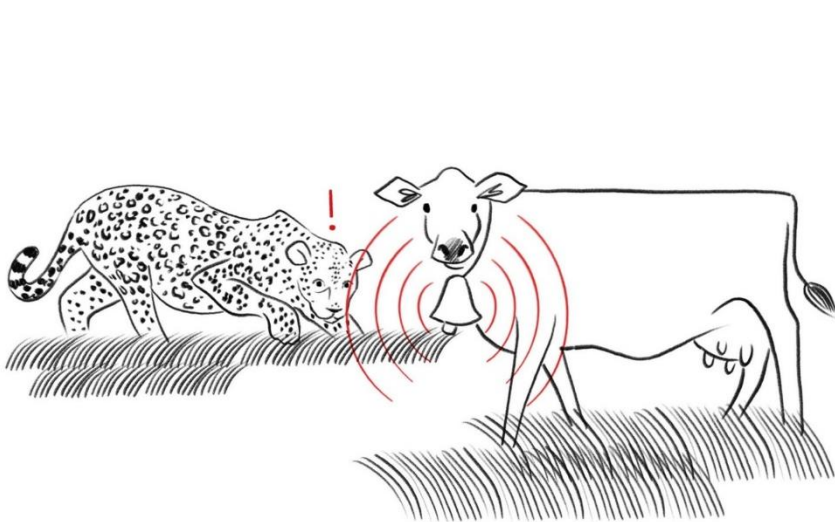
# OUTPUTS & NEXT STEPS

## Outputs

- Four illustrated infographics emphasizing preventative measures
- Culturally relevant content, simple language and visuals to overcome literacy barriers
- Peer-reviewed journal article
- Blog posts (SSRP and Sussex University)
- Exhibition showcasing SSRP funded artworks

## Next Steps

- Post-implementation assessment- edit and refine posters based on observed outcomes and feedback
- Initiate trials for testing various mitigation techniques- evaluate efficacy in addressing human-wildlife conflicts
- Extend distribution of posters to additional locations in Ecuador/South America
- Potential for project replication in other locations with existing relationships with Sussex (Zambia, Mozambique, and India)
- **Possibility of pursuing Ph.D. to deepen research insights?**







**SSRP**  
SUSSEX SUSTAINABILITY RESEARCH PROGRAMME

# Q&A

**US**  
UNIVERSITY  
OF SUSSEX

 **institute of  
development  
studies**



**SSRP**  
SUSSEX SUSTAINABILITY RESEARCH PROGRAMME

**Chris Sandom**

*South Coast Sustainability: Capacity building to create sustainable land use systems*



**US**  
UNIVERSITY  
OF SUSSEX

 **institute of  
development  
studies**



# South Coast Sustainability

Chris Sandom (Life Sci), Shova Thapa Karki (Business), Bonnie Holligan (LPS), John Thompson (IDS), Pedram Rowhani (Global), Sophie Robinson (Brighton & Hove Food Partnership), Richard Goring (Wiston Estate)  
Special thanks to Adam Skirkowski & Chloe Anthony (LPS)

## Transdisciplinary Research & Education

- Over 83 researchers identified with regional sustainability research interests
- Engaged 27 different researchers
- 4 regional University



## Please Join the Community

WhatsApp Group



E-mail:  
[c.sandom@sussex.ac.uk](mailto:c.sandom@sussex.ac.uk)



## Research Opportunities

1. Design effective transdisciplinary research systems;
2. Working with uncertainty and complexity;
3. Balancing efficiency and resilience
4. Drive positive culture change; and
5. Innovate and test solutions to tackling tradeoffs between food production, biodiversity conservation, climate change mitigation and adaption, and human health.



## Barriers to Trans-disciplinary Research

1. Disciplinary tensions;
2. Communication gaps;
3. Lack of long-term funding;
4. Over-committed researchers who lack adequate resources and support;
5. Institutional and capacity barriers to sharing and using data and knowledge effectively and efficiently; and
6. Welcoming and supporting new researchers and stakeholders.



# Research Funding Applications

Funding opportunity

**SSRP Round 8 funding**

**Land use for net zero – research  
(LUNZ-Research)**

**Sussex KE & Impact Fellowships**

Funding opportunity

**Resilient UK coastal communities and  
seas**

**MAH Impact Accelerator**

Funding opportunity

**UKRI cross research council responsive  
mode pilot scheme: round 1**

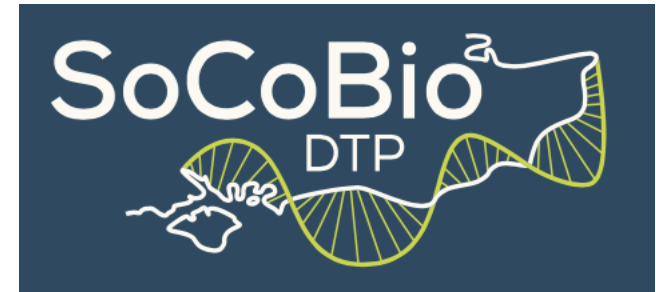
**Others?**

# PhD Funding Applications



**UK FOOD SYSTEMS**  
CENTRE FOR DOCTORAL TRAINING

**Others?**



**Requesting Funding for a Regional Network  
Manager for South Coast Sustainability – with  
SSRP**

**Creating a Sustainable Sussex: Wicked Problems  
at our University. A vision for a new UoS  
sustainability module - Perpetua Kirby, Pedram  
Rowhani, Chris Sandom, ...**

## Please Join the Community

WhatsApp Group



E-mail:  
[c.sandom@Sussex.ac.uk](mailto:c.sandom@Sussex.ac.uk)





**SSRP**  
SUSSEX SUSTAINABILITY RESEARCH PROGRAMME

**Rebecca Webb**

*Creating with uncertainty II: scaling education for net zero*

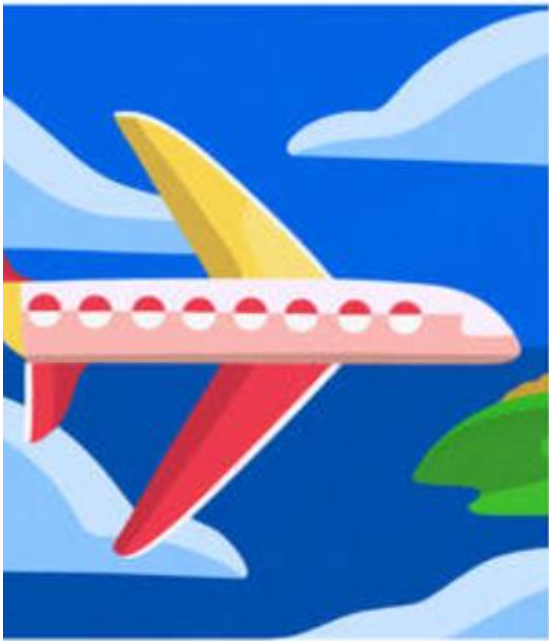


**US**  
UNIVERSITY  
OF SUSSEX

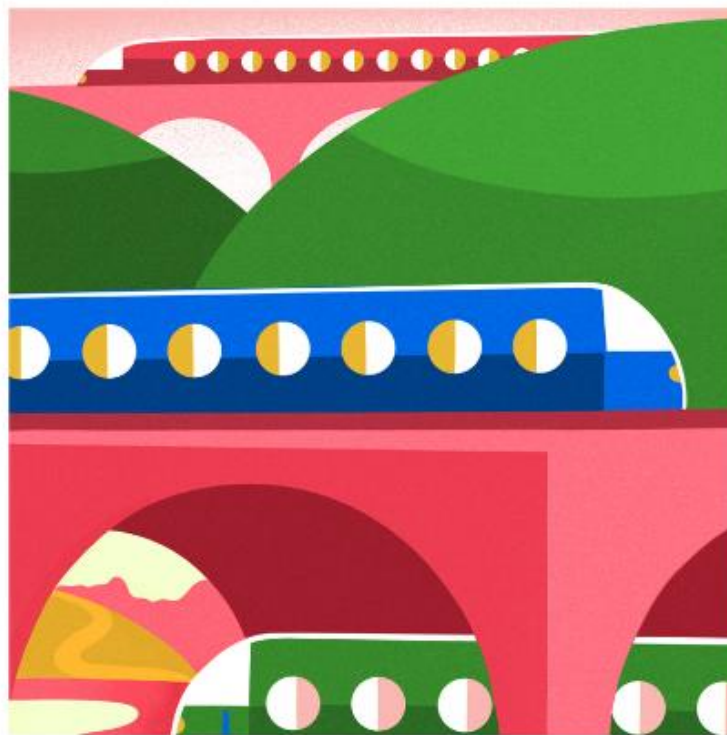
 **institute of  
development  
studies**

# The role of uncertainty in education

Educational purpose and pedagogy:  
'thinking with' metaphors for sustainability education



The plane



The train

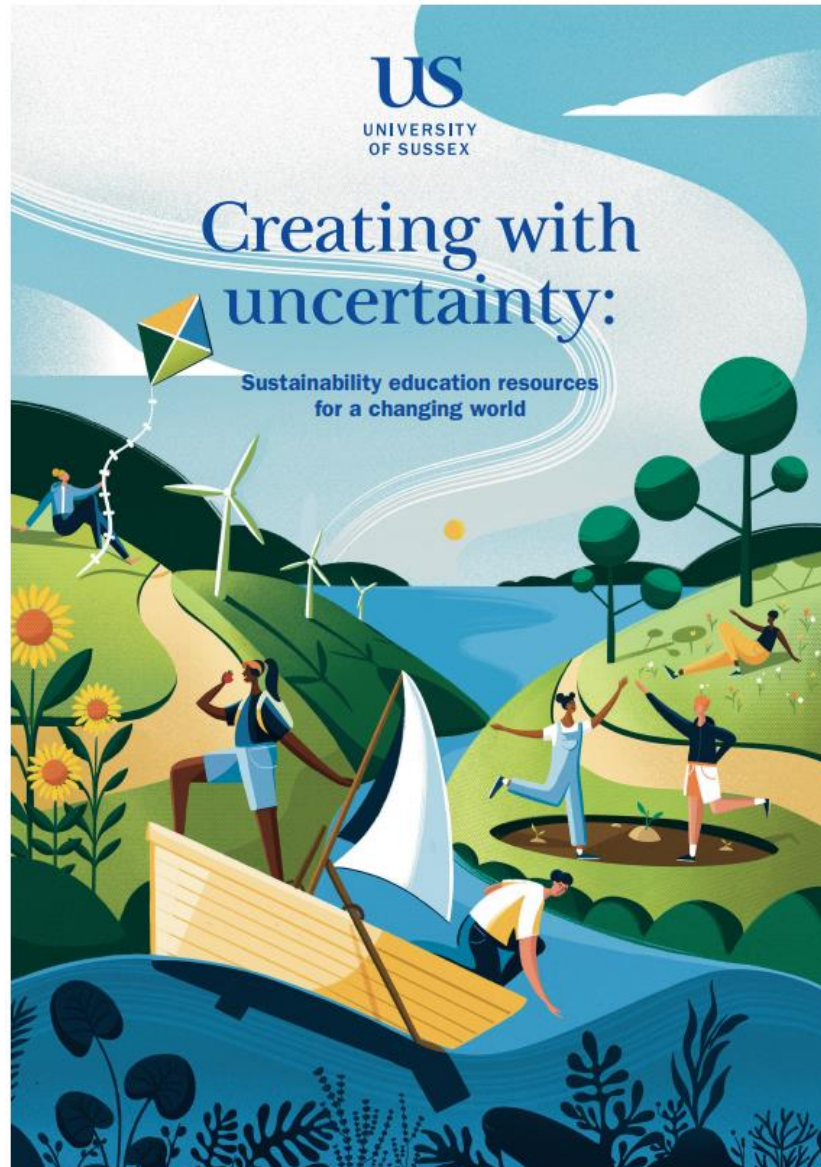


The sailing boat









<https://openpress.sussex.ac.uk/creatingwithuncertainty/>



**SSRP**  
SUSSEX SUSTAINABILITY RESEARCH PROGRAMME

**Ruth Stirton**  
*A right to Nutrition in Zambia*

**US**  
UNIVERSITY  
OF SUSSEX

 **institute of  
development  
studies**

## A 'right to nutrition' in Zambia: Linking rhetoric, law and practice

Lusaka, July 2023

Jody Harris (IDS Associate) and Ruth Stirton (LPS, Sussex)





# A 'Right to Nutrition' in its Social, Legal, and Political Context: How International Human Rights Translate to Zambian Realities (2022) JHRP 879

- <https://academic.oup.com/jhrp/article/14/3/879/6679122>
- Mixed methods study – document analysis, interviews and focus groups
- Aimed to explore the notion of a right to nutrition from the international organizational level (the UN) to the local level of citizens feeding their families.
- Major finding – the right to nutrition has rhetorical, legal and practical aspects, but these are siloed
  - ➔ Bring together the siloes in a workshop



# Lusaka July 2023 – Integrating Law and Nutrition in Zambia

- <https://www.ids.ac.uk/opinions/integrating-law-and-nutrition-in-zambia/>
- <https://www.sussex.ac.uk/broadcast/read/61521>
- <https://lawpoliticsandsociology.wordpress.com/2023/07/26/a-workshop-towards-integrating-law-and-nutrition-in-zambia/>
- Briefing note: <https://saipar.org/wp-content/uploads/2022/01/Right-to-Nutrition-Zambia.pdf>



# Next steps

- Great enthusiasm from the stakeholders who attended
- Developed a big list of potential actions
  - Constitutional change
  - Education to catalyze policy change
  - Lobbying and publicity to raise the profile of the issues
  - Leaning on the Mwanza case to develop the law
- Main focus for now – developing strategic litigation to encourage legal strengthening of the right to nutrition in Zambia







**SSRP**  
SUSSEX SUSTAINABILITY RESEARCH PROGRAMME

**Fiona Mathews**

*Subsistence poaching in Wildlife Protected Areas: the scope and limitations of transactional controls in Zambia*



**US**  
UNIVERSITY  
OF SUSSEX

 **institute of  
development  
studies**

# Subsistence poaching in Wildlife Protected Areas: scope and limitations of transactional controls in Zambia



*Fiona Mathews (Life Sciences),  
Elizabeth Harrison (Global Studies),  
Tony Carr (Life Sciences)*





# Aims:

- Ethnographic assessment of interventions designed to offer alternative livelihoods
- Develop field-methods for assessing poaching of key species
- Build capacity for long-term research





# Ethnographic study

- Overall +ve KTL and alternative livelihoods
- Complexities of community management –
  - Community Resource Board devolved to village leaders
  - Community Forest Management Group (grassroots, little funding)
- Importance of local politics
  - Disputed chiefdom
  - High staff turnover
  - Local government
  - Previous experiences of individual vs community benefits





## Next steps

- Develop species-specific assays for key poaching targets
- Next round of honey sampling to understand potential ecosystem services of bees in forest
- Work with KT on poaching monitoring strategy
- Potential future ethnographic studies as interventions mature/expand

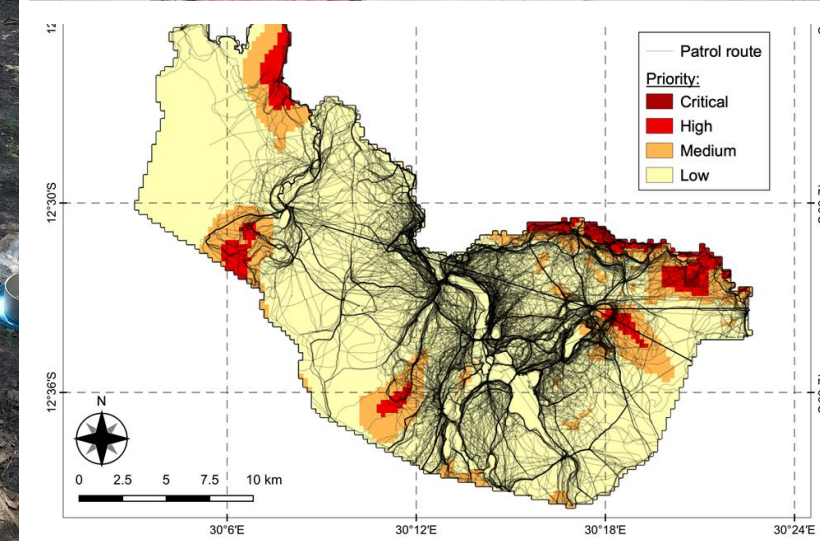
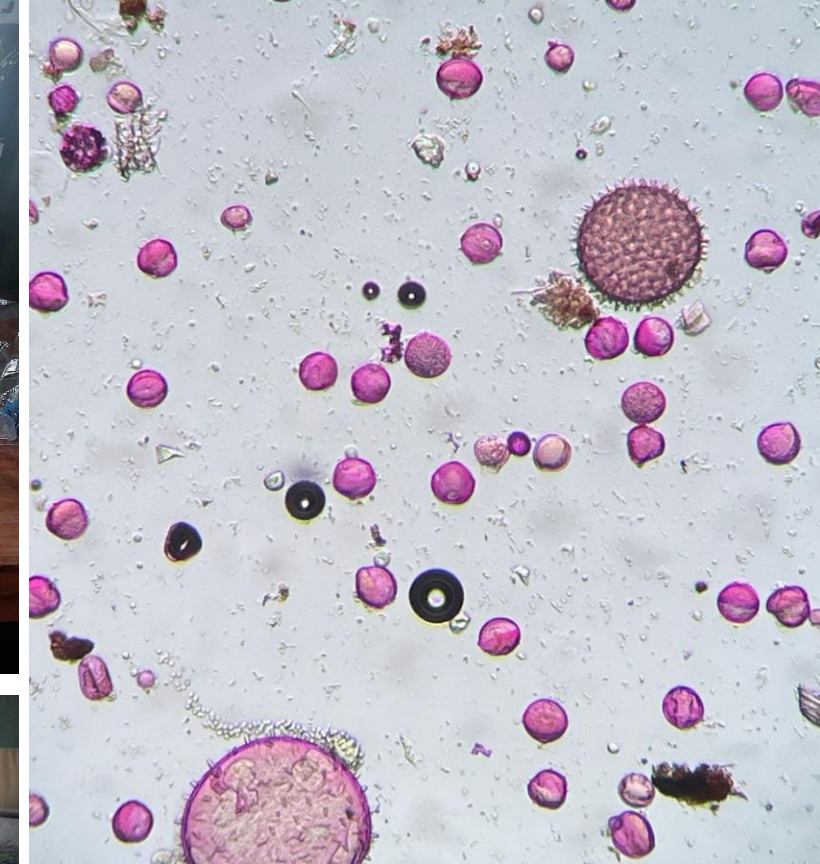


Figure 9: Comparison of optimal vs. actual patrol route planning; classification of priority as per figure 8;



**SSRP**  
SUSSEX SUSTAINABILITY RESEARCH PROGRAMME

# Q&A



**US**  
UNIVERSITY  
OF SUSSEX

 **institute of  
development  
studies**





**SSRP**  
SUSSEX SUSTAINABILITY RESEARCH PROGRAMME

**BREAK**



**US**  
UNIVERSITY  
OF SUSSEX

 **institute of  
development  
studies**



**SSRP**  
SUSSEX SUSTAINABILITY RESEARCH PROGRAMME

**Emanuela Orlando**

*Eco-Anxiety and Climate Related distress: Legal & Policy Perspectives*



**US**  
UNIVERSITY  
OF SUSSEX

 **institute of  
development  
studies**



SSRP Visiting Research Fellowship – September 2023

*Eco-anxiety and the Law:*  
legal and policy perspectives  
on eco-anxiety

**Dr Emanuela Orlando (LPS & SSRP, Sussex)**  
Visiting Fellow: Prof Siti Hafsyah Idris (Universiti  
Teknologi Mara, Malaysia)



# Eco-anxiety & the Law

- **Eco-anxiety or climate-anxiety:**

“chronic fear of environmental doom”  
[definition of eco-anxiety, APA & EcoAmerica, *Mental Health and Our Changing Climate*, 2017]

- Acknowledging the mental health impacts of climate change
- Relatively recent but on the rise

➤ How does law fits into this picture? What is/can be the role of law and policy in addressing eco-anxiety?

**Filling a gap:** Examining eco-anxiety from a legal and policy perspective and exploring the implications and the responses in law and policy.



# Key findings



- Law & emotions: emotions linked to climate change may have legal relevance as they impact on people's response and behaviour in relation to the environment and to sustainability
- Intra- and inter-generational equity and justice implications for future generations

## Eco-anxiety as a human rights issue

- Children rights & climate change: UNCHRC General Comment no 26
- Agostinho Duarte and others versus Portugal, ECtHR (pending)

## Eco-anxiety in climate litigation

- Held v State of Montana (August 2023), Montana District Court

# Outputs and Next Steps

- SSRP visiting fellow **research seminar** in September on Malaysian perspectives on eco-anxiety
  - SSRP Blog ‘Addressing eco-anxiety through law and policy: first reflections in the light of recent climate litigation cases’.
  - From reactive responses to proactive and holistic approaches:
    - **how to best integrate climate anxiety through policy and law**
    - **Need to rethink legal approaches and conceptualisation of the relationship of human with the natural world and to redefine concepts of responsibility**
- ... *watch this space* 😊





**SSRP**  
SUSSEX SUSTAINABILITY RESEARCH PROGRAMME

**Mirela Barbu**

*Conflict and fragile ecosystems: biodiversity loss and  
livelihood crisis in Northwest Syria*

**US**  
UNIVERSITY  
OF SUSSEX

 **institute of  
development  
studies**





# **Conflict and Fragile Ecosystems: building capacity to address biodiversity loss in Northwest Syria**

**Prof Fiona Marshall and Dr Mirela Barbu – University of Sussex Business School**

<https://www.sussex.ac.uk/business-school/research/centres-projects>

<https://agricultural-voices.sussex.ac.uk/>





**SSRP**  
SUSSEX SUSTAINABILITY RESEARCH PROGRAMME

**Maria Clara Castellanos**  
*Wildfires Ecology*

**US**  
UNIVERSITY  
OF SUSSEX

 **institute of  
development  
studies**





# Wildfires and livelihoods: a new collaboration in Tropical Dry Forests

Maria Clara Castellanos  
Ecology & Evolution  
School of Life Sciences

SSRP Visiting Fellow  
Prof Angela Parrado-Rosselli



**UNIVERSIDAD DISTRITAL  
FRANCISCO JOSÉ DE CALDAS**



Royal  
Botanic  
Gardens **Kew**



## WILDFIRES: ecological and human dimensions

A short transdisciplinary symposium

July 10<sup>th</sup>, 2023, 11:00 to 12:30

Hybrid: join us in person in John Maynard Smith Building, room JMS 4D13  
or online in Zoom using [this link](#)

### Speakers:

#### "Fire and biodiversity"

Professor [Juli G. Pausas](#), CSIC (Spain)

#### "Fire in a hyperdiverse tropical country"

Professor [Angela Parrado Rosselli](#), Universidad Distrital Francisco José de Caldas (Colombia) and SSRP Visiting Fellow

#### "Fire governance: Whose narrative counts?"

Professor [Kate Schreckenberg](#), King's College London and Leverhulme Centre for Wildfires, Environment and Society

#### "A global agent-based model of human-fire interactions"

[Oliver Perkins](#), PhD Student, King's College London and Leverhulme Centre for Wildfires, Environment and Society



LEVERHULME  
Centre for **Wildfires,**  
**Environment and Society**



## Fire-smart restoration for resilient socio-ecological Tropical Dry Forest landscapes

### Aiming to

Develop innovative restoration approach that reduces fire frequency and associated poverty, food insecurity, and biodiversity loss

### “Fire-smart landscapes” that combine

- Testing of post-fire restoration focused on the transition between farm and forest
  - integrating current practices (stakeholder analysis)
  - new knowledge on plant adaptations to fire (germination, resprouting)
- Institutional capability
  - Fire management as an integral part of TDF
- Education and outreach
  - Fire and invasive species awareness






**SSRP**  
SUSSEX SUSTAINABILITY RESEARCH PROGRAMME

**Valentina Scarponi**

*Documenting the recovery of the Sussex inshore ecosystem  
post trawling byelaw using environmental DNA (eDNA)*

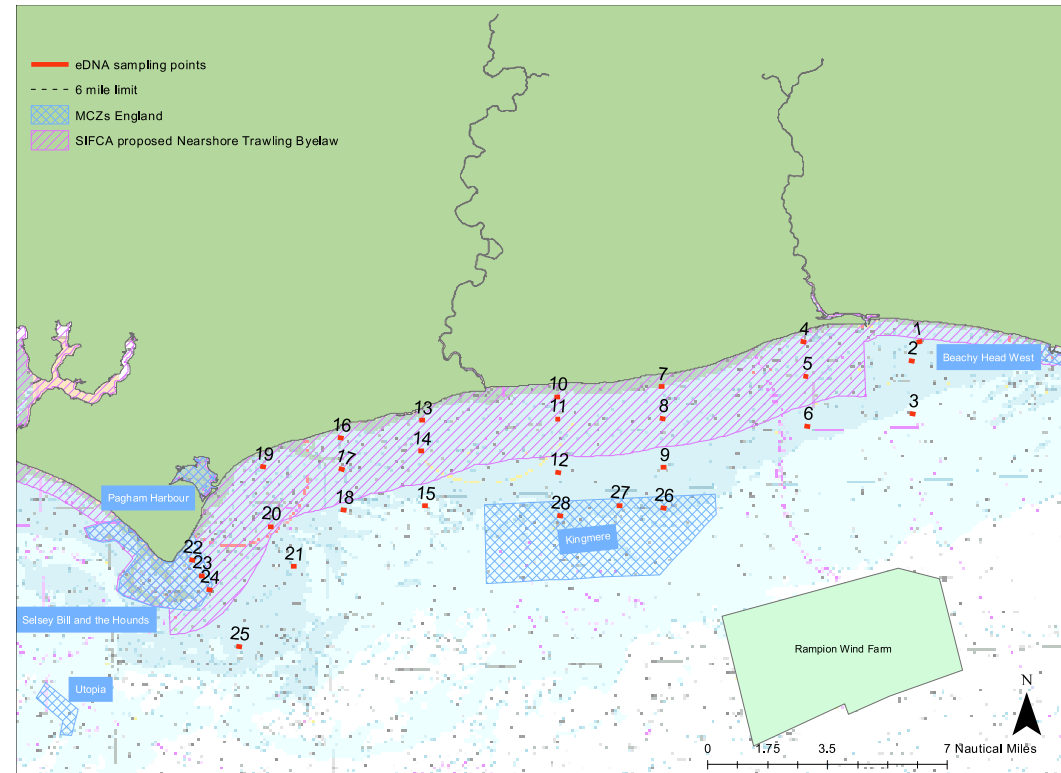


**US**  
UNIVERSITY  
OF SUSSEX

 **institute of  
development  
studies**



# eDNA to monitor Sussex inshore ecosystem recovery post trawling ban



UoS ARK group: Valentina Scarponi, Mika Peck, Alice Clark, Marianne Glascott, Tim Cane  
Partners and collaborators: NatureMetrics, Sussex Wildlife Trust, Blue Marine Foundation



**SSRP**  
SUSSEX SUSTAINABILITY RESEARCH PROGRAMME

# Q&A



**US**  
UNIVERSITY  
OF SUSSEX

 **institute of  
development  
studies**





**SSRP**  
SUSSEX SUSTAINABILITY RESEARCH PROGRAMME

**Fiona Mathews**

*Equitable and Sustainable Forest Restoration in the  
Ecuadorian Andes*



**US**  
UNIVERSITY  
OF SUSSEX

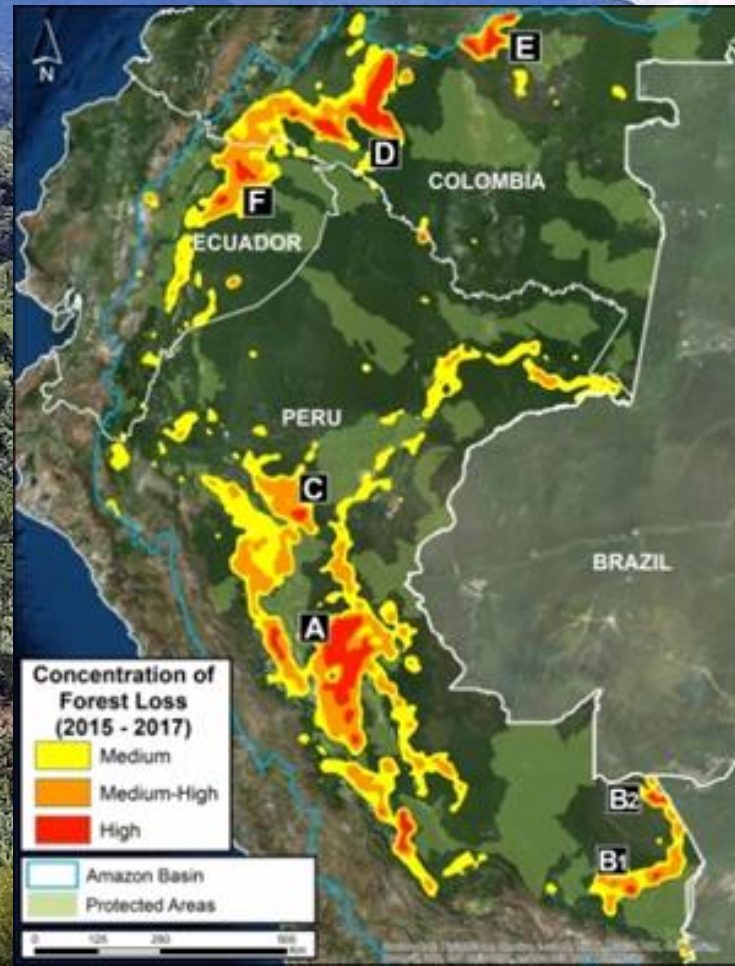
 **institute of  
development  
studies**



# Equitable and Sustainable Forest Restoration in the Ecuadorian Andes

Fiona Mathews, Evan Killick, Jo Smallwood, Maria-Clara Castellanos, Alexander Antonarakis

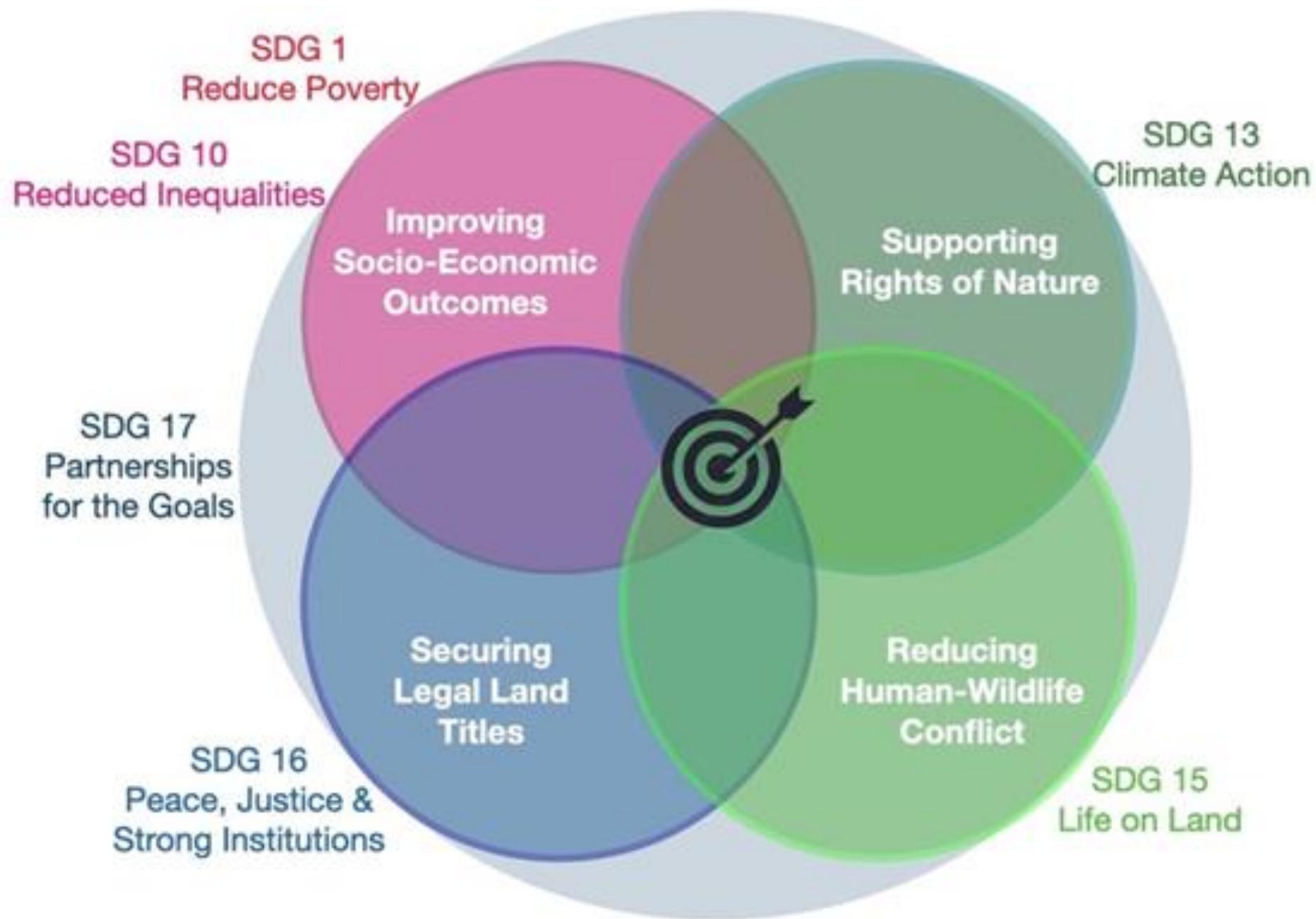
(Bears, monkeys, forests, and land titles)















**SSRP**  
SUSSEX SUSTAINABILITY RESEARCH PROGRAMME

**Bonnie Holligan**

*Revisioning territorial rights in the face of resource extraction:  
an action research network supporting communities affected  
by mining in Minas Gerais, Brazil*

**US**  
UNIVERSITY  
OF SUSSEX

 **institute of  
development  
studies**

# Revisioning territorial rights in the face of resource extraction: an action research network supporting communities affected by mining in Minas Gerais, Brazil

**Purpose:** To continue nurturing the environmental and human rights defenders' knowledge-exchange network formed as a result of SSRP #7, connecting them with a broader range of experiences from Latin America and elsewhere to inform local resistance strategies while generating insights for international comparative research on land rights, mining and transition.

SSRP #8

Bonnie Holligan, Alex Shankland, Anabel Marín

SSRP Conference - November 29th 2023



**Serro**



**Mário Campos**



**Vale das Cancelas**



**Serra do Curral**



**Serra do Gandarela**





# Calendar of activities

Event	Topic	Invited researchers
Meeting 0 (November)	Sharing the proposal and getting feedback from the group	Bruna Viana and Fabiana Leme
Meeting 1 (January)	Comparative analysis of legal frameworks for collective land tenure	Bonnie Holligan (Sussex LPS)
Meeting 2 (January)	Strategies for engaging with mining companies in Latin America	Anabel Marín (Sussex IDS)
Meeting 3 (January)	Power analysis for vertical and horizontal integration of resistance strategies	Alex Shankland (Sussex IDS)
Workshop 1 (February - Serro)	Protocols of Consultation	(tbc) Uli Ide (HEKS)
Meeting 4 (March)	Protecting human rights defenders	(tbc) Jairo Santos (MG State Legislative Assembly)
Meeting 5 (April)	Fundraising strategies for territories in resistance	(tbc) Lúcia Nader (Sussex IDS PhD student)
Workshop 2 (May)	Social and biodiversity mapping to protect territories	Mauro Toledo (Unimontes/IDS); (tbc) Ceylan Hassan (Sussex alumni)



# Outputs

- Report of key inputs and reflections of each online meeting and of the in-person Workshop
- Proposal of article about "Land law, traditional territories and mining expansion in Minas Gerais, Brazil" was approved to be presented at the Land Deal Politics Initiative (LDPI) Global Land Grabbing International Conference, between 19-21 March 2024, in Bogota, Colombia
- Networks such as the Traditional Peoples' Colloquium (coordinated by NIISA-UNIMONTES), the MATOPIBA Observatory, the Modern Studies in Property Law research network, the Brazil-Africa Traditional Territories Network and the Argentina Mining and Environmental Conflicts Network will be contacted for the dissemination of the project findings.

# Plans and next steps

Developing a larger collaborative research proposal on **traditional territories at the intersection between existing threats** from mining and agribusiness, and **emerging threats from “green transition” dynamics** such as the extraction of critical minerals and the enclosure of land for solar and wind energy production.



**SSRP**  
SUSSEX SUSTAINABILITY RESEARCH PROGRAMME

**Lucila Newell**

*Ripple Effect: A Waterway Resilience Initiative*



**US**  
UNIVERSITY  
OF SUSSEX

 **institute of  
development  
studies**



# Ripple effect: A Waterway Resilience Initiative

**University of Sussex Team:** Lucila Newell, Ellie Rotheray, Mika Peck

**Partners:** Rachel Millward, Sarah Butler, Ffion Thomas, Christina Coleman  
(Friends of River Medway and Wealden District Council)





# Plan

## Citizen-science project to

- 1) Assess the water pollution and biodiversity status of the Upper River Medway,
- 2) identify the sources of water pollution on the river and
- 3) engage the relevant policy-makers to develop pathways for sustainable change, which will 'ripple' out beyond this case.

## **Research on how connection and care of the environment can be a pathway to sustainability.**

- Participant observation and semi-structured interviews

**SDGs 3 (Good health and well-being), 6 (Clean water and sanitation), 13 (climate action)14 (Life below water), 15 (Life on land), 16 (Peace, Justice and Strong Institutions)**



A lush green forest scene with a stream flowing through it, framed by dense foliage. The stream is narrow and reflects the surrounding greenery. The foliage is dense and vibrant, with various shades of green. The overall atmosphere is serene and natural.

# Outputs and next steps

- Social, cultural and economic
- Political
- Academic





**SSRP**  
SUSSEX SUSTAINABILITY RESEARCH PROGRAMME

**Shova Thapa Karki**

*Place-based sustainability: Understanding place-based knowledge and knowledge boundaries for sustainability transitions*

**US**  
UNIVERSITY  
OF SUSSEX

 **institute of  
development  
studies**



A modern, multi-story building with a curved facade, featuring large windows and a mix of brick and light-colored panels. The building is set against a clear blue sky with some light clouds. In the foreground, there is a green lawn and a paved path.

# **Place-based sustainability: Understanding place-based knowledge and knowledge boundaries for sustainability transitions**

**US**  
UNIVERSITY  
OF SUSSEX

BUSINESS  
SCHOOL

EFMD  
**EQUIS**  
ACCREDITED

ASSOCIATION  
**AMBA**  
ACCREDITED

Shova Thapa Karki  
Bradley D Parrish  
University of Sussex Business School

# Our Approach

## ○ **Place-based sustainability**

- Place-based initiatives – actions by local actors - have growing roles in efforts to promote sustainability.
- The interplay between the power of policy and the power of sustainable practices
  - ✓ Policy and interventions impacts local practices and landscapes.
  - ✓ Sustainable practices shaped by adaptation to local contexts.
- Regional transformation shaped through a combination of external and local level actions and practices, particularly knowledge.

## ○ **Builds on previous work**

- Scaling place-based sustainability initiatives for biodiversity conservation
- Collaborative networks to create place-based knowledge and knowledge networks to address place-specific challenges and solutions.
- Sharing benefits, responsibilities, learning and reorganisation for transformative change



# Our Project

## Research Problem

Transforming food production and consumption practices into sustainable food system requires integrated knowledge for generating innovative and scalable place-based solutions.

## Theoretical Framework

- 3 types of knowledge boundaries:
- Information-Processing (Syntactic)
  - Interpretive (Semantic)
  - Pragmatic (Political)

## Research Question

In what ways, expert knowledge can be transformed into integrated place-based knowledge for sustainability transitions?

## Research Collaborations

### Internal

Prof. Nick Nisbett, IDS  
Dr Bonnie Holligan, School of Law

### External

Brighton and Hove City Council, UK  
Brighton and Hove Food Partnership, UK  
Gadjah Mada University, Java, Indonesia  
Bakudapan Food Study Group, Java, Indonesia



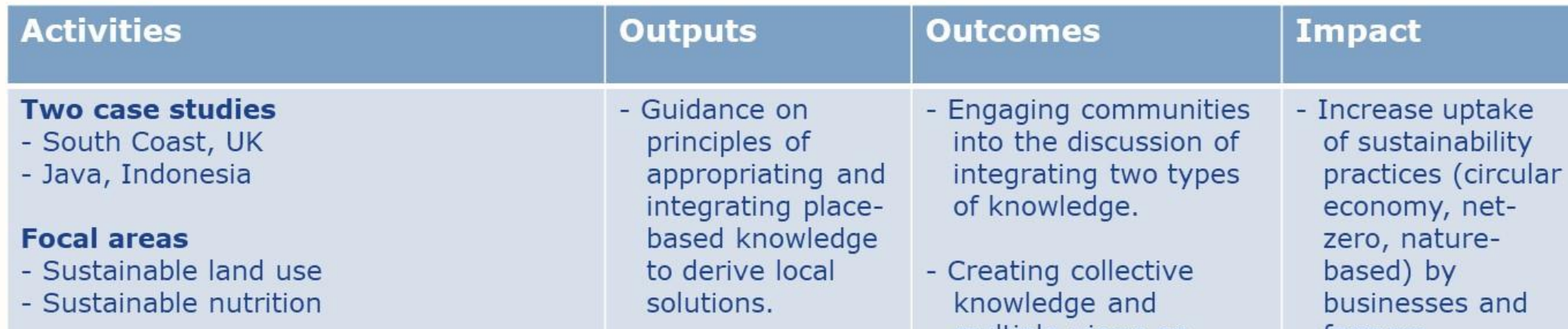
# Theory of Change

## STATEMENT

Disconnect between macro-level and local-level initiatives and practices, impeding innovative and scalable place-based solutions.

## MISSION

Collaboratively produced place-based knowledge for sustainability transitions



Activities	Outputs	Outcomes	Impact
<b>Two case studies</b> <ul style="list-style-type: none"><li>- South Coast, UK</li><li>- Java, Indonesia</li></ul> <b>Focal areas</b> <ul style="list-style-type: none"><li>- Sustainable land use</li><li>- Sustainable nutrition</li></ul> <b>Focus group discussion</b> <ul style="list-style-type: none"><li>- 8 (4x2) focus groups in case study sites</li><li>- Diversity of actors and organisations in food production and consumption</li></ul> <b>Outreach and engagement</b> <ul style="list-style-type: none"><li>- Organise two impact-related events in each case study country to disseminate project findings</li></ul>	<ul style="list-style-type: none"><li>- Guidance on principles of appropriating and integrating place-based knowledge to derive local solutions.</li><li>- Journal articles, policy-briefs, blogs, website</li></ul>	<ul style="list-style-type: none"><li>- Engaging communities into the discussion of integrating two types of knowledge.</li><li>- Creating collective knowledge and multiple views on place-based knowledge.</li><li>- Engagement with wider actors and organisations.</li></ul>	<ul style="list-style-type: none"><li>- Increase uptake of sustainability practices (circular economy, net-zero, nature-based) by businesses and farmers.</li></ul>





**SSRP**  
SUSSEX SUSTAINABILITY RESEARCH PROGRAMME

# Q&A

**US**  
UNIVERSITY  
OF SUSSEX

 **institute of  
development  
studies**



**SSRP**  
SUSSEX SUSTAINABILITY RESEARCH PROGRAMME

**LUNCH**

**US**  
UNIVERSITY  
OF SUSSEX

 **institute of  
development  
studies**





**SSRP**  
SUSSEX SUSTAINABILITY RESEARCH PROGRAMME

**THANK YOU**