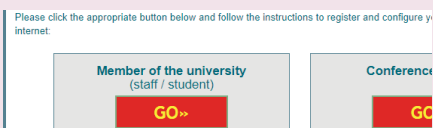


Using the wired connection in your room

You can connect your laptop or desktop computer to the internet using the cable in your room.

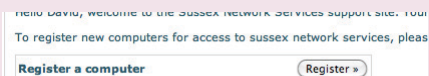
- Make sure you know your IT **username** and **password** (confirmed when you registered).
- Check that the wi-fi on your computer is **turned off** and that the date and time are set correctly, then connect your computer to the network socket on the wall using the pink cable

- 1 Open a web browser (such as Internet Explorer) and you should see a Sussex web page. Click the **GO** button for students (or go to <https://www.sussex.ac.uk/roaming> if you don't see this page).



- 2 Login with your username and password (and accept the terms and conditions for the University network the first time you login)

- 3 Click on the button to **Register a computer**



- 4 Complete the details for your device and click **register**

| | |
|------------------|---|
| computer name | toshiba laptop |
| equipment type | Laptop |
| operating system | Win7 |
| comment | |
| | <input type="button" value="register"/> <input type="button" value="cancel"/> |

- 5 Click **Register** again to log your computer's unique address



This should be filled in automatically - choose **Wired** and click **register**

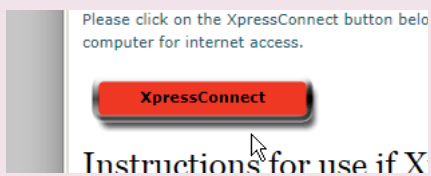
| | |
|-------------|---|
| IAC address | 001222cc2b3b |
| connection | Wired |
| | <input type="button" value="register"/> <input type="button" value="cancel"/> |

- 6 Once your computer's address has been registered, you next have to put in the right settings so your computer can connect. This is done automatically using a special program called **XpressConnect**.

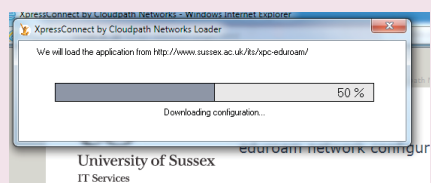
- 7 Click on the **Setup** link at the top of the page



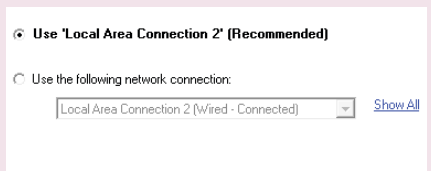
- 8 Click the red button to install and run XpressConnect



- 9 XpressConnect will take you through the setup process. Follow the instructions on the screen to allow XpressConnect to install and run.



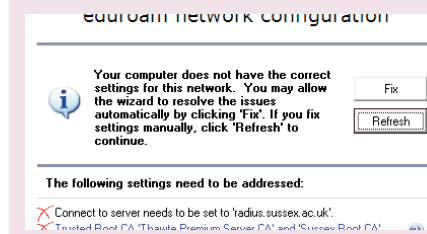
- 10 Click on **Continue** to confirm that the current wired connection should be used



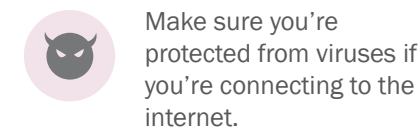
- 11 You will need to login with your IT username and password when requested. Notice that @sussex.ac.uk is added to the end of your username

| | |
|-----------|--|
| name: | ano23@sussex.ac.uk |
| password: | XXXXXXXXXX <input type="button" value="View"/> |

- 12 There might be one or two settings that need to be changed - click **Fix** to update them automatically



When the process has finished, you should see the Sussex home page. You can also try connecting to an external site such as www.google.com to make sure you're on the web.



Make sure you're protected from viruses if you're connecting to the internet.



You should only have to follow this process the first time you use the cable. After that, your device should connect whenever you plug in.



Don't worry if you have problems connecting - come along to **IT Services in Shawcross** with your laptop and power supply and we'll help you get online.