



Sustainability Assembly

Wed 19 February

1- 5.30 pm

Jubilee Lecture Theatre



[#SustainableSussex](#)

[#GoGreener](#)

Sustainability Assembly

Session 3: Sustainability Research, Education & Engagement

Chair: Ananya Tiwari

Research: Joseph Alcamo

Living Lab: Chris Sandom

Community Engagement: Monique Forbes-
Broomes & Becca Finney

Mental health: Kotryna Vaičiulionytė



Sustainability Assembly

Session 3: Sustainability Research, Education & Engagement



Research

Joseph Alcamo

Director,

Sussex Sustainability Research Programme





Sussex Sustainability Research Programme

Joseph Alcamo

Sussex Sustainability Assembly
February 19, 2020



SSRP
SUSSEX SUSTAINABILITY RESEARCH PROGRAMME

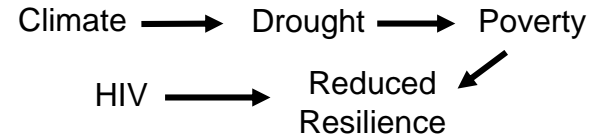


Sussex Sustainability Research Programme

Sustainability research
Science for the SDGs



Local sustainability research around the world



Climate-Drought-Poverty-HIV
**KwaZulu-Natal
South Africa**



Forest Conservation & Public Health Care
**Wanang Forest
Papua New Guinea**



Environmental Justice
Violence against Environmental Activists
Ecuadorian Amazon

ARTICLES

<https://doi.org/10.1038/s41893-019-0349-4>

nature
sustainability

Corrected: Publisher Correction

The supply chain of violence

Nathalie Butt^{1,2*}, Frances Lambrick³, Mary Menton⁴ and Anna Renwick³

Scaling up: Integrative approach to SDGs

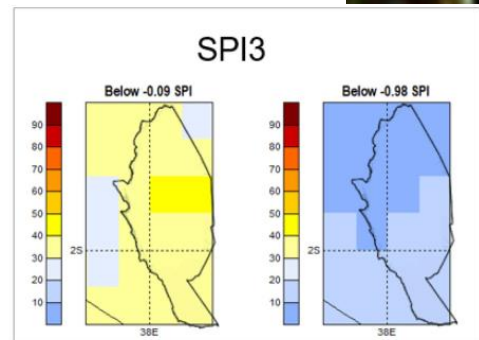


Sustainable supply chain management



Joint public health – conservation programmes

Improved early warning to link climate risk and food security



Scaling up: Impact from local to global



Co-Chairs SDG Committee
of Parliament



Sustainability at home ...



Sussex ... The Sustainability University

- ✓ Research
- ✓ Teaching
- ✓ Advocacy
- ✓ The Campus Example



SSRP
SUSSEX SUSTAINABILITY
RESEARCH PROGRAMME

US
UNIVERSITY
OF SUSSEX

IDS Institute of
Development Studies



Sussex Sustainability Research Programme

Joseph Alcamo

Sussex Sustainability Assembly
February 19, 2020



SSRP
SUSSEX SUSTAINABILITY RESEARCH PROGRAMME



Sustainability Assembly

Session 3: Sustainability Research, Education & Engagement



Living Lab

Chris Sandom

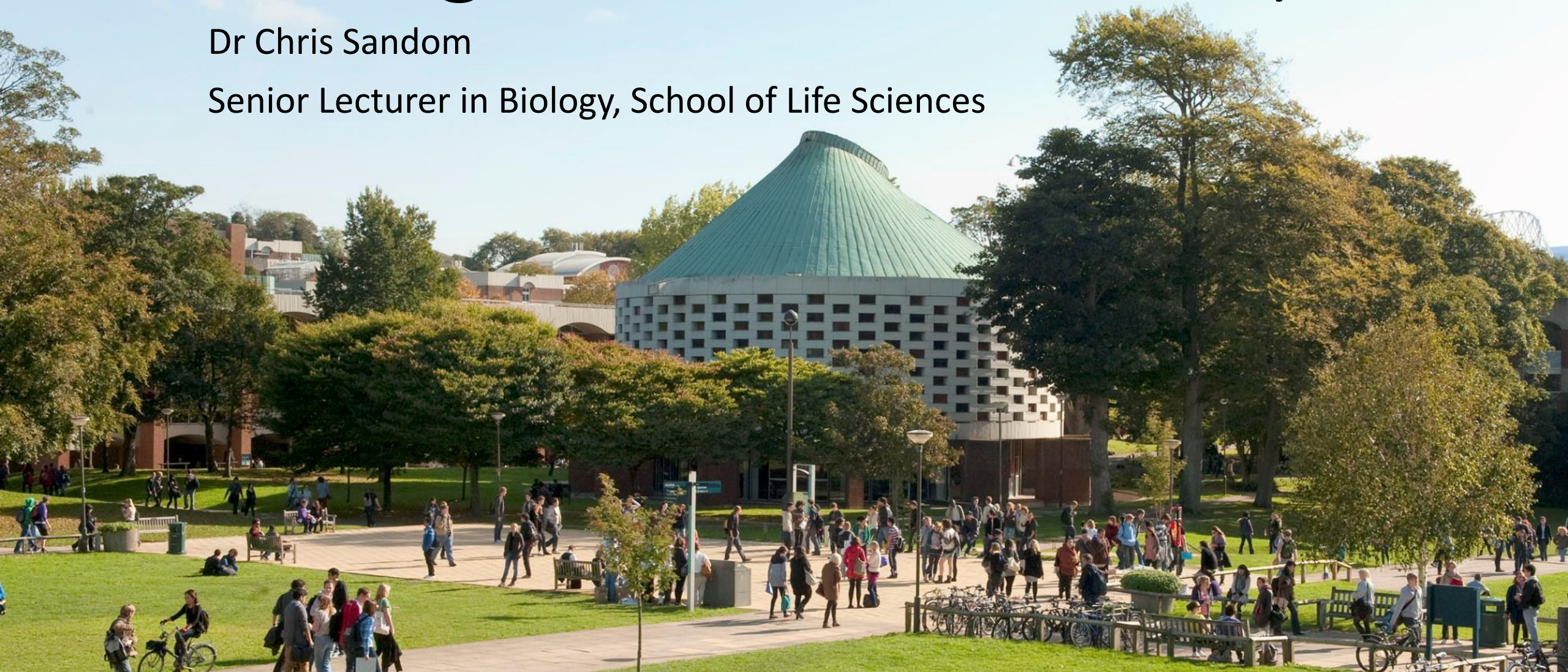
Senior Lecturer, Life Sciences




The University of Sussex as a Living Lab for sustainability

Dr Chris Sandom

Senior Lecturer in Biology, School of Life Sciences





Search

Get involved

All news

Green Impact excellence



Energy

See how we're using renewable energy to power parts of our campus



Recycling

See how we've signed up to the only paper cup recycling scheme in the UK



Travel

Explore how we aim to improve sustainable forms of travel to campus

Go Greener

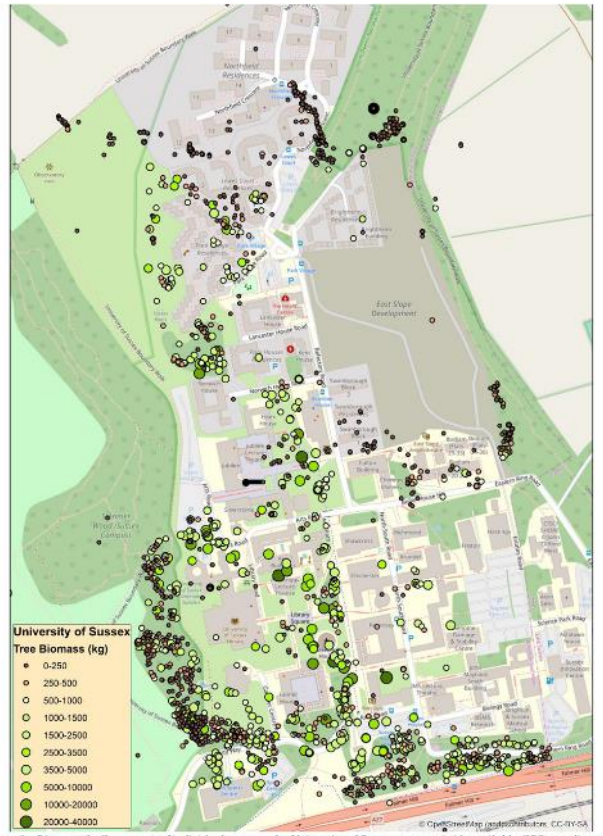


Figure 8 - Biomass (kgC per tree) of individual trees on the University of Sussex campus (with available GPS coordinates) with darker green and larger circles indicating greater estimated biomass



A Forest Food Garden for Sussex



Very good, but room for improvement

51 University of Sussex

Rank: 51 Total score: 45.3%

Show Full Score Card

Close



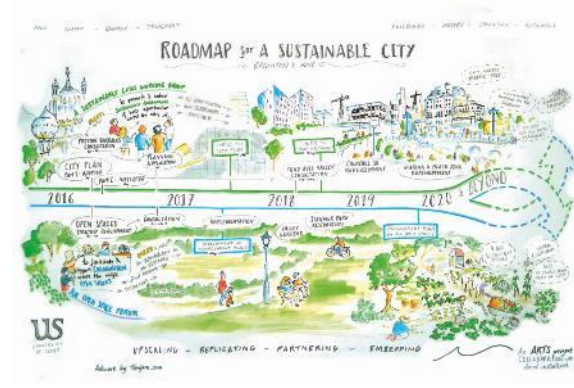
- A very good effort.
- Lots of positive things happening and clear demonstration of an increasing commitment to sustainability.
- Could improve by:
 - Developing and communicating a clearer vision of a sustainable University,
 - Identifying and sharing processes to realize the vision, and
 - Empowering and enabling all staff and students to make the changes.

A BETTER
UNIVERSITY
FOR A BETTER
WORLD

REIMAGINE
+
TRANSFORM

A Living Lab for sustainability

- Co-create of a sustainable vision
- Explore to find us the pathway
- Experiment to identify what works
- Evaluate and Iterate



VISION

- Co-Creation Workshops
- Co-create and communicate the vision of a Sustainable University
- Inspirational
- Highly visual
- Clear and measurable goals

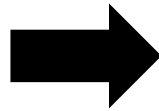
EXPLORATION

- Innovation Workshops
- Layout the pathway to deliver the vision
- Inclusive
- Action orientated
- Layout the challenges

EXPERIMENT

- Research and Research Projects
- Implement and test the actions
- Trans-disciplinary
- Make data and results easily available

RESEARCH WITH IMPACT



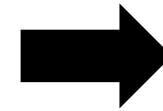
Rewilding Young People

A report by Wild Brighton



How can 15-25 year olds in Brighton become more engaged with nature and its restoration?

Rebecca O' Sullivan, Isobel Taylor, Kassandra Giragosian & Ian Orchardson



Sussex
Wildlife Trust

“The report's recommendations will support our efforts to tackle nature disconnection, and we are in discussion with its authors about ways we can remove barriers to living a wilder future.”

Mike Murphy, Education Development Manager



Rewilding Sussex University Campus

Mollie Mills, Grace Dovey, Lucie Derrick and Becky Davess



LEARN TO TRANSFORM



Identifying, Maintaining and Promoting Ecosystem Services on the University of Sussex Campus

2019

Organisation: Campus Ecological Solutions Ltd

Authors: Alys Davies, Hannah Jenks, Martha Knott, and Gizem Koc

All photos created by the authors





A Forest Food Garden for Sussex

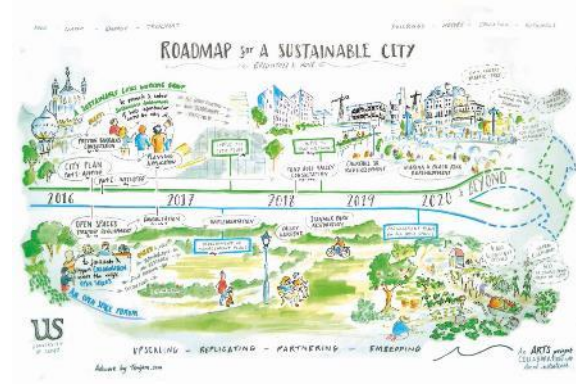


A crossword puzzle grid on a wooden background. The words are formed by pink-bordered tiles, each containing a letter and a subscript number. The words are:

- ANTHRACOLITE (horizontal, top row)
- ENGLISH (horizontal, middle row)
- CELSIUS (vertical, left column)
- CELSIUS (vertical, right column)

The grid layout is as follows:

			P ₃						E ₁			
			A ₁	N ₁	T ₁	H ₄	R ₁	O ₁	P ₃	O ₁	G ₂	Y ₄
			Y ₄						N ₂			
			S ₂						O ₁			
			E ₁	N ₁	G ₂	L ₂	I ₁	S ₁	H ₂	M ₁		
			C ₃						I ₂			
			S ₁						C ₁			
									S ₁			



VISION

- Co-Creation Workshops
- Co-create and communicate the vision of a Sustainable University
- Inspirational
- Highly visual
- Clear and measurable goals

EXPLORATION

- Innovation Workshops
- Layout the pathway to deliver the vision
- Inclusive
- Action orientated
- Layout the challenges

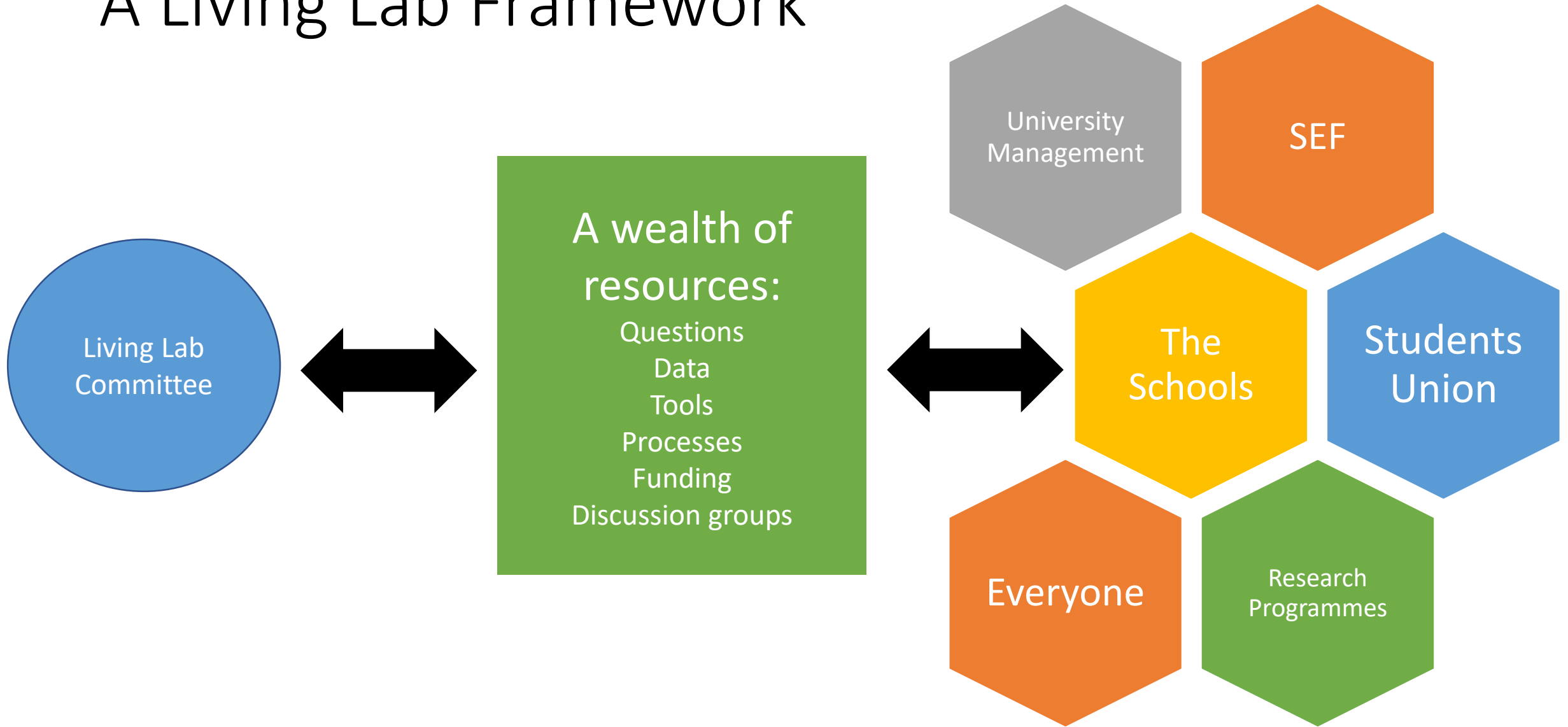
EXPERIMENT

- Research and Research Projects
- Implement and test the actions
- Trans-disciplinary
- Make data and results easily available

EVALUATION

- Annual Sustainability Conference
- Share results
- Monitor progress
- Adapt the pathway

A Living Lab Framework



The University of Sussex as a Living Lab for sustainability

A BETTER
UNIVERSITY

FOR A BETTER
WORLD



Sustainability Assembly

Session 3: Sustainability Research, Education & Engagement



Community Engagement

Monique Forbes-Broomes & Becca Finney

University of Sussex Students' Union



COMMUNITY ENGAGEMENT

Sussex Sustainability Assembly 2020



THE GREEN CENTRE
thegreencentre.co.uk



BRIGHTON PEACE & ENVIRONMENT CENTRE

bpec.org

@BreatheBrighton



O N
C A

ONCA

<https://onca.org.uk/support/volunteer/>



Relax. Create. Learn. Share.

WOODLAND FLO DAY

Go with the Flo of Nature

Sat 14 March 2020 10-3

Future Roots @StanmerOrganics

FUTURE ROOTS



FUTURE ROOTS

earthfutureroots.org

Sustainability Assembly

Session 3: Sustainability Research, Education & Engagement



Mental health

Kotryna Vaičiulionytė, BA International
Relations and Development, Global Studies



Sustainability Assembly

Session 3: Sustainability Research, Education & Engagement

Chair: Ananya Tiwari

Research: Joseph Alcamo

Living Lab: Chris Sandom

Community Engagement: Monique Forbes-
Broomes & Becca Finney

Mental health: Kotryna Vaičiulionytė





Sustainability Assembly

Wed 19 February

1- 5.30 pm

Jubilee Lecture Theatre



[#SustainableSussex](#)

[#GoGreener](#)