



CIRCY Summer Newsletter 2022

WELCOME TO CIRCY'S SUMMER ACTIVITIES

Dear CIRCY members and friends

We do hope you have had some time for rest and relaxation over the spring break.

In this newsletter we'll let you know what some of our members got up to over the past few months, and set out the programme of events for CIRCY's summer term 2022.

We have included some brief information at the end of this newsletter about what being a member of CIRCY involves and we'd like to encourage you to share this newsletter with new members of staff, doctoral researchers, and any other colleagues or students who might be interested in CIRCY and our activities.

CIRCY 10 YEAR ANNIVERSARY CONSULTATION

As CIRCY approaches its 10 year anniversary, we are consulting with our members about our aims, processes, and future directions.

This includes gathering feedback about our current and future goals, activities, research themes, networking, and interdisciplinary approach. We hope to identify both strengths and areas in which we could improve.

We would appreciate your thoughts as part of this review and would be grateful if you could take 5-10 minutes to [complete our survey](#).



NEW CIRCY CO-DIRECTOR

We are delighted to welcome [Liam Berriman](#) as CIRCY's new Co-Director! Liam leads the [Childhood and Youth Studies MA course](#), and is connected to the [Sussex Humanities Lab](#). He is particularly interested in children and young people's digital lives (everyday digital practices, data and data ethics, gaming and toys, and practices of digital care and self-care).

Liam is a sociologist by training and is presently the co-convenor of the [British Sociological Association's Childhood Study Group](#). Liam replaces the wonderful [Rebecca Webb](#), who has provided invaluable support to CIRCY over the past three years. We are very grateful that she will continue to support us as a member of our Steering Group.

SUMMER TERM EVENTS

Most activities and events are either online or 'hybrid' this term. We will share additional details - including Zoom/Eventbrite links and or venue information - via email. Email Brontë McDonald [bm333@sussex.ac.uk] to be added to our mailing list.

- **CIRCY COFFEE & COLLABORATION**

June 2022 (details to follow)

These termly events are an opportunity for CIRCY colleagues to do a short informal presentation on a research-related issue of interest to our membership. Please get in touch if you're interested in presenting at a future meeting.

- **CIRCY OPEN SEMINAR**

Tuesday 10 May 2022 / 4.15-5.30pm
/ Room G15, Fulton Building or Zoom
[Register at <https://tinyurl.com/2p8fbvkj>]

"I reckon you should go to a normal school, Miss"

Researching the lived experience of school exclusion with teenage boys

presented by Dr Roma Thomas
Principal Lecturer, School of Social Sciences,
University of Bedfordshire



- **CIRCY DOCTORAL RESEARCHER NETWORK**

Thursday 28 April / 3-4pm / via Zoom

We continue our series of methodology and ethical considerations with children with this presentation by PhD researcher, Devyn Glass (Psychology), who will discuss her research on digital storytelling with young people.

All welcome!

The network meets approximately twice a term to share knowledge and support, with discussion facilitated by the CIRCY team. If you are a PhD researcher at Sussex who isn't yet a member of this network and think your work might fall within [CIRCY's research areas](#), please let us know by emailing Brontë McDonald to be added to our mailing list [bm333@sussex.ac.uk].

SPOTLIGHT ON RESEARCH & KNOWLEDGE EXCHANGE 2022

Every summer, CIRCY publishes [an Annual Report](#) which features a number of 'Spotlights on Research and Knowledge Exchange'. These features offer in-depth discussions of methodologies, challenges, innovations and new ideas for our research and knowledge exchange activities.

We are now inviting 'Spotlight' submissions for our Summer 2022 Annual Report (welcomed from doctoral researchers as well as faculty) on any issue relevant to researching children, childhood and youth. Similarly to last year, we particularly welcome narratives offering insights into the impact of the Covid-19 pandemic on children and young people, and/or creative responses to the methodological constraints wrought by the pandemic.

Each Spotlight feature should be between 500-800 words and written in the first person in language comprehensible to non-academics and those from different disciplines. Related images are particularly welcome.

If you would like your work featured in this year's Report, please send an expression of interest to Brontë McDonald [bm333@sussex.ac.uk] by 16 May. We will confirm within a few days if we would like you to proceed, after which you would need to provide the full text by 13 June. The CIRCY steering group will then review the submissions prior to final decisions.

Your expression of interest must include:

- Your name, department and role
- The type of work being written about (ie. research project, publication, knowledge exchange/impact building)
- A title for the proposed piece
- The focus of the piece (or the whole piece if already written/completed)
- Any related images if possible/available.

Please also provide full references of studies, funders, collaborators, and/or linked publications at the end, including any relevant web links. 'It would also be helpful if you are able to link your work to one or more of the themes which structure the report:

- Emotional lives
- Everyday lives and (extra)ordinary childhoods
- Improving services for children, young people and families
- Imaginative methodologies
- Voice and participation.

NEW RESEARCH AWARDS & PROJECTS

Kristi Hickle (Social Work and Social Care) won a tender to evaluate the Children's Society's Disrupting Exploitation Phase II programme. The evaluation will utilise a Contribution Analysis methodology to consider the programme's impact on the lives of young people affected by criminal exploitation in Manchester, Birmingham, and London. The three year project is funded by the National Lottery Community Fund at £170,000. **Lisa Holmes** (Education) will lead the Cost Effectiveness analysis, **Michelle Lefevre** (Social Work and Social Care) will lead the engagement with Learning Partners, and **Carlie Goldsmith** (Social Work and Social Care) will conduct the qualitative fieldwork. NatCen is an external partner, providing quantitative data analysis of system pattern and outcome data, and service costs.

Last May, **Jenny Hewitt** (Social Work and Social Care) and two colleagues from Anthropology, along with **Sarah Jane Phelan** (Global Studies) applied for and won £25,000 from the UKRI's Higher Education Innovation Fund to carry out a pilot research study into teachers' experiences during the Covid-19 pandemic. Their research, 'Care In The Classroom', involved providing teaching staff in five primary schools with dictaphones to create audio recordings and subsequently interviewing them. Following data analysis, they developed 'toolkits' with [Pursuit Wellbeing](#) who specialise in helping teachers and school leaders with mental health and wellbeing. The toolkits will be trialed in Sussex primary schools. The team are also applying for funding to fund policy development to explore an integrated approach with East Sussex County Council. They will also be recording podcasts exploring teachers' experiences, following publication of the research findings.

Jenny is interested in talking to any CIRCY members interested in getting involved with the podcasts or any other aspect of this research. Please email Brontë McDonald in the first instance: bm333@sussex.ac.uk.

Rebecca Webb and **Perpetua Kirby** (both Education) have been working with local teachers to undertake the small-scale qualitative research project, 'Exploring spaces for engaging with uncertainty in a knowledge-based sustainability curriculum in a school in the UK' as part of a global research project led by Ian Scoones (Institute for Development Studies) as part of PASTRES (Pastoralism, Uncertainty and Resilience: Global Lessons from the Margins). The wider project aims to learn from the ways that pastoralists respond to uncertainty to apply those lessons elsewhere in the world.

PUBLIC ENGAGEMENT & KNOWLEDGE EXCHANGE

Michelle Lefevre (Social Work and Social Care) presented '*Facilitating relationship-based practice with children and families in challenging contexts*' on 8 March as part of a webinar for BASW England's (the professional association for social work and social workers) 80-20 Conference on 'Inclusive Relationship-based Practice in a Changing World' during World Social Work Month (March).

European Conference for Social Work Research Amsterdam / 6-8 April 2022

- **Michelle Lefevre's** Innovate Project had a strong presence at the Conference.



- **Kristi Hickle** (Social Work and Social Care), with project partners Jenny Lloyd and Delphine Peace from Durham University, presented '*Contextual Safeguarding and Relationships: How intervening in contexts facilitates relational working with adolescents experiencing harm*'
- **Kristi Hickle** and project partner Carlene Firmin from the University of Durham held their inaugural Special Interest Group on Social Work with Adolescents



- **Nathalie Huegler, Gillian Ruch, and Jeri Damman** (all Social Work and Social Care) led a workshop on '*Transitional Safeguarding: Exploring opportunities and challenges in systems supporting young people and young adults who experience extra-familial risks*'.

- **Carlie Goldsmith** (Social Work and Social Care) presented a paper on behalf of herself and Michelle Lefevre on 'Navigating Complexity: Understanding innovation processes in social care'.
- While at the Conference, **Gillian Ruch** (Social Work and Social Care) additionally presented 'Promoting emotional literate participation and professional practice: Putting Kitbag to work', further developing her work on this resource for practitioners in children's services.

Janet Boddy was an invited panelist, alongside Ellen Broome (Managing Director, COramBAAF and Coram Family and Childcare) and Matthew Horne (Deputy Chief Executive, Innovation Unit) at the closing session of the CYPNow conference on 31 March. Their panel was focused on the theme 'Evaluate To Innovate: Why good evaluation is crucial to finding new ways of working in the post-Covid world'.

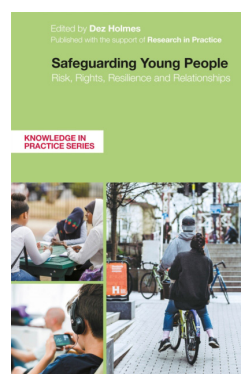
ESRC-funded PhD researcher, **Julia Winstone**, has been asked to provide copies of the thesis she is currently writing up on 'Understanding Restorative Justice with Children in Practice: Professional perspectives on a child's journey to restorative justice: A socio-legal approach' to Restorative Justice and Youth Justice practitioners and national charities once completed.

Psychology BA student, **Jess Marshall**, interviewed parents about social vulnerability in different developmental conditions for her undergraduate project, 'Social Vulnerability in Children with Autism Spectrum Condition and Wiedemann-Steiner Syndrome'. She will be presenting it with her supervisor, **Nicola Yuill** (Psychology), at the Neurodevelopmental Disorders conference in Edinburgh in June.

Jenny Hewitt (Social Work and Social Care) is currently bidding for funding from the Research Culture Seed (RCS) Funding opportunity for Early Career Researchers. She is proposing a forum event to discuss minority ethnic specific issues within research.

NEW PUBLICATIONS

- [Family Rights Group](#) have published an evaluation briefing paper this week which was led by **Lisa Holmes** (Education) and may be of interest to CIRCY readership.
- **Kristi Hickle** and **Michelle Lefevre** (both Social Work and Social Care) published a chapter for an edited collection for the interagency safeguarding practice field:
Hickle, K. and Lefevre, M. (2022) 'Learning to Love and Trust Again: A Relational Approach to Developmental Trauma', in D. Holmes (ed.) *Safeguarding Young People: Risk, Rights, Resilience and Relationships*. London: Jessica Kingsley, pp. 159-176



- **Lisa Holmes** (Education) published a new journal article in [Social Policy & Administration](#):
Suh, E., & Holmes, L. (2022): 'A critical review of cost-effectiveness research in children's social care: What have we learnt so far?' *Social Policy & Administration*, pp. 1-15.
- **Loreto Rodriguez** (Childhood and Youth PhD) is co-author of a recently published paper:
Capella, C., Azócar, E., Rodríguez, L., Lama, X., Núñez, L., Águila, D., Gómez, C., Espeleta, M., & Vania Vásquez, V. (2022): 'Psychotherapeutic change in children and adolescents who have been sexually abused: A model from participants' perspectives'. *Research in Psychotherapy: Psychopathology, Process and Outcome*, 25(1).

TWEET TIME!

Don't forget to follow us on twitter.

When you tweet about your research, tag **@SussexCIRCY** and we'll re-tweet you to enhance your visibility!

WANT TO BECOME A CIRCY MEMBER?

WHAT IS CIRCY?

The Centre for Innovation and Research in Childhood and Youth (CIRCY) is a pan-university research centre at the University of Sussex, with a membership that spans social sciences, arts, humanities and professional fields including social work, law, education and health. CIRCY's research is interdisciplinary and international in scope, united by a critical engagement with children and young people's lives in time, and a focus on the rights, voice and welfare of the child or young person at the centre of inquiry.

WHO CAN JOIN CIRCY?

CIRCY encourages academics, doctoral researchers and others across the university who write and research in these fields to become members.

WHAT DOES MEMBERSHIP INVOLVE?

CIRCY holds lots of events through the year which members can attend. These include seminars, reading groups, methodology workshops, writing retreats, and work in progress workshops where members can get feedback on research or writing ideas.

CIRCY JOURNAL

We have recently updated the [CIRCY Journal](#) with the inclusion of dissertations from our Childhood and Youth Studies MA students:

Meg Best

(winner of the Barrie Thorne Prize for Overall Academic Achievement):

'An Exploration of the Conception, Implementation, and Experiences of Education, Health, and Care Plans - and their impact on children and young people with Special Educational Needs and Disabilities'

Valeria Yáñez Cavajal

(winner of the Cathy Urwin Prize for Work with Greatest Impact on Practice):

'Formally Supported But Actually Isolated: Teachers Creating Fender-fluid Environments'

GET IN TOUCH!

If you're interested in taking part in any of our upcoming members events or other activities, or just want to find out more about CIRCY, contact Brontë McDonald: bm333@sussex.ac.uk.

And please let us know if you have any ideas for members' events or seminars, or need any support with developing research bids, or other research-related activities, such as networking events or conference attendance.



IDEAS IN ACTION

A space where colleagues can present new ideas for interdisciplinary feedback and suggestions, eg. a new or reworked bid, book proposals, or plans for knowledge exchange/impact generation.

Let us know if you would like to present your work this term, or if you would like one of the CIRCY team to review a bid, or advise on other work in progress.

We are happy to respond at short notice!

WHO'S WHO?

CIRCY Leadership Team

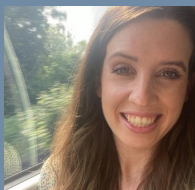
Director:

Michelle Lefevre (Social Work and Social Care)
E: M.Lefevre@sussex.ac.uk



Postgraduate Research Assistant (incoming):

Brontë McDonald
E:bm333@sussex.ac.uk



CIRCY Steering Group

Our Steering Group meets termly to guide and facilitate the work of CIRCY.

This term, we are delighted to welcome Hannah Field (English) to our Steering Group.

Current Steering Group members are:

- [Robin Banerjee](#) (Psychology)
- [Liam Berriman](#) (Childhood and Youth/ Social Work and Social Care)
- [Janet Boddy](#) (Education)
- [Fiona Courage](#) (Mass Observation Archive/ Library)
- [Nuno Ferreira](#) (Law)
- [Hannah Field](#) (English)
- [Kathryn Lester](#) (Psychology)
- [Jo Moran-Ellis](#) (Sociology)
- [Dorte Thorsen](#) (Geography)
- [Pam Thurschwell](#) (English)
- [Rebecca Webb](#) (Education)

If your research has the rights, concerns and/or perspective of children and young people at its heart, and you are interested in joining our Steering Group, please contact [Michelle](#). The minimum commitment is to attend a termly Steering Group meeting, and to attend or help facilitate at least one CIRCY event per term.

KEEP ON BLOGGING!

[Check out our latest blog posts!](#)

We are keen to hear from CIRCY members keen to blog about their research at any stage.

The blog can be as short as you wish.

We welcome blogs on any subject matter from any disciplinary background that take seriously how we listen to, hear, and engage with children and young people.

If you are interested in writing a blog, contact Brontë to discuss further.



UNIVERSITY
OF SUSSEX