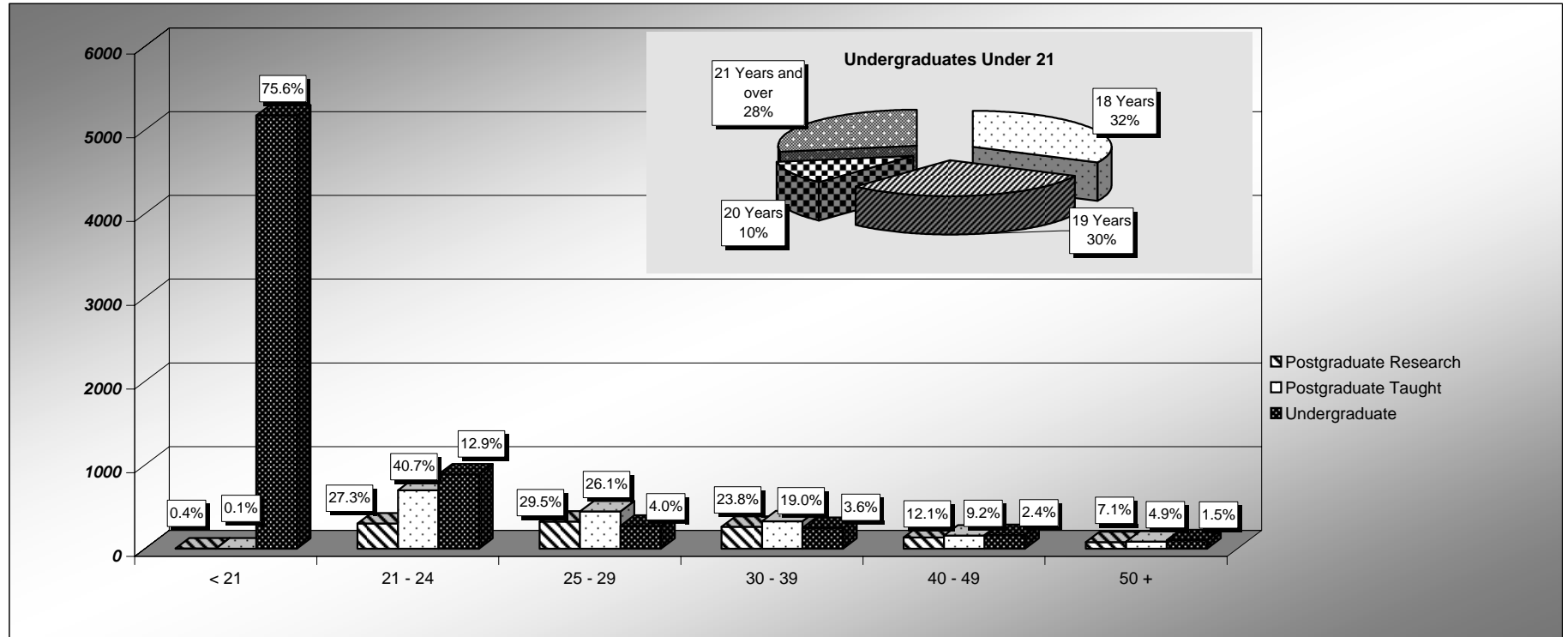


Age on Entry Analysis Total Students



	< 21		21 - 24		25 - 29		30 - 39		40 - 49		50 +		Total	
	Count	%	Count	%	Count	%	Count	%	Count	%	Count	%	Count	%
Postgraduate Research	4	0.4	301	27.3	325	29.5	262	23.8	133	12.1	78	7.1	1103	11.4
Postgraduate Taught	1	0.1	697	40.7	446	26.1	326	19.0	158	9.2	84	4.9	1712	17.7
Undergraduate	5173	75.6	886	12.9	273	4.0	249	3.6	162	2.4	100	1.5	6843	70.9
Total University	5178	53.6	1893	19.5	1044	10.8	837	8.7	453	4.7	262	2.7	9658	

These figures exclude CCE sub degree students

Undergraduate Under 21 Analysis includes CCE Part Time Degrees and V&E.

Age on Entry Analysis
Total Students