

Sustainability through Collaboration Or *Creating a roadmap*

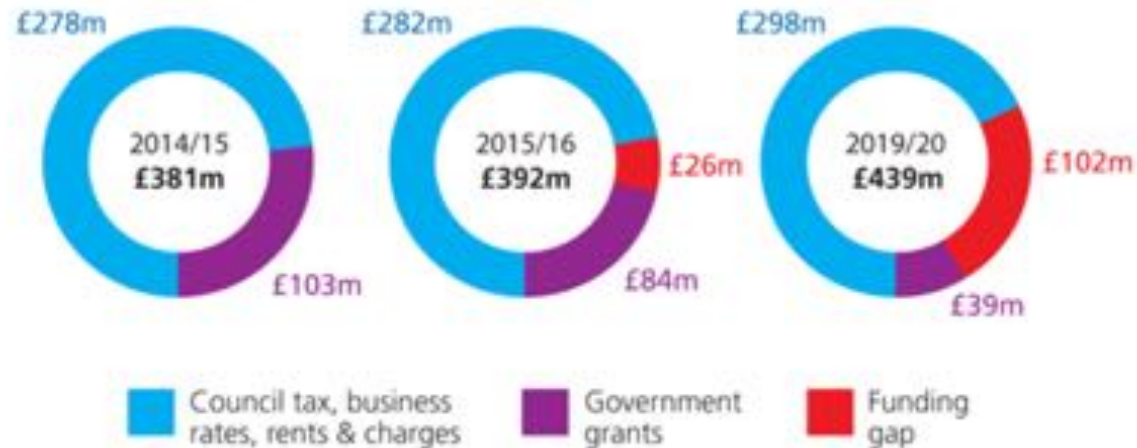


This project has received funding from the European Union's Seventh Framework Programme for research, technological development and demonstration under grant agreement no 603654.

Sustainability through Collaboration

- Series of 3 workshop (Spring 2016)
- ARTS project in collaboration with a core group of local stakeholders (thanks)
- Aimed to **understand** shifting national and local contexts of action, **explore** proposed responses and potentially **agree** steps to accelerate progress locally.





Our Challenges and Pressures

Public services are changing, Central government is continuing to reduce our funding.



Since 2010, we have reduced our costs by around £77 million.



We have to cut another £68 million over the next four years – assuming council tax increases by 1.99% each year – and find new ways to bring in more money.

Proposed City Council response

- Moving towards more collaborative ways of working: i.e. a Cooperative Council model / a Collaboration Framework / 21st century public servants
- Still unclear quite what this means in practice, but extent of change is potentially significant



21st Century Public Servant
University of Birmingham

Proposed City Council response

- Moving towards more collaborative ways of working: i.e. a Cooperative Council model / a Collaboration Framework / 21st century public servants
- Still unclear quite what this means in practice, but extent of change is potentially significant

Equalities Implications:

- 7.3 No EIA has been completed as both programmes are still in the emergent stage. These will be completed as part of the full business case and in relation to each neighbourhood hub that is proposed.

Sustainability Implications:

- 7.4 Consolidating property assets will reduce the council's carbon footprint. One of the proposals within the City Neighbourhoods programme is to develop an asset transfer policy, which will contribute to the ongoing sustainability of community infrastructure in the city.

Any Other Significant Implications:

- 7.5 Cooperative models in other authorities have realised significant savings. This has been due to their wholesale approach to change. If Brighton & Hove City Council is to realise similar savings, then it is vital we are not tentative about the scale of work involved, nor the significant shift in delivery it represents.

Crime & Disorder Implications:

- 7.6 The City Neighbourhood programme board has representation from the Community Safety team. Issues around crime and disorder will be addressed through the full business case and as further considerations are made by the board. Links will also be made with neighbourhood enforcement teams as these

From the ARTS research view:

This “significant shift in delivery” and governance approach represent an opportunity.

***It could accelerate progress to a more bio-diverse,
low carbon and sustainable city-region***

...or it could lock-in new practices that hinder this common objective.

Over 100 spaces in the city, but they are under pressure (£s)

Key considerations arising from the workshops:

- Open spaces offer huge potential for more sustainable practices.
- Diverse and ambitious.
- Community involvement is critical.
- Opportunities to link to public health and wellbeing
- Creating trust and clear lines of responsibility.
- Creating space for collaboration.
- No one-size-fits-all.

Collective steps agreed:

- Create an open forum.
- Develop links to public health.
- Deliver management plans on a phased basis.



Population set to increase to 300,000 by 2030; Affordable housing a key issue; new developments constrained

Key considerations arising from the workshops:

- Avoid demolition where possible.
- Selectively create demonstration projects
- Increase sustainability requirements of local planning
- Increase democratic engagement.

Collective steps agreed:

- Create a working group
- Actively shape the City Plan: Part 2
- Learn more about the planning process

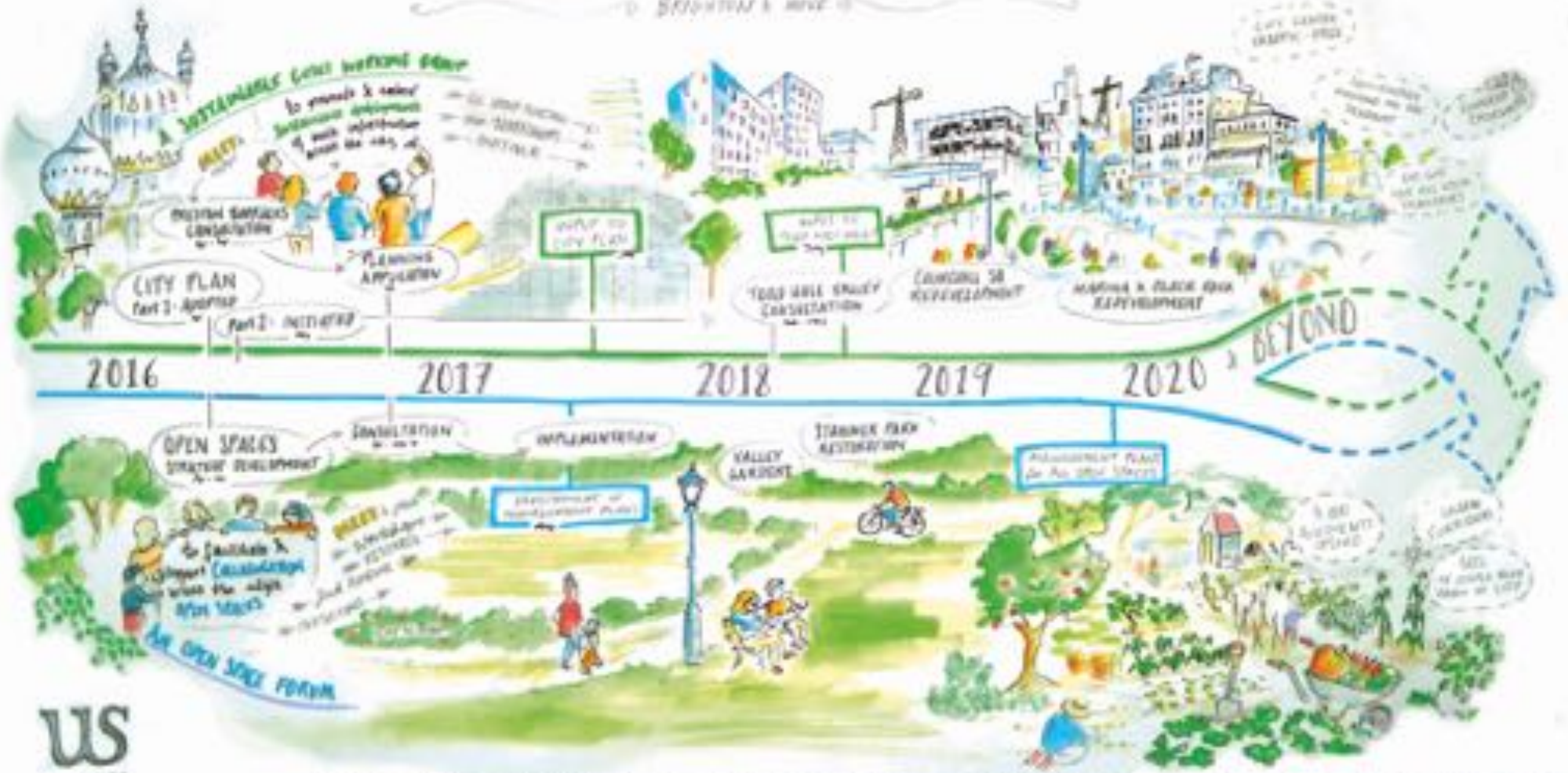


PROG - Culture - Quality - Transport

Environment - Justice - Education - Resilience

ROADMAP for A SUSTAINABLE CITY

by Brighton & Hove City Council



UPSCALING - REPLICATING - PARTNERING - EMBEDDING

by the ARTS project
COLLABORATION