

ANNUAL REPORT  
2020-21

# CSWIR

CENTRE FOR SOCIAL WORK  
INNOVATION AND RESEARCH

**‘Creativity and togetherness are central  
for social work in all its forms across the world’**

**US**

UNIVERSITY  
OF SUSSEX

The image and sentiment on this report cover refer to a temporary artwork of coloured ice 'which evokes a sense of hope and happiness' created by children in Sinebrychoff Park, Helsinki, Finland, and submitted by CSWIR member, Mona Livholts, for CSWIR's World Social Work Day photo collage in 2021.

## Contents

<b>Welcome</b>	<b>2</b>
<b>People</b>	<b>3</b>
Advisory Group	4
Membership	5
Doctoral Community	6
<b>Knowledge Exchange</b>	<b>7</b>
Collaborations and other events	9
<b>Research Projects</b>	<b>12</b>
Forthcoming	13
<b>Publications</b>	<b>14</b>
Forthcoming	15

This image on this page is entitled "Tears" by Safet Zec: It is located where 8,372 Bosnian Muslim men and boys lived their last moments prior to the Srebrenica genocide. It was submitted by Dr Reima Ana Maglajlic, University of Sussex, for World Social Work Day 2021.

# Welcome

The writing for this report comes on the back of the third CSWIR Psychosocial Symposium. This year's event focused on how objects can provide creative catalysts for research focused conversations - catalysts, conversely, that slow down and focus our attention. The symposium conversation was as rich and stimulating, as ever, and particularly striking was the sense of community that the event evoked. And this is pivotal to CSWIR's mission - to create a creative and containing space that encourages innovation and research.

With this in mind, this report highlights other events in 2020-21 that have contributed to this endeavour.



## People

### **Professor Gillian Ruch** **CSWIR Director**

It is genuine privilege to lead CSWIR, alongside Dr Henglien Lisa Chen (Deputy Director) and with Avanka Fernando's (Research Assistant) support. Working as a team, it is a powerful reminder of how much more can be achieved when we work together.



Strengthening our research and innovation community owes much to our developing relationships, locally, nationally and globally. In celebration of World Social Work Day 2021 and the theme *Ubuntu: I Am Because We Are* - Strengthening Social Solidarity and Global Connectedness. We asked our members to send in their global contacts and through this we mapped out our global network (see map below). Members of our global network contributed pictures of objects that represented social work for them in their own specific national context and which spoke to the *Ubuntu* theme. These pictures are featured throughout this report and on our website, reflecting the diversity and colourful experiences of social work of our global network. Our Advisory Group meeting this year reflected this growth with representation from our new collaboration with colleagues in Australia, from the experts by experience community and from the voluntary sector. We hope with these more expansive and inclusive advisory relationships our commitment to co-creation will be consolidated and developed.

### **Dr Henglien Lisa Chen** **CSWIR Deputy Director**

This year has also seen CSWIR Deputy Director, Dr Henglien Lisa Chen, make an invaluable contribution to the development of CSWIR. Lisa has recruited a number of adult social work and social care experts to the CSWIR Advisory Group, enhancing the Centre's interdisciplinary, cross-institutional and cross-sector profile. As a result, the Advisory Group now has a good balance of diverse experts in children's and adults' social work and social care. Lisa also increased CSWIR's events and support to adult social work and social care research impact and knowledge exchange. A very particular contribution made by Lisa has been the profiling of co-creation as a core principle and approach of CSWIR relationships and activities. Read more below on our collaboration with Social Work Innovation Research Living Space (SWIRLS) at Flinders University in Adelaide, Australia.



### **Avanka Fernando** **CSWIR Research Assistant**

Communities only exist because of relationships and develop and grow through them. Pivotal to the success of CSWIR activities this year has been Avanka Fernando who in January 2021 took up her role as the CSWIR



Research Assistant. Avanka is a doctoral researcher in the School of Global Studies at the University of Sussex and is currently located in Colombo, Sri Lanka, completing her fieldwork. Despite the challenges of establishing our working relationship and supporting Centre activities via long-distance IT connections, Avanka has made an invaluable contribution to enabling the CSWIR community to grow.

*"It's been such a privilege to have an opportunity to work with CSWIR. Even though I have been working remotely from Sri Lanka, I have enjoyed being involved in organising exciting events and interacting with the wonderful people associated with CSWIR. Most importantly, I have gained valuable insights about the different processes, people and relationships that make the profession of social work so unique."*

Avanka

### **Heather Stanley** **Communications Officer**

The communication and publications of CSWIR is made possible through the work done by Heather Stanley, Communications Officer for the School of Education and Social Work.



Her support during the year has been central to the internal and external communications about the work of CSWIR and its related activities.

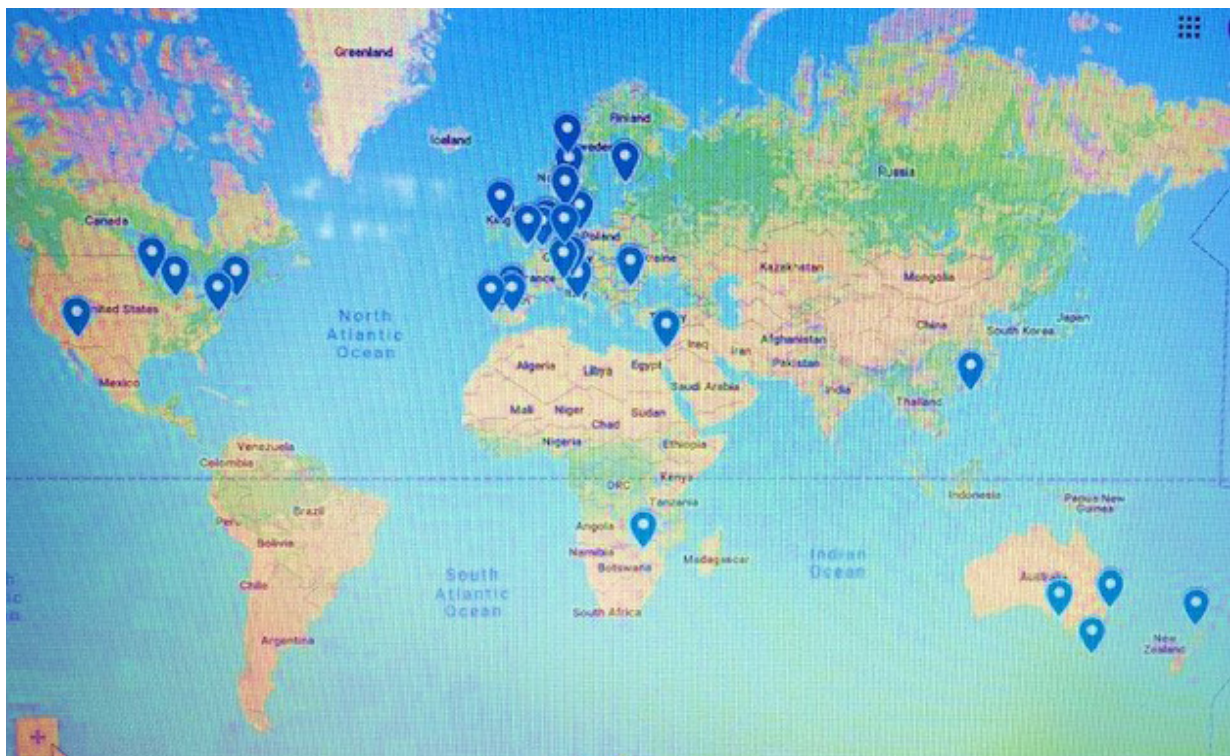
## People: Advisory Group

The annual Advisory Group is a group of colleagues spanning the breadth of CSWIR's activities and comprises colleagues from different Schools within the University, adult and children's social work colleagues from our partner local authorities and voluntary organisations, service user and carer representatives and academic colleagues from overseas. Our 2021 meeting took place in July and we discussed the key priority areas and activities for the coming year. For the academic year 2021-22 it was decided to focus on the themes of Uncertainty and Decolonisation. Importantly the CSWIR vision for research and knowledge exchange is in alignment with the priorities and vision of the [ESW Strategic Framework for Research with Impact: 2019-25 \(under 'ESW Strategic Plan 2019-25'\)](#).

- **Gillian Ruch**  
CSWIR Director  
Professor of Social Work, Department of Social Work & Social Care, School of Education & Social Work, University of Sussex
- **Henglien Lisa Chen**  
CSWIR Deputy Director  
Lecturer in Social Work, Department of Social Work & Social Care, School of Education & Social Work, University of Sussex
- **Philip Blurton**  
Principal Social Worker, East Sussex County Council, Adult Social Care Mental Health Social Work
- **Richard Cattell**  
Principal Social Worker (Adults), East Sussex County Council
- **Nicola McGeown**  
Principal Social Worker, (Children & Families), East Sussex County Council
- **Tom Stibbs**  
Principal Social Worker (Children & Families), Brighton & Hove City Council
- **Janet Boddy**  
Professor of Child, Youth & Family Studies, Department of Education, School of Education & Social Work, University of Sussex
- **Jo Moran Ellis**  
Professor of Sociology and Head of the School of Law, Politics & Sociology, University of Sussex
- **Paul Shuttleworth**  
Doctoral Researcher & PGR representative, Department of Social Work and Social Care, University of Sussex
- **David Weir**  
Professor of Computer Science, Department of Informatics, DIGIT, University of Sussex Business School
- **Teppo Kroge**  
Professor of Social and Public Policy, Department of Social Sciences and Philosophy, University of Jyväskylä.  
*Teppo leads the Centre of Excellence in Research on Ageing and Care (CoE AgeCare) and co-ordinates the Research Group on Care Policy (CARPO)*
- **Tam Cane**  
Lecturer in Social Work, Department of Social Work and Social Care, University of Sussex
- **Carmela Bastian**  
Lecturer in Social Work, Social Work Innovation Research Living Space (SWIRLS), College of Education, Psychology and Social Work, Flinders University, Adelaide, Australia.
- **Sarah Wendt**  
Professor of Social Work, Social Work Innovation Research Living Space (SWIRLS), College of Education, Psychology and Social Work, Flinders University, Adelaide, Australia.
- **Valerie De Schaller**  
Service Users and Carer's group representative, Associate Tutor, Department of Social Work and Social Care, University of Sussex
- **Kath Sykes**  
Implementation Manager, Living Well with Dementia, Applied Research Collaboration, Kent, Surrey and Sussex.
- **Helen Drew**  
Lecturer in Psychology, School of Psychology, University of Sussex
- **Emily Kenward**  
Founder and CEO of Time to Talk Befriending, Brighton and Hove, Adur and Worthing, Sussex.

## People: Membership

CSWIR membership constitutes many academics, practitioners, carers, care providers and service users from across the world. The global network of CSWIR members is reflected in this map compiled for World Social Work Day 2021.



## People: Doctoral Community

CSWIR supports social work doctoral research undertaken on the Doctor of Social Work (DSW) and PhD courses. Doctoral researchers are an integral part of CSWIR events and activities. The CSWIR provides opportunities for our doctoral community to engage in knowledge exchange, collaboration and training.

### Current doctoral researchers

#### Jo Williams (First year)

*"I am grateful for the reflective spaces provided by the team for those undertaking research. This has provided an opportunity to stop and think about my confidence as I progress with my PhD, share my feelings about this with others and learn together. I particularly like the way in which these sessions are facilitated, as they are accessible, containing, informative and supportive."*

#### Amy Lynch (First year)

*"I have really appreciated being part of the CSWIR community for the connection it provides between research and practice. In the last year as I have been developing my doctoral research proposal, I have been able to reflect on conversations and activities within the group to help guide my research plans. I found the discussions in a many minds group which explored our experiences of Covid-19 to be valuable in helping me think about my ethical position in relation to the additional demands my research would place on managers and practitioners in the context of remote-working and virtual-practice challenges."*

#### Anna Hutchings (First year)

*"CSWIR events have helped to reduce my feelings of isolation by providing an important point of connection with other students and faculty. The two events I attended this year enabled me to discover that online mediums can enable reflective and creative spaces with others. I particularly enjoyed being introduced to Professor Mark Doel's virtual exhibition 'Social Work in 42 Objects (and more)' in a Psychosocial Symposium at which each participant chose an object which reflected their relationship to research which was then shared and discussed. There was something distinctly valuable about talking and thinking about tangible objects when so much day-to-day interaction has become virtual. I appreciated the interwoven personal, professional and researcher stories that emerged from focusing on a participant's selected object(s) which prompted me to consider the use of objects in my own research."*

### Recently completed

#### Paul Shuttleworth

Paul's doctoral thesis on 'What matters to children living in kinship care: Another way of being a normal family' was described by his examiner as the *"first kinship care study that has solely focused on children's views to explore the meaning of safe family life and permanence for children and adds significantly to the limited body of social work research on kinship care."*

Paul is a member of the CSWIR Advisory Group and presented a Researching Professional Practice webinar. He also conducted a training programme for staff at Brighton and Hove City Council on children in kinship care.

*"Throughout my time as a PhD researcher, I found CSWIR invaluable in terms of support for innovative research, but also for my learning and personal development. It was so useful to have a non-judgmental space where we could discuss ideas and develop new approaches to shape better social work research, and ultimately help instigate change for the children, adults, and families we work with."*

#### May Nasrawy

May completed her doctoral thesis on 'Living on the margins: Understanding wellbeing through the everyday lived experiences of young Arabs/Palestinians in Jerusalem'. This seminal work and the robust defence of her thesis was commended by her examiners. May was a member of the CSWIR team that facilitated the series of Association of Professors of Social Work webinars. She also facilitated a Doctoral Research in Progress webinar in July on 'Surviving My Online Viva: A final test or a whole new beginning?'

*"Throughout my doctoral journey, CSWIR has held many key events, workshops, seminars and professional groups which have allowed me to engage with others' experiences and interests and have hugely contributed to my own development. These events have also provoked my thinking and perception about a number of issues within the field of social work and social care. I am also grateful for the opportunities CSWIR has created to support my professional development through involvement in ongoing projects where I could apply my academic skills in practice and enhance my project evaluation and communication skills. Furthermore, CSWIR has promoted my own seminars and presentations and constantly celebrated all of our achievements on its website and social media platforms - particularly Twitter and the Centre's website. This has definitely contributed to the dissemination of my research findings to the wider community, enabled me to connect with other professionals and PGRs across the country, and enabled improved participation in events thereby supporting our work and the doctoral community."*

# Knowledge Exchange

## BASW 80-20 Campaign Online Webinar

In December 2020, a follow-up event to the BASW 80-20 TLC Kitbag conference 2020 was convened online. The event provided an opportunity to share ongoing developments in the introduction of Kitbag to local authorities, and stories about its impact.

### Working virtually with children and families: A TLC Kitbag Conversation

Professor Gillian Ruch and Dr Margaret Hannah  
December 2020



## Researching Professional Practice Seminars

The 'Researching Professional Practice' seminars were held over the academic year and provided generative spaces for academics, doctoral students and practice colleagues to share and exchange ideas and experiences relating to conducting research in professional contexts. As a bridge for the research-practice interface, these forums are important spaces for the cross-fertilisation of thinking across professional and disciplinary domains.

## Magic Moments

In April, Nick Andrews from Swansea University facilitated a fascinating workshop entitled: 'Magic moments': An appreciative storytelling approach to learning and development.

Inviting participants to share their 'magic moments' from their own professional experiences helped them to directly engage with the ideas that Nick shared and understand the power of storytelling and co-design as mediums for research and knowledge exchange.

## Making research evidence engaging through stories

### Before: The bullet point

'We all need to make the effort to see and hear the individual behind the label or diagnosis, taking into account the increasing diversity of older people as a demographic group'

Blood 2013:

<https://www.jrf.org.uk/report/better-life-valuing-our-later-years>

### After: There's more to me

than meets the eye



## Children in Kinship Care

In February, Paul Shuttleworth conducted a webinar for the 'Researching Professional Practice' forum on 'What Matters to Children in Kinship Care'. He also conducted a training programme for staff at Brighton and Hove City Council on what is important to children in kinship care. Paul describes how the workshop 'focussed on methodologies and ethical methods for obtaining children's views'. It highlighted that children's views must be included in meaningful ways, especially with febrile topics such as kinship care. Discussion took place around how child participation is often submerged and restricted by monological thinking which instigated a proposal for a dialogical approach which can be augmented by critical realism. Together, these can acknowledge the fallibility inherent in all knowledge production whilst ensuring a continuous critique through the stratification of reality, co-production, collaboration, reflection and reflexivity.

## Third CSWIR Psychosocial Symposium

CSWIR's third Psychosocial Symposium was held in July 2021. Louise Sims reports on her experience of the event:

*"In July 2021 we held our third CSWIR Psychosocial Symposium. Professor Mark Doel helped researchers explore the possibilities afforded by objects in research and practice. Participants were invited to bring to the screen an object that symbolised their relationship to research. The symposium was organised around whole group presentation, pair work and 'snowball' small groups. The structure helped facilitate warm and lively conversations, as objects helped us to make connections across the virtual space. Mark shared his work as the curator of the virtual exhibition Social Work in 40 Objects. The exhibition now contains photographs of more than 160 objects and their stories, contributed by people from around the globe. This work has important links with the social work practice initiative Kitbag which is using objects to build emotional and social literacy in children, families and social workers."*

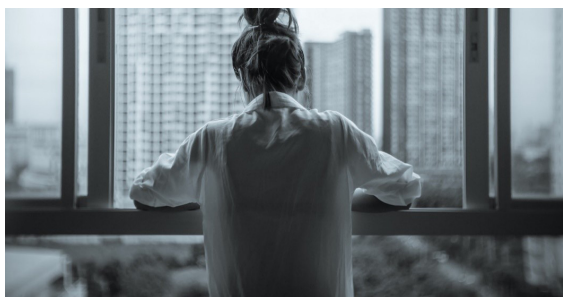


## Listening Post – Reflective Forum

The Listening Post events were a powerful new forum in the CSWIR calendar.

Based on a model developed by the Organisation Promotion of Understanding of Society (OPUS), the Forum provides a space for reflective conversations about contemporary social issues. The event is structured in three stages: stage one an open conversation about peoples' experiences of everyday living; a second stage where themes arising from the first stage conversation are identified and finally, stage 3 where the group seeks to develop a hypothesis that encompasses the preceding conversation and themes, to shed light on current societal phenomena. Whilst OPUS Listening Posts focus on the everyday in all respects the CSWIR ones were more specifically focused on the impact of the pandemic context on our lived experience as research students, academics and practitioners.

It is not possible to do justice to the richness and affect of these exchanges but some of the themes identified included: the presence of the absence; silence and death; the impact of the loss of connectedness, social rules, absence of norms and people, death on the creation of a space and opportunities for transformation; questions about what is real and what is not real?; disembodiment and dissonance; shifting, fluid spatial and temporal boundaries; agency, power and privilege; the vulnerability of the human race.



## Ageing Well

CSWIR co-hosted a series of 'Ageing Well' knowledge exchange webinars and podcasts presented by experts from the University's Innovation & Business Partnerships team, UKRI ESRC, Aging 2.0 and Always Possible. Speakers included a wide range of social scientists from CSWIR, the University of Sussex Business School, the University of Sussex Science and Policy Research Unit (SPRU) and the University of Jyväskylä in Finland. Also by service users and carers, practitioners working within the care sector (ie. Time to Talk Befriending and Impact Initiative), those who have set up social enterprises (ie. Story Chaplain), and industrial partners (ie. Kinseed).

The series covered a wide range of topics on technologies, person-centred care, relationship-centred care, health inequality and the new normal of ageing care following the COVID-19 pandemic:

- **Ageing Well in the Digital World: Older people can help**  
Part of the ESRC Festival of Social Sciences  
Date: 13 November 2020
- **What should be at the centre of care? The person or the relationship**  
Part of Ageing Well: Changing the Conversation webinar  
Date: 23 February 2021
- **Ageing Well: Person-centred design**  
Part of Ageing Well: Changing the Conversation podcast  
Date: 6 April 2021
- **How do we Resist Inequalities in the New Normal? Shaping the future of ageing care and the care workforce**  
Part of Ageing Well: Changing the Conversation podcast  
Date: 10 May 2021

Each of the events was well received and achieved maximum capacity (70). Participants included the general public, practitioners, care providers (incl. NGO, social enterprise and private), industrial, local authorities and NHS administrators and academics - local, national and international. The events stimulated virtual networking of groups with shared interest. Example comments:

*"Really interesting to hear the different technology approaches due to gender. We found a similar split in face-face services and group work, we are working out ways to work with more older men."*  
NGO participant, Independent Age

*"Thank you for giving us a lot of food for thought! I really like your quote on relationship between continuity and quality of care."*  
Academic participant, University of Helsinki

*"I currently work in the /command centre/discharge hub for N Yorks. CC. Which have lots of in common with East Sussex, our demographic is also a retired community. The only time I see people is when I visit a hospital for a Mental Capacity Assessment."*  
Social worker participant,  
North Yorkshire County Council

*"[R]eally enjoyed this conversation. Any follow ups planned? Would be great to keep the conversation going and build some more collaborations...."*  
Academic participant, University of Surrey

[For further information and links to recordings of events, visit the CSWIR website.](#)

## APSW Knowledge and Evidence Events

In May and June 2021, CSWIR supported the UK's Association of Professors of Social Work (APSW) to deliver four on-line Knowledge and Evidence Events (KEEs) to recall and highlight key messages about children's social care and social work. Intended to inform the sector of the current state research in the field of children social work and social care, the KEEs coincided with the Department for Education commissioned review of children's social care whilst independent of the review it is hoped that these events will have helped to inform the review's thinking and subsequent recommendations.

Registration for each KEE was at capacity (1,000) and approx. 500 people attended each of the events. The four KEEs focussed on:

1. Alternative Child Care Social Work Service Delivery Models
2. Equality, Diversity & Inclusion in Children's Social Care & Social Work
3. Everyday Social Work with Children and Families
4. Looked After Children and Care Leavers

Each of the four KEEs had presentations by professors of social work and social policy. All had experience as front-line practitioners within children's social care and social work, as well as being researchers, educators, managers and leaders within children's social services in the UK and internationally. Within each KEE there was the opportunity for those attending the on-line Zoom sessions to contribute Chat comments and lively conversations were generated via this medium. Four

[KEE briefings are now available on the APSW website.](#)

## Knowledge Exchange: Collaborations and other events

### CSWIR – SWIRLS collaboration

The Centre for Social Work Innovation and Research (CSWIR) and [Social Work Innovation Research Living Space](#) (CSWIR-SWIRLS) collaboration was initiated by CSWIR Director, Gillian Ruch. Under the guidance of Hengliem Lisa Chen, we have adopted a co-creation methodology approach to the development of this collaboration which:

- values the diverse expertise of CSWIR-SWIRLS staff, PGR and service users and carers
- maximises the inclusiveness of participation, contribution and creativities
- strengthens the sense of belonging and togetherness.

The collaboration process started with a CSWIR-SWIRLS Working Group preparatory workshop in May involving 12 CSWIR-SWIRLS members. That was followed in June with the first Meet & Greet for CSWIR-SWIRLS colleagues (incl. staff, researchers and service users and carers) which took the form of a co-creation workshop attended by 27 CSWIR-SWIRLS members. The co-creation process of the cross-centre collaboration was warmly welcomed - as the members' comments below attest - the collaboration process being experienced as well-structured with clearly defined objectives:

*"[A member of SWIRLS] telling an outline of her story made abstract notions real for me. It struck me that maybe that happens to SW students when they hear my story. I now see even greater benefit in including service users/carers in the SW curriculum and hope to champion this in future."*

Service User member of CSWIR

*"I loved speaking to other researchers and students. It inspired me to hear about what people are studying."*

Researcher member of SWIRLS

*"It has been a privilege to be a student representative in this forum and has opened up new connections across the globe. It has also given a welcome opportunity to co-create something with senior colleagues and learn from their wisdom about research and ways of networking. CSWIR models such an excellent way to be collaborative and innovative and I feel fortunate to have these opportunities."*

Researcher member of CSWIR

*"It was an opportunity to get to know people and build relationships which is the foundation of collaboration."*

Academic member of SWIRLS

*"It was a positive and collegial meeting, giving us a chance to get to know each other and explore possibilities for future engagement and collaboration."*

Academic member of CSWIR

From the above-mentioned workshops, a number of sub-collaboration groups have already been co-created on the topics of trauma responsive practice, decolonisation, service users and carers involvement in research and teaching, while the CSWIR-SWIRLS co-creation workshops are ongoing to further co-create collaboration relationships and opportunities.

The image below contributed by SWIRLS, Flinders University for World Social Work Day 2021 is the Aboriginal and Torres Strait Islander Map of Indigenous Australia. The theme of the image is *'Partnership to achieve shared visions for reconciliation'* - sub caption: *'SWIRLS committed to truth telling about the history of social work education, research and practice in Australia'*.

At each CSWIR-SWIRLS event, the SWIRLS team introduce themselves by citing their commitment to the importance of the first nations, their people and history, and emphasise that this is quintessential to social work education, research and practice in Australia.

The CSWIR-SWIRLS collaboration is an important opportunity for both centres to engage with and learn from each other.



## World Social Work Day 2021

In celebrating the World Social Work Day 2021 theme *Ubuntu: I Am Because We Are - Strengthening Social Solidarity and Global Connectedness*, members of the CSWIR global network sent in pictures of objects that represented social work for them in their own specific national context. Submissions ranged from the role of social work and social worker, ethics and values of social work, concepts in social work such as hope, happiness, resilience, strength, focus on those who are particularly vulnerable, social work and everyday life, movements within social work, the Covid-19 pandemic and challenges for social workers and service users, the new normal of social work with online collaborations and the need to encompass digital tools to remain close to people.

The water-based banner theme for the World Social Work Day designed by Jeshur Fernando from Sri Lanka, reflects the colour and fluidity of social work and demonstrates that water and the oceans are an important symbol of global connectedness.

[A photo gallery of images, captions and contributors can be found on the CSWIR website.](#)



## Research Projects

CSWIR members have engaged in research which aligns with the University's 2025 strategy and the School of Education and Social Work's vision for research.

Our research aims to make a difference to policy, practice and lived experience, to inform a critical and rigorous approach to knowledge production, to engage actively with practitioners, carers, care providers and service users who have a stake in the work of the CSWIR, and support the research development of students while building research capacity through co-production.

- **Dr Laia Becares** was awarded a research project by ESRC Centres and Large Grants which focussed on 'Exploring Racial and Ethnic Inequality in a time of Crisis'.  
Period of research: 21 Sept 2020 - 20 May 2021  
Laia was also awarded a consultancy for the University of Manchester on a 'Rapid Evidence Review: Inequalities in relation to COVID-19 and their effects on London'.  
Period of research: 8 June - 14 Aug 2020
- **Dr Laia Becares** is to receive funding from the UK Research and Innovation Fund for the research project 'COVID BAME Highlight: The social, cultural and economic impacts of the pandemic on BAME groups in Britain'.  
Period of research: 18 Dec 2020 – 17 June 2022
- **Professor Janet Boddy**, Professor Gillian Hampden Thomson and Dr Rebecca Webb were funded by the National Lottery Community Fund for the 'Evaluation of a Better Start' [External] project.  
Period of research: 31 Mar 2021 – 31 Mar 2026
- **Professor Janet Boddy** was awarded funding from the Nuffield Family Justice Observatory for a 'Rapid Evidence Review on Contact'.  
Period of research: 16 Jan – 15 May 2020  
She was awarded the research project DfE Innovation Programme Wave 2 Evaluation of 'Pause: Supplementary Analysis for Pause of Data on Contraceptive Use and Reproductive Health' funded by Pause Creating Space For Change.  
Period of research: 20 July – 30 Sep 2020
- **Dr Tam Cane** was awarded a consultancy for Anti-racism and Equality Awareness training for business executives funded by Amaechi Performance Systems.  
Period of research: 1 Dec 2020 – 31 July 2021
- CSWIR Deputy Director, **Dr Henglien Lisa Chen**, worked as a consultant for the project 'Staying Together, Recovering Together' funded by Time to Talk Befriending. She took this opportunity to include and nurture the research skills of Catherine Woods, a Social Work BA student at the University of Sussex, as part of the consultation project. The study found that there is no one-size-fits-all solution to combatting loneliness and isolation.  
Period of research: 1 Oct – 30 Nov 2020
- Social Work & Social Care PhD researcher, Vicky Bromley, and **Dr Henglien Lisa Chen** have been awarded funding from the Business Engagement Fund as part of *Business Boost 2020 programme* under UKRI-ESRC and SeNNS to support social science doctoral researchers to develop and enhance their skills to support their engagement with business. Vicky is working with and being supervised by Lisa in partnership with Cush Health Ltd, Worthing Hospital and care homes to co-design exercise video clips with older people and their families, friends and care staff for the health care platform of Cush Health Ltd.  
Period of research: 16 July - 31 Aug 2021
- **Dr Kristi Hickle** was awarded funding by the Esmee Fairbairn Foundation for research project 'Evaluation of Safer London's Harmful Sexual Behaviours Service'.  
Period of research: 1 Mar 2021 – 31 Dec 2023
- **Professor Michelle Lefevre** and **Dr Kristi Hickle** headed a consultancy funded by East Sussex County Council on 'Child Criminal Exploitation in the South East of England' on family experiences and professional responses.  
Period of research: 1 May 2019 – 30 June 2020
- **Professor Michelle Lefevre**, **Dr Tam Cane** and **Dr Kristi Hickle** were awarded funding by the Department for Education's Children's Social Care Innovation Programme Grant for the research project 'Evaluating the Embedding of a New Contextual Safeguarding System in the London Borough of Hackney'.  
Period of research: 1 Feb 2021 – 31 Mar 2022
- **Professor Michelle Lefevre** was awarded a consultancy by OPCIT for 'Research for Risk issues in Domestic Abuse Involving Adolescents and Parents'.  
Period of research: 16 Feb – 31 Mar 2021
- **Barry Luckock** was awarded funding by East Sussex County Council for a research project with the East Sussex Safer Relationships Perpetrator Programme evaluation.  
Period of research: 1 Sept 2020 – 30 Sept 2021

- **Dr Reima Ana Magalajlic** worked as a consultant for the European Union funded project 'Evaluation of the Proposal Submitted in Response to the Following Call for Proposals'. Period of research: 2 Oct 2020 - 4 Jan 2021. She also served as Editor for the *British Journal of Social Work*, funded by the British Association of Social Workers. Period of service: 1 July 2020 – 1 July 2021
- CSWIR Director, **Professor Gillian Ruch** - in partnership with Dr Margaret Hannah from the International Futures Forum - was awarded funding from the What Works Centre For Children's Social Care (WWCSC) for practice intervention 'Promoting the social and emotional wellbeing of children who have experienced trauma: Putting Kitbag to work'. The intervention will be evaluated by the WWCSC. Period of research: 1 Nov 2020 – 30 June 2022
- **Professor Rachel Thomson** was awarded funding from the Sussex ESRC COVID Extension Fund for the research project 'Reanimating Data: Experiments with people, places and archives'. Period of research: 1 Dec 2020 – 31 Aug 2021



*'Resilient, committed, strong ...in these harsh times'. Image submitted by Emilio Jose Gomez Ciriano, Spain, for World Social Work Day 2021*

## Research Projects: Forthcoming

- **Dr Henglien Lisa Chen** was awarded ZINC/UKRI catalyst as part of UKRA Healthy Ageing Challenge Awards. The Award is part of the 'Healthy Longevity Global Grand Challenge' founded by the U.S. National Academy of Medicine - a worldwide movement to improve physical, mental and social wellbeing for people as they age. The project aims to co-produce a document that describes 'mobility that matters' to older people within a supported-living setting, and to co-design the use of a wearable device to enable older people to 'move meaningfully' and to 'move more'. Lisa will lead the co-design and co-production elements of the study, working alongside Dr Khalid Ali (Brighton & Sussex Medical School) in collaboration with Dr Sally Fowler-Davis (Sheffield Hallam University) and in partnership with supported housing provider, ExtraCare, and industrial partner, Cush Health Ltd. Period of research: 1 Sept 2021 - 31 Aug 2022
- **Dr Henglien Lisa Chen** has been awarded funding from the ESRC IAA to review and critique the use of co-creation approaches in the development of digital innovation within health and social care context. The project will be led by Dr Maja Golf-Papez and co-led by Professor Debbie Keeling (both University of Sussex Business School) and Lisa, in partnership with The Good Company People. Period of research: 1 Sept 2021 - 31 Aug 2022
- **Professor Elaine Sharland**, Dr Liam Berriman, Perpetua Kirby and **Professor Gillian Ruch** have received funding from the Nuffield Foundation for research project 'Local Learning, National Change: Using data and voice to improve children's outcomes'. Period of research: 1 Jan 2021 - 31 Dec 2025

## Publications

- Bakketeig, Elisiv, **Boddy, Janet**, Gundersen, Tonje, Østergaard, Jeanette, Hanrahan, Fidelma (2020): 'Deconstructing doing well; what can we learn from care experienced young people in England, Denmark and Norway?', *Children and Youth Services Review*, 118 pp. a105333 1-12. ISSN 0190-7409
- **Boddy, Janet**, Wheeler, Bella (2020): 'Recognition and justice? Conceptualizing support for women whose children are in care or adopted', *Societies*, 10 (4). pp. a96 1-21. ISSN 2075-4698
- Breheny, Mary, Stevenson, Brendan, **Bécares, Laia**, Abelson, Jamie, Rafferty, Jane, Cormack, Donna (2021): 'Tabulating experiences of racism and racial discrimination across the life course', *Stigma and Health* ISSN 2376-6972
- **Cane, T.** (2021): 'Attempting to disrupt racial division in social work classrooms through small-group activities', *The Journal of Practice Teaching and Learning*, 18(1-2)
- Capella, Claudia., **Boddy, Janet** (2021): 'Listening to the "Opinista"? Relational understandings of voice and silence in a multi-perspective narrative study of child psychotherapy', *Children & Society* ISSN 0951-0605
- **Chen, H L.**, Woods, C, Godley, C and Kenward, E (2021): *Staying together recovering together: Covid-19 research report*. Time to Talk Befriending, Brighton and Hove, Adur and Worthing, Sussex.
- **Damman, Jeri.**, Johnson-Motoya, Michelle, Wells, Susan J and Harrington, Kelly (2020): 'Factors associated with the decision to investigate child protective services referrals: a systematic review'. *Child and Family Social Work*. pp. 1-20. ISSN 1356-7500.
- Hampson, Martha, Goldsmith, Carlie, **Lefevre, Michelle** (2021): 'Towards a framework for ethical innovation in children's social care'. *Journal of Children's Services* ISSN 1746-6660
- Kneale, Dylan, **Bécares, Laia** (2021): 'Discrimination as a predictor of mental health issues among LGBTQ+ people during the COVID-19 pandemic: cross-sectional analysis of the online Queerantime Study'. *BMJ Open*, aa pp. a049405 1-11. ISSN 2044-6055.
- **Maglajlić, Reima Ana**, Vejzagić, Halida, Palata., Jasmin and Mills, China (2020): *Madness after the war. Experiences and life stories of people who experienced distress before, during and after the war in Bosnia and Herzegovina*. Other. The Association for Mutual Assistance in Mental Distress.
- Moon, Deborah., **J, Damman**, Jeri L and Romero, Aly (2020): 'The effects of primary care-based parenting interventions on parenting and child behavioral outcomes: a systematic Review'. *Trauma, Violence and Abuse*, 21 (4). pp. 706-724. ISSN 1524-8380
- Nazroo, James, **Bécares, Laia** (2020): 'Evidence for ethnic inequalities in mortality related to COVID-19 infections: findings from an ecological analysis of England'. *BMJ Open*, 10 (12). pp. a041750 1-6. ISSN 2044-6055
- Nolas, S.-M., **Watters, C.**, Pratt-Boyden, K. and **Maglajlic, Reima Ana**. (2020): '[Place, mobility and social support in refugee mental health](#)', *International Journal of Migration, Health and Social Care*, Vol. 16 No. 4, pp. 333-348
- Preston, Oli, Godar, Rebecca, **Lefevre, Michelle, Boddy, Janet**, Firmin, Carlene (2021): 'Considerations in the use of local and national data for evaluating innovation in children's social care', *Journal of Children's Services* ISSN 1746-6660
- **Shuttleworth, Paul Daniel**, (2021): '*What matters to children living in kinship care: "another way of being a normal family"*'. Doctoral thesis (PhD), University of Sussex.

- **Thomson, Rachel, Østergaard, Jeanette** (2020): 'Open-ended transitions to adulthood: metaphorical thinking for times of stasis', *Sociological Review* ISSN 0038-0261
- Vasilios, Ioakimidis., **Maglajlic, Reima Ana** (2021): '[Post-Pandemic Recovery Requires 'More and Better' Mental Health Services](#)', *The British Journal of Social Work*, Vol. 51, Issue 3, April 2021, pp. 791–793
- Vasilios, Ioakimidis, **Maglajlic, Reima Ana** (2021): '[Time for a Well-Deserved Tribute to Social Work's Research Resilience and a Call for a Long Overdue Debate](#)', *The British Journal of Social Work*, Vol 51, Issue 1, January 2021, pp. 1–2

## Publications: Forthcoming

- **Huegler, Nathalie, Ruch, Gillian:** 'Risk, vulnerability and complexity: transitional safeguarding as a reframing of binary perspectives', *Practice* ISSN 0950-3153
- **Orr, David, M R.:** 'Dementia, care and elder abuse in late twentieth-century detective fiction: Reginald Hill's Exit lines and Michael Dibdin's The dying of the light', *Crime Fiction Studies* ISSN 2517-7982
- **Thomson, Rachel, Berriman, Liam:** 'Starting with the archive: principles for prospective collaborative research', *Qualitative Research*, ISSN 1468-7941



*'The complexity of Social Work and human relationships: Knots understood as difficult situations in people's lives, and the almost invisible networks woven by social work, which allow people to continue to recognise themselves and to be recognised after our interventions in their life processes.'*  
Image submitted by Esther Mercado Garcia, Spain, for World Social Work Day 2021



## **LOCATION**

The Centre for Social Work Innovation and Research (CSWIR) is located within the Department of Social Work and Social Care in Essex House on the University of Sussex campus. The University is situated on a modern campus on the edge of the South Downs National Park near the lively seaside city of Brighton and Hove. London is one hour away by train, and there is easy access to Gatwick and Heathrow airports.

### **Centre for Social Work Innovation and Research (CSWIR)**

Department of Social Work and Social Care  
School of Education and Social Work  
Essex House  
University of Sussex  
Falmer, Brighton  
BN1 9QQ

## **CONTACT**

CSWIR Director  
Professor Gillian Ruch  
E [g.ruch@sussex.ac.uk](mailto:g.ruch@sussex.ac.uk)

CSWIR Deputy Director  
Dr Henglien Lisa Chen  
E [h.l.chen@sussex.ac.uk](mailto:h.l.chen@sussex.ac.uk)

CSWIR Research Assistant  
Avanka Fernando [af436@sussex.ac.uk](mailto:af436@sussex.ac.uk)

E [cswir@sussex.ac.uk](mailto:cswir@sussex.ac.uk)  
[www.sussex.ac.uk/socialwork/cswir](http://www.sussex.ac.uk/socialwork/cswir)  
Follow us on Twitter: @SussexCSWIR