

Examination Board Reports: Summer 2005

ALL THE REPORTS DESCRIBED IN THIS DOCUMENT WILL WORK UNTIL THE 1ST AUGUST EACH YEAR. ON THIS DATE THE STUDENTS ARE MOVED TO THE NEXT YEAR OF THEIR PROGRAMMES OF STUDY.

Author: Colin Clark
3RD June 2005, amended 4th July 2005

Contents

1.0 How to obtain the reports	p1
2.0 Marks Assurance Reports	3
2.1 Departmental Mark Boxplot	3
2.2 Departmental Marks Analysis	4
2.3 Departmental Marks Detail	5
2.4 Sub Assessment Marks	10
2.5 Coursework Marks	12
2.6 Exam Question Marks	14
3.0 Classification/Progress Examination Board Reports	16
3.1 Final Year Marks Array	16
3.2 1st & 2nd Year Marks Array	19
3.3 Foundation Year Marks Array	21
3.4 All Marks for Candidate(s)	22
4.0 Appendix – Circumstance Codes and Attempt Type Codes	24

1.0 How to obtain the reports

The **Departmental Marks Boxplot** is run in excel using data exported from the exams system. The nature of the export and generation of the chart is such that this report is run by Colin Clark in Student Systems and distributed to the examination boards. All the rest of the Examination Board reports are Web Reports.

The Web Reports system can be accessed from the following web page by clicking on the [web reports](#) link

<http://www.sussex.ac.uk/Units/administration/database-logon.shtml>

Enter your Web Reports username and password then at the next screen select the User Class "***** FORMAL MARKS" (where ***** is your school or department name). If you have problems logging in please contact IT Services: BIS on x8800. Access to these reports has been given to all Chairs and Deputy chairs of Examination Boards and to administrative staff nominated by School Curriculum Administrators.

Click on the folder called **UG Marks Assurance** to access **Departmental Marks Analysis, Departmental Marks Detail, Sub Assessment Marks, Coursework Marks** and **Exam Question Marks**.

Or - Click on the folder called **UG Exam Boards** to access the marks arrays and the **All Marks for Candidate(s)** report.

Most of the following instructions apply to each of these folders, but the example will follow the actions to run the Departmental Marks Analysis reports.

Click on the folder called **UG Marks Assurance**.

You will see six reports listed (and a folder containing old reports) .

Click on the title of the **Departmental Marks Analysis** report to run it.

Integrated Exams System – Examination Board Reports Summer 2004

Select your School from the drop down list (normally you will only see the School to which you belong in the list)
Click Next

Select your Department (or the Department that you wish to run the report for if you are a school administrator) from the drop down list

Select the Year of Programme. This tells the report to include courses that have candidates from, for example, the final year. Courses are selected this way so that marks assurance can be performed on all courses taken by, for example, finalists rather than just courses at level 3.

Click Next

The next screen contains a prompt to select courses. You should normally select all the courses in the list by holding down shift and scrolling to the bottom of the list and clicking on the title of the last course. This action should highlight all the courses in the list. If necessary a partial selection can be made form the list of courses. This will be necessary when running reports for Exam Boards that deal with a subset of a courses owned by a department.

Select the relevant examination board meeting from the list.

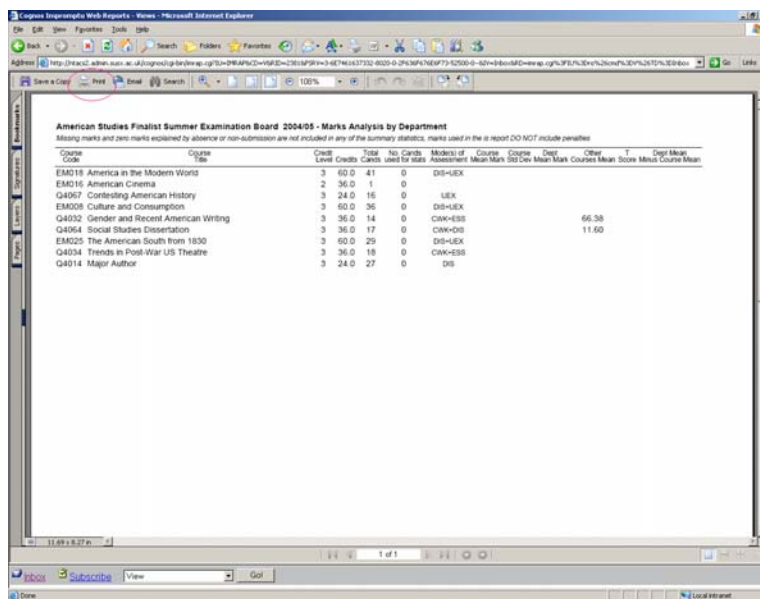
Click Finish

You will see a message indicating that the report is Queued for running. Click on the Inbox link. The freshly run **Departmental Marks Analysis** report will be shown in bold. If it is not visible or its text is not bold click on refresh (in the browser toolbar, or click on the Inbox link) sporadically until the report appears with bold text. These reports will take up to several minutes to arrive in your web reports inbox

Click on the title of the report to view it

Possible error message – you may see a message along the lines of “Error Reading Linearized Hint Data” – if you see this click on ok, then use your browsers back button to return to the list of reports. Launch Adobe Reader, choose Preferences from the Edit menu, choose Internet (in Adobe reader version 6) or Options (in Adobe Reader version 5) from the list on the right then un-tick the box next to “Allow fast web view”. Click OK then go back.

To print the report use the print button circled in the screen print below. The printer icon in the browser toolbar and drop-down menu will not work.



Course Code	Course Title	Credit Level	Credits	Total Cards	No. Cards used for sites	Modes of Assessment	Course Mean	Course SD	Dept. Mean	Dept. SD	Other Courses Mean	Other Courses SD	Dept. Mean
EM016	America in the Modern World	3	60	41	0	DS=LEX							
EM016	American Cinema	2	36	1	0								
Q4067	Contesting American History	3	24	16	0	LEX							
EM026	Culture and Consumption	3	60	36	0	DS=LEX					66.38		
Q4032	Gender and Recent American Writing	3	36	14	0	CMW=DS							
Q4064	Social Studies Dissertation	3	36	17	0	CMW=DS					11.60		
EM025	The American South from 1830	3	60	29	0	DS=LEX							
Q4034	Trends in Post-War US Theatre	3	36	18	0	CMW=DS							
Q4014	Major Author	3	24	27	0	DS							

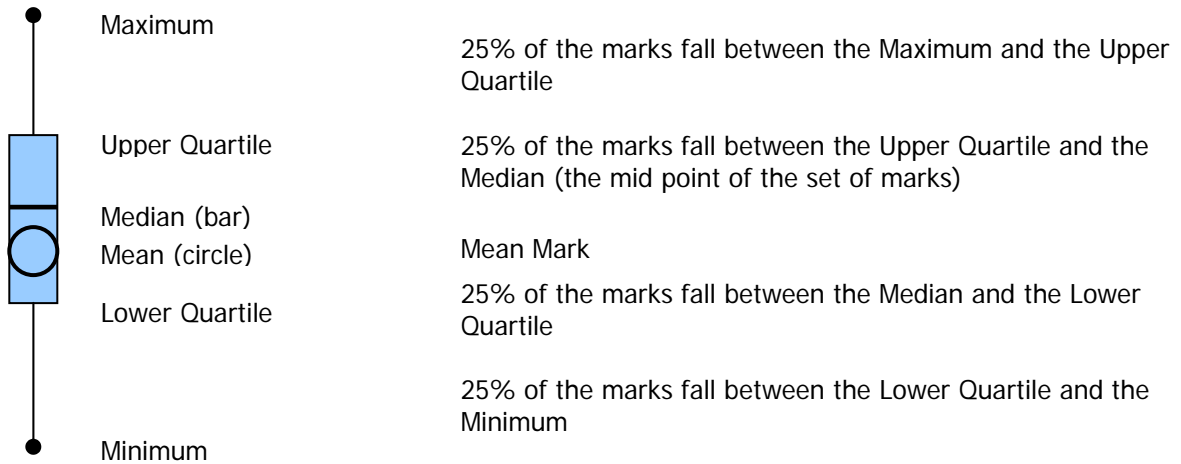
2.0 Marks Assurance Reports

2.1 Departmental Mark Boxplot

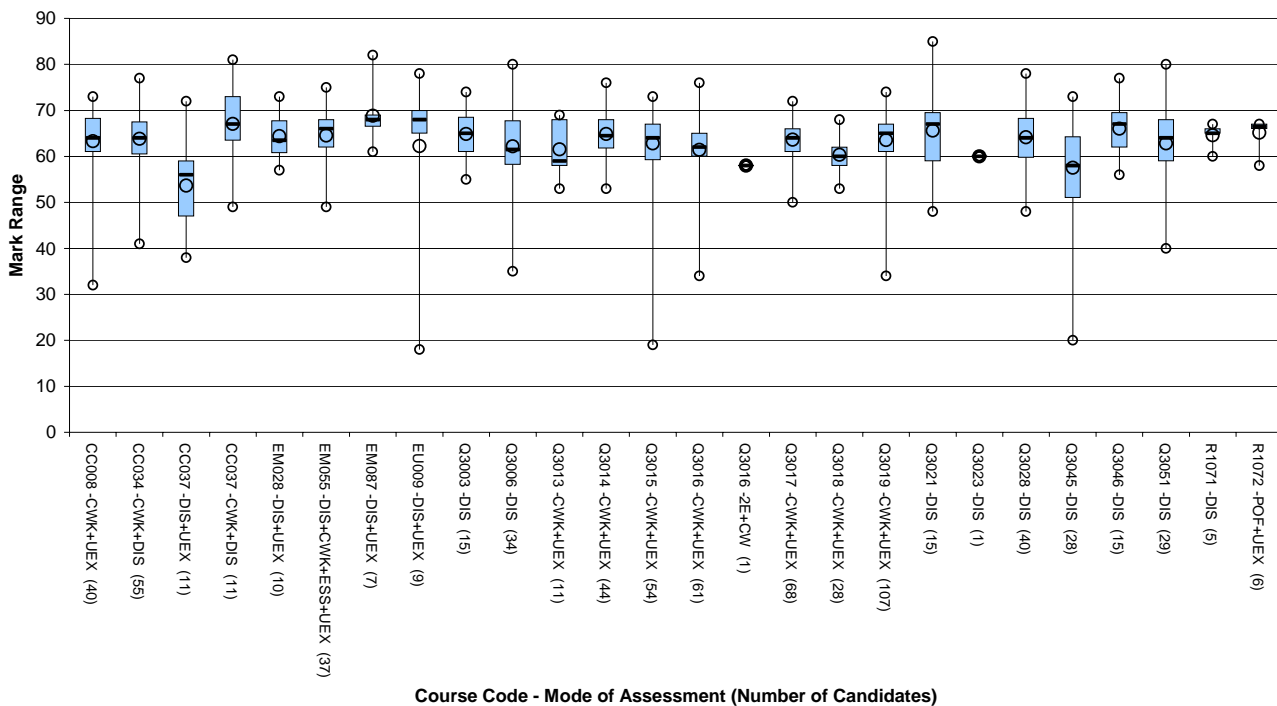
Access: This report will be produced and distributed by Colin Clark

Content:

The boxplot gives a visual representation of the variation in distribution of marks across a range of courses.



English course comparison boxplot: 2002/3 Courses with finalists



The number of candidates on a course on this diagram is important as it may explain a narrow distribution of marks e.g. R1071 in the example above. Candidates who have a zero mark explained by absence or non-submission are excluded from this report

2.2 Departmental Marks Analysis

Access: Web Reports

User Class ***** FORMAL MARKS; (where ***** is your school or department)
 Folder UG Marks Assurance
 Report Departmental Marks Analysis

Content:

The Departmental Marks Analysis report lists all the courses for a department taken by students from the selected year of study in attendance. The report shows key statistics that can be used to ascertain how the student performance on a course compares with student performance on comparable courses.

Details of the fields on the report are in the table below

Course Code: Title	Course Code and title.
Credit Level	Credit level of the course.
Credits	Number of credits awarded if the course is passed.
Total Cands	The number of candidates who completed the course.
No. Cands used for stats	The number of candidates included in the summary statistics contained in this report. This may vary from the total number of candidates as candidates with a zero mark explained by absence or non submission are not included in the summary statistics.
Mode(s) of Assessment	The assessment modes used for the course.
Course Mean mark	The average mark for the course for the current academic year (this figure does not include the effect of any penalties for late submission).
Course Std Dev	The standard deviation of marks for the course for the current academic year (this figure does not include the effect of any penalties for late submission).
Dept Mean Mark	The mean of the current year marks for all the courses listed on the report (this figure does not include the effect of any penalties for late submission).
Other Courses Mean	The overall mean of the mean mark for all the students on this course on the other courses that they have taken this year (this figure does not include the effect of any penalties for late submission).
T score	This is a measure of how the mean marks for this course compare with the mean marks for the same students on the other courses that they have taken this year. Scores greater than +/- 4 are highlighted on the report. T score is calculated thus: $(Course\ Mean\ mark - Other\ Courses\ Mean) / Course\ Std\ Dev * \sqrt{No.\ Cands\ used\ for\ stats}$
Dept Mean Minus Course Mean	The mean of the current year marks for all the courses on the report minus the average mark for the course for the current year. This field is highlighted if its value is greater than 10% of the Dept Mean Mark and there are more than 10 candidates included in the statistics for the course.

2.3 Departmental Marks Detail

Access: Web Reports

User Class ***** FORMAL MARKS; (where ***** is your school or department)
 Folder UG Marks Assurance
 Reports Marks Detail

Prompts

- Select School
- Select Department
- Select Year of Programme
- Select Course(s)
- Include V&Es in distribution calculations
- Exclude marks equal to or less than - can be used to exclude low or zero marks that skew the marks distribution Examination Board

Content:

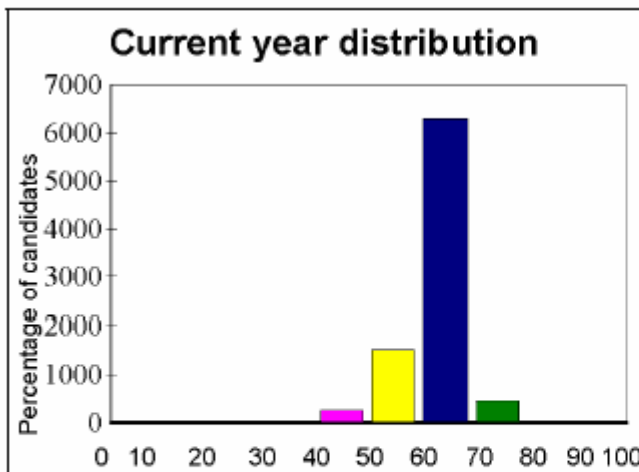
The departmental Marks Detail report has three panes. Two of the panes contain summary statistics and a marks distribution histogram – one of these panes is for the current year and the other is for up to three years of historical data. The third pane contains an anonymous list of candidates and their marks.

The report is grouped by course. Marks from special modes of assessment are excluded from the summary statistics but are included in the list of candidates and their marks.

Current Year Distribution

Normal Mode(s) Summary

210 candidates included in summary stats
 V&Es INCLUDED in summary stats
 Marks >-1% used in summary stats



>=70%	960	457.1%
60-69%	13212	6291.4
50-59%	3174	1511.4
40-49%	516	245.7%
30-39%	72	34.3%
<30%	0	0%

Sub Assessment Summary

Mode Weight Mean StdDev

Marks summary		This course	Others
Min:	34.00	Mean:	61.76 61.21
Max:	74.00	Std Dev:	5.47 12.28
T Score:	1.47		

The **current year distribution** pane contains the following information:

A guide to the marks that have been included in the summary is shown at the top right. When the report is run the prompts allow you to decide whether or not to include Visiting and Exchange students in the report and to set a threshold below which marks are not included in the summary statistics. This defaults to -1, to include candidates who has scored zero and this zero mark is not explained by absence or non-submission. Zero marks that are explained by absence or non-submission are always excluded from the summary statistics.

The **Current year distribution** histogram shows the percentage of candidates whose mark falls into bands that are 10% wide.

The box to the right of the histogram shows the numbers of student and percentage of students whose marks lie in the ranges shown

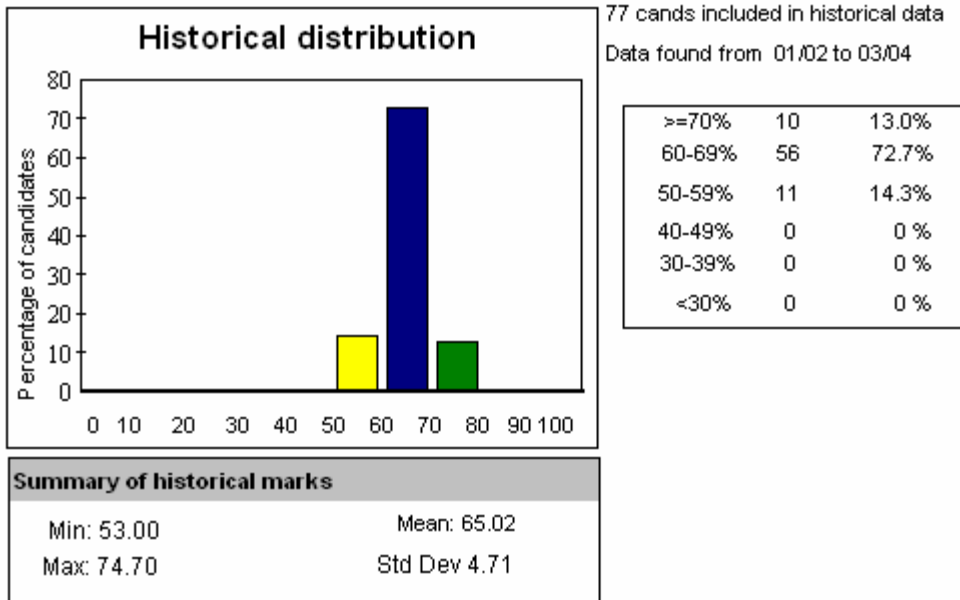
The **Marks Summary** below the histogram shows:

Min	The lowest mark for the normal assessment mode for this course in the current academic year.
Max	The highest mark for the normal assessment mode for this course in the current academic year.
Mean (This course)	The average mark for the normal assessment mode for this course in the current academic year.
Mean (Others)	The overall average of the average marks of all the students on this course (on the normal assessment mode) for the other courses that they have taken (on the normal assessment mode) in the current academic year
Std Dev (This course)	The standard deviation of marks for the normal assessment mode for this course in the current academic year.
Std Dev (Others)	The standard deviation of marks for students on this course (on the normal assessment mode) for all the other courses (where they have taken the normal assessment mode) that they have taken in the current academic year.
T score	This is a measure of how the average marks for this course (normal assessment mode only) compare with the average marks for the same students on the other courses (normal assessment mode only) that they have taken this year. Scores greater than +/- 4 are highlighted on the report. T score is calculated thus: $(\text{Mean mark(This Course)} - \text{Mean(Others)}) / \text{Std Dev (This course)} * \sqrt{\text{No Cands included in summary stats}}$

The **Sub Assessment Summary** at the bottom right of the pane shows the following for each sub assessment on the course. If there is only one mode of assessment then these fields are not populated:

Mode	The sub assessment mode of assessment.
Weight	The weighting of the sub assessment towards the overall mark for the course.
Mean	The mean of the marks for the sub assessment.
StdDev	The standard deviation in the marks for the sub assessment.

Historical Distribution



The report includes up to a maximum of three years worth of historical data depending upon the data that exists for each course. The range of years that have been selected for the historical summary is shown in the selection summary at the top right of the pane.

The rest of this pane is the same as the Current year distribution pane except the sub assessment summary and mean/std dev/T Score for other courses taken by students are not present.

Candidate List

The candidate list is grouped by assessment type (Normal, Special, V&E and Resit).

The candidates are listed in rank order.

Year	Cand	Attempt type	Mark	Avg for other courses	Circs.	Circs. Detail	Ev	Alrt	Programme
219 candidates were entered for assessment in 2004/05									
Examiner 1: Surprenant, Celine					Examiner 2: Thomas, Sophie HL				
NORMAL mode of assessment: UEX									
2	02046	IA	74.00	(68.00)			N	English	
2	04367	IA	72.00	(72.44)			N	English	
2	80011	IA	71.00	(59.43)			N	English	
2	07448	IA	71.00	(70.87)			N	English & Stud Film&EurLit	
2	04011	IA	71.00				N	English Lang & Lit	
2	04092	IA	71.00	(69.00)			N	English	
2	04475	IA	70.00				N	English Lang & Lit	
2	03903	IA	70.00	(47.00)			N	English & Cultural Stud	
2	84031	IA	70.00	(72.00)			N	Philosophy & English	
2	84037	IA	70.00	(68.00)			N	American Studies & English	
2	84070	IA	70.00	(72.00)			N	English	
2	02090	IA	69.00	(64.33)			N	English & Cultural Stud	
2	07097	IA	69.00				N	English	
2	04023	IA	69.00	(70.40)			N	English	
2	84086	IA	69.00	(72.38)			N	English & Modern Lang (F)	
2	84010	IA	69.00	(64.70)			N	English	
2	84020	IA	68.00	(64.00)			N	English	
2	04034	IA	68.00	(65.00)			N	English	
2	03050	IA	68.00	(71.88)			N	English	
2	84080	IA	68.00	(61.75)			N	English	
2	04001	IA	68.00	(67.50)			N	English & Cultural Stud	
2	04002	IA	68.00	(27.28)			N	English & Art History	
2	84035	IA	68.00				N	English	
2	04066	IA	68.00	(76.25)			N	English	
2	07053	IA	67.00	(70.00)			N	Philosophy & English	
2	84072	IA	67.00	(71.00)			N	English	
2	84038	IA	67.00	(65.16)			N	English	
2	04019	IA	67.00	(77.20)			N	English & Film Studies	
2	84009	IA	67.00	(67.50)			N	English & Stud Film&EurLit	
2	04080	IA	67.00				N	English Lang & Lit	
2	04078	IA	67.00				N	English & Int History	
2	04017	IA	67.00	(65.22)			N	English	
2	84019	IA	66.00	(59.00)			E	N English	
2	04007	IA	66.00	(69.00)			N	English	

The fields for each candidate are as follows:

Year	Shows year of programme or V if the student is a V&E student.
Cand	The student's candidate number.

Attempt Type	The kind of attempt (see appendix).
Mark	The student's overall mark for the course (without penalties applied).
Avg for other courses	The student's average mark for all the other courses they have taken this academic year (without penalties applied).
Circumstances/Circ Detail	Shows mitigating circumstance codes (see appendix). Where the circumstances are applicable to a particular sub assessment they are preceded by the sub assessment mode e.g. UEX: AB denotes absent from unseen exam.
Ev	If mitigating evidence has been submitted to the Mitigating Evidence Committee this field will contain an 'E' unless the MEC has rejected the evidence in which case it will show 'R'.
Alrt	If the field contains a 'Y' this indicates there is a problem with the mark e.g. overall course mark not calculated due to missing sub assessment mark.
Programme	Shows the degree programme that the student belongs to.

2.4 Sub Assessment Marks

Access: Web Reports

User Class ***** FORMAL MARKS; (where ***** is your school or department)
 Folder UG Marks Assurance
 Report Sub Assessment Marks Report

Prompts

Select School
 Select Department
 Select Credit Level
 Select Academic year for course
 Select Course(s)
 Select academic year for marks

Content:

This is a crosstab report with a list of candidates and the overall course mark, with crosstab columns showing the marks and details for each sub assessment that contributes to the course overall mark.

Sub Assessment Marks Report

R0015: Aspects and Icons II and III (I) 2004/05

Level: 2 Credits: Marks shown in this report DO NOT have penalties deducted

Cand No	Programme	Attempt	Overall Course Mark	Penalty Points	Circ.	Mode type: NORMAL	
						PRO	TAP
						Weight: 70	Weight: 30
						SUMMER	SUMMER
						Week 5	Week 1
						Thu	Mon
						Mark Penalty Circ. Circ. Detail	Mark Penalty Circ. Circ. Detail
84:11	International Rel	IA					
84:12	Art History & Modern Lang (I)	IA					
84:13	Modern Languages (I/S)	IA					
84:14	Modern Languages (I/S)	IA					
84:16	History & Modern Lang (I)	IA					
84:18	Art History & Modern Lang (I)	IA					
84:30	Drama Studies & Mod Lang (I)	IA					
						0	NS

The fields in the list are

Cand No	Candidate number
Programme	The candidates programme of study
Attempt	The attempt type – see appendix
Overall Course Mark	Overall course mark without penalties applied
Penalty Points	Total amount of penalty for candidate/course
Circumstance	Absence, Lateness, Non Submission etc. – see appendix

The fields in the crosstab columns are

Mode Type	Normal, Resit, Special or V&E
Assessment Mode	The mode of assessment for this sub assessment

Integrated Exams System – Examination Board Reports Summer 2004

Weight	The weight that this sub assessment contributes to the overall course mark
Term	Term assessment taken/due in
Week	Week assessment taken/due in
Day	Day assessment taken/due in

The fields in the detail columns are

Mark	Mark for sub assessment without penalties applied
Penalty	Penalty incurred for this sub assessment
Circ.	Absence, Lateness, Non Submission etc. for sub assessment
Circ. Detail	If sub assessment mode is coursework this contains details of circumstances for the coursework assessments

2.5 Coursework Marks

Access: Web Reports

User Class ***** FORMAL MARKS; (where ***** is your school or department)
 Folder UG Marks Assurance
 Report Coursework Marks Report

Prompts

Select School
 Select Department
 Select Credit Level
 Select Academic year for course
 Select Course(s)
 Select academic year for marks

Content:

This is a crosstab report with a list of candidates and the conflated coursework mark, with crosstab columns showing the marks and details for each coursework assessment.

Coursework Marks Report

Printed Date: 01/Jun/21

F1082: Organic Reaction Mechanisms AUT04/05

Level: 2 Credits: 12.00 Conflation Rule: Marks shown in this report DO NOT have penalties deducted

Cand No	Programme	Conflated CWK Mark	CWK Penalty	103		105		107		109		
				PRB	PRB	PRB	LAB	PRB				
				Wt:5	Wt:5	Wt:5	Wt:40	Wt:5				
				Max:100	Max:100	Max:100	Max:100	Max:100	Max:100			
				Autumn	Autumn	Autumn	Autumn	Autumn	Autumn			
				Wk: 3	Wk: 5	Wk: 7	Wk: 9	Wk: 9				
				Monday	Monday	Monday	Friday	Monday				
				Mark	Penalty	Circ	Mark	Penalty	Circ	Mark	Penalty	Circ
29.51	Chemistry BSc	51.60	0	56.00	74.00	65.00	86.00	0	69.00			
31.18	Chemistry BSc	60.65	0	63.00	74.00	68.00	80.00	0	72.00			
41.61	Chemistry MChem	55.15	0	43.00	64.00	74.00	60.00	0	66.00			
41.61	Chemistry MChem	57.35	0	66.00	72.00	82.00	55.00	0	63.00			
51.17	Chemistry (Sandwich) BSc	59.95	0	74.00	62.00	88.00	87.00	0	63.00			
63.98	Chemistry MChem	69.10	0	77.00	86.00	85.00	70.00	0	94.00			
63.99	Chemistry BSc	83.40	0	91.00	90.00	94.00	87.00	0	81.00			
63.10	Chemistry MChem	53.80	0	94.00	82.00	100.00	57.00	0	0			
63.20	Chemistry MChem	82.00	0	73.00	76.00	91.00	91.00	0	88.00			
63.10	Chemistry MChem	90.25	0	90.00	92.00	97.00	92.00	0	94.00			
63.10	Chemistry MChem	59.90	0	100.00	68.00	94.00	69.00	0	88.00			
63.10	Chemistry w German BSc	77.85	0	96.00	84.00	97.00	96.00	0	88.00			
63.10	Chemistry (Sandwich) BSc	70.80	0	66.00	88.00	97.00	90.00	0	69.00			
63.10	Chemistry MChem	89.55	0	98.00	96.00	100.00	90.00	0	81.00			
63.11	Chemistry MChem	86.10	0	86.00	90.00	100.00	92.00	0	94.00			
63.11	Chemistry MChem	70.25	0	94.00	90.00	100.00	77.00	0	81.00			
63.12	Chemistry MChem	82.95	0	83.00	90.00	82.00	92.00	0	84.00			
63.11	Chemistry MChem	67.00	0	87.00	84.00	97.00	82.00	0	72.00			
63.11	Chemistry (Sandwich) BSc	70.85	0	88.00	72.00	88.00	89.00	0	81.00			
63.11	Chemistry BSc	82.95	0	94.00	92.00	94.00	98.00	0	91.00			

The fields in the list are

Cand No	Candidate number.
Programme	The candidates programme of study.
Conflated CWK Mark	The conflated coursework mark without penalties applied.
CWK Penalty	Total amount of penalty for the coursework sub assessment (i.e. conflated coursework penalty).

The fields in the crosstab columns are

Number	Used to sort the columns – please ignore.
Assessment Mode	The mode of assessment for each coursework assessment.
Weight	The weight that each coursework assessment contributes to the conflated coursework mark.
Max	The maximum achievable mark for each coursework assessment.
Term	Term assessment taken/due in.
Week	Week assessment taken/due in.
Day	Day assessment taken/due in.

The fields in the detail columns are

Mark	Mark for each coursework assessment without penalties applied.
Penalty	Penalty incurred for each coursework assessment.
Circ.	Absence, Lateness, Non Submission etc. for each coursework assessment.

2.6 Exam Question Marks

Access: Web Reports

User Class ***** FORMAL MARKS; (where ***** is your school or department)
 Folder UG Marks Assurance
 Report Exam Question Marks Report

Prompts

- Select School
- Select Department
- Select Credit Level
- Select Academic year for course
- Select Course(s)
- Select academic year for marks

Content:

This is a crosstab report with a list of candidates and the total exam mark, with crosstab columns showing the mark for each question.

Exam Question Marks Report

H1007: Cybernetics and Neural Network AUT04/05

Level: 3 Credits: 12.00 Number of marks for paper: 60.00

Cand No	Programme	Total Exam Mark	1
			Q1
			60.00
			Mark Exc
38:75	Robotics Cybrn & Proc AutoMENG	43.33	26.00
34:77	Robotics Cybrn & Proc AutoMENG	51.67	31.00
41:72	Electronic Eng & Comp Sci Jt	53.33	32.00
36:86	Electronic Eng & Comp Sci Jt	58.33	35.00
36:89	Robotics Cybrn & Proc AutoBENG	68.33	41.00
38:83	Robotics Cybrn & Proc AutoMENG	70.00	42.00
41:89	Computer Systems Eng BEng	73.33	44.00
36:89	Robotics Cybrn & Proc AutoBENG	83.33	50.00
41:84	Robotics Cybrn & Proc AutoBENG	86.67	52.00
41:81	Robotics Cybrn & Proc AutoBENG	95.00	57.00
41:74	Robotics Cybrn & Proc AutoMENG	100.00	60.00

The fields in the list are

Cand No	Candidate number.
Programme	The candidates programme of study.
Total Exam Mark	The total mark each candidate achieved for the paper.

The fields in the crosstab columns are

Number	Used to sort the columns – please ignore.
--------	---

Question number	The number given to each question.
Number of marks for Question	The maximum achievable mark for each question.

The fields in the detail columns are

Mark	Mark for each question.
Exc	Populated if mark has been excluded from total mark (used when a candidate has answered too many questions).

3.0 Classification/Progress Examination Board Reports

3.1 Final Year Marks Array

Access: Web Reports

User Class ***** FORMAL MARKS; (where ***** is your school or department)
Folder UG Exam Boards
Reports Finalist Array, Finalist Array (Portrait), Departmental Alphabetical Rank List,
School Alphabetical Rank List

Prompts:

School

Department

Academic Year

Show candidates names - if set to N then report only shows candidate number against each array

Include foundation year marks

Candidate number - optional, if entered report runs for individual candidate, if % entered report runs for all candidates

Content:

Candidates marks arrays are shown two-to-a-page, sorted in *rank* order. The rank ordering is based strictly on candidates' Grand Mean mark, which occasionally throws up oddities in the borderline zones (i.e. a candidate who is not eligible for re-classification under the rules may have a higher Grand Mean mark, and thus be ranked higher, than other borderline candidates who *are* reclassified into the higher class).

You may need to use the versions of the arrays in portrait layout to print arrays for candidates that run off the bottom of the page in the reports.

Separate alphabetical listings of candidates and ranks are available in the Departmental Alphabetical Rank List, School Alphabetical Rank List – one of these reports should be used to return classification information to the Undergraduate Office.

University of Sussex - BA LLB/BSc Final Year Examinations: Summer Term Psychology Examination Board

Typ	Yr	Course Code	Assmt Mode(s)	Title	Attmpt	Net Mark	Pen Pts	Re Mk	Fail	Wght	Circ	Ev Id	Al	Typ	Yr	Course Code	Assmt Mode(s)	Title	Attmpt	Net Mark	Pen Pts	Re Mk	Fail	Wght	Circ	Ev Id	Al
Psychology BA														Candidate No: 39635													
M	0203	C8037	CWI+UEX	Approaches to Psychology	IA	62.00				0				M	0203	C8037	CWI+UEX	Approaches to Psychology	IA	66.00				0			
		C8511	a CWI+UEX	Research Methods in Psychology I	IA	59.00				0						C8511	a CWI+UEX	Research Methods in Psychology I	IA	64.00				0			
	0304	C8004	a U	Psychobiology	IA	52.00				4.00					0304	C8004	a U	Psychobiology	IA	63.00				4.00			
		C8034	a U	Personality and Individual Differences	IA	58.00				4.00						C8033	a E	Independent Study	IA	62.00				2.00			
		C8035	a U	Social Psychology	IA	61.00				4.00						C8034	a U	Personality and Individual Differences	IA	61.00				4.00			
		C8067	b CWI+OP	Research Methods in Psychology II	IA	66.50				10.00						C8035	a U	Social Psychology	IA	38.00				4.00			
		C8546	a U	Developmental Psychology	IA	67.00				4.00						C8057	b CWI+OP	Research Methods in Psychology II	IA	63.75				10.00			
		C8550	a U	Language, Thinking and Memory	IA	53.00				4.00						C8507	a UEX	Perception and Attention	IA	43.00				4.00			
	0405	C8012	CWI+ESS	Applied Cognitive Psychology	IA					12.00			Y		0405	C8512	a U	Abnormal and Clinical Psychology	IA	62.00				4.00			
		C8026	CWI+ESS	Health Psychology	IA					12.00			Y			C8546	a U	Developmental Psychology	IA	51.00				4.00			
		C8810	CWK	Psychology and Environmental Issues	IA	52.00	0.00			12.00						C8550	a U	Language, Thinking and Memory	IA	36.00				4.00			
		C8817	CWK	Psychology of Collective Action	IA	59.90	0.00			12.00					0405	C8026	CWI+ESS	Health Psychology	IA					12.00			Y
		C8824	PRO	Empirical Project	IA					12.00			Y			C8027	CWI+ESS	Self and Identity	IA					12.00			Y
S	0203	C6016	CWK	Approaches to Cognitive Science	IA	0			*	0				S	0203	C8506	UEX	Mental Representation	IA					12.00			Y
		C6017	a ESS	Approaches to Cognitive Science	RE	40.00		67.00		0						C8816	CWI+ESS	Qualitative Methods in Psychology	IA					12.00			Y
		C6017	CWK	Information Technology for Cognitive Scientists	IA	0			*	0						C8824	PRO	Empirical Project	IA					12.00			Y
		C6018	a WBP	Information Technology for Cognitive Scientists	RE	40.00		64.00		0						C6016	CWK	Approaches to Cognitive Science	IA					71.00			0
		C6018	CWK	Thinking Skills for Cognitive Scientists	IA	64.00				0						C6017	CWK	Information Technology for Cognitive Scientists	IA					71.00			0
		C6019	CWI+UEX	Cognitive Modelling	IA	47.00				0						C6018	CWK	Thinking Skills for Cognitive Scientists	IA					68.00			0
	0304	C6028	d CWI+U	Philosophy of Psychology	IA	67.85				10.00						C6019	CWI+UEX	Cognitive Modelling	IA					62.00			0
Total Weight: 100.00														Total Weight: 100.00													

The columns of the **central section** of the array should be read as follows:

Type	M = Major, S = School, Y = Year Abroad, O = Other
Yr	Year in which the course was taken (note, year abroad assessments are sometimes recorded in the year the student <i>returned</i>).
Course Code	Course code (+suffix). Suffixes denotes a particular credit and/or assessment mode and/or assessment weight <i>variant</i> of the course.
Assmt Mode(s)	See http://www.sussex.ac.uk/Units/academic/academicoffice/modesofassess.pdf for definitions. Note - new format codes are only used for 2001/2 units onwards.
Title	Course title.
Attmpt	Attempt Type – see appendix.
Net Mark	The candidate's mark for the course, <i>net</i> of any penalty points or change made by External Examiner. If the attempt is a resit the mark is capped at the bare pass mark for the course.
Pen Pts	Shows total value of any penalties included in the net mark.
Re Mk	The actual mark achieved at resit.
Fail	Shows as (*) where mark is less than the pass mark for the course, <i>except</i> where there is a case of condoned absence/non-submission or the mark for the course has been set aside.
Wght	The assessment weight contributed by the course towards the overall degree classification, expressed as a percentage.
Circ	Circumstance - see appendix. Where assessment sub assessments exist the element that the circumstance relates to is

	indicated.
Evid	Shows as 'E' if mitigating evidence has been presented, shows 'R' if MEC has rejected the evidence.
Alert	Contains 'Y' if there is no mark and no explanatory Circumstance. Contains 'M' if the mark is subject to a pending misconduct decision. Contains 'MD' if a misconduct decision has been taken for the mark.

The **bottom block** of each candidate's array contains (not shown in screen print above):

Weighted Means	Weighted Mean marks for Major, School and Year Abroad units, plus the overall Grand Mean mark.
Sum of Weights	Total Weight of courses taken. This should usually be 100% (or 125% for 4-year programmes), except it may be lower in cases where a mark has been set aside.
Predicted Result	As per sections 9.5.4, 9.5.6, 9.5.7, of the <i>Handbook for Undergraduate Examiners and Examination Boards 2005</i> . (Note - Borderline candidates on programmes listed in section 9.5.7, where the rules for reclassification are non-standard, will have no Predicted Result, Psychology BSc candidates will have no Predicted Result).

Integrated Exams System – Examination Board Reports Summer 2004

3.2 1st & 2nd Year Marks Array

Access: Web Reports

User Class ***** FORMAL MARKS; (where ***** is your school or department)
 Folder UG Exam Boards
 Reports 1st and 2nd Year Array, 1st and 2nd Year Array - Portrait

Prompts:

- School
- Department
- Academic Year
- Show candidates names - if set to N then report only shows candidate number against each array
- Select year of programme
- Include foundation year marks
- Candidate Number - optional, if entered report runs for that candidate, if '%' entered then report runs for all candidates

University of Sussex - Second Year Undergraduate Examinations: Physics and Astronomy Examination Board (Summer)

Yr	Course Code	Course Title	Assmt Modes	Att	Net Mark	Pen	Re Mark	Fa il	Res its?	Circum-stance	Cre dit
DRAFT ARRAY, do NOT use for Exam Board, print revised version after 4pm 12th July											
Physics MPhys F3028U											
03/04	F3049	Gases and Liquids	CWK+ UEX	IA	78.84						6.0
	F3066	Oscillations and Waves	CWK+ UEX	IA	62.72						6.0
	F3073	Electromagnetism	CWK+ UEX	IA	79.60						12.0
	F3080	Physics Year 1 Laboratory (all year)	CWK	IA	64.33						18.0
	F3123	Introduction to Classical Physics	CWK	IA	71.10						6.0
	F3124	Systems of Particles	CWK+ UEX	IA	89.54						6.0
	F3126	Further and Vector Calculus	UEX	IA	94.00						12.0
	F3144	Planetary Physics	CWK+ UEX	IA	92.15						6.0
	F3156	Introduction to Astrophysics	CWK	IA	68.00						12.0
	F3157	Practical Astronomy	CWK	IA	75.00						12.0
	G1103	Mathematics for Physics I	CWK	IA	68.00					CWK:NS	12.0
	G1173	Introduction to Computer Programming (Matlab)	CWK	IA	78.00						12.0
04/05	F3014	Physical Optics	CWK+ UEX	IA	78.04			P			6.0
	F3026	Quantum Mechanics	CWK+ UEX	IA	87.25			P			12.0
	F3027	Relativity	CWK+ UEX	IA				-			6.0
	F3043	Atomic Physics I	CWK+ UEX	IA	97.50			P			6.0
	F3044	Atomic Physics II	CWK	IA	85.80			P			6.0
	F3052	Interstellar Medium	CWK	IA	82.50			P			6.0
	F3084	Physics Laboratory	CWK	IA	71.42			P			6.0
	F3087	Practical Electronics	CWK	IA	71.09			P			6.0
	F3089	Thermal and Statistical Physics	CWK+ UEX	IA	86.53			P		CWK:NS	12.0
	F3091	Introduction to Programming Paradigms	CWK	IA	89.50			P			6.0
	F3093	Electromagnetism II	CWK+ UEX	IA	86.09			P			12.0
	F3135	Introduction to Modern Physics	CWK	IA	71.84			P			6.0
	F3136	Mathematics for Physics II	CWK+ UEX	IA	82.41			P			12.0
	F3145	Stars and Galaxies	CWK+ UEX	IA	88.75			P			12.0
	F3156	Astronomical Techniques	CWK	IA	88.85			P			12.0
	Y0003	Twentieth Century Music and Culture	CWK	IA	67.80			P			6.0
	Y0017	The Art of Science Writing	CWK	IA	64.00			P			12.0
Current Yr Cr: 144.0		Total Credit Achieved 2004/05 : 138.0				All Cr: 264.0					
Cr Passed: 138.0		Result: Progress				Cr Wgtd Mean: 78.47					
Cr COR: 0.0						Mand Cr Wgtd Mean: 77.35					

Yr	Course Code	Course Title	Assmt Modes	Att	Net Mark	Pen	Re Mark	Fa il	Res its?	Circum-stance	Cre dit
DRAFT ARRAY, do NOT use for Exam Board, print revised version after 4pm 12th July											
Theoretical Physics M F3044U											
03/04	F3049	Gases and Liquids	CWK+ UEX	IA	72.97					CWK:NS	6.0
	F3058	Oscillations and Waves	CWK+ UEX	IA	64.99						6.0
	F3073	Electromagnetism	CWK+ UEX	IA	86.90						12.0
	F3101	Theoretical Physics I	CWK+ UEX	IA	78.49						6.0
	F3123	Introduction to Classical Physics	CWK	IA	77.26						6.0
	F3124	Systems of Particles	CWK+ UEX	IA	81.32						6.0
	F3126	Further and Vector Calculus	UEX	IA	99.00						12.0
	F3156	Introduction to Astrophysics	CWK	IA	75.80						12.0
	G1103	Mathematics for Physics I	CWK	IA	91.00						12.0
	G1167	Linear Algebra & Geometry I	CWK+ UEX	IA	98.10						12.0
	G1168	Linear Algebra & Geometry II	CWK+ UEX	IA	86.40						18.0
	G1173	Introduction to Computer Programming (Matlab)	CWK	IA	93.00						12.0
04/05	F3014	Physical Optics	CWK+ UEX	IA	89.82					P	6.0
	F3026	Quantum Mechanics	CWK+ UEX	IA	97.75					P	12.0
	F3027	Relativity	CWK+ UEX	IA				-			6.0
	F3043	Atomic Physics I	CWK+ UEX	IA	96.75					P	6.0
	F3044	Atomic Physics II	CWK	IA	87.80					P	6.0
	F3089	Thermal and Statistical Physics	CWK+ UEX	IA	98.85					P	12.0
	F3091	Introduction to Programming Paradigms	CWK	IA	81.00					P	6.0
	F3093	Electromagnetism II	CWK+ UEX	IA	86.07					P	12.0
	F3102	Theoretical Physics II	CWK+ UEX	IA	96.00					P	12.0
	F3135	Introduction to Modern Physics	CWK	IA	80.79					P	6.0
	F3136	Mathematics for Physics II	CWK+ UEX	IA	98.00					P	12.0
	F3160	Complex Variable for Physics	CWK	IA	87.44					P	12.0
	G1151	Probability and Statistics I	CWK+ UEX	IA				-			12.0
	Y0032	The Italian Experience 1 part 1	CWK	IA	61.90					P	6.0
	Y0036	The Italian Experience 1 part 2	CWK	IA	60.95					P	12.0
Current Yr Cr: 138.0		Total Credit Achieved 2004/05 : 120.0				All Cr: 259.0					
Cr Passed: 120.0		Result: Progress				Cr Wgtd Mean: 76.01					
Cr COR: 0.0						Mand Cr Wgtd Mean: 87.23					

11.69 x 8.27 in | 1 of 18

Content:

Candidates' marks arrays are shown two-to-a-page, sorted by the credit weighted mean for the current academic year. Second year resit candidates are *included* in the arrays.

Integrated Exams System – Examination Board Reports Summer 2004

You may need to use the portrait version of the report if the arrays run off the bottom of the page. This is likely in science subjects where more courses are taken than in arts.

The columns of the **central section** of the array should be read as follows:

Yr	Academic year in which the course was taken.
Course Code	The code used to refer to the course.
Course Title	Course Title – Mandatory courses are highlighted with bold typeface, courses that have been set aside are crossed through .
Assmt Modes	See http://www.sussex.ac.uk/Units/academic/academicoffice/modesof for definitions.
Att	Attempt type – see appendix
Net Mark	The candidate's mark for the course, <i>net</i> of any penalty points or change made by External Examiner.
Pen	Shows total value of any penalties included in the Net Mark.
Re Mark	Shows the actual mark obtained at resit (Net Mark shows mark capped to bare pass mark for resit attempts).
Fail	<p>'P' (pass) if the course has been passed.</p> <p>'F' (fail) where a mark is less than the pass mark for the course, <i>except</i> where there is a case of condoned absence/non-submission or the unit has been set aside.</p> <p>'X' if the overall mark for the course has been set aside due to mitigating evidence.</p> <p>'EX' if the mark has been set aside by the exam board.</p> <p>'-' if the outcome for the course cannot be determined. This is usually due to the operation of rule 7.3.1(b) (Page 41 Handbook for Undergraduate Examiners and Examination Boards) or missing marks.</p> <p>'C' if course is assessed by course report. The exams system does not contain information about the outcome of such courses – the arrays assume that these courses have been passed – see COR credit below.</p> <p>For courses taken prior to the current academic year this column is left blank.</p>
Resits?	Shows the type of September resit (if any) that the candidate should be offered/required to take. See Attempt Type in appendix for definitions.
Circumstance	Circumstances – see appendix. Where sub assessments exist, the element that the circumstance relates to is indicated.
Credit	The credit weighting of the course, which is used to weight the mark obtained in calculating the mean marks for progress.
Ev Mc	<p>Contains 'E' if mitigating evidence has been presented.</p> <p>Contains 'R' if the MEC has rejected mitigating evidence.</p> <p>Contains 'M' if the mark is subject to a pending misconduct decision.</p> <p>Contains 'MD' if a misconduct decision has been taken for the mark.</p>

4. The **bottom block** of each candidate's array contains:

Current Yr Cr	The total amount of credit that the candidate has <i>taken</i> during the current academic year. Credits for courses that have been set aside (including as a result of a MEC decision) are not counted in this total.
Cr Passed	The sum of the credits for courses that the candidate has <i>passed</i> in the current academic year. Does not include credits for courses assessed by course report.
Cr COR	The sum of the credits for courses assessed by course report. The outcomes of such courses are not currently recorded in the exams system. The arrays assume that these

	courses have been passed, but in case they have not been passed the total credit from these courses is shown explicitly on the array. Local records regarding failed course report courses should be available to the Exam Boards.
Total Credit Achieved 2004/05	The sum of Credit Passed and Credit COR in 2004/05.
Predicted Result	Results are predicted as per the rules set out in section 9.2 of the <i>Handbook for Undergraduate Examiners and Examination Boards 2005</i> .
All Cr	Shows the total amount of credit the candidate has <i>taken</i> to date. Credits for courses that have been set aside (including as a result of a MEC decision) are not counted in this total.
Cr Wgtd Mean	The mark for each course is multiplied by the amount of credit for that course to give a credit weighted mark. All the credit weighted marks for the current year for each candidate are summed then this total is divided by Current Yr Credit to give the Credit Weighted Mean.
Mand Cr Wgtd Mean	Same as the Credit Weighted Mean, but just using the marks and credit from mandatory courses.

3.3 Foundation Year Marks Array

TBA

3.4 All marks for candidate

User Class ***** FORMAL MARKS; (where ***** is your school or department)
 Folder UG Exam Boards
 Reports All Marks for Candidate(s)

Prompts:

School
 Department
 Year of programme
 Academic Year
 Show candidate name - if set to N then report only shows candidate number against each set of marks
 Candidate Number - optional, if entered report runs for that candidate, if % entered then report runs for all candidates

Biochemistry: Candidate's marks from all academic years

Printed Date: 03/Jul

NB for courses taught prior to 04/05, if course was taught twice per year rows for marks will be duplicated in this report

Atmpt	Course Net Mark	Course Penalty	Course Circs	Course Evid	Course Miscon	Sub Assmt Mode	Sub Assmt Weight	Sub Assmt Net Mark	Sub Assmt Pen	Sub Assmt Circs	Sub Assmt Circ Det	Sub Assmt Evid	Sub Assmt	CWK Conflation Rule	CWK Mode	CWK Deadline	CWK Mark	CWK Wght	CWK Max Mark	CWK Circs	CWK Evid	
00000 Ugar, Melissa																						
Year 2 Molecular Genetics Biotech (BSC)																		Stu Status: INTERMITTING				
01/02																						
C1025	Physiology and Behaviour of Animals					IA	38.80		NFA	100.00	38.80											N
C1049	Introduction to Molecular Genetics					IA			UEX	70.00												Y
C7011	Research Methods in Biochemistry					IA			UEX	70.00												Y
02/03																						
C1008	Developmental Biology					IA		EX1	UEX	99.00		EX1										Y
C1027	Plant Science and Technology					IA		EX1	UEX	99.00		EX1										Y
C7006	Energy Transducing Systems					IA		EX1	UEX	70.00		EX1										Y
C7008	Research Methods in Molecular Genetics					IA		EX1	UEX	100.00		EX1										Y
C7012	Structural Molecular Biology					IA		EX1	UEX	100.00		EX1										Y
C7014	Introduction to Cell Regulation					IA		EX1	UEX	70.00		EX1										Y
C7017	The Human Genome					IA		EX1	UEX	70.00		EX1										Y
C7020	Clinical Aspects of Biochemistry					IA		EX1	UEX	70.00		EX1										Y
07871 Tracy, Sarah K																						
Year 2 Molecular Genetics Biotech (BSC)																		Stu Status: INTERMITTING				
02/03																						
C1049	Introduction to Molecular Genetics					IA			UEX	70.00												Y
C7011	Research Methods in Biochemistry					IA			UEX	70.00												Y

The fields in this report are described in the table below

Atmpt	Attempt Type (see appendix for explanation of codes).
Course Net Mark	The overall mark for the course net of any penalties.
Course Penalty	The total amount of penalties included in the overall mark for the course.
Course Circs	Circumstances that relate to all the assessments on the course.

Course Evid	If mitigating evidence has been submitted for any of the assessments on the course this will show E. If there is only one mode of assessment and evidence has been rejected by MEC this will show R.
Course Miscon	If there is a misconduct decision pending this will show M, if a misconduct decision has been taken this will show MD.
Sub Assmt Mode	The mode of assessment for each sub assessment on the course.
Sub Assmt Weight	The weight each sub assessment contributes to the overall course mark.
Sub Assmt Net Mark	The mark for each sub assessment net of any penalties for that sub assessment.
Sub Assmt Pen	The amount of penalties for each sub assessment.
Sub Assmt Circs	Circumstances that relate to each sub assessment.
Sub Assmt Circ Det	Circumstances that relate to coursework assessments if the sub assessment mode is CWK.
Sub Assmt Evid	If mitigating evidence has been rejected by MEC this will show R. If mitigating evidence has been submitted and has not been rejected this will show E.
Sub Assmt Alert	If any marks for the sub assessment are missing this will show Y. N means no alert and C means that the mark is the product of a conflation.
CWK Conflation Rule	The rule used to conflate the coursework assessments. E means all coursework assessments are equally weighted, W means the coursework assessments are weighted according to the CWK Weight and a number means the best n marks from the coursework assessments have been used and equally weighted.
CWK Mode	Mode of assessment for each piece of coursework.
CWK Deadline	The deadline for each piece of coursework.
CWK Mark	The net mark for each piece of coursework.
CWK Wght	The weight of each coursework assessment.
CWK Max Mark	The maximum mark possible for each piece of coursework.
CWK Circs	Circumstances that relate to each piece of coursework.
CWK Evid	If mitigating evidence for a piece of coursework has been rejected by MEC this will show R. If mitigating evidence has been submitted and has not been rejected this will show E.

4.0 Appendix - Circumstance Codes and Attempt Type Codes

Circumstance codes in use this year:

AB	Absent
NS	Non-submission
LA	Late submission
VL	24hrs+ late
XAB	Condoned absent
XNS	Condoned non-submission
XLA	Condoned late submission
XVL	Excused 24hrs+ late
EX	Set aside by Exam Board - Classification purposes
EX1	Exam board set aside weight and credit
EX2	Exam board set aside weight

Attempt Types:

IA	Initial Attempt
RE	Mandatory Resit
SI	Mandatory Sit
ORE	Optional Resit
OSI	Optional Sit
PR	Professional Resit
(EX	Set Aside – used for historical data where marks have been set aside and attempt type can no longer be determined)