

Silver  
Jubilee  
1986

The University of Sussex

# BULLETIN

October 28, 1986

Published by the Information Office

## MEMORIAL SERVICE FOR LORD FULTON



A service of thanksgiving for the life of Lord Fulton, the University's first Vice-Chancellor, was held in The Meeting House on October 24.

Former Prime Minister Edward Heath (pictured above) gave a reading from the New Testament and Dr. Ma Lin, Vice-Chancellor of the Chinese University of Hong Kong, read from a lecture delivered by Lord Fulton in 1977. Emeritus Professor David Daiches gave the address.

Lady Fulton and members of the family were present and Sir Denys Wilkinson and other senior officers and members of the University were among the congregation. Among others attending the service were Lord Shawcross (former Chancellor), Sir David Orr (Chairman of the British Council), Mr. P.A. Oakley (representing the Universities' Central Council on Admissions), Mr. D.J. Clinch (Open University), Mr. I.M. Sanderson (Bradford), Sir David and Lady Innes Williams (London) and Archdeacon H.C. Williams (University College, Swansea). Cllr. R.J. Blackwood, Deputy Mayor of Brighton, attended on behalf of the Mayor.

Lord Fulton died on March 14 at the age of 83. He was appointed Vice-Chancellor of Sussex in 1959, two years before the grant of the University's Royal Charter. So rapid was the growth of the new University that by the time of his retirement in 1967 Sussex already had 3,000 students and had firmly established its academic reputation. He was a former Principal of University College, Swansea, and chaired the Commission which established the Chinese University of Hong Kong.

## £339,000 INFORMATION TECHNOLOGY AWARD

Realistic computer-generated moving pictures for such applications as flight simulators and car design will be the goal of new research for which two Sussex electronics engineers have just received a £339,000 grant.

The research into integrated circuit design for high-performance computer graphics systems will be carried out jointly with GEC's Hirst Research Centre at Wembley and Singer Link Miles at Lancing.

The techniques to be developed will result in better and cheaper systems for application in flight training simulators for pilots, industrial graphic design and television animation.

The award to Professor Dick Grimsdale, Professor of Electronic Engineering, and Dr. Paul Lister, Lecturer in Electronics, has been made by the Science and Engineering Research Council under the Alvey Programme. This is a collaborative programme involving industry, government and universities in information technology research.

Dick Grimsdale, Paul Lister and their colleagues, Mark Agate, Helen Finch and Adam Garel in the School of Engineer-

ing and Applied Sciences' Very Large Scale Integration and Computer Graphics Group, will be involved in the development of new forms of computer hardware (architectures) to support the extremely high processing rates required for high performance graphics display systems.

The development of these architectures is made possible through the significantly different, and more powerful, options that VLSI technology provides, over earlier technology.

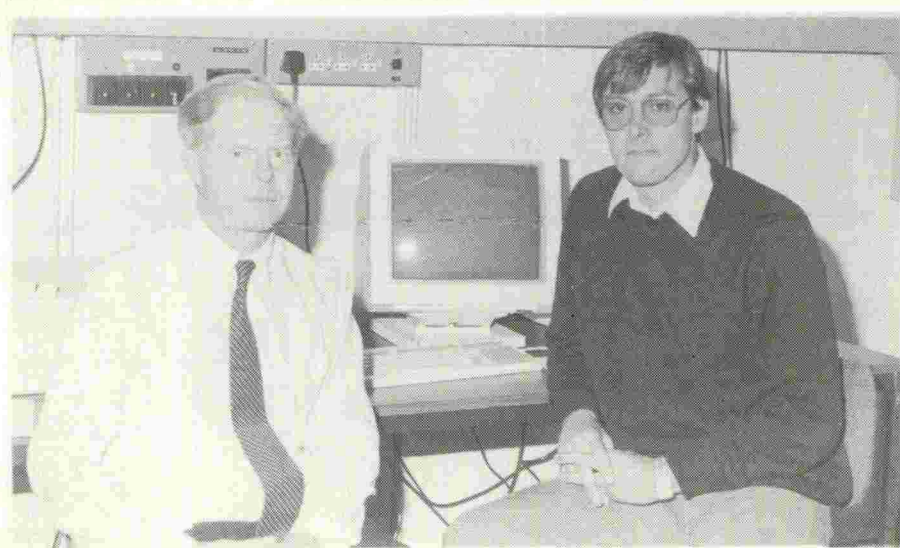
"The successful development of these integrated circuits will lead to high-performance graphics systems which will be better and significantly cheaper than current systems," Dr. Lister commented.

The resulting graphics systems can be used in flight simulation trainers which allow pilots to learn how to fly new aircraft, or deal with emergencies, while on the ground. The integrated circuits will have a wide range of applications in computer-aided design workstations, such as those used to develop new cars, with, for example, increasingly low drag co-efficients, and by architects in the design of buildings.

*Picture, page 2.*



The national Save a Life campaign came to the University on October 23 when an estimated 130 people attended cardiac resuscitation training courses on campus. In the evening heart specialist Dr. Douglas Chamberlain gave an open lecture. The day's activities were held as part of a joint event to mark the Silver Jubilees of both the University and the British Heart Foundation. The latter is currently funding a £32,000 study of in-hospital cardio-pulmonary resuscitation by Linda Bailey (Centre for Medical Research). She is looking at how the number of people who survive heart attacks can be increased. Mrs. Bailey is primarily concerned with improvements in the training of junior hospital doctors, but this work also carries over to the community at large by teaching people how to act if someone suffers a heart attack.



Professor Dick Grimsdale (left) and Dr. Paul Lister (see story on front page)

## FRANCO-BRITISH AWARDS

For the second year running Roderick Kedward, Reader in History in the School of European Studies, has been successful in securing one of the Economic & Social Research Council's new Franco-British Studentships for an incoming history graduate. Only six such awards are available each year.

These special two- to three-year awards stipulate a minimum of a year's research in France administered by the French government's research agency, the CNRS. It is the supervisor who has to apply for the award, providing a detailed submission of working academic connections with French colleagues and research institutions.

The two Sussex holders of the awards, Hanna Diamond and Barbara Conrad, are both former students of the European School, and both have projects in provincial France. Rod Kedward was a British Council visiting academic to Paris and Lille last November, and is known for his work on southern France under the German Occupation.

The Information Office would be pleased to receive details of other such 'linked' awards which are an insufficiently known source of research income to the University.



DIARY  
OF  
EVENTS

November 1: **The Local Economy: present structure and future strategies.** A one-day conference intended to bring together local planners and politicians, academics and researchers, representatives of local businesses and trades unions and members of the public, to hear about the present state of Brighton's economy and to discuss options for the future. Starts 10 a.m. Arts C133. For further details contact Ian Duncan, tel. 2311.

November 16: **Maria Bueno** (3 times Wimbledon Singles Champion) **Tennis Clinic and Exhibition** with Debbie Jarrett (Jevans). Sportcentre 11 a.m. - 1 p.m. Tickets £5 (£3 students) (only 50 places available). Apply Sportcentre Reception.

## MORE HOPE FOR THE ELMS

The University's elms - under threat from deadly Dutch Elm Disease - are fighting back. This year only ten trees have had to be felled, compared with 26 last year. And only eight trees have had to undergo surgery, as against 17 in 1985.

Encouraging, too, is the fact that most of the disease stemmed from last year's infection. This probably occurred in the autumn when the leaves were changing colour, making the disease most difficult to detect, John Warton, Buildings Surveyor, pointed out. "It does show that new infection in 1986 was very low compared with previous years," he told the Bulletin.

The elm trees are an outstanding feature of the University park. Sir Basil Spence described those along the central spine of the site as the main natural feature around which he designed the campus layout.

The University's Estates staff have been waging a long war against Dutch Elm Disease. Various treatments have been tried in attempts to hold back the advance of the disease.

John Warton says he will be following the trials of a new treatment with considerable interest: scientists in the Netherlands claim to have developed a fungicide which will provide both a preventative and a curative treatment.

The University works closely with the local authorities who share its concern over the disease. "We have very close liaison with them in dealing with the problems, and will continue to maintain this to the advantage of us both," John Warton said.

### JEANETTE ALLEN

We are sad to report the tragic and unexpected death of Jeanette Allen, an undergraduate in Experimental Psychology, on October 6. She would have been in the third year of her course.

## NEWS FROM THE COMPUTING CENTRE

Following the publication in the last issue of the Bulletin of a general invitation to members of the University to make use of, among other information systems, the UK joint academic network, JANET, the Computing Centre has asked for the following additional information to be published:

JANET is a 'packet-switched' network operating over privately leased British Telecom lines. It is implemented and managed by the Joint Network Team of the Computer Board for Universities and the Research Councils. The University Computing Centre is responsible for its proper use.

Its main purpose is computer-computer connection for file transfer and for running programs on remote computers more powerful than those at the local site, or providing special software not otherwise available. It is also possible, as indicated in the last issue, to access library catalogues at certain universities.

Any member of faculty or graduate student may be registered by the Computing Centre to have access to JANET. Those wishing to use the network should apply to:

Caroline Leary, Tel: 2954, or 'mail' CCFC4 on the VAX system.

Mrs. Leary maintains and updates regularly a register of all facilities accessible over JANET.

(Undergraduates are not normally allowed access. Any who have special requirements should see the Computing Centre Manager, Mr. Ken Lewis, Room 3C10, Physics Building.)

The Director of Computing wishes to stress that the capacity of the network is strictly limited and that it should be used sparingly and responsibly. At present there is no charge even though there are substantial costs. These are borne in small part by the local Computing Centre and in large part by the Computer Board and the Research Councils.

JANET is still quite new and growth in traffic is certain. When this exceeds the capacity of the system the only way of circumventing breakdown will be to invest substantial additional monies. It is far from certain, however, that any further central funds will become available. It is in the interests of all to prevent such a state of affairs, or at least postpone it for as long as possible, by accessing JANET only for well-judged purposes and in efficiently organised ways.

The Computing Centre is responsible for proper control of access to JANET, and via JANET to corresponding European and North American academic networks. Short introductions to network use are offered in the Centre from time to time. The next one will be on the afternoon of **Wednesday, 5 November.**

Anyone interested in taking part should get in touch with Caroline Leary (see above), who can also give general information and advice by appointment.

## HELPING TO CUT UNEMPLOYMENT

Employment prospects in Sussex will be improved if local firms can be encouraged to grow - and the University is taking practical steps to help them do so with a series of workshops starting next month.

The need for workshops was highlighted in a recent research survey which involved looking into the needs of the small and medium-sized firms which predominate in East and West Sussex. The survey was funded by the Government as part of its PICKUP initiative.

The Director of the PICKUP project "Support for Growth" is Mr. Harry Phillips, who has been seconded to the University from the Legal and General Group for one year. His survey has involved interviewing 33 managing directors from manufacturing industry and the service sector in East and West Sussex.

Mr. Phillips points out that there are 12,000 small and medium-sized firms in the area: "If each firm created one more new job there would be a three per cent increase in the total employed in the two counties. This opportunity is one important justification for considering how the University can assist in the growth of small and medium-sized firms."

The first two workshops which start in November will address some of the major difficulties highlighted in the interviews. 'Interviewing and Selection Skills' recognises that the most expensive mistake made by managers of small firms occurs when they hire the wrong key person. 'Instructor Training' responds to the fact that firms buying new equipment or computer software expect the supplier to provide hands-on instruction.

The University has always had extensive industrial links and it has been in the business of helping local firms for a number of years. Under its 'Services for Industry' programme it makes a wide range of technical and scientific equipment and expertise available to almost 2,000 companies in East and West Sussex and neighbouring counties.

### JEANNE MacKENZIE

We regret to announce the death of Jeanne MacKenzie. The wife of Professor Norman MacKenzie and his collaborator in a number of literary and historical biographies, her latest book, published this summer, was the much-acclaimed *The Children of the Souls*, a study of the 'lost generation' of 1914. She died peacefully at home in Lewes on October 16, after a long illness. There will be a memorial ceremony in the Meeting House at 2.30 p.m. on Friday, October 31, to which all are welcome.

Please note that in connection with the above memorial ceremony, car parking will be restricted on that day; drivers who normally leave their vehicles in the Sussex House car park are asked to seek alternative parking.



Mr. Leslie Fielding, the University's next Vice-Chancellor, pictured on campus last week. Mr. Fielding was here on a two-day visit for a series of briefings with senior University officers. He has a very heavy schedule of commitments in his present job until next summer but he hopes to pay two or three more visits to get to know people on campus before taking up his appointment next October. He will be spending the next 12 months reading into the specific issues affecting Sussex in order to prepare himself for the job.

The Vice-Chancellor designate says that he will be working flat-out between now and July at the EEC Commission in Brussels where he is Director General for External Relations. He will then take his first holiday in two and a half years.

Mr. Fielding sees part of a Vice-Chancellor's job as negotiating with Whitehall. As an "ex-Whitehall warrior - jungle trained" he believes that he might be useful to the University. One of Mr. Fielding's first jobs when he takes over will be to make contact with members of the local community. He says that he is keen to meet leaders of local opinion, people in local government, trades unions, schools - people who might expect something of the University or who could contribute to it.

Mr. Fielding looks upon Sussex as the "Jewel in the Crown of the plate-glass universities", of which anyone should be happy to be Vice-Chancellor. However, he acknowledges that he will be taking over at a time when universities generally are facing many problems. "It is bound to be a challenge and there are bound to be difficult times ahead. Universities are not out of the wood yet and may never be out of the wood."



Earlier this month Professor David Philips, Professor in Residence at the Royal Institution, visited the Education Area to make his own assessment of the work being carried out at the University by local school pupils taking part in Master Seminars in Technology, sponsored by Shell UK with the support of the Royal Society for the Encouragement of Arts, Manufactures and Commerce. Professor Philips is pictured here with some of the sixty 14-year-olds taking part in the current series. A second series of Master Classes in Technology sponsored by the Royal Institution and funded by Shell, is planned to start in October 1987.

**UK RESEARCH FUNDING LAGS BEHIND OVERSEAS RIVALS**

The UK Government invests less money in academic and related research, per head of population, than four out of five of its main rivals, according to a recent report from the Science Policy Research Unit. And the fifth country, Japan, increased its funding by 44 per cent between 1975 and 1982 to bring it much closer to the UK.

The report\*, by Ben Martin and John Irvine, was commissioned by the Advisory Board for the Research Councils (ABRC) and published on the same day as a second study which looked at the standing

of basic research in different countries.

The Chairman of the ABRC, Sir David Phillips, commented: "These two reports together reinforce the Board's contention that the research base in Britain is growing weaker when compared to that of our major industrial competitors. In my view they strengthen the case made in the Board's public expenditure advice earlier this year that the prospect for UK science on present expenditure plans is one of steady decline just when the demands on the science base are growing."

This latest report from SPRU follows earlier work by John Irvine and Ben Martin on assessing the performance of scientific research, which attracted considerable attention with the publication of their book "Foresight in Science. Picking the Winners".

\*An International Comparison of Government Funding of Academic and Academically Related Research. ABRC Science Policy Studies No. 2. Available from SPRU Publications, Mantell Building, price £12.00.

**NATIONAL THEATRE RETURNS TO GARDNER**

The Gardner Centre presents a season of 20th century theatre throughout November, with plays by Brecht, Pinter, John Godber and Caryl Churchill. The season begins with the return of the National Theatre for a second visit this year following their production of Hamlet which played to capacity audiences in February. They bring to the Gardner this time Brecht's *The Mother*, on November 4, 6, 7 and 8, as part of a short tour which ends at the Cottesloe Theatre.

Yvonne Bryceland heads a strong cast as the working class woman who is drawn into the Russian revolutionary movement by her son. The company will also give workshops and talks during the week.

The following week sees Hull Truck on the road to Brighton with John Godber's play *Blood, Sweat and Tears*. This award-winning playwright's work is accessible and entertaining, and his plays for Hull Truck have included *Up 'n' Under* which enjoyed a lengthy West End run. *Blood, Sweat and Tears* is based on the true story of Karen Briggs, who broke out of a mundane existence on a Humberside housing estate to become a judo world champion. A shortened version of the play was recently screened by BBC TV, and the original stage version comes to the Gardner on November 13 - 15.

A Mouthful of Birds, loosely adapted

by Caryl Churchill and David Lan from Euripides' *The Bacchae*, is at the Gardner from November 18 to 22 in a co-production from Joint Stock and Birmingham Repertory, and Channel Theatre's presentation of Harold Pinter's *The Birthday Party* is here from November 27 to 29.

In a concert on November 11 the London Sinfonietta Voices present an exciting and varied programme, contrasting modern works with settings of texts from the 16th century. They will also lead a vocal technique workshop and a schools' concert on the same day. The Chilingirian String Quartet make a welcome return on November 3, performing a programme of Schubert and Shostakovich with award-winning pianist Clifford Benson.

The major exhibition of British ceramics commissioned by the Gardner Centre, *Potted History*, remains on show in the gallery until November 8. In the foyer, from November 1, there will be a remarkable exhibition of painting, drawing, weaving, prints and puppets organised by the Creative Arts Association for people with mental handicap. Eileen Lewenstein's work is on display in the showcases from November 12.

Brighton & Hove Operatic Society are in the theatre until Saturday (Nov.1) with their production of the children's classic *Bugsy Malone*.

**RON TODD TO GIVE HITACHI LECTURE**

Mr. Ron Todd, General Secretary of the Transport and General Workers Union, is to give the fifth Hitachi Lecture on November 18.

This is an annual lecture on industrial relations funded from a grant of £50,000 given to the University by the Hitachi Corporation in 1982. Part of the grant supports the annual lecture while the remainder is used to fund research in the University's Unit for Comparative Research on Industrial Relations.

Mr. Todd, who will be taking as his subject "Incomes and Income Policies", will be speaking at 6.15 p.m. in the Terrace Room of the Refectory. Admission is free and no tickets are required. Previous lectures have been given by Sir Adrian Cadbury, Chairman of Cadbury Schweppes; Professor Sir John Wood of Sheffield University and Chairman of the Central Arbitration Committee; Mr. John Lyons, General Secretary of the Engineers' and Managers' Association; and Sir Peter Parker, former Chairman of British Rail.

**NEWS FROM THE MASS-OBSERVATION ARCHIVE**

The Mass-Observation Archive, housed in the University Library, was originally set up in 1937 by Tom Harrisson and Charles Madge to conduct an 'anthropology' of Britain. The Archive has seen a revival of its social survey work since it came to Sussex in the 1970s.

Out this month, for the first time since its original publication in 1939 as a Penguin Special, is 'Britain by Mass-Observation'. It is published now as the first paperback in a new series, *The Cresset Library*, from Century Hutchinson. There is a new introduction by Angus Calder.

'The Pub and the People', another early M-O publication, will follow in February, with an afterword by Dorothy Sheridan, the M-O's Archivist.

On television, a series made in collaboration with M-O, 'A People's War', starts a 10-part programme on Channel 4 at 10 p.m. on Mondays, on November 10. An introduction to the series 'Stranger than Fiction', can be seen at 11 p.m. on November 3 on Channel 4.



*Hull Truck in John Godber's Blood, Sweat and Tears*

## SUSSEX SIGNS EXCHANGE AGREEMENT WITH CHINESE UNIVERSITIES

The University of Sussex has signed a formal agreement with two of the premier Chinese universities for an exchange of education staff. This is the first official exchange by a Chinese university with a UK education faculty.

The Chinese institutions involved are Beijing Normal, a first-ranking 'Key University' with special national responsibilities for educational development, and Hangzhou University near Shanghai. This is a provincial university with a very active education department and is the nationally nominated centre for the study of British education. The first Chinese visiting fellow is expected to arrive at Sussex in January 1987 from Hangzhou.

The agreement was concluded this summer during a visit to China by Professor Michael Eraut, Continuing and Professional Education Area Chairman, Dr. Keith Lewin, Lecturer in Education, and Dr. Angela Little of the Institute of Development Studies. It followed a preliminary visit by Dr. Lewin to China in 1984 to discuss proposals.

The programme will be financed by the British Council and the Chinese universities and will provide for at least three years of staff exchange. The exchange will focus on areas of activity such as curriculum development, particularly in science and technology; higher education development and planning; teacher education; and programme evaluation.

The agreement allows for two Sussex members of faculty to visit China for two months, for each of the next three years; and for the Chinese to spend



*Sussex staff with Hangzhou colleagues. From left: Dr. Keith Lewin, Dr. Angela Little, Professor Michael Eraut, Professor Wang Cheng Xu, Mr. Xu Hui, Professor Zhang Ju Sheng and Professor Pei Wen Ming.*

ten 'man-months' at Sussex.

The Sussex group spent nearly a month in China this summer, split between the two centres. They visited a number of primary and secondary schools in urban and rural areas; examined the training of teachers at different levels; exchanged information about a wide range of research projects at Sussex and in China; and developed insights into recent shifts in national educational policy.

"Our delegation was made very welcome," Dr. Lewin commented. "We were provided with everything requested - including

bicycles.

"One of the most memorable moments was the banquet hosted by the village committee of Cong Xian (Face of the Sun) village which we were the first outsiders to visit. The plates were three deep by the time we were allowed to stop eating!"

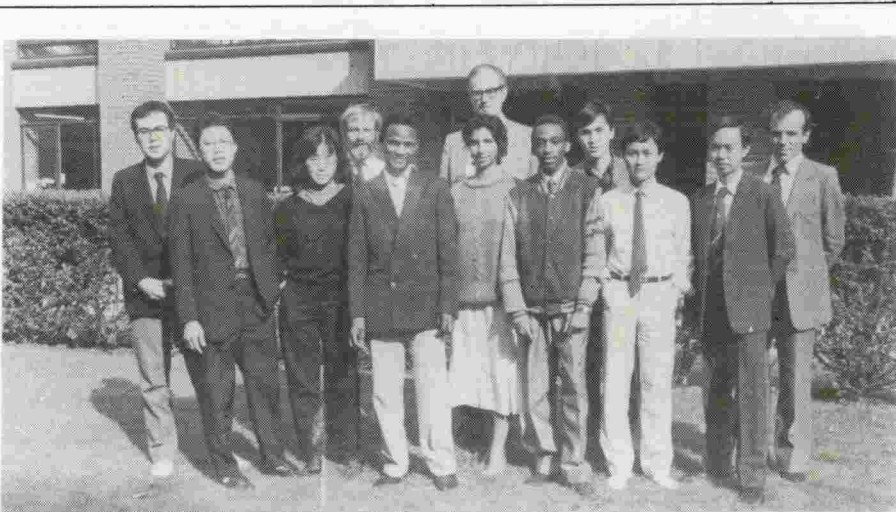
Dr. Lewin anticipates that some collaborative research projects will emerge from the University's new links with Chinese academics. An invitation has already been issued to Sussex education faculty to organise a short training programme in China on materials evaluation.

## VISITORS FROM AFRICA

The Geography Subject Group recently welcomed two overseas visitors who will be working in the University during the current academic year.

Mr. John Were, from Makerere University, Uganda, has an Association of Commonwealth Universities Fellowship. He will be spending the year working with Dr. Ieuan Griffiths on "Trade preference areas in east and southern Africa". Mr. Were has been a Senior Lecturer in the Department of Geography at Makerere for 13 years. AFRAS geographers built up strong links with this Department during the 1960s and early 1970s and see his presence here as part of the rehabilitation of Makerere following the political unrest and civil war in Uganda.

Also welcomed this term is Mr. David Olanrewaju, a lecturer in the Department of Urban and Regional Planning at the University of Ife, Nigeria, who is one of the Sir Adam Thomson (British Caledonian) Scholars currently at Sussex. Mr. Olanrewaju will be spending this term working with Dr. Tony Binns on "The spatial distribution of urban deprivation: the case of Akure Ondo State, Nigeria". He is the second Sir Adam Thomson Scholar from Ife to be attached to the Geography Subject Group.



*The first international students admitted to Sussex University's Integrated Degree Scheme have now started their Foundation Programme at Davies's College, Hove, prior to moving on to their chosen degree course at the University. The Scheme provides a unique opportunity for students of high academic ability to follow a one-year intensive course, instead of the normal two-year GCE 'A' level course, in order to gain admission to the University. Students receive special counselling and access to University facilities during the Foundation Programme and are guaranteed entry to the degree course, subject only to satisfactory progress.*

*Pictured (from the left) are: Turhan Findikoglu (Turkey), Soo L Wu (Malaysia - Kedah State), Yee Ling Tang (Malaysia - KL), Dr. Lionel Ripley (academic liaison officer for the Scheme), Sisa Pityana (South Africa), Diana Castillo (Panama), Professor Bruce Graham (Senior Pro-Vice-Chancellor), Anase Meena (Kenya), Shuji Aoki (Japan), Kee Lui Kho (Malaysia - Kuching), Brendon Choa (Singapore) and Ted Nakhle (Deputy Registrar).*

# NOTICEBOARD

## VACANCIES

The Personnel Office has issued the following summary of posts to be filled. Advertisements for these vacancies have been placed in local and, where appropriate, national press as well as being circulated to the relevant Section Heads and union representatives for circulation to staff and noticeboards. Copies of these advertisements, and further particulars, if available, as well as application forms are obtainable from the Personnel Office, Room 227, Sussex House. This list was compiled on October 18 and is subject to revision. All posts are full-time, full-year and for male or female applicants unless otherwise stated.

### Research

Temporary Research Officer, part-time, Linguistics, School of European Studies (2 years) \*

### Technical

Mechanical Technician, EAPS, Grade 5  
Technical Assistant, EAPS, 1.

### Computing

Computer Operator, Computing Centre

### Clerical & Related

Secretary, part-time, grade 1/2, Biols.  
Secretary, 1/2, MAPS  
Secretary, 2, EAPS  
Secretaries, full & part-time, 2/3, Continuing & Professional Education Area  
Secretary, 1/2, EngAm  
Secretary, 1/2, Euro.  
Secretary to Research Team (SPRU), 1/2  
Bookshop Assistant, 1/2, Bookshop  
Finance Control Clerk, 3, Bookshop  
Manager, Student Co-op, 3  
Deputy Supervisor, Creche (NJC Scale)  
Nursery Nurse, Creche & Nursery

### Manual

Night Security Staff, UCNS Grade D  
Chef, Catering Dept., Refectory  
Barperson, part-time, Sports Pavilion  
Cleaner, part-time, Sportcentre

\* For a case study of an infant acquiring English & Spanish simultaneously. Applicants should be linguistics graduates with native or near-native competence in Spanish, and should be capable of detailed phonetic transcription.

## CAMPUS CHRISTIAN FELLOWSHIP

This is a Christian group primarily for postgraduates, staff and faculty. The group gets together informally each Tuesday lunchtime at 1 p.m., alternating between a School common room and a seminar room. Details can be found in the Diary of Events or obtained from Dr. Paul Lickiss, MOLS (tel. 3141).

## DAAD SCHOLARSHIPS FOR GOETHE INSTITUT LANGUAGE COURSES

The above scholarships are offered to postgraduate students of subjects other than German or German Studies who need to improve their knowledge of German for research purposes. Candidates should be of British nationality, aged up to 32, and have a basic knowledge of German. Grants are given for a 2-month summer course in W. Germany. Further details from Deutscher Akademischer Austauschdienst, 17 Bloomsbury Square, London, WC1A 2LP. Tel. 01-404 4065. Closing date for completed applications: February 13, 1987.

## RECENT BOOKS

New books by Sussex authors include: **Technology and the Human Prospect. Essays in Honour of Christopher Freeman** edited by Roy M. Macleod. With a foreword by Asa Briggs, introduction by Norman Clark and contributions by Charles Falk, Marie Jahoda, Keith Pavitt, Luc Soete and others. Frances Pinter. £25.

**Dialectics of Labour. Marx and his Relation to Hegel** by C.J. Arthur. Blackwell. £22.50.

**The Political Theory of Painting from Reynolds to Hazlitt. "The Body of the Public"** by John Barrell. Yale U.P. £16.95.

**Thermochemical Data of Organic Compounds** by J.B. Pedley, R.D. Naylor and S.B. Kirby. 2nd edition. Chapman & Hall. £55.00.

**User Centred System Design. New Perspectives in Human-Computer Interaction** edited by Donald A. Norman and Stephen W. Draper. Laurence Erlbaum. Paper £14.00.

**Sex and Gender** by John Archer and Barbara Lloyd. A reprint of the revised US edition. Cambridge U.P. Paper, £5.95

All available from Sussex University Bookshop

## CENTRE FOR CONTINUING EDUCATION Open Lectures

Thursday, October 30, 6.30 p.m.  
Lasers in Medicine, Communications and Science  
by Professor Tony McCaffery

Tuesday, November 11, 6.30 p.m.  
Technology in a World of National Frontiers  
by Professor Ronald Dore

The above lectures will be held in the Molecular Sciences Lecture Theatre

Please note that because of the unavoidable absence in Canada of Dr. Jonathan Miller, the 1986 Pelham Lecture has been cancelled.

## HONORARY DEGREES

Nominations for Honorary Degrees to be awarded at next year's Summer Graduation Ceremony are now invited. Nominations should be submitted in confidence to the Vice-Chancellor, who is Chairman of the Honorary Degrees Committee, by October 31, 1986. A statement of up to 200 words should be provided in support of each case, for the guidance of the Honorary Degrees Committee.

Nominations may be submitted by any member of the University.

## OVERSEAS STUDENTS VISAS

Overseas students should be aware that Immigration Officers are not visiting the campus this autumn. Students who are required to renew visas at Lunar House, Croydon, on an individual basis, are warned that there is a delay in the return of passports from the Home Office of 3-4 months. It may help to apply in person at the Home Office.

Visas are now required for all overseas students to visit France, even for one day, other than for all EEC and Swiss nationals. For further details of what to do, contact the Welfare Advice Centre, Falmer House.

## EL SALVADOR EARTHQUAKE APPEAL

A collection is being made by the Chaplaincy towards the relief of those who have suffered from the recent earthquake. Donations, please, to Barbara Barber, Room 3, The Meeting House. Cheques should be made payable to "The University of Sussex".

## SENIOR COMMON ROOM AGM

This will take place on Thursday, November 13, at 1.15 p.m. in the SCR, Refectory Building.

## VICE-CHANCELLOR'S MEETING WITH FACULTY

The Vice-Chancellor's termly meeting with faculty will take place on Thursday, November 27, at 1.30 p.m. in the Senior Common Room, Refectory Building.

## MOTOR VEHICLE REGISTRATION

If you park a vehicle on campus it should display a motor vehicle registration disc for the current academic year. The disc is free and registration forms are available at porters' desks.

## LUNCHTIME MUSIC

**Meeting House**  
1.15 p.m. in the Chapel. Admission free.  
Today (Oct. 28): Sue Pogson (mezzo soprano), Elizabeth Kaye (soprano) and Jonathan Grieves-Smith (accompanist).  
October 31: Iestyn Henson (viola/violin), Ian Clarke (horn).  
November 4: Andrew Jones (guitar)  
November 11: John Birch (organ)  
November 18: Mark Beesley (bass baritone) and Jonathan Grieves-Smith (accompanist)

## Music Subject Group

Concerts in the Falmer House Recital Room 120 at 1 p.m. on October 30 and November 13.

## Sussex Trugs

1 - 2 p.m. Fridays. Playing Fields Pavilion. Mainstream/traditional jazz.

# BULLETIN

The Bulletin is published every three weeks during term-time. The next edition will appear on Tuesday, November 18. Copy must be received in the Information Office, level 2, Sussex House (tel. 8208) by no later than 5 p.m. on Monday, November 10.

We can only inform you, if you inform us - so please remember to let us know about news events.

The Bulletin is for the information of staff and students of the University of Sussex. Published by the Information Office. Photographs by the Media Service Unit. Printed by the University of Sussex Printing Unit.