



Sir Keith calls for fundamental review

Education Secretary, Sir Keith Joseph, has called on universities to undertake an open and wide-ranging period of consultation on the nature and scale of higher education in the 1990s.

His comments imply that further reductions in university expenditure may be on the way but universities will be given more freedom to earn and retain income from non-Government sources.

These are the messages contained in a recent exchange of letters between the outgoing Chairman of the University Grants Committee (UGC), Sir Edward Parkes and Sir Keith.

Sir Keith said he hoped the UGC would be able to make an early start on consultation with the universities on developing strategy for higher education.

Sir Keith hopes that the wide ranging review will consider: funding; the prospects for a fundamental change in the structure of higher education; the Government's desire to see a further shift towards technological, scientific and engineering courses and to the vocationally orientated courses; measures to increase the resources devoted to scientific research and the possibility of greater selectivity in research funding; the scope for rationalisation and the co-operation both within and between universities and with other institutions especially in view of the forecast of a fall in demand for higher education in the 1990s.

On the specific question of funding, Sir Keith has asked the UGC to consider a range of possibilities including maintenance of the real level of support per student implied

by the present plans for 1984-85 and a progressive reduction in the real level of such support of 5-10 per cent. per student overall by the end of the decade and a further 5 per cent. in the five years beyond. It is stressed that these figures should in no way be taken as reflecting any present intention on the part of Government.

Sir Keith also emphasised his belief that in the longer term, universities should, in their own interests, be less dependent on public funds. He argues that, "the higher the proportion of university income that comes from non-Government sources, the greater their freedom of action and their capacity to survive fluctuations in the level of recurrent grant."

Senior university officers are now considering the implications of Sir Keith's letter. Little more will be known until the University receives more specific information from the UGC. However, it seems clear that the University will before the end of 1983 be invited to undertake a strategic planning exercise of a fundamental nature.

In the meantime assumptions about how the current University Plan should be adjusted for 1984-85 will be presented to the Planning Committee on October 12.

New Professors



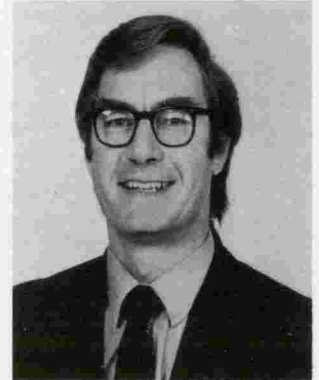
Professor Michael Sumner

Professor Michael Sumner, who has been appointed to the Chair of Economics, took up his new post on October 1. He comes to Sussex from the University of Salford, where he had been Professor of Economics since 1978.

Two members of Sussex faculty have been promoted to professorships from this month. Professor Mike Springford, who has been at the University since 1964, was promoted from Reader in Experimental Physics. Earlier this year he received a £225,000 Special Research Grant from the Science and Engineering Research Council for work on low temperature physics.

Professor Cedric Watts has

been promoted from Reader in English. He came to Sussex in 1965. His publications include a number of works on Joseph Conrad and R. B. Cunninghame Graham.



Professor Cedric Watts



Professor Mike Springford

Privy Council response to Charter petition

The Privy Council has now responded to the resolution passed at succeeding meetings of the Council on December 10, 1982 and February 4, 1983 to amend the Charter and Statutes.

The University has been requested to consider three main points for insertion into the proposed statutes: the usual provision for excluding student members from reserved areas of business; the inclusion of redundancy on the grounds

of financial exigency amongst the legitimate reasons for terminating the appointments of academic faculty; and in relation to the composition of the Senate, a closer definition of senior members of the Academic faculty.

University Officers are seeking further information and opinions on these requests, and undertaking a variety of consultations prior to reporting to the Senate on October 26 and the Council on November 2.

Hope for the elms...

Thirty-two elms have been lost on campus this year through Dutch Elm Disease - but there are hopes that more trees can be saved if treated in time with a new curative injection treatment.

Dutch Elm Disease has been especially rife on campus this year because of the hot summer, John Warton of the Estates Department reports. "Added to this has been the frequent north and north-easterly winds assisting the flight of the beetles across the Downs from the north" - which is outside the control area set up around Brighton.

The new injection treatment, the use of which is limited

to the more mature trees, has already proved successful on a tree by the Refectory which was injected last year and the results of treating another large tree this year will be known next Spring. The Estates Department is currently investigating the possibility of purchasing its own curative injection equipment.

It is also looking at a new type of pellet treatment producing a fungus which lives off the Dutch Elm Disease fungus. A hole is drilled in the tree and the pellet inserted and sealed off: a quicker method to use than the injection system.

As in past years, a number

of diseased tree limbs have been removed this summer.

...and Russell's Clump is on the move

The University's tree-planting programme to replace old or diseased trees is having the effect of moving Russell's Clump - the belt of beeches to the north-west of the Gardner Centre - further away from the University.

The large beeches, up to

200 years old, are gradually becoming dangerous and have to be felled. For many years the University has been planting new beeches, but because these will fail to reach maturity if placed between existing large members of the species, a new belt is being developed on the north-west edge of the Clump.

But looking many years into the future, Russell's Clump should eventually return to its original position as the last of the old trees are felled, permitting replanting on the south-east of the belt.

Other interplanting of beech trees is also proceeding throughout campus wherever possible.

Major ewer exhibition comes to campus

A major exhibition of ewers spanning 1600 years - including items never previously seen in public - opens today in the Barlow Gallery. It brings together 80 examples from China, Japan, Thailand and Indonesia.

The display concentrates on the spouted ewer, with a large section devoted to the handleless kendi, the form of ceremonial pouring vessel that is closely associated with the peoples of South-East Asia.

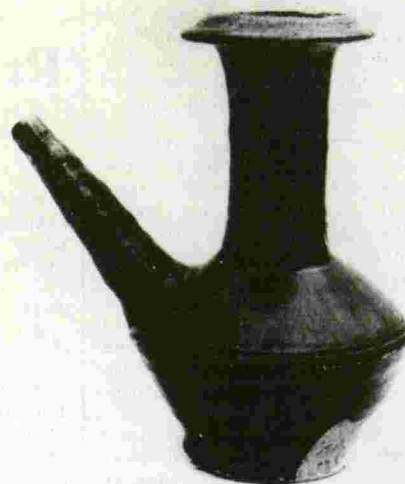
The main emphasis is on the ceramic ewer, although metal, jade and glass are also represented. Examples come from private collections in Britain, Holland and Spain and most have never previously been seen in public. Many are from the collections of South-East Asian ceramics formed by Mme. Nicol Guérin and J.D. van Oenen.

The ewer form offers interesting challenges to artists. Here is a vessel that has to meet two very practical needs, storing and serving. A number of different parts have to relate to each other - body, spout, handle, perhaps also cover. The technical ability of the designer is tested to a very special extent. So, too, is his imagination: many ewers make use of bird or animal or even the human form.

The Barlow Gallery is the permanent home of the collection of Chinese ceramics, bronzes and jades formed by Sir Alan Barlow, Bt., for many years President of



Elephant ewer - Thailand, 15th century - one of the more unusual designs.



Ewer with tubular spout - South China, 14th century - traditional form.

the Oriental Ceramic Society of Great Britain. His early Chinese ewers will form the basis of the exhibition. The Barlow Collection of more than 400 items was bequeathed to the University and the Gallery was opened in 1974.

The Spouted Ewer exhibition is one of a series sponsored in galleries outside London by the Oriental Ceramic Society.

A catalogue to the exhibition is available, with many illustrations, a chart of types, and essays on the ewer by Dr. John Sweetman, Curator of the Barlow Collection, and on the kendi by Nicol Guérin.

The exhibition can be viewed in the Barlow Gallery, which is adjacent to the University Library entrance, on Tuesdays and Thursdays from 11.30 a.m. to 2.30 p.m. and on Saturdays from 2.30 p.m. to 4.30 p.m. The exhibition of ewers ends on November 17.

Admission is free.

Get off your bike!

Estates and Maintenance Department has received a number of complaints that cyclists (and motorised cyclists) are riding through the underpass from Falmer Station without dismounting. Please remember that people using the underpass include the deaf, blind, disabled and children - so GET OFF YOUR BIKE!

PEOPLE IN THE NEWS



Professor Roger Blin-Stoyle

PROF. BLIN-STOYLE

Professor Roger Blin-Stoyle of the School of Mathematical and Physical Sciences, has been appointed Chairman of the new School Curriculum Development Committee.

The Committee is one of two bodies - the other is the Secondary Examinations Committee - which the Education Secretary, Sir Keith Joseph, has set up to replace the Schools Council.

Professor Blin-Stoyle's appointment is part-time and is initially for five years.

PROFESSOR BRYN BRIDGES

Professor Bryn Bridges, Director of the MRC Cell Mutation Unit, has been elected Chairman of the International Commission for Protection Against Environmental Mutagens and Carcinogens from this month.

NEW DEANS

Professor D.F.Brewer became Dean of the School of Mathematical and Physical Sciences on September 1 for a three year period in succession to Professor J.P.Elliott.

Dr. R.J.Benewick took over as Dean of the Graduate School in Arts and Social Studies on July 1 for three years in succession to Professor B.D.Graham.

FORMER STUDENT'S ON 'ASK THE FAMILY'

Former Sussex students Bill and Eileen Aldwinkle are appearing in 'Ask the Family' on BBC1 tomorrow evening at 6.30 p.m.

Bill and Eileen (née Williams) graduated in Maths in 1965.

SIR RON MASON

Sir Ron Mason, Professor of Chemistry, took early retirement at the end of last month.

Sir Ron was, until recently, on secondment to the Ministry of Defence as its Chief Scientific Adviser.

He is currently conducting a one-man enquiry for the Government into the funding of scientific research in Britain.

The review, due for completion this month, will concentrate on the balance between research commissioned by government departments and that funded by the five research councils and the University Grants Committee.

CHAIRMANSHIP OF COUNCIL

Mr. Tom Mynors and Sir John Barnes have been appointed Chairman and Vice-Chairman respectively of the University Council for a further period of one year until July 31, 1984.



Father Bruce Harbert

NEW CATHOLIC CHAPLAIN

A new Roman Catholic Chaplain has recently been appointed. Father Bruce Harbert has moved to Brighton from Caterham. He can be contacted in Room 9 of the Meeting House (int. tel. 09-308) or at Howard House, the Catholic Chaplaincy, on Brighton 607928.

WELFARE OFFICER ON UKCOSA COMMITTEE

Ann Eyles, Welfare Officer of the Students' Union, has been elected to the Executive Committee of the United Kingdom Council for Overseas Student Affairs.

FAREWELLS



Mary Coppinger, Assistant Registrar in the Examinations Office, who joined the University in its very earliest days - on October 1, 1961 - retired this summer. She is pictured here receiving her farewell presentation from the Pro-Vice-Chancellor (Arts), Professor Margaret McGowan. Mary particularly thanks all her friends for their good wishes and generous gift.

Professor A.K.Thorlby, Professor of Comparative Literature and German, and Mr. S.B.John, Reader in French, who joined the University on the same day as Mary Coppinger, also left this summer.

Another long-serving member of the University to retire

this year is Professor Norman MacKenzie. In his time at Sussex since 1964, Professor MacKenzie has held many posts including Chairman of Education, Director of the School of Education and Director of the Centre for Educational Technology.

Other departures after many years service were Miss J.M. Collings, Mr. J.Field, Mr. R.Guha, Dr. C.Jenkins, Miss J.E.Mann, Dr. N.H.H.Osmond, Mr. R.W.Bott, Dr. E.W.Schulkind, Mr. P.R.Lattin, Ms. J.Bell and Mr. D.Meyer.

Not all the above have bid a final farewell to the University - some will still be on campus from time to time.

PRO-VICE-CHANCELLOR

Professor John Lyons' appointment as Pro-Vice-Chancellor has been extended for a further period from August 1, 1983.

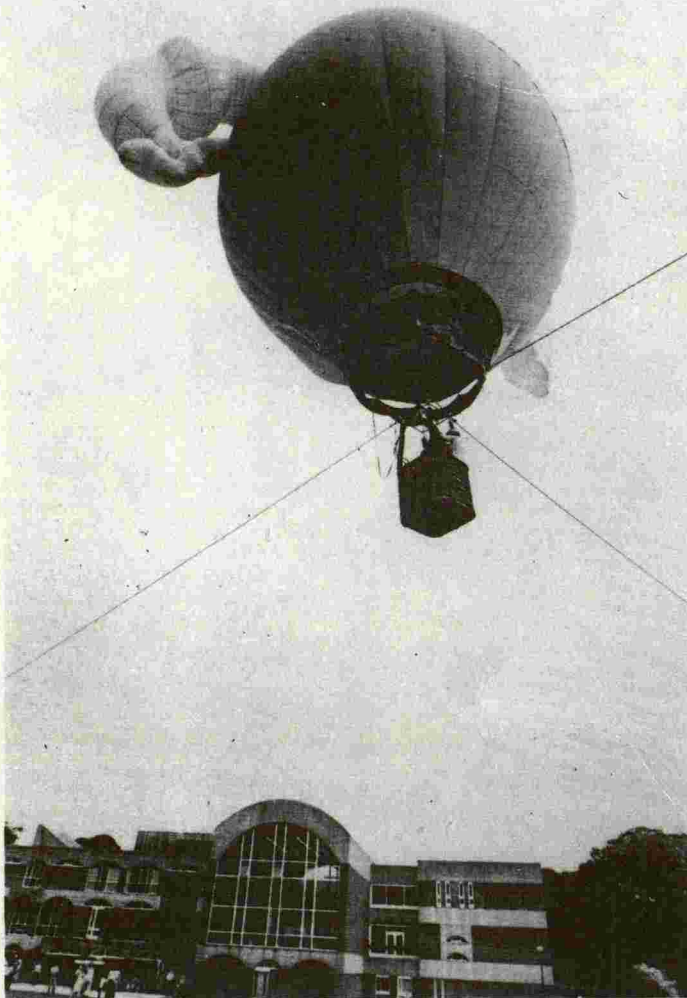
PROF. MARGARET BODEN

Professor Margaret Boden, Professor of Philosophy and Psychology, has been elected a Fellow of the British Academy.



During the summer, the Creche moved to its new location in Norwich House, pictured here.

Our B.A. photo album



Up..... up but not away. The hot air balloon on its tethered launch.



and still they came - registration in the Sussex House Common Room

B.A. President Sir John Mason (right) with the Deputy Mayor, Councillor Geoffrey Theobald.



← and this is what they were looking at

The British Association meeting at Sussex has been acclaimed as one of the most successful in recent years. Its success comes as a welcome boost to the BA which felt that its future was threatened by the growth in individual specialist conferences and by large international gatherings.

The meeting was planned to be the most ambitious ever and the organisers were particularly delighted by the interest created by the inclusion of 14 seminars provided by the scientific societies and by the family programme which was featured for the first time.

Evidence of the success of the meeting has come in numerous letters and comments from regular BA attenders and increases in registrations and the numbers taking up accommodation.

A total of 2160 people regis-

tered, a figure which has only been exceeded twice in the last 15 years. More than 1,000 people stayed each night on campus and this was also the highest residential figure for many years, exceeding even those for the 150th anniversary meeting at York. Sussex also managed to secure ten times the number of exhibitions present at last year's conference which proved a valuable source of income.

Local Secretary and Organiser Roger Taylor commented: "These statistics are all the more remarkable when account is taken of the economic situation compared to earlier years and the fact that the fees were raised considerably."

The University's efforts were clearly appreciated by participants who were full of praise for the food and accommodation, the meticulous organisation, and the family pro-

The reception provided by Brighton Borough Council in the Corn Exchange.



Several well-known figures visited the campus —



..... Clive Jenkins

gramme, which all contributed to an excellent overall impression.

The campus looked at its very best having been brought back into shape in time by the efforts of the University's grounds staff. In addition the Brighton Parks Department provided floral displays in the Refectory which remained until the end of the conference season.

Some people enjoyed their stay so much that they extended it, some have already booked into the holiday flats for 1984, and one person was so moved as to give a donation to the University. This appears to be unique following a BA meeting.

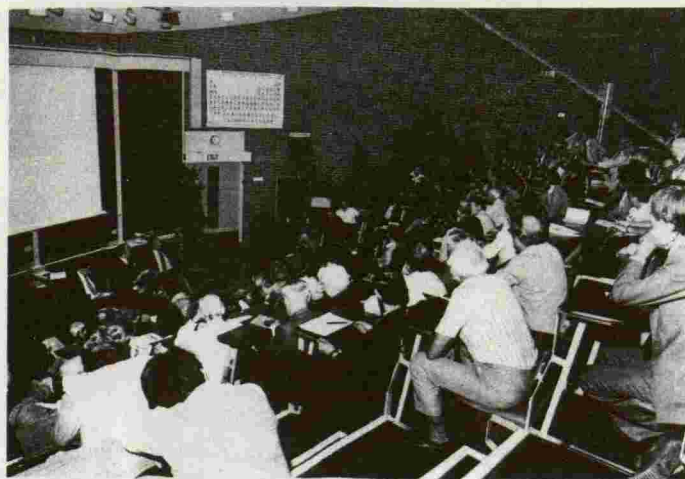
The press and media turned up in greater numbers (more than 230) than ever before and the BA and the University received a great deal of publicity. The Borough of Brighton must also be well

pleased with the publicity it received and the compliments expressed on the magnificent reception in the Corn Exchange which followed the Opening Ceremony in the Dome.

The organisation of future meetings will also benefit from numerous changes and innovations in the control and planning of the conference. A delegation from East Anglia (the next host) attended for most of the week to see how things are done.

"All concerned did a magnificent job. The Student Team in particular excelled, covering duties from cleaning windows, to helping the disabled, serving coffee, etc. They were commented upon most favourably by all who encountered them. They, together with all those numerous people who helped are to be congratulated on their achievements," added Roger Taylor.

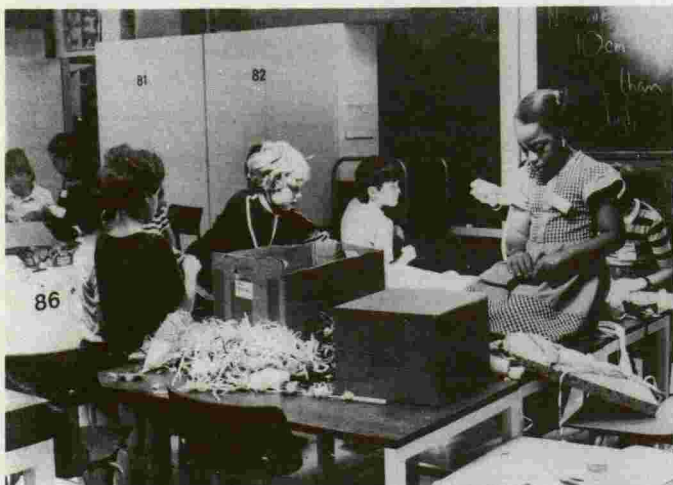
One of more than 300 lectures given during the week.



..... Rt. Hon. Roy Hattersley



..... Rt. Hon. Kenneth Baker (left) talking to B.A. officer, Mr. Bernard Dyer.



A family activities programme was a special new feature of this year's Meeting.

Pictures by MSU Photographic Unit

Overseas students - financial support

The Foreign and Commonwealth Office has announced details of the various schemes of financial support for overseas students. The schemes relate to students from the following countries:

Hong Kong - all bona fide Hong Kong students following a full-time first degree course in 1983-84 and who have been classified as overseas students for the purposes of fees can receive a grant, the amount of which will be subject to a means-test in Hong Kong. Applications should have been submitted by October 1, 1983. Late applicants may be eligible for an interest free loan provided their application is received by November 1, 1983. Forms should be sent to the Secretariat of the University and Polytechnic Grants Committee in Hong Kong.

Cyprus - Cypriot students following full-time first degree courses and assessed as overseas students for fee purposes will be eligible for an award which will have a minimum value of £1,000. Forms are available from the Student Administration Section - Arts D406 and must be returned no later than October 26, 1983.

Dependent Territories* - students at undergraduate

and postgraduate level from the dependent territories may be eligible for a grant equivalent to the difference between the home and overseas student rate of tuition fee.

Forms are available from the Student Administration Section - Arts D406 and must be returned no later than October 26, 1983.

Malaysia - details of a scheme of assistance for certain students nominated by the Government of Malaysia may be obtained from the Malaysian Students Department, 44 Bryanston Square, London, W1.

FCO Scholarships and Awards Scheme - applications may be made through British missions in the student's country of domicile for awards under the Scheme which is intended to aid British cultural and economic relationships. Normally the emphasis will be on postgraduate or post-experience courses but undergraduates will also be eligible.

Further details of the above schemes are available in the Student Administration Section.

* Anguilla, Falkland Islands, Montserrat, Pitcairn Islands, St. Helena, Turks and Caicos Islands, British Virgin Islands, Ascension and Tristan Da Cunha.

Overseas students' fees

New Regulations have been issued by the Secretary of State for Education relating to overseas students' fees which may enable some overseas students to claim reclassification as lower rate fee payers for 1983-84.

A letter has been sent to the pigeon-hole address of all students who paid fees at the higher (overseas) rate in 1982-83 and who are expect-

ed to return to their course in 1983-84. Details are also available in the Registration Room in Sussex House (until noon this Thursday).

Claims for reclassification should be submitted at Registration and in any case by no later than October 14, 1983. The Regulations make no allowance for retrospective claims for fees paid in previous years.

University I.D. card

The University is issuing a staff membership card which will be acceptable as proof of being employed by the University. These cards are free and can be obtained from the Personnel Office. Staff are advised to apply immediately as cards may take some time to process.

These cards will be required from November 1, 1983 if you are using any facilities where identification is required, e.g. sport facilities, Isle of Thorns, etc.

When applying, please print

your name in block capitals, state what job you do, the area in which you work, and enclose a passport size photo.

Any student who wishes to book or use the sport facilities must produce a current registration card on every visit. This is the only acceptable form of identification and is proof that you should not pay either a guest fee or the public rate.

These cards are not transferable.

Film Advisory Service

The Film Advisory Service now operates from the Audio-visual Materials Room in the University Library. The member of faculty responsible is Kathie Lundh, who can be reached during normal office hours by internal telephone on 04-880 (Cataloguing Office) or on 04-828 (A/V Room).

As the staff time available to maintain this service has been considerably reduced, the Service would find it helpful if requests for film bookings could be made as early as possible, and at least one month ahead of proposed screendate.

Fill that gap!

From this week it is now possible to get dental treatment on campus. A National Health Service dentist has opened a surgery on the ground floor of York House. Anyone requiring dental treatment may make enquiries, or an appointment, by ringing internal telephone 08-230 or Brighton 602809.

ADMIN MOVES

Deputy Secretary Pat Tear has moved from the Refectory building to Sussex House. He is now located in room 317 (int. tel. 05-233) and his secretary, Mrs. Audrey Killick, is based in room 329 (the Information Office) on int. tel. 05-234.

Arts D changes

The following moves have taken place, although internal telephone numbers remain unchanged:

| | |
|--|-----------|
| All Admissions | 6th floor |
| Administrators - Wal Simon for postgraduate admissions; Lawrence Suss, undergraduate admissions; Elizabeth Stewart - operational procedures to support both. | |
| School of Education Office | 6th floor |
| Sue Yates | |
| Graduate Office | 4th floor |
| Yvette Ashby | |
| Undergraduate Office and Student Records Office | |
| Penny Spelling | 4th floor |
| Examinations | 3rd floor |
| Sarah Butler | |

MASS-OBSERVATION

The Mass-Observation Archive is now located on the first floor of the Library, int. tel. 04-883.

Managing directors' club to be launched

A Managing Directors' Club is to be launched by the University next month.

Membership will be open to managing directors and chief executives of companies and public utilities. The aim is to provide an opportunity not only to promote the activities of the University and improve relations with industry, but equally important to provide a vehicle for the membership to discuss problems of mutual interest.

This is a new venture for Sussex, but similar clubs are organised by many other universities.

It is expected that members will represent companies from East and West Sussex, as well as some from further afield.

It is anticipated that the Club will elect a chairman and committee; the University would provide administrative and secretarial support.

Children's play room

All parents who may have children on campus at any time are welcome to use the facilities of the Children's Play Room in the Park Village Social Centre, which contains lockable play boxes. The room can also be used for meetings of up to 12 people. Further details and bookings through Bill Kerr, Domestic Bursar, Park Village.

DEATHS

It is with sadness we report the deaths of Mr. Len Ilott and Mrs. V.A. Johnson during the summer vacation.

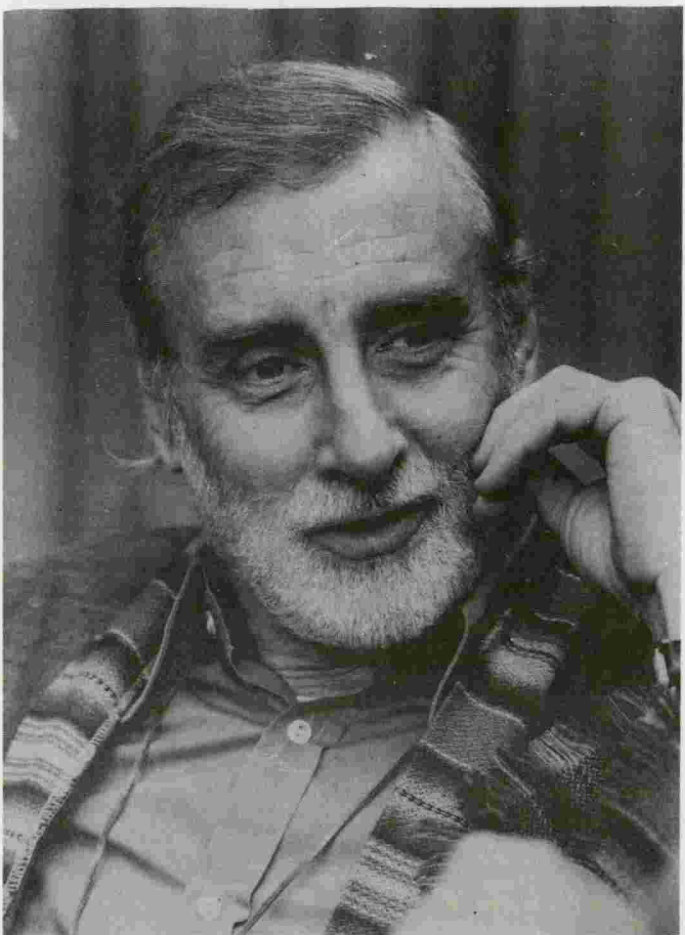
Mr. Ilott, who died on July 26, had been a porter in Arts for the past eight years.

A memorial service for Mr. Ilott will be held on Thursday, October 13, at 1 p.m. in the Meeting House Chapel.

Mrs. Johnson was the Librarian of the Science Policy Research Unit. She joined SPRU in 1971 as Assistant Librarian. Mrs. Johnson died on August 23 after a long illness.

We also regret to report the death of 'Cas' Markowiak, former Senior Programmer in the Data and Statistics Office, who died suddenly last month.

Gardner Arts Centre



Walking backwards for Christmas? Spike Milligan, who will be appearing at the Gardner Centre on December 14 to 17.

Drama, concerts, exhibitions, opera, dance, poetry, children's events, postcards and crafts for sale, quartet in residence, pottery, silversmithing, wood engraving, life-drawing and paper-making classes, bar and snack bar, and Christmas with Pinocchio - the Gardner Centre undoubtedly has something for you!

The Gallery is open from 10 a.m. to 6 p.m. Monday to Saturday and during performances. The Bar hours are weekdays 12 noon - 2.30 p.m., and 5.30 p.m. to end of show. The snack bar is open every weekday from 12 noon - 2 p.m. serving a wide range of delicious salads, sandwiches and hot

snacks, and from 6 p.m. when there are performances.

Appearing this term - George Melly, Derek Griffiths, Spike Milligan, City of London Sinfonia, Extemporary Dance Theatre, Peter Donohoe, the Young Vic, Chilingirian Quartet, and on exhibition - watercolours, knitwear, constructivism, rugs, hand-painted silk, and, opening tomorrow (October 5), 'Paper as Image' explores new developments in handmade paper by artists from several countries, including David Hockney and Anthony Caro. Come in and see what's going on and pick up a leaflet from the Box Office (open 10 a.m. - 6 p.m.) for full details of the programme.

TOP COUNTY SQUASH PLAYERS ON CAMPUS

Many of the top county squash players will be on campus from October 7 to 9 for the Unit C Sussex County Closed Men's and Women's Squash Championships.

Barbara Diggins of Lewes, the England Captain, and current holder of the women's

title, has delayed her departure for the World Championships in Australia, in order to take part. The University's own Wendy Berry, who is the County Captain, will also be participating. Spectators are welcome, free of charge, and further details are available from the Sportcentre.

Admission targets achieved early

For the first time for many years the University achieved its admissions targets before the beginning of September. The UCCA clearing system was used for only a small number of overseas students.

of meeting intake targets. Universities affected in this way will no doubt review the situation in the coming months.

"Additionally, the withdrawal rate prior to admission, especially in Arts and Social Studies subjects, is becoming more unpredictable and may give rise to difficulties in matching intake targets in some subjects."

Another encouraging feature is that the high average 'A' level grades of recent years has been maintained.

"The results of this year's admissions cycle have been encouraging," Admissions Officer Lawrence Suss commented. "However, there were one or two new problems. The upwards drift in 'A' level requirements at many universities led to a higher proportion of provisionally held candidates being placed which added to the difficulties

Looking to next year's intake, candidates will be helped by the new format of the Prospectus (old Guide for Applicants) and the subject leaflets which were recently published.

Nationally, approximately 172,000 candidates applied through the UCCA for entry to first degree courses in U.K. universities. This represents an increase of one per cent.

Graduate club founded



Richard Haslam-Jones (left) and John Spiers at the weekend conference.

The University of Sussex Society, the new association for Sussex graduates, was officially launched at a weekend conference attended by about 55 former students on 9-11 September.

Secretary. Richard Haslam-Jones is a marine engineer with the Blue Star Line and Stephen Carter is Systems Manager and Senior Systems Analyst in the University Administration Data Processing Office.

The Founding General Meeting on the Saturday afternoon of the Conference adopted the Society's Constitution, which had previously been approved by the University Council, and elected the Executive Officers and members of the Management Committee.

The weekend Conference was greatly enjoyed by those who attended. Lord Fulton, the first Vice-Chancellor of the University, was guest of honour at the Conference dinner, and Emeritus Professor Quentin Bell gave the main guest lecture on "Bloomsbury by the Sea". Other lecturers were Emeritus Professor Marie Jahoda, Professors Frank McCapra, John Maynard-Smith and Sydney Prevezer, and Dr. Aaron Sloman.

The first Chairperson is John Spiers (Eng/Am 1965-68), now Chairman of the Harvester publishing group, with Richard Haslam-Jones (EAPS 1973-76) as Treasurer and Stephen Carter (MAPS 1965-68) as

NON-ACADEMIC VACANCIES

The Personnel Office has issued the following summary of non-academic posts to be filled. Advertisements for these vacancies have been sent to Section Heads for circulation to staff, and to union representatives. Copies of the advertisements (and further details if available) and application forms are available from the Personnel Office, Room 206, Sussex House. The list was compiled on September 23.

All posts are full-time, full-year, permanent, for male/female, unless otherwise stated.

Clerical and Related

Attendant, grade 2, part-time, Sportcentre.

Clerk 1/2, Admissions, Student Administration Section, Arts D.

Clerk (Payroll), 1/2, Salaries Office, Sussex House.

Clerk (Records), 1/2, part-time, Personnel Office, Sussex House.

Clerk (Superannuation), 1/2, part-time, Salaries Office, Sussex House.

Clerk/Typist, 1/2, part-time, Personnel Office, Sussex House.

Library Assistant, 1/2, part-time, part-year and temporary, during academic year 1983/84, Education Area.

Secretary, 1/2, part-time, to end of August 1984, Sportcentre.

Manual and Ancillary

Caretaker, UCNS D, residential, temporary for two years, Playing Fields Pavilion.

Carpenter/Joiner, Estates and Maintenance.

Cleaner, UCNS A, part-time, male, Sportcentre.

Cleaner, UCNS A, part-time, Refectory.

Kitchen Porter, UCNS A, part-time, part-year, Falmer House.

Painter, Estates and Maintenance.

Teamaker, UCNS A, part-time, Arts D.

Technical

Research Technician, 3, from mid-November 1983 to 30/9/84, Biology.

Electronics Technician, 6, 5 years from November 1983, Biology.

Research Technician, 3, 3 years from 1/10/83, MAPS.

Research Technician, 5, 3 years from 1/10/83, MAPS.

LUNCHTIME EVENTS

Every Friday, 1 to 2 p.m. in the Playing Fields Pavilion, the **Sussex Trugs** play mainstream/traditional jazz.

Tuesday, October 18, 1.15 to 2 p.m. in the Meeting House, an **organ recital** by John Birch.

CENTRE FOR CONTINUING EDUCATION

Evening classes on campus:

Places are still available on the following courses to be run on campus this term:

CENTRAL CONCEPTS IN PHYSICAL AND NATURAL SCIENCES. Tutor: Mike King. Tuesdays, 5.30 p.m. starting on October 25. 10 week course, £16.50.

PARENTS AND GIFTED CHILDREN. Tutor: Florence Maltby. Thursdays, 7.30 p.m. starting on October 6.

10 week course, £15.00.

TAKE IT AS READ: A PRACTICAL INTRODUCTION TO THE ANALYSIS OF THE MEDIA. Tutor: Paul Brown. Thursdays, 6.30 p.m. starting on October 6.

20 week course, £25.00.

For further details of the above courses, telephone Mrs. Ivy Sharpe on 03-129.

Public lecture:

NORMAL ANGELL AND THE DISUTILITY OF WAR by Bruce Miller, Professor of International Relations, Australian National University, Canberra.

Thursday, October 27, 6.30 p.m. in the Molecular Sciences Lecture Theatre.

Occasional Paper:

THE LINGUISTIC HISTORY OF EARLY SUSSEX: THE PLACE-NAME EVIDENCE by Richard Coates, CCE Occasional Paper No. 20, has just been published. It offers the most up-to-date study of place-name evidence in the land of the South Saxons and assesses the interaction in linguistic terms of the new settlers with the more established inhabitants, as well as providing a comprehensive bibliography. Available price £1 (plus 25p p & p) from CCE, Educational Development Building.

SMALL ADS

WANTED - Drawing Board (A1 or larger) with stand and parallel motion. Please ring Janet Stevens on 05-194.

RUGBY - Any staff or postgraduates interested in playing rugby for the University, please contact me, Dave Beer on 07-164. We are trying to enlarge the club this season and would welcome players with experience invaluable to younger players. We also need help with coaching, so if you can assist in any way we would be very grateful.

RECENT PUBLICATIONS BY SUSSEX AUTHORS

Recent publications by Sussex authors available from SUSSEX UNIVERSITY BOOKSHOP include:

SURVIVING DIVORCE: Men Beyond Marriage by Peter Ambrose, John Harper and Richard Pemberton. Harvester. £18.95.

THE NATTERJACK TOAD by T.J.C. Beebee. Oxford U.P. £9.95.

THE COMMON MARKET: 10 Years After, edited by C.D. Cohen. Philip Allan. Paper £6.95.

SELECTED PLAYS OF JOHN WEBSTER, edited by Jonathan Dollimore and Alan Sinfield. Cambridge U.P. Paper. £6.95.

HUMANIST MARXISM AND WITTGENSTEINIAN SOCIAL PHILOSOPHY by Susan M. Easton. Manchester U.P. £16.50.

LONG WAVES IN THE WORLD ECONOMY, edited by Christopher Freeman. Butterworth. £40.

RECONSTRUCTING LITERATURE, edited by Laurence Lerner and including contributions by Cedric Watts, Gabriel Josipovici and Anthony Thorlby. Blackwell. £15.

A NEW MIMESIS. Shakespeare and the Representation of Reality by A.D. Nuttall. Methuen. Paper. £5.50.

INFORMATION, ECONOMICS AND POWER. The North-South Dimension, edited by Rita Cruise O'Brien and including contributions by Stephany Griffith-Jones and Carlos Fortin. Hodder. Paper. £7.50.

CIVIL LIBERTIES IN BRITAIN DURING THE SECOND WORLD WAR. A Political Study by Neil Stammers. Croom Helm. £14.95.

ART & DESIGN CONFERENCE

The University of London Institute of Education is running a conference on November 10 on "Teaching and Learning in Art and Design: Current Research and Development in the UK". Further information from Marilyn Sherwood, Art and Design Dept., University of London Institute of Education, 20 Bedford Way, London, WC1H 0AL. 01-636 1500, ext. 243.

HONORARY DEGREES

Nominations for Honorary Degrees to be awarded at next year's Summer Graduation Ceremony are now invited.

Nominations should be submitted in confidence to the Vice-Chancellor, who is Chairman of the Honorary Degrees Committee, by October 28, 1983. As much information as possible should be given in justification of each proposal.

TRAVEL AND SUBSISTENCE RATES

Subsistence allowances

Current rates for actual expenses up to a maximum of:

for absence from home (not overnight) of
 4 to 8 hours: £4.10
 8 to 12 hours: £7.10
 12 to 16 hours: £8.90
 over 16 hours: £10.40
 for an absence from home overnight (up to 24 hours) £27.30 (£31.00 London).

For overseas travel, £48 per diem for Europe; £58.30 for North America. British Council rates apply for other areas.

Travel allowances

Current rates are:

Car mileage: 23.5p
 Motor cycle mileage: 5p
 Essential car users: £386 per annum, 18p per mile

TERM DATES

This term ends on Friday, December 9. The Spring Term runs from Monday, January 9 to Friday, March 16, 1984. The Summer Term begins on Wednesday, April 25 and ends on Friday, June 29, 1984.

Watch out for term dates for the following three years in future Bulletin editions.

UNIVERSITY CLOSURES

The University will be closed for the Christmas and New Year holiday from Friday, December 23 to Monday, January 2, inclusive.

BULLETIN

The Bulletin will be published every three weeks this term. The next edition will appear on Tuesday, October 25. Copy must be received in the Information Office by 5 p.m. on Monday, October 17.

Other publication dates are: November 15 (copy date November 7) and December 6 (copy date November 28). We can only inform you, if you inform us - so please remember to let us know about news events. Information Office, Room 329, Sussex House (int. tel. 05-155).

The Bulletin is for the information of staff and students of the University of Sussex. Published by the Information Office and printed by the University of Sussex Printing Unit.