

UNIVERSITY OF SUSSEX

THE BULLETIN

Published by the Information Office

Tuesday, December 12, 1978

STUDENT NUMBERS

At its meeting on December 6, Planning Committee was informed that the University Grants Committee had recently issued a letter to all universities on Admissions for 1979-80.

The UGC expressed its concern that the number of overseas students (as defined for fees purposes) had again risen in the current year, notwithstanding its earlier indications to universities that the number should fall back to 1975-76 levels.

The UGC advised that should the trend in overseas student numbers be reflected in 1979-80, universities would experience difficulty in achieving the pattern of 90 per cent home/10 per cent overseas students, on which the provisional recurrent grant for 1981-82 has been based.

If the number of home students falls below the level allowed for in the UGC's plans, the UGC considers that there is a distinct possibility that the provisional grant for 1981-82 would be reduced.

Alternatively, if that level is achieved but is coupled with a continued increase in overseas student numbers so that the total (university) student population exceeds 310,000 in 1981-82 then the consequent reduction in resources per student would set a pattern for the future.

Planning Committee agreed that the Pro-Vice-Chancellor should set up a small group to explore in detail the implications for Sussex of the issues raised by the UGC's letter.

ALMOST FIRST!

Statistics just available for 1976-77 show that the University of Sussex continues to maintain its position as one of the most successful universities in attracting research grant income.

For the third year running, Sussex was second only to Oxford in the proportion of its total income drawn from research grants and contracts.

In 1976-77, 17.8 per cent of Sussex University's income came from research grants and contracts, against a national average of 10.9 per cent. Sussex, too, has almost closed the gap between it and the leader Oxford which is only 0.1 per cent ahead.

Cambridge, Birmingham and York fill the following three places in the league table.

The figures, which have been received from the University Grants Committee and which will

eventually appear in Volume 6 of the D.E.S. Statistics of Education, also show that Sussex continues to rank high in most of the subject groups in which it is featured.

Sussex was in the 'top ten' for six of the eight subject groups taught here.

In particular, it was first in Education, Physical Sciences and Social Studies, and third in Biology.

Although national figures for 1977-78 are not yet available, indications are that Sussex has maintained its position.

Overall research grant income in 1977-78 represented 18.8 per cent of our total income compared with 17.8 per cent in 1976-77.

A list of the latest research grants to be received by the University, totalling £219,844, can be found on page 2.

A MERRY CHRISTMAS



AND A HAPPY NEW YEAR

The Information Office would like to thank all those who have contributed news items, feature stories, illustrations, photographs, and in any other way to The Bulletin during the Autumn Term. Please continue to send us items of interest.

The Bulletin is published fortnightly during term-time by the Information Office for the information of members and employees of the University. The next issue will be published on Tuesday, January 16, 1979 and copy for inclusion should reach the Information Office in Sussex House by noon on Tuesday, January 9, 1979.

If you have any news items, feature articles, information or anything else you would like to see appear in The Bulletin, please contact Jennifer Payne, Information Office, Room 330, Sussex House (int. tel. 05-123).

Extracts from The Bulletin may not be published without the Information Officer's permission.

RESEARCH GRANTS

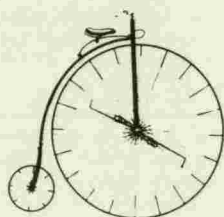
The following research grants, totalling £219,844, have been awarded to the University since October.

Dr. M.Wallis	£27,024	(3 years) from the Agricultural Research Council for Dopamine and the regulation of the secretion of pituitary prolactin.	Dr.G.Martelli	£33,890	(3 years) from the SRC for U.K. contributions to the data pre-processing for the GEOS II wave experiment.
Dr. R.Taylor	£3,272	(1 year) from the Cancer Research Campaign for Acid catalysed hydrogen exchange of carcinogenic aromatic hydrocarbons.	Prof. K.Smith	£4,619	from the SRC for a proposal to Search for the Electric Dipole Moment of the Neutrons.
Dr. R.A.Boakes	£3,030	from the Leverhulme Trust Fund for visiting fellow.	Prof. R.J.Tayler	£1,635	from the SRC for observations at AAO.
Dr. D.J.Sherratt	£21,018	from the Medical Research Council for conjugal mobility of small plasmids.	Dr. J.I.Gershuny	£10,212	from the Social Science Research Council for changing patterns of time use.
Dr. D.Schulster	£2,213	from the Royal Society for cell fusion studies on hormone receptor transfer.	Prof.B.H.P.Rivett	£1,928	from the SSRC for development and application of a methodology for reviewing energy forecasts.
Dr. J.Edwards, Dr.P.Lindon & Dr. G.Williams	£22,153	(1 year, 5 months) from the Science Research Council for linear reluctance machines for traction and suspension of guided vehicles.	Dr.J.B.Pedley	£10,120	(3 years) from the United Kingdom Atomic Energy Authority for thermodynamic studies on nuclear materials.
Prof.B.Jayawant & Dr.P.Sinha	£78,730	(3 years) from the SRC for study of the electromagnetic levitation with linear induction motor drive.	TOTAL	£219,844	

IN BRIEF

CYCLISTS AND MOTORCYCLISTS

There has been an increase in the number of complaints from pedestrians who have been bumped into, or nearly



bumped into, by cyclists riding on University footpaths.

The problem was discussed by Site Amenities Committee earlier in the term, and it was agreed that as a commonsense safety measure, cycles should not be ridden on the footpaths.

The Site Amenities Committee also agreed that motor cyclists should be required to wear crash helmets when riding on campus roads.

Both these decisions are safety measures which stem from the University's responsibilities under the Health and Safety at Work Act. Both were endorsed by Community Services Committee at its meeting on November 22, and we hope all cyclists and motorcyclists will be willing to comply.

Secretary of Community Services

CRECHE CHRISTMAS BAZAAR

This Thursday, December 14, there will be a Grand Christmas Bazaar from 12 noon to 2 p.m. in the Refectory Lobby. It is in aid of the Creche.

NALGO A.G.M.

The annual general meeting of the local branch of Nalgo will be held this Thursday, December 14, at 1 p.m. in room 221, Institute of Development Studies building.

Sherry and mince pies will be served.



Un-Christmas Party on Saturday, January 6, 1979.

8 p.m. - midnight, Falmer Bar, Falmer House.

Bangers and mash. Disco.

£1 on the door.

FORMER SUSSEX STUDENTS ASSOCIATION

MEETING HOUSE CHRISTMAS APPEAL

There is still time to contribute to this year's Meeting House Christmas Appeal which hopes to raise £1,000 for Friends of SACHED (South African Committee for Higher Education).

SACHED provides educational opportunities normally denied to African students, and since 1964, Friends of SACHED in this country have supported its work by contributing to the SACHED Students' Assistance Fund.

It helps to tide individuals

over emergencies, for instance by paying course fees or transport, and it also helps train students in practical skills.

This may be your last chance to help. Under legislation becoming operative in 1979, remittances to SACHED from abroad are likely to be prevented. Contributions large or small can be given to Barbara Barber, Room 3, Meeting House; cheques should be made payable to "The University of Sussex."

Court

The Seventeenth Annual Meeting of the Court of the University will be held in the Meeting House at 11.15 a.m. this Friday, December 15.

The Court meets once a year to receive the audited accounts and a report on the University for the previous session.

It has some 200 members and includes MPs for the Sussex constituencies, local government and trade union representatives and others from many walks of life.

The Chancellor, Lord Shawcross, will chair the meeting.

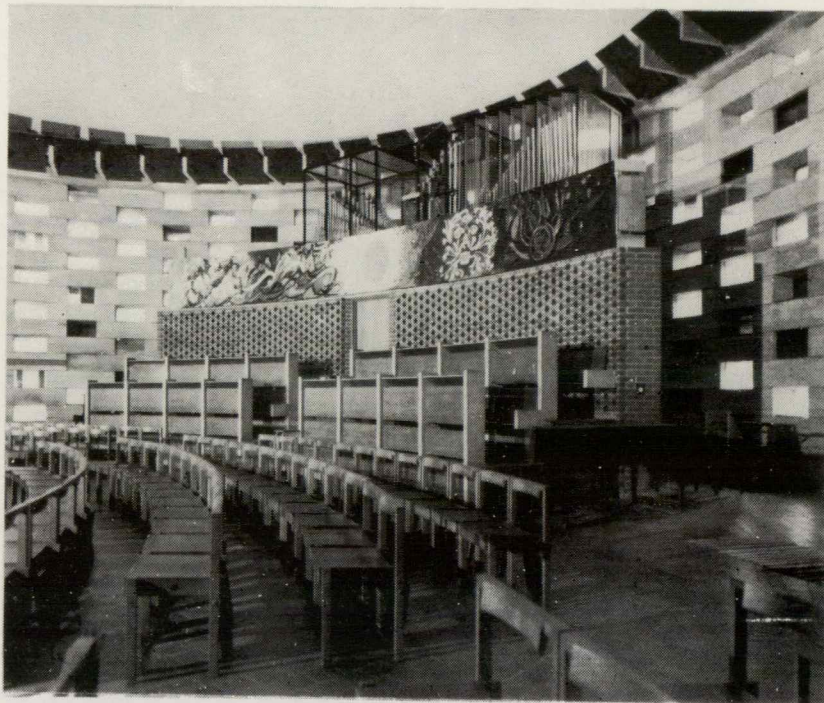
On this occasion, the meeting of the Court will be preceded by a service of dedication of the tapestry associated with the late Sir Sydney Caffyn.

PLEASE NOTE

CAR PARKING RESTRICTED: part of the Sussex House car park will be reserved this Friday for those attending Court.

DRIVERS WHO USUALLY LEAVE THEIR VEHICLES IN THE SUSSEX HOUSE CAR PARK ARE ASKED TO SEEK ALTERNATIVE PARKING PLACES ON THAT DAY.

JOHN PIPER TAPESTRY



The tapestry by John Piper which will be associated with the late Sir Sydney Caffyn, first Chairman of the University Council. The tapestry was placed in the Meeting House at the beginning of term and will be dedicated at a service in the Meeting House this Friday. During the service, the Chancellor of the University, Lord Shawcross, will unveil a commemorative plaque.

The tapestry takes as its theme Psalm 46 from which the University motto *Be Still and Know* is taken. It was completed by the Edinburgh Weavers and its commissioning was made possible by the generosity of private donors. If you have not already seen the tapestry, it is well worth a visit.

Do you remember this scene? Do you want to know what Sussex's first Vice-Chancellor designate thought of his new job, what Sir Basil Spence hoped to achieve with his award-winning design for Falmer House, and what students were like in the early 60's? Then read on



Last month's showing of films of the University from its earliest days was so successful that the Former Sussex Students Association and the Media Service Unit have arranged another film show for next week.

This will be held on Tuesday, December 19, at 2.30 p.m. in Lecture Theatre A1, Arts Building, and will last about one and a half hours.

This showing is intended primarily for all staff of the University and it is hoped that on this occasion there will be room for everyone who wishes to attend.

FSSA hopes to put on another show next term when more students will have the opportunity to attend.

Non-Academic Vacancies

The Establishment Office has issued the following current list of non-academic posts within the University which are to be filled. Job descriptions for all the posts listed are displayed on notice-boards. The list was compiled at December 6.

Resident Conductor	(c)	Gardner Centre
Clerks	(c)	Finance Office (2)
	(c)	Student Records Section (1 or 2)
	(n)	Information Office (3)
Secretaries	(c)	Estates and Maintenance (part-time, 1 or 2)
	(a)	School of European Studies (1 or 2)
	(b)	School of Engineering & Applied Sciences (2 posts, 2 and 3)
	(b)	School of Mathematical and Physical Sciences (1 post, 1, 2 posts 1 or 2)
	(c)	Science Policy Research Unit (2)
	(c)	Community Services (part-time, 1)
	(c)	Short Courses Programme Office (part-time 1 or 2)
Assistant to the Conference Officer	(c)	Conference Office (3)
Technician	(e)	School of Engineering & Applied Sciences (5)
Senior Technicians Electronics	(k)	School of Molecular Sciences (5)
	(e)	School of Engineering & Applied Sciences (2 posts, 5)
Graphics Design Technician	(f)	Media Service Unit (1B)
Research Technicians	(h)	School of Biological Sciences (2 posts, 3 and 4)
Mechanical Workshop Technician	(j)	School of Mathematical & Physical Sciences (5)
Library Staff Room Attendant	(d)	University Library (part-time)
General Domestic Assistant	(g)	Isle of Thorns
Domestic Bursar	(c)	Park Village
Grounds Foreman/woman	(c)	Isle of Thorns
Grounds Person	(c)	Isle of Thorns
Assistant Steward	(i)	Refectory

Information given after each post relates to the grade at which the vacancy will be filled.

The code given before each post indicates the person to whom applications should be sent:

- (a) Miss C.Pratt, Arts and Social Studies Office, Arts D.
- (b) Mr. M.D.Carr, Science Office, Sussex House.
- (c) Mr. C.R.Kelley, Establishment Office, Sussex House.
- (d) Mr. A.L.Pollard, Deputy Librarian, University Library.
- (e) Laboratory Superintendent, School of Engineering and Applied Sciences.
- (f) Media Service Unit, Education Development Building.
- (g) Business Manager, Refectory.
- (h) Mr. J.Burns, Laboratory Superintendent, School of Biological Sciences.
- (i) Catering Manager, Refectory.
- (j) Laboratory Superintendent, School of Mathematical and Physical Sciences.
- (k) Mr. P.J.Gilliver, Laboratory Superintendent, School of Molecular Sciences.
- (n) Miss C.Broadway, Sussex House.

Scholarship

EUROPEAN PARLIAMENT - ROBERT SCHUMAN
SCHOLARSHIPS 1979

Each year the European Parliament awards scholarships for research in subjects relating to the Community and to European integration.

The Robert Schuman scholarships were established by the European Parliament in memory of one of its most distinguished presidents and are awarded to students who should have completed a degree course at a university or have attended an institution of higher education for at least three years.

Scholarship holders are usually nationals of a member country of the Community. The normal duration of a scholarship is three months and the amount payable is Bfrs. 20,000 per month, payable monthly.

The holder of a scholarship studies at the European Parliament in Luxembourg under the supervision of a senior official of the Directorate General for Research and Documentation, and will be expected to complete one or more study projects.

There will also be the opportunity, in appropriate cases, to assist research projects of the Directorate General and the student will also be able to use the facilities of the Parliament's library, etc. There will also be opportunities to attend sessions of the Parliament in Strasbourg and to visit Brussels.

Some further details are available from the Personal Assistant to the Vice-Chancellor, Sussex House. Application forms from: Directorate General for Research and Documentation, European Parliament, PO Box 1601, Luxembourg.



Centre for
Continuing Education

UNIVERSITY SPECIAL LECTURE
KINGMAN BREWSTER, American
Ambassador to Britain, will
speak on "Can Society be
Kept Voluntary?"
at 5.30 p.m. on Tuesday,
January 23, 1979 in the
Molecular Sciences Lecture
Theatre.

Next term the Centre for Continuing Education hopes to provide a class in CREATIVE MOVEMENT. This would be for both men and women and would be held in the Meeting House Quiet Room on Tuesdays, 5.30 - 7.30 p.m. starting on January 16. The tutor, Mrs. Alicia Bonfiglioli, has vast experience of Ballet and Contemporary Dance. The fee for 10 meetings would be £4.00. If you are interested, please contact the Centre.

A second GREEK STUDY TOUR, to include Crete and Classical Greece, will take place from April 9 to 19, 1979. Fully inclusive fee (Thomas Cook Travel) £345. There will also be a weekend school at Stafford House Hassocks, on February 24 and 25, under the title GREECE - THE CLASSICAL PERIOD, ASPECTS OF ITS ART AND DRAMA. Fee £11 resident, £7.50 non-resident.

A weekend school on THE POETRY OF T.S.ELIOT & THE MUSIC OF IGOR STRAVINSKY will be held at the Isle of Thorns from January 19 to 21. Fee £13 resident, £9 non-resident. Applications by January 6.

Evening classes continuing on campus next term: COMPUTER PROGRAMMING, THE GERMAN NOVELLE IN THE 20th CENTURY, EUROPEAN LITERATURE & FILM, THE EARLY GREEKS, RUSSIAN LANGUAGE AND LITERATURE, ITALIAN LANGUAGE & LITERATURE, ANGLO-SAXON II, and OLD NORSE.

The Centre will also be running an evening class on MAKING A TV PROGRAMME. This will be held in the TV Studio in the Education Development Building on Wednesdays at 7.30 p.m. from January 17. The fee for 10 meetings is £4.

Further details of all these activities are available from the Centre for Continuing Education, Education Development Building.



OVER THE CHRISTMAS VACATION

UNIVERSITY CLOSURE

The University will be closed over the Christmas and New Year from Monday, December 25, 1978 to Monday, January 1, 1979, inclusive.

LIBRARY OPENING TIMES

Monday, December 18 to Friday, December 22: 9.00 a.m. - 5.30 p.m.

Monday, December 25 to Monday, January 1: closed.

Tuesday, January 2 to Friday, January 12: 9.00 a.m. - 5.30 p.m.

WEEKEND VACATION MEALS

Staff who have to be on duty in order to look after conferences on Saturday evening or Sunday, January 6 or 7, will be able to purchase lunch or dinner on those days.

They should apply to the Supervisor on duty on the preceding Friday lunch-time and will be given a ticket for a two-course meal at 75p, and will be told where they can take the meal and between which hours.

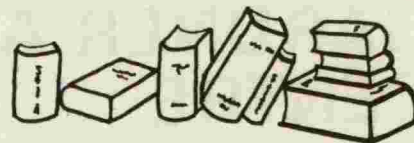
This is an experiment to see what demand there is for cooked meals from staff who come in to look after conferences.

.... AND NEXT TERM

The Spring Term begins on Monday, January 15 and ends on Saturday, March 24, 1979.



RECENT BOOKS



Recent and forthcoming publications of local interest:

COGNITION AND CATEGORIZATION edited by Eleanor Rosch of the University of California, Berkeley, and Dr. Barbara Lloyd, Reader in Social Psychology at Sussex. Published by Laurence Erlbaum Associates, £11.65.

DOS PASSOS AND THE FICTION OF DESPAIR is by Iain Colley, who graduated as a mature student from Sussex. Macmillan, £8.95.

DOSTOEVSKY'S "CRIME AND PUNISHMENT": MURDER AS PHILOSOPHIC EXPERIMENT by Professor A.D. Nuttall is the latest volume in the Text and Context series published by Sussex University Press. Cloth £3.50, paperback £1.75.

ELECTRON MICROSCOPY AND CYTOCHEMISTRY OF PLANT CELLS edited by Dr. John Hall of the School of Biological Sciences. Published by Elsevier/North Holland at £50.90.

THE MEDITERRANEAN CHALLENGE: I, contains monographs by Michael Leigh and Nicholas van Praag and is No. 2 in the Sussex European Papers series published by the Sussex European Research Centre. Price £2.00.

NEOCOLONIAL IDENTITY AND COUNTER CONSCIOUSNESS: ESSAYS ON CULTURAL DECOLONISATION by Renato Constantino has been edited, with a 23-page introduction, by Professor Istvan Meszaros. Merlin Press, £3.00.

PHYSICAL SCIENCE TECHNIQUES IN OBSTETRICS AND GYNAECOLOGY edited by Professor M.M. Black, formerly Chairman of the Graduate Division of Biomedical Engineering (now Professor of Medical Physics at Sheffield) and Dr. M.J. English, Research Fellow in Biomedical Engineering. Published by Pitman Medical at £10.00.

ART, AN ENEMY OF THE PEOPLE by Roger L. Taylor, Lecturer in Philosophy, in the "Philosophy Now" Series edited by Professor Roy Edgley. Published by Harvester Press, £3.50 paperback.

The Bookshop now has a fine display of some of the very good books available this Christmas as presents for family and friends. Wrapping paper, calendars, Christmas cards and Book Tokens are also available.

Three popular reference books are just out in new editions: WHITAKERS ALMANACK 1979 at £5.75, WRITERS' AND ARTISTS' YEARBOOK 1979 at £2.25 and the 25th edition of THE GUINNESS BOOK OF RECORDS at £3.95.

AVAILABLE FROM

SUSSEX UNIVERSITY BOOKSHOP

UNIVERSITY ON THE AIR

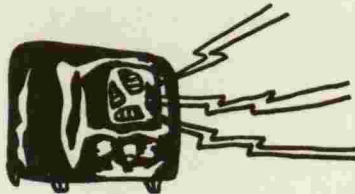
For a six-month experimental period from February 1, the University will be able to broadcast on Radio Brighton direct from the studio in the Education Development Building.

The University will participate in an experiment in community radio which entails the production of one hour of broadcasting per week by the University and the Polytechnic, and one hour by the Association of Radio Brighton Community Broadcasters.

The University is able to take part in the experiment as a result of the introduction of a direct line from the studio

to Radio Brighton.

Programmes will be prepared at the University and members of



the University involved in the production will not need to

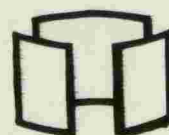
visit the Radio Brighton studios.

Some interviews for news items may also be transmitted from the studio, but for these items a Radio Brighton reporter would be involved.

Dr. Brian Smith (Physics) will co-ordinate the University programmes which it is hoped will include items related to research, extracts from open lectures and concerts, and discussion programmes.

If you have any ideas for all or part of a programme, please contact Dr. Smith. He will be pleased to hear from you.

GARDNER ARTS CENTRE



The merry band of Thespians adorning this page are the company of A CHRISTMAS CAROL who, even as you read, are in their final dress rehearsals preparing for an opening performance this Friday, December 15.

Each Christmas show (this is our sixth) has so far succeeded in breaking the previous box office record and A CHRISTMAS CAROL looks like being no exception.

Advance sales are currently exceeding those for last year's GINGERBREAD MAN and, with slightly more performances this year, we look set for a very happy entry into the New Year.



I need hardly explain the story, but I can tell you that, being set in London in 1860, the play has given our designer, Graham Brown, a wonderful opportunity to



produce some startling visual effects, and with the direction in the capable hands of Patrick Lau, I don't think any of you need worry about being disappointed by this year's show.

It runs until January 13 and there are plenty of matinees as well as evening performances. The full schedule is available at the box office.



Patrick Lau will not be having much of a break over Christmas, as he goes into rehearsals early in January for our first major attraction for next term which is a revival of Alan

Ayckbourn's comedy JUST BETWEEN OURSELVES.

We shall also be having visits from the Cambridge Theatre Company, and the Young Vic, and concerts will include piano recitals by Jorge Demus, and Clifford Curzon, and an evening with singers from the Welsh National Opera.

All these events will be detailed in our new Diary of Events which will be available, and sent out to everyone on our mailing list, shortly after Christmas.



Meanwhile, in the Art Gallery, our Christmas exhibition of Textiles and Ceramics will open tomorrow (December 13) and run until January 6.

Nigel Stannard,
Administrative
Director.

MESSIAH SING-IN

The annual Messiah Sing-In will be held tomorrow, December 13, at 5 p.m. in the Meeting House. Everyone is welcome to come and join in.

THE MORE IT SNOWS

An exhibition to commemorate 50 years of The House at Pooh Corner. In the Library, from December 4 to January 12, during normal Library opening hours.



The more it SNOWS-tiddely-pom
The more it GOES-tiddely-pom
The more it GOES-tiddely-pom
On snowing.

The House at Pooh Corner

