

This email is being sent to all staff



This is Sussex

Our news, our stories, our people

Friday 6 January 2023



Our community

[A knighthood and honours from King for University community](#)



Inclusive Sussex

[Launch of a new Equality and Inclusion Calendar for 2023](#)



Sussexsport

[Try January - get active, be mindful, try new things](#)

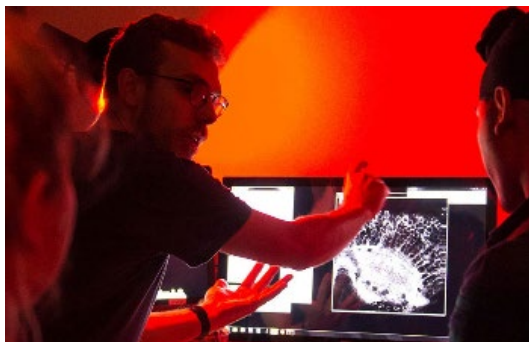


Book now

[Have your say on reducing meat demand on campus \(12 January\)](#)

2023 events

There are some events coming up in 2023 that will help you find out about key developments at Sussex, and how we are working together to help make the University a great place to work.



The first Research with Impact forum of 2023 takes place on Wednesday 18 January. [Book now](#) to hear from speakers such as Anil Seth and Louise Serpell about neuroscience research at Sussex.



The VC Open Forum will take place on Tuesday 7 February from 1.30 - 3pm. This will be an [in-person event](#) in the Attenborough Centre auditorium, which will also be [livestreamed](#) for a remote audience.



The next PS Bigger Picture event for Professional Services staff hosted by Tim Westlake will be on Wednesday 29 March. Register to attend [in person](#) or [online](#).



After a hugely successful [event](#) with Dan Gillespie Sells in November, watch this space for news of more Inclusive Sussex: In Conversation events to come.

Cost of living



Considering new year's resolutions? The University's £3,000 [Cycle to Work](#) limit provides you a range of electric bike options, with repayments spread over a period of up to two years.



If you're bargain hunting in the sales, remember that our staff discounts provider, [Reward Gateway](#), offers discounts on many brands and can save you money on your supermarket shops and elsewhere.



All University staff who use display screen equipment are entitled to a [free eye test](#) every two years, not twice a year as previously stated. Sussex may also fund a pair of glasses up to the value of £45 if required solely for screen work.

Your development



In this week's [Development update](#), find out about resources available to help plan your personal development, including the spring term workshop calendar.



[Book now](#) for online information sessions on 11 or 24 January focusing on Coaching, Leadership and Management, or Senior Leader apprenticeships.

Must-read research and other campus news

Our community

[Annual leave purchase scheme window open until 28 February](#)

Your development

[New year's resolution - learn a language! Enrolment now open for 12-Week Language Short Courses](#)

Transport

[Campus works impacting roads, access and transport](#)

[Other recent staff news](#)

Snapshot



Warnham local nature reserve, Horsham

About *This is Sussex*

The weekly *This is Sussex* is produced by the Internal Communications team and is intended for all current staff and postgraduate researchers at the University of Sussex.

For advice on ways to tell people about your news or story ideas, please email internalcomms@sussex.ac.uk.



Sent by

Internal Communications, University of Sussex ..