

Staff Bulletin

THE STAFF NEWSLETTER OF THE UNIVERSITY OF SUSSEX
23 AUGUST 2019

In this issue

- Pensions: Update on USS pension talks
- Appointment: Sussex appoints new Director of Estates, Facilities and Commercial Services
- Learn to Transform: Learn to record your lectures on Panopto - training now live
- This Sussex Life: Ella Beales, Mass Observation archive volunteer: "This is the history I enjoy"
- Build on Strengths: Improvements to the way you get help from ITS
- Life Sciences: Queen bees face increased chance of execution if they mate with two males rather than one
- Life Sciences: Aggressive brain tumour could be diagnosed with simple blood test
- Business School: No-deal chaos to hit food businesses trading across the Irish border, warn experts
- Parking: Campus works impacting roads, access and parking
- Transport: Take part in Cycle September - the Global Bike Challenge

You can also read this newsletter on the *Bulletin* website.

PENSIONS: UPDATE ON USS PENSION TALKS

This week has seen an important development in the USS pension valuation.

[Read more](#)

USS

APPOINTMENT: SUSSEX APPOINTS NEW DIRECTOR OF ESTATES, FACILITIES AND COMMERCIAL SERVICES

The University of Sussex has appointed Robert Hutton as Director of Estates, Facilities and Commercial Services.

[Read more](#)



LEARN TO TRANSFORM: LEARN TO RECORD YOUR LECTURES ON PANOPTO - TRAINING NOW LIVE

Panopto will revolutionise the way we capture, deliver and archive content and comes with a host of features that will open up new possibilities for teaching and greatly enhance the experience of our students.

[Read more](#)



THIS SUSSEX LIFE: ELLA BEALES, MASS OBSERVATION ARCHIVE VOLUNTEER: "THIS IS THE HISTORY I ENJOY"

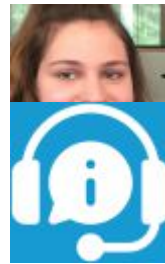
Sussex graduate Ella Beales is helping to catalogue and digitise Mass Observation, a unique collection of writings of everyday life by volunteers.

[Read more](#)

BUILD ON STRENGTHS: IMPROVEMENTS TO THE WAY YOU GET HELP FROM ITS

Getting help from IT Services is about to get quicker, more efficient and more transparent.

[Read more](#)



LIFE SCIENCES: QUEEN BEES FACE INCREASED CHANCE OF EXECUTION IF THEY MATE WITH TWO MALES RATHER THAN ONE

New research shows that queen stingless bees face an increased risk of being executed by workers if they mate with more than one male.

[Read more](#)



LIFE SCIENCES: AGGRESSIVE BRAIN TUMOUR COULD BE DIAGNOSED WITH SIMPLE BLOOD TEST

New research by Sussex scientists could be the first step towards developing a blood test to diagnose Glioblastoma.

[Read more](#)



BUSINESS SCHOOL: NO-DEAL CHAOS TO HIT FOOD BUSINESSES TRADING ACROSS THE IRISH BORDER, WARN EXPERTS

Crashing out of the EU without a deal could cause some Irish food businesses to go out of business within days.

[Read more](#)



PARKING: CAMPUS WORKS IMPACTING ROADS, ACCESS AND PARKING

Spaces will be closed from 2 September in Sussex House car park (P4) to facilitate the installation of new fencing.

[Read more](#)



TRANSPORT: TAKE PART IN CYCLE SEPTEMBER - THE GLOBAL BIKE CHALLENGE

Sussex staff will join other individuals and their workplaces across the country and around the world next month to raise the profile of cycling and help get more bums on bikes.

[Read more](#)



EVENTS NEXT WEEK: OUR TOP PICKS FOR STAFF

Sussexsport staff rounders tournament
Wednesday 28 August - 16:00 until 18:30 - Falmer Sports Complex

Introduction to Panopto
Tuesday 27 August - 14:00 until 14:30 - Online

Introduction to Panopto
Thursday 29 August - 14:00 until 14:30 - Online

[View all Sussex events.](#)

ABOUT THE STAFF BULLETIN

The weekly *Staff Bulletin* is produced by the Internal Communications team and is intended for all current staff and postgraduate researchers at the University of Sussex. The next issue will be out on 30 August.

For advice on ways to tell people about your news or story ideas, please E
internalcomms@sussex.ac.uk.



[SussexUniStaff on Twitter](#)

Internal Communications team
Communications and External Affairs
Sussex House
T (01273) (67)8888
E internalcomms@sussex.ac.uk