



UNIVERSITY  
OF SUSSEX

# Staff Bulletin

THE STAFF NEWSLETTER OF THE UNIVERSITY OF SUSSEX  
22 MARCH 2019

## In this issue

- Sussex named among most international universities in the world
- Build on Strengths: Business as usual on campus for SEF and its staff
- Learn to Transform: University tour strengthens long-standing relationship with Study Group
- Build on Strengths: Campus bookshop to close
- Engage for Change: Book now for local election question time at Sussex
- This Sussex Life: "Isolation and loneliness are among the big issues that Citizens UK could address" - Aisling Murray, USSU Society & Citizenship Officer
- Spotlight: Dr Charlotte Rae
- Transport: On your bike for Ride to Work Week
- Transport: Colourful design gets the student vote for campus bus route
- Parking: Campus works impacting roads, access and parking

You can also read this newsletter on the *Bulletin* website.

### SUSSEX NAMED AMONG MOST INTERNATIONAL UNIVERSITIES IN THE WORLD

The University of Sussex has been named among the top 25 most international universities in the world in a new sector ranking.

[Read more](#)



### BUILD ON STRENGTHS: BUSINESS AS USUAL ON CAMPUS FOR SEF AND ITS STAFF

It's business as usual for staff in Sussex Estates and Facilities (SEF) after the news last week that Interserve PLC had gone into administration.

[Read more](#)



### LEARN TO TRANSFORM: UNIVERSITY TOUR STRENGTHENS LONG-STANDING RELATIONSHIP WITH STUDY GROUP

The University has further strengthened its long-running links with Study Group thanks to a well-received visit to campus earlier this month.

[Read more](#)

### **BUILD ON STRENGTHS: CAMPUS BOOKSHOP TO CLOSE**

The vacated area will be returned to the Library for use by students. An online store, linked to suggested readings, will be available for students.

[Read more](#)

### **ENGAGE FOR CHANGE: BOOK NOW FOR LOCAL ELECTION QUESTION TIME AT SUSSEX**

Ahead of the 2 May local elections in Brighton & Hove, the University and the Politics Society are hosting a debate involving candidates.

[Read more](#)

### **THIS SUSSEX LIFE: "ISOLATION AND LONELINESS ARE AMONG THE BIG ISSUES THAT CITIZENS UK COULD ADDRESS" – AISLING MURRAY, USSU SOCIETY & CITIZENSHIP OFFICER**

Aisling Murray is USSU's Society & Citizenship Officer and is also a member of the newly founded Brighton and Hove chapter of Citizens UK.

[Read more](#)

### **SPOTLIGHT: DR CHARLOTTE RAE**

Spotlight on Dr Charlotte Rae, Research Fellow at the Brighton and Sussex Medical School.

[Read more](#)

### **TRANSPORT: ON YOUR BIKE FOR RIDE TO WORK WEEK**

The theme for Ride to Work Week from 25-31 March is Go Dutch – so cycle to work for the chance to win an electric cargo bike or a trip to Amsterdam.

[Read more](#)

### **TRANSPORT: COLOURFUL DESIGN GETS THE STUDENT VOTE FOR CAMPUS BUS ROUTE**

An eye-catching new bus aims to promote positivity on Brighton & Hove Buses' route 25 to the University of Sussex campus.

[Read more](#)

### **PARKING: CAMPUS WORKS IMPACTING ROADS, ACCESS AND PARKING**

Biology Road car park must be vacated by 5pm today (Friday 22 March), with 20 spaces to be closed until the end of the year.

[Read more](#)

### **LISTENING EVENTS FOR BRIGHTON AND HOVE CITIZENS: 25 AND 27 MARCH**



Share your thoughts and concerns about living in Brighton and Hove, and help shape the work of the newly-founded Brighton and Hove Chapter of Citizens UK. These informal roundtable discussions will provide useful insights ahead of a Citizens Assembly which will be taking place in April.



Monday 25 March, 12-1pm, Meeting House

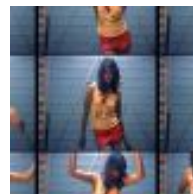
Wednesday 27 March, 3.30pm-4.30pm, Meeting House

[Read more](#)

### **SUSSEX CRAFT FAIR - MOTHERS' DAY SPECIAL: 27 MARCH / 12:00 - 14:00 / JUBILEE ATRIUM**

Looking for an unusual gift? Come along to the Sussex Craft Fair Mothers' Day Special where you'll find handmade cards, gifts, goodies and much more!

[Read more](#)



### **OUR LEADING RESEARCH AND OTHER NEWS STORIES**

Geography: Sussex researchers join international project to help 11 million Thai people

Life Sci: Sussex researcher training 'para-ecologists' to protect the rainforest

Psychology: Depression in your twenties linked to memory loss in your fifties, find Sussex psychologists

Research: Two Sussex academics made Fellows of the Academy of Social Sciences

Physics: Materials Physics Research Fellow selected to attend 69th Lindau Nobel Laureate meeting

Our Community: Sussex researchers portrayed in photo exhibition at Brighton station



### **EVENTS NEXT WEEK: OUR TOP PICKS FOR STAFF**

One World Week 2019 - Friday  
Friday 22 March - 8:00 until 23:45 - Campus-wide

Funeral Prayer in Absentia for New Zealand attack victims  
Friday 22 March - 15:30 until 16:30 - Library Square

Listening event for Citizens UK, Brighton  
Monday 25 March - 12:00 until 13:00 - Meeting House

Travel the World - V, 45 Minutes of Music, D'Arcy Trinkwon (University Organist)  
Wednesday 27 March - 12:00 until 12:45 - Meeting House, Chapel

Sussex Craft Fair - Mothers' Day Special  
Wednesday 27 March - 12:00 until 14:00 - Jubilee atrium

Introduction to REF2021  
Wednesday 27 March - 14:00 until 16:00 - Fulton 213

Listening event for Citizens UK, Brighton  
Wednesday 27 March from 15:30 until 16:30 - Meeting House

Sounds from Space - a concert by the University of Sussex Symphony Orchestra  
Saturday 30 March - 19:30 until 21:45 - Attenborough Centre for the Creative Arts

[View all Sussex events.](#)

## **ABOUT THE STAFF BULLETIN**

The weekly *Staff Bulletin* is produced by the Internal Communications team and is intended for all current staff and postgraduate researchers at the University of Sussex. The next issue will be out on 29 March.

For advice on ways to tell people about your news or story ideas, please E [internalcomms@sussex.ac.uk](mailto:internalcomms@sussex.ac.uk).



[SussexUniStaff on Twitter](#)

---

Internal Communications team  
Communications and External Affairs  
Sussex House  
T (01273) (67)8888  
E [internalcomms@sussex.ac.uk](mailto:internalcomms@sussex.ac.uk)