

Fire Evacuation Plan

Silverstone Level 2



University of Sussex



Welcome to our Department

Please take a moment to familiarise yourself with the exit routes and fire procedures should you need to evacuate quickly. If the alarm does sound, leave the building by the nearest exit.







Fire Evacuation Plan

Silverstone Level 2



Welcome to our Department

Please take a moment to familiarise yourself with the exit routes and fire procedures should you need to evacuate quickly. If the alarm does sound, leave the building by the nearest exit.

-  Fire Call Point
-  Fire Extinguisher
-  Main Evacuation Routes
-  Evacuation Route for Disabled People
-  Refuge
-  Toilets
-  Disabled Toilets located on Level 1

Fire Evacuation Plan

Silverstone Level 2



Welcome to our Department

Please take a moment to familiarise yourself with the exit routes and fire procedures should you need to evacuate quickly. If the alarm does sound, leave the building by the nearest exit.

-  Fire Call Point
-  Fire Extinguisher
-  Main Evacuation Routes
-  Evacuation Route for Disabled People
-  Refuge
-  Toilets
-  Disabled Toilets located on Level 1

Fire Evacuation Plan

Silverstone Level 2



Welcome to our Department

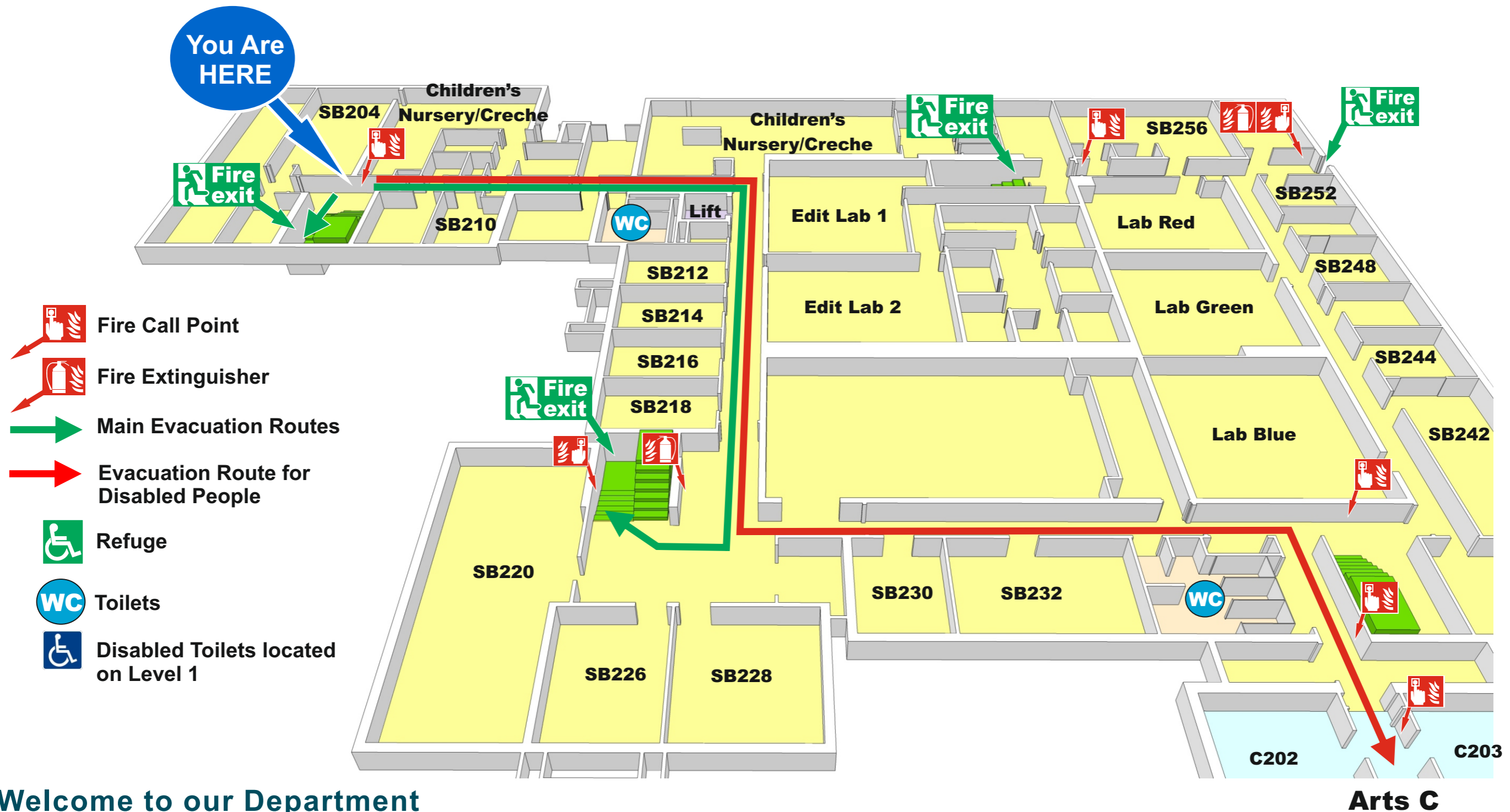
Please take a moment to familiarise yourself with the exit routes and fire procedures should you need to evacuate quickly. If the alarm does sound, leave the building by the nearest exit.

Health, Safety & Wellbeing Office

-  Fire Call Point
-  Fire Extinguisher
-  Main Evacuation Routes
-  Evacuation Route for Disabled People
-  Refuge
-  Toilets
-  Disabled Toilets located on Level 1

Fire Evacuation Plan

Silverstone Level 2



Welcome to our Department

Please take a moment to familiarise yourself with the exit routes and fire procedures should you need to evacuate quickly. If the alarm does sound, leave the building by the nearest exit.