

Fire Evacuation Plan



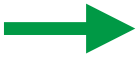




Medical Teaching Building Level 1

You Are
HERE



Welcome to our Department

Please take a moment to familiarise yourself with the exit routes and fire procedures should you need to evacuate quickly. If the alarm does sound, leave the building by the nearest exit.

-  Fire Call Point
-  Fire Extinguisher
-  Main Evacuation Routes
-  Evacuation Route for Disabled People
-  Refuge
-  Toilets
-  Disabled Toilets

Fire Evacuation Plan

Medical Teaching Building Level 2



University of Sussex



Welcome to our Department

Please take a moment to familiarise yourself with the exit routes and fire procedures should you need to evacuate quickly. If the alarm does sound, leave the building by the nearest exit.

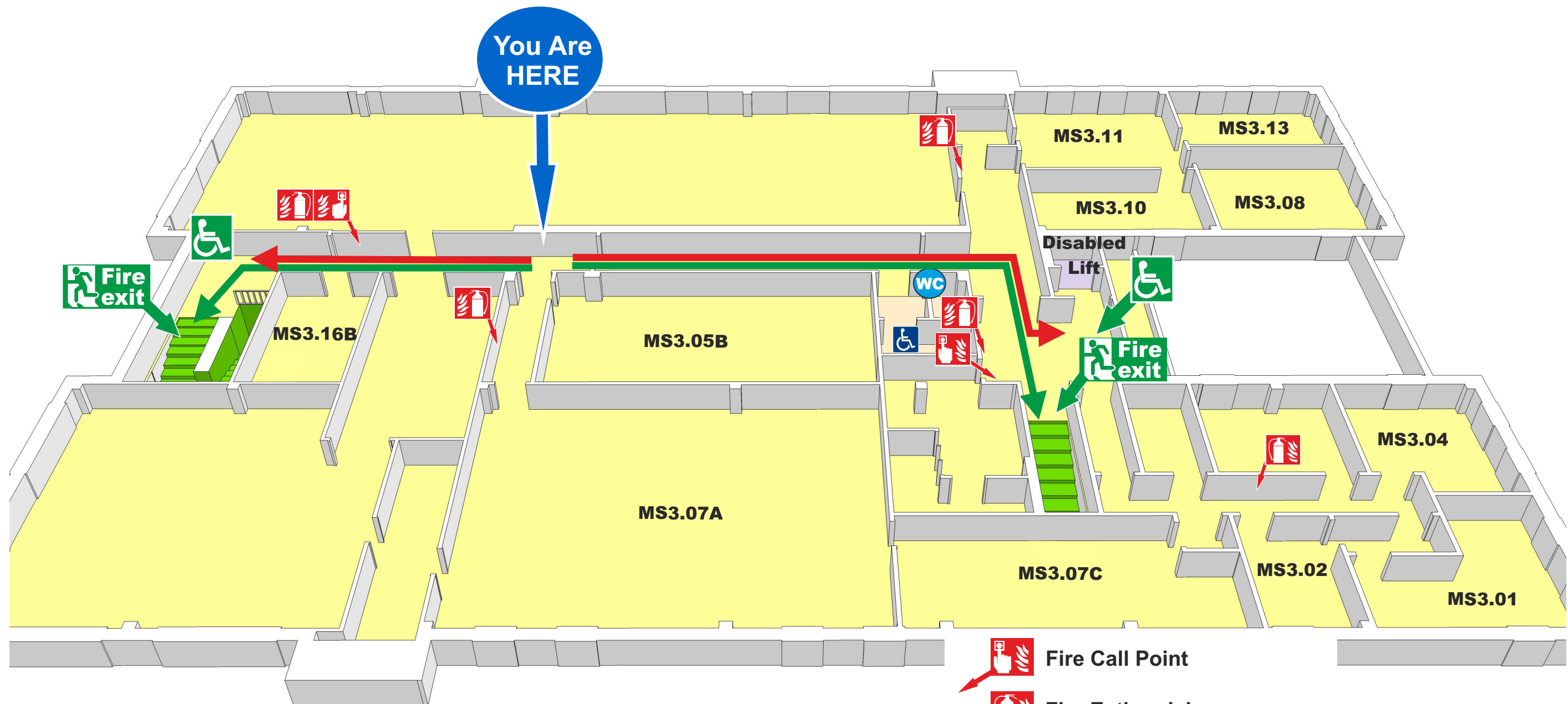
Health, Safety & Wellbeing Office

- Fire Call Point
- Fire Extinguisher
- Main Evacuation Routes
- Evacuation Route for Disabled People
- Refuge
- Toilets
- Disabled Toilets



Fire Evacuation Plan

Medical Teaching Building Level 3



- Fire Call Point
- Fire Extinguisher
- Main Evacuation Routes
- Evacuation Route for Disabled People
- Refuge
- Toilets
- Disabled Toilets

Welcome to our Department

Please take a moment to familiarise yourself with the exit routes and fire procedures should you need to evacuate quickly. If the alarm does sound, leave the building by the nearest exit.