

Anthropology of Migration

Year 3 Advanced Option





Weekly Topics

- **Week 1 Introduction:**
Migration and Mobility
- **Week 2 Diaspora and Transnationalism**
- **Week 3 Borders, Society and the State**
- **Week 4 Migration and Work**
- **Week 5 Kinship and Transnational Families**
- ***Week 6 Consolidation week***



- ***Week 7 Migration Walk; first assessment due***

Week 8 Identity and Belonging

- **Week 9 Media and Material Cultures**
- **Week 10 Children and Youth Mobilities**
- **Week 11 Retirement and Lifestyle Migration**

Domestic Workers
help build families
We love and need
our own families too



NEARLY ONE IN EVERY FIVE DOMESTIC WORKERS
IS AN INTERNATIONAL MIGRANT.

Course Format

- the course format consists of weekly 3-hour sessions, which include a lecture/overview of the topic and a seminar
- the seminar will feature exercises, student-led workshops, group discussions, and visual material



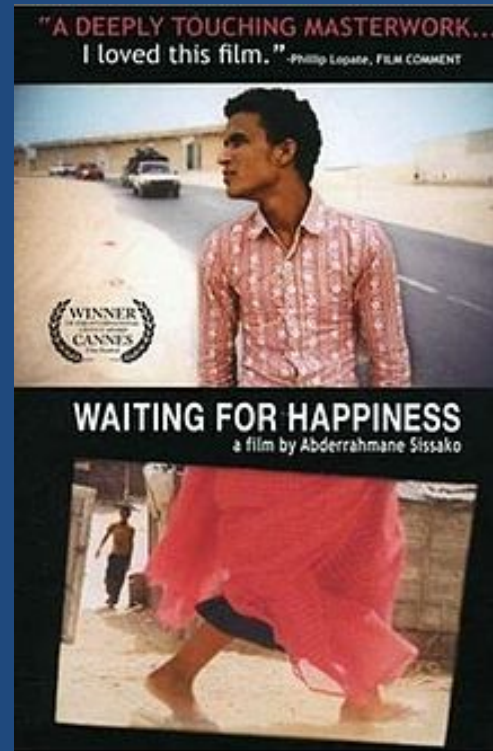
“Why are white people expats when the rest of us are immigrants? Surely any person going to work outside their country is an expatriate? But no, the word exclusively applies to white people”



<https://www.theguardian.com/global-development-professionals-network/2015/mar/13/white-people-expats-immigrants-migration>

Relevant Films

- *Last Train Home*
- *Waiting for Happiness*
- *Ilo Ilo*



Assessment:

- Portfolio consisting of:
- two concepts notes of 1000 words
- two blogs of 1000 words each

- ***Due in week 7 and 11 of term***

Learning Outcomes:

- familiarity with some of the major theoretical approaches to migration and mobility
- awareness of how different groups conceptualize and experience migration
- understanding of the methodological issues of researching and representing migration and mobility
- skill to critically analyse and assess anthropological approaches to migration
- ability to construct and present arguments about migration and society in both written and verbal form, using theoretical and empirical material



Course Convenor: Meike Fechter
Dept of Anthropology



My research concerns mobility in all forms, including privileged migration and expatriates; aid workers and development; its intersections with gender and kinship.

My regional area of interest is Southeast Asia.

Contact info: a.fechter@sussex.ac.uk

- If you would like to find out more, please email me for the complete reading list or drop in to discuss