

# The University of Sussex

## BULLETIN

Published by the Information Office



April 23, 1987

### TALKS ON STUDENTS' UNION CHANGES BEGIN

A Council Sub-Committee on Student Union Organisation this week commences its task of examining proposals for changes in the Students' Union Ordinance under the Chairmanship of Professor John Murrell.

A University Discussion will be held in the MOLS lecture theatre on Wednesday, April 29, at 4 p.m., and a letter is being circulated among students detailing the structure of the Sub-Committee and the functions it intends to fulfill.

The letter invites the chairs of a variety of groups on campus to submit their views and states that "Individuals are also welcome to send us their views in writing". The Sub-Committee hopes to take evidence in the first few weeks of term and will submit a report to the Council in June.

The letter states that the Sub-Committee will report to Senate and Council in June, but that "it is too early to speculate on the nature of the report, but we are seeking a consensus within the University".

It goes on to outline the current structure of the Students' Union decision making process and notes that "an important objective of the Sub-Committee will be to find a constitution which maximises the support for Union activities by the membership as a whole".

The Sub-Committee proposes to hear the views of School Joint Committees, Union Federations, Clubs and other organisations as well as any individuals, and the letter states that it "hopes to receive support from the whole University for its task".

A referendum is to be held on campus in week 7 to consult the views of the student body as a whole. Details of the referendum are given in the letter.

### THE SUB-COMMITTEE'S TASK

The Sub-Committee, under the Chairmanship of Professor John Murrell, Pro-Vice-Chancellor (Science) was set up by the University Council at its meeting in March, when it confirmed the timetable for discussion and consultation leading to its stated intention of passing a revised



Professor John Murrell

Ordinance on the Students' Union in June.

The Sub-Committee's task is to examine proposals for changes in the Ordinance on the Students' Union, and to consult with members of the University as to the form a new Students' Union constitution should take. The Sub-Committee will be seeking the views of members of the University during the first half of this term and will use the second half to assess the support for any changes that may be put forward.

Those invited to serve on the Sub-Committee, all of whom are Council members, are Mr Neil Jarvis (President of the Students' Union), Professor Tony McCaffery (Dean of MOLS), Mr Michael Hawkins (ENGAM), and two lay members, Councillor Joe Townsend, and Mr Tony de Boer.

The Sub-Committee intends to consult all groups on campus such as School Joint Committees, Union Federations and Clubs, and will also receive written submissions from any individual. It will report to Senate and Council at the end of term, with the aim of proposing a constitution which maximises the support for Union activities among all its members.

Council has agreed that discussions on changes to the Students' Union constitution should take place on the basis of a paper considered at its March meeting, which advocated four points of principle:

- the governing body of the SU should be a Council elected for a full academic

### SENATE CONDEMNS OCCUPATIONS

Senate has condemned the violence to people and property in the occupation of Sussex House in January, and declared all occupations of University buildings "totally unacceptable" whether or not they involve violence and damage.

Two resolutions were passed at the March meeting of Senate. The first states: "This Senate condemns the violence perpetuated against both individuals and property during the recent occupation of Sussex House".

The second states: "This Senate regards any occupation which disrupts the normal working of any part of the University as totally unacceptable even if such an occupation were to be carried out without damage to property or explicit violence towards the normal occupiers of the areas concerned".

year and representative of the Schools of Studies and federations and clubs of the Union.

- Union General Meetings should be consultative and, apart from scheduled meetings, called only by resolution of the Union Council.

- Certain decisions of the Union Council - such as occupations and other forms of 'direct action' - should need to be confirmed by a subsequent postal ballot of all Students' Union members.

- The Students' Union budget should be divided into three parts relating to general Union activities, to the permanent staff of the Union, and to sports, music, arts and other cultural activities. The three parts should be separately funded by the University Council and any virement between them should need Council approval.

The intention of the changes, the paper says, is to ensure that the Students' Union is "governed in a way that is less volatile and potentially unstable, that safeguards the legitimate expectations of the majority of its members for support of their activities and that minimises the threat of disruption of the University's life and work".



## NUS MOTION SUPPORTS SUSSEX UNION

The National Union of Students passed a motion at its conference at Blackpool in March on the issue of Students' Union autonomy which expresses support for the Students' Union at Sussex in its campaign against the changing of its constitution.

The motion accuses the Vice-Chancellor and Chairman of Council of "attacking the right of the students to organise to control their affairs and to take action defending students' rights", by proposing to change the Ordinance on the Students' Union.

The motion instructs the NUS National Executive to "launch a national campaign in defence of Students' Union autonomy" and to "give whatever assistance is requested by Sussex to build the campaign".

The NUS national campaign on "Student Union Autonomy" will concentrate on media coverage and the co-ordination of campaigns at institutions such as Sussex and Middlesex Polytechnic. As part of the campaign, the NUS has stated that "Occupations are a legitimate tactic in fighting the imposition of cuts by college authorities", and has pledged support for "victimised unions and individuals".

The NUS is to set up a fund for the Sussex Union - to which £1,000 has already been given, - to write letters to the Vice-Chancellor of Sussex, to organise a speaking and fund raising tour and to mount a national demonstration at Sussex.

The NUS decision makes it likely that the University campus will be the scene of at least one major demonstration involving students from other institutions, as well as Sussex, during the Summer Term.

Given the NUS re-affirmation of support for occupations, there is concern that such a demonstration on campus could lead to a further occupation of Sussex House with inevitable disruption to the work of offices responsible for administering Final Examinations and Graduation.

## PEOPLE

### CONGRATULATIONS!

Sussex House porter Bill Green was awarded the Imperial Service Medal last month. Bill, who served for 25 years in the Prison Service and for five years in the Army, received his medal at a ceremony at Lewes Prison on March 12.

The Imperial Service Medal is awarded to people in the uniformed grades of the Civil Service who are eligible to be considered for the medal after 30 years' service to the Crown.

Bill was a Prison Officer at Dartmoor for five years before coming to Lewes where he served for 20 years until his retirement last year when he joined the staff of the University.



*Sir Richard Attenborough*

### HONORARY DEGREES

The University's Pro-Chancellor, the actor and director Sir Richard Attenborough, is one of five people to be awarded honorary degrees at the Summer Graduation Ceremony on July 7.

At the ceremony, to be held at the Brighton Centre, Sir Richard will be awarded the honorary degree of Doctor of Letters, as will Sir Run Run Shaw, the education benefactor and Hong Kong film and TV industry mogul.

Sir Denys Wilkinson, FRS, who retires as Vice-Chancellor this summer, is to be awarded an honorary Doctorate of Laws. Also to receive an Hon.LLD is Professor Glanville Williams, formerly Rouse Ball Professor of English Law at Cambridge.

The fifth honorary graduand also comes from Cambridge: Professor Donald Lynden-Bell, FRS, who is Professor of Astrophysics and Director of the Institute of Astronomy, Cambridge, is to be awarded an Hon.DSc.

### BARON TRAFFORD OF FALMER

The Chairman of Council, one of 11 new peers announced by Downing Street in February, has taken the title of Baron Trafford of Falmer. He was introduced into the House of Lords on April 7 by the University's former Chancellor, Lord Shawcross, and former Treasurer, Lord Gibson.



*Bill Green (left) being presented with his medal by the Regional Director of Prisons, Mr. Colin Honey.*

### TO CHAIR AT GLASGOW

Dr. Peter Gawthrop of the School of Engineering and Applied Sciences took up a Chair in Mechanical Engineering at Glasgow University on April 1. Dr. Gawthrop is the 14th member of EAPS faculty to be promoted in this way.

### LIBRARIAN AT BRADFORD

Dr. Malcolm Stevenson, a former Sub-Librarian at Sussex, is the new Librarian at the University of Bradford. He was most recently Deputy Librarian at Leeds.

## BOOST FOR JUBILEE SCHOLARSHIP FUND

The Jubilee Scholarship Fund for Handicapped Students has received another boost with a £1000 donation from the Southern Sound Charitable Trust.

The Trust, based at the local commercial radio station in Portslade, was set up three years ago to provide support for local charities and is funded by radio appeals and an auction organised by Southern Sound.

Two types of charities are of special interest to the Southern Sound Charitable

Trust; those concerned with youth and music, and those involving access for the disabled. For this reason the Jubilee Scholarship Fund has received a sizeable donation. £10,000 was donated by the trustees, in total, in 1986.

Other recent additions to the Jubilee Scholarship Fund include a further payment from Brighton Borough Council, which helped to set up the fund last year and is running it jointly with the University. The Fund has received £8000 from the winding up of the Mayor of Brighton's

1981 Trust which has realised its aim of improving access to the seafront for disabled people.

Sizeable contributions have also come from Gatwick Airport Ltd who donated £500, the English Language Centre with a gift of £250, and Mid-Sussex District Council who have given £100 to the Fund. Smaller gifts from local people and from former students continue to be received and are all proving valuable, with the Fund total now over £34,000.



## ENGINEERING INITIATIVES LAUNCHED IN LOCAL COLLEGES

A novel scheme aimed at tackling the national and local shortages of students taking engineering degrees, by bringing more local school children to study at Sussex, is being set up by the School of Engineering and Applied Sciences.

The scheme, which also hopes to tackle the problems of the divergence of syllabuses for 'A' Level Maths and Physics and declining standards of school teaching in these subjects, will establish close links with local Technical Colleges and Sixth Form Colleges. 16-18 year old students will take a special 2 year course leading to an entrance examination for a place at Sussex.

It is hoped that 20 students from Technical Colleges, and 20 more from Sixth Forms will eventually come to read engineering at Sussex in this way.

The course in the colleges will be based on a syllabus designed to provide the thorough grounding in Mathematics and Physics needed for studying engineering at degree level. Students will also have specialist training in areas of expertise not covered by the colleges.

The principal need for such a scheme according to Professor B V Jayawant, Dean of EAPS, is that "the shortage of physics and mathematics teachers in schools over the last 20 years, has had an adverse effect on suitably qualified children coming from the school system".

By the mid 1990s, half the number of available places on physics and engineering degree courses could remain unfilled, and even now there is a serious shortage of graduates. Additionally, Sussex has suffered a decline in applicants due to the high cost of living in Brighton, which encourages potential engineers to go elsewhere.

Another problem that the scheme hopes to tackle is the variability in traditional 'A' Level Mathematics and Physics courses. According to Professor Jayawant, it is possible to gain a Grade C in 'A' Level Physics without having studied either electricity or mechanics both of which are essential for many engineering degree courses.

The new course at the colleges will involve students enrolling specifically to prepare for studying engineering at the University and, subject to satisfactory performance in first year examinations, they will be offered 'Associate Student' status. This will guarantee a place at Sussex if the final examinations are passed, as well as allowing access to facilities on the campus.

Staff from EAPS will participate in the scheme by visiting the colleges to provide help and support to students. It is hoped that the scheme will be extended to cover physics and other subjects in the future.

The scheme has been enthusiastically received by local colleges, and it is hoped that more schools with sixth forms will be involved soon. It is also hoped that local industries will provide sponsorship to fund bursaries which will help students who have to travel long distances to participate in the scheme.

## WOLFSON GRANT FOR MAGNETIC BEARING RESEARCH

Innovative research being carried out in the School of Engineering and Applied Sciences (EAPS) is to be turned into a manufacturing operation following the award of a substantial grant from the Wolfson Foundation.

The grant, made to Professor B V Jayawant, Dean of Eaps, and Dr G Williams, is worth £135,000 and will help to set up a company to manufacture magnetic bearings in conjunction with Glacier Metals, a subsidiary of the Turner Newall Group of companies.

This represents a significant strengthening of the University's links with industry. A number of companies already occupy premises on campus and maintain close links with researchers, and funding for research from industry totalled £670,000 in 1986.

Professor Jayawant has been at the forefront of research in electro magnetic suspension and the industrial applications of magnetic bearings which are used to control vibrations in high speed motors, gas compressors, centrifuges, and pumps etc.

Professor Jayawant received Wolfson Foundation grants in 1971 and 1979 in the early stages of this research, and will collaborate closely with Dr Williams, who is amongst the two or three top specialists in the country on the design of high speed motors.

The application of magnetic bearing technology involves the control of the forces of attraction between magnetised bodies. These forces are very large but techniques have been perfected using powerful semi-conducting devices

to control them in electromagnets.

Magnetic bearings have two main advantages over conventional bearings. Firstly, they can work independently to alter the stiffness or dampening in rotors and shafts, thus enabling them to pass through critical speeds without excessive vibration. Secondly, they need no servicing and are extremely reliable and can thus be applied in situations where problems of maintenance are caused by hazardous or hostile conditions.

The grant from the Wolfson Foundation will help to set up a manufacturing company called Glacier Magnetic Bearings which will maintain strong links with research groups in EAPS. Office space is being taken on campus, and it is hoped that the company may eventually move into the Research Park, in a similar way to Eurotherm International who opened a new building on the campus in January.

It is hoped that four research staff will be recruited, and that some of the proceeds from the manufacturing operations will be put into further research work at the University. In the immediate term, Professor Jayawant and Dr Williams hope that the Wolfson grant will be supplemented by equal amounts from other sources.

The Wolfson Foundation is a charitable organization set up by Sir Isaac Wolfson, founder of Great Universal Stores, to provide funding for University research projects. Around 15 awards are made annually from a total of 300 applications, and Professor Jayawant is unusual in having now received three separate grants from the Foundation.

## COUNCIL & SENATE

From the meetings of Senate on March 11 and Council on March 13:

### DEANS

Professor Margaret Boden has been appointed Dean of the new School of Cognitive Sciences, for a three-year period from August 1, 1987.

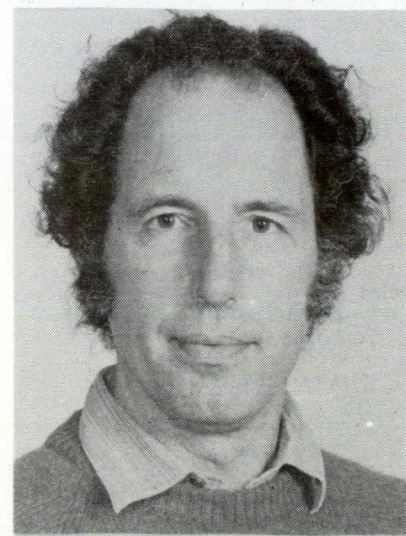
Mr. Des Cohen is to succeed Professor Boden as Dean of the School of Social Sciences on August 1, 1987, for a three-year term of office.

### PROFESSORIAL FELLOW TITLE

Professor John Toye, who takes over from Professor Mike Faber as Director of the Institute of Development Studies on August 1, 1987, has been awarded the title of Professorial Fellow of the University for the duration of his five-year appointment as Director.

### OPERATIONAL RESEARCH

The Operational Research Subject Group, based in the School of Engineering and



Mr. Des Cohen

Applied Sciences, is to be abolished from 1987-88. The staff involved are to transfer to the Science Policy Research Unit where Professor Roy Rothwell is to develop a programme of postgraduate teaching and research in Technology Management, incorporating operational research.



## EXCITING FINNISH

The Gardner Centre's programme for this year's Brighton Festival will again have an international flavour. It begins with the British debut of the brilliant Finnish dancer Jorma Uotinen (May 1 - 3) and the startling Dutch visual theatre company Studio Hinderik (May 6 - 9). Other events during the Festival include the world premiere of a new collaboration between dance company Second Stride and the band Man Jumping (May 21 - 23), a series of concerts based around Tippett's quartets by the Chilingirian String Quartet (starting on May 12) and a concert by the jazz pianist Abdullah Ibrahim, also known as Dollar Brand, on May 18.

But the Gardner's post-Easter season is already underway. Tonight (April 23) sees the second performance by the hilarious Farndale Avenue Housing Estate Townswomen's Guild Dramatic Society, a delightful spoof amateur dramatics group. Their show is titled *They Came From Mars and Landed Outside the Farndale Avenue Church Hall in time for the Townswomen's Guild's Coffee Morning*.

Chaos of a different sort is in evidence on April 24 when Inner City Theatre Company presents *Hot Stuff*, a farce on the nuclear industry by Les Miller. A redundant steelworker and his wife buy a lakeside hotel at a knockdown price, but the local wildlife seems oddly silent and static. And just what is that mysterious red glow on the horizon?

Trad jazz fans have a treat in store on Saturday, April 25, with the High Society show, featuring Max Collie, Cy Laurie, the Rhythm Aces and singers Clare Solomon and T.J. Johnson in a fun-filled New Orleans evening.

New age music has received much publicity in recent months. Come and find out why on Tuesday, April 28, when the leading New Age exponents in Britain visit the Gardner to open the *Landscape in Britain Tour*. John Themis, Stephen Caudel, Peter Adams, the Frugivores and Helen Cherry feature in a concert of music somewhere between jazz, classical and rock, mostly instrumental and already enjoying a huge cult following in the USA.

Also opening a national tour at the Gardner Centre is *Introducing With Pleasure*, a major new exhibition of works from the Arts Council's collection selected by 12 celebrities. The idea for the exhibition came from the Gardner's own Exhibitions Organiser Hilary Lane, who initiated and devised it. *Introducing With Pleasure* features paintings and sculptures by some of Britain's best-known artists, including Francis Bacon, Lucien Freud, Gilbert & George, and Bridget Riley. Kate Adie, Sir David Attenborough, Dame Janet Baker and Chelsea footballer Pat Nevin are among the diverse group who selected the works. The exhibition is on show from April 29 to May 27.

Jorma Uotinen has received tremendous acclaim throughout mainland Europe but has never before performed in Britain. The Gardner Centre presents three performances of his programme *Scream* on May 1 - 3.

More local dance comes to the Gardner on May 5 in the shape of the unconventional Brighton-based group *The Divas*,



*Lucian Freud: Portrait of Caroline, from the Introduction with Pleasure exhibition.*

who have quickly built up a controversial national reputation since their London debut earlier this year. The group is led by Liz Aggiss with music by Billie Cowie.

Also unconventional and controversial are the remarkable Dutch company Studio Hinderik, whose show *Sidewalk Edge* promises to be the most compelling and astonishing event in this year's Brighton Festival. Its themes and sensitivities ally it perhaps to *Death in Venice*, but *Sidewalk Edge* is above all a fiercely original piece of theatre. It is at the Gardner on May 6 - 9.

The Chilingirian String Quartet performs a series of four concerts featuring each of Sir Michael Tippett's four string quartets together with works by Beethoven and Haydn. The concerts are on Tuesday evenings starting on May 12, and will be augmented by two lunchtime lecture recitals on May 7 and 13, dealing specifically with the Tippett works.

## SOCIOLOGY CONFERENCE ATTRACTS 250 SIXTH-FORMERS

A sixth-form sociology conference held at the University during the Easter vacation attracted some 250 participants from schools near and far. Students from Gloucestershire and Oxford attended, as well as from schools in East and West Sussex and the London area.

Twenty-one workshops were supplemented by lectures from Kenneth Thompson of the Open University on "Beliefs and Ideologies" (the title of the conference) and Jim Beckford of Durham on "Cults, beliefs and ideologies". A discussion on the 'A' level syllabus and examining was led by Pat McNeill of Cambridge, an 'A' level moderator.

The two-day conference, run by the Sociology Subject Group, ended with a debate and question-time session on "The media and political bias" with a panel composed of TV producer Stephen Hearst; Lady Olga Maitland, journalist and Prospective Parliamentary Candidate for the Conservative Party; and Professor John Eldridge of Glasgow University.

## WHITE PAPER PROMISES MAJOR CHANGES TO HIGHER EDUCATION

The Government has set out its plans for significant changes in the higher education system in a White Paper entitled "Higher Education: Meeting the challenge", published on 1 April.

The main proposals are the reform of the University Grants Committee, the setting up of a Polytechnic and College Funding Council which will remove the Polytechnics and higher education colleges from local authority control, and the widening of access to higher education.

The Government has accepted most of the recommendations of the Croham Committee on the reform of the UGC in proposing the new University Funding Council (UFC). Although its exact terms of reference are yet to be decided the UFC's duties will "relate to the allocation of funding between universities rather than its overall amount".

The previous system of universities receiving UGC grants will be replaced by contracts drawn up between each institution and the UFC which will set out a programme of work for the year. These contracts are designed to improve accountability, to encourage universities to seek funds from the private sector, and to "secure delivery of services which are responsive to the needs of students and employers".

The Government envisages an increase in student numbers of 50,000 by 1990 and proposes to raise the proportion of 18 year olds entering higher education from 14.2% at present to 18.5% by the end of the century. Institutions will also be encouraged to take more mature and unqualified students.

The Committee of Vice-Chancellors and Principals welcomed the White Paper as a recognition of the importance of higher education to the country's prosperity, but was worried that the proposed increases in student numbers would not be enough to cover the future demand for graduates, and that cuts in funding in real terms previously announced by the Government mean that institutions would find it difficult to take extra students.

## PICKFORDS TRAVEL

At the time of going to press the University is concluding an agreement for Pickfords Travel to operate from new premises on the ground floor of the Refectory. If all goes according to plan, Pickfords will be offering the full range of their business and retail travel services on campus from April 27.

The site they should be occupying incorporates the space vacated by Lewes Travel Agency when it closed in March and the Refectory Porters Lodge. The porters will be moving back to their old location of many years ago - opposite the newsagents.



## FINANCIAL REGULATIONS

Last October, Council adopted broad financial regulations to act as a formal framework for the University's detailed financial practices and procedures. It also requested that a detailed handbook (to fill out the bare bones of the regulations) should be produced for the guidance of Heads of Budgetary Centres and other people with financial responsibilities. That handbook has now been produced and approved on behalf of Council, and has recently been circulated widely to Deans, Schools and Subject offices, heads of other units, etc.

The intention is to use the handbook as the main reference point for guidance on financial matters in future and details of procedures and rules on a wide range of topics are covered. But since this is the first time that a handbook of this nature has been produced in the University there will almost certainly be items which are not adequately dealt with (or even not dealt with at all).

Any suggestions for extending the scope of the handbook should be sent to Tony Sims, Deputy Finance Officer, in Sussex House. In any case, the aim is to update the handbook regularly each year.

As mentioned above, the handbook is available for consultation in School and Subject offices, etc., but if anyone feels that they have special need for a personal copy, a limited number is available for distribution, again on request to Tony Sims.

## INTERESTED IN

### PLAYING CROQUET?



I would very much like to hear from anyone on campus who is interested in playing croquet this summer. My idea is to form a University club, open to all staff and students, which will use the facilities at Lewes.

Don't be put off by the popular image! Newcomers to the game are often surprised to discover that croquet a) is not played at vicars' tea parties; b) is not (necessarily) vindictive; and c) demands a high level of skill and concentration.

Hopefully we can get together a group of 'serious' players who can arrange their own games at convenient times. We will provide instruction for beginners. Please contact me before the days get shorter! - tel. 2519 or (home) 685272.

Jerry Laurence

## PATENTS EXHIBITION

There is a certain air of mystique about patents, copyright and trademarks, and how the law can help inventors and authors protect their work.

To help staff and students in this very important area, the Industrial Liaison Office, in conjunction with the Patent Office, has arranged an exhibition. This will be held in the Library from Monday, April 27 to Friday, May 8. Opening times will be the same as for the Library.

Although the format has at the time of writing still to be finalised, it is expected to show in some detail how inventors and authors can protect their works by filing for a patent, registering a trademark or obtaining copyright.

Staff from the Patent Office will be present during part of the exhibition to answer questions and offer help and

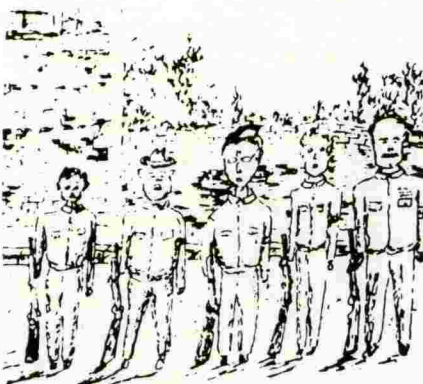
guidance. They will be in attendance on April 28 and 29 and, if support warrants it, on May 6 and 8.

In addition to the exhibition, a video produced by the Patent Office about patents will be shown on the bridge of the School of Mathematical & Physical Sciences building on April 23 and 24 and May 5 commencing at 12.45 p.m.

The University has recently retained the services of a local Patent Agent, who will be pleased to advise staff or students about any developments that could be exploited commercially but initially require patent protection. Information about this service can be obtained from the Industrial Liaison Office.

John Golds  
Industrial Liaison Officer

## CENTRE FOR CONTINUING EDUCATION



'Hailsham at War'

CCE's latest local history booklet has recently been published. Hailsham at War has been researched by Hailsham History Group and is edited by George Farebrother. It deals with the town's response to the alarms and crises of the early years of the Second World War. It ranges from the deadly serious plans to deal with the all-too-possible German invasion to the efforts of the WI on the Home Front. Available price £1.99 from CCE, Room 318, EDB and from the University Bookshop.

### Open Lecture

Monday, April 27, 5.30 p.m. Molecular Sciences Lecture Theatre:

MARTIN WIGHT MEMORIAL LECTURE  
"Armed Forces - For Peace or War?"  
by Field Marshal Lord Carver, GCB. Admission free - no tickets. Tea and biscuits available.

### Weekend Schools

May 8 - 10:

**The Natural History and Ecology of Woodland.** Tutor: Erica Towner. At the White House, Isle of Thorns, Chelwood Gate.

June 19 - 21:

**Drama Workshop.** Tutors: Tony Wiles and Terry Hodgson.

**Techniques of Suspense in Film.** Tutors: Roger Manvell, Terry Hodgson and John Marsh.

Both at the Isle of Thorns.

June 27 and 28:

**Sussex by the Sea.** Tutors: Erica Towner and Fred Gray. At Corsica Hall, Seaford.

### Saturday School

June 6 at the University

**The Development of Agrarian Capitalism in the South.** Southern History Society Conference, in co-operation with Brighton Polytechnic.

Further details of these and other courses from CCE in the Education Development Building.

## SMALL ADS

**ACCOMMODATION REQUIRED:** former Sussex Registrar Ted Shields and wife are looking for a place to rent for up to 6 months in the Brighton area from June. Enquiries, please, to Dr. G. Lockwood, Sussex House.

**HOUSE** to rent required in or near Lewes from approx. July 15 - 30 by two University faculty, and their wives, attending conference. May suit someone willing to let while on holiday. Contact: Mike Lucas, tel. 678074.

**ACCOMMODATION WANTED** for visiting professor and family, pref. Lewes area, August 10 - 24. Maybe you can rent while on holiday? Contact: Dr. A.Cody, Biology, tel. 2837.

**ACCOMMODATION REQUIRED** for Canadian professor and family visiting

Nitrogen Fixation, June 30 - August 24. Contact: Ray Richards, UNF, tel. 8246.

**WELL-FURNISHED** 5-bedroomed house required by the sea, between (not in) Brighton and Eastbourne, June 28 - August 5. Contact: Accommodation Manager, Glyndebourne Festival Opera, tel. Ringmer 812321.

**AVAILABLE TO LET** early Sept. 1987 to July 1988 to visiting faculty - detached house, Saltdean. Some sea views, 2 bedrooms (1 double, 1 twin), study, bath, shower, sitting rm, dining rm, b/fast room, kitchen, utility rm, garage, small garden. Tel. Brighton 34993 (eves) or 8192 or 3011.

**ACCOMMODATION AVAILABLE:** 3-bedroom semi, Woodingdean. Suit visiting faculty, etc. 10 mins. by car from Univ. Available Summer Term and beyond. £350 p.m. Tel. 0904 415001.



# NOTICEBOARD

## VACANCIES

The Personnel Office has issued the following summary of posts to be filled. Advertisements for these vacancies have been placed in local and, where appropriate, national press, as well as being circulated to the relevant Section Heads and union representatives for circulation to staff and noticeboards. Copies of these advertisements, and further particulars if available, as well as application forms, are obtainable from the Personnel Office, Room 227, Sussex House. This list was compiled on April 7, 1987 and is subject to revision. All posts are for male or female applicants.

### Faculty

Readerships/Lectureships in Electronic and Computer Engineering in the EEC/CS Subject Group (EAPS)

### Research and Analogous

Research Officer in Psychology in the School of Social Sciences

### Technical

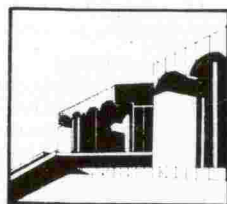
Network Project Leader in the Computing Centre  
Graphic Designer for the Photographic and Design Unit

### Secretarial, Clerical & Related

School Secretary in the School of Cognitive Sciences (Grade 5)  
Dean's Secretary in the School of Cognitive Sciences (Grade 3)  
Secretary in the Planning Section (Grade 3)  
Secretary in the Occupational Advisory Service (Grade 3)  
Secretary in the Centre for Continuing Education (Grade 3)  
SPRU Secretarial Assistant (part-time) (Grade 1/2)

### General

Junior Sportcentre Assistants in the Sportcentre (Grade 1)



## LIBRARY NEWS

Selections from the Library catalogue

Would a list of books relevant to your teaching or research be useful to you?

Using its Geac computer, staff in the Library can select book records from the Library catalogue tailored to your needs. Selections can be in either printed or electronic form depending on your requirements.

For further details of this service, please contact David Kennelly for teaching support, or the Research Support Group (Mike Lewis - Arts & Social Studies, or Jenny Pendlebury - Sciences) or your subject librarian.

## UNIVERSITY CLOSURES

This term the University will be closed for Bank Holidays on Monday, May 4 and 25. The Library will remain open on May 4, from 1400 to 1930, with Sunday-type services.

## TECHNOLOGY CHALLENGE '87

This is a nationwide competition open to all university, polytechnic and college personnel and sponsored by The Times Higher Education Supplement and Digital. The competition is for a computer-based project or application which would be of interest to local business, industry or the community, or might further teaching or education in general. The first prize is £70,000-worth of DEC computers.

Closing date for entries: **May 10, 1987.** Competition leaflets are available from the Information Office, Sussex House.

## RECENT BOOKS

Recent publications by Sussex authors include:

**Language in Mind and Language in Society.** Studies in Linguistic Reproduction by Trevor Pateman. Oxford U.P. £25.00.

**Maps by Computer.** The 1981 Census Atlas of Brighton and Hove, by Tom Browne and Tony Fielding. Buchanan Publishing. £35.00.

**Memory and Amnesia.** An Introduction, by Alan J. Parkin. Blackwell. Paperback, £7.95.

**Introduction to Gauge Field Theory** by David Bailin and Alexander Love. 2nd edition. Hilger. Paperback, £19.50.

**Post-Structuralism and the Question of History.** Edited by Derek Attridge, Geoff Benington and Robert Young. Cambridge U.P. £27.50.

**Issues in Contemporary German Social Psychology.** History, Theories and Applications. Edited by Gün R. Semin and Barbara Krahe. Sage. £25.00.

**85 Abba** by John Caffyn. A book of 'mirror poems'. Pentalpha. £4.95.

All available from  
**SUSSEX UNIVERSITY BOOKSHOP**

## UNIVERSITY ENTRANCE THE OFFICIAL GUIDE 1988

This year, the above publication replaces the familiar Compendium of University Entrance Requirements. Described as easier to use than the old Compendium, it provides more information at the same price of £9.50. Published by the Standing Conference on University Entrance in June, it lists 9,000 courses and includes profiles of 82 universities and university colleges.

## TERM DATES

This term ends on Friday, June 26. The term dates for the next academic year are: Monday, October 5 - Friday, December 11, 1987; Monday, January 4 - Friday, March 11, 1988; Monday, April 18 - Friday, June 24, 1988.

## LIST OF PUBLICATIONS BY MEMBERS OF STAFF, 1985

The above document has recently been published by the Planning Section. It brings together lists of publications by staff, as prepared by Schools and units. Copies have been distributed to Deans and a few copies remain available from the Planning Section, Sussex House.

## SCIENCE AND ENGINEERING RESEARCH COUNCIL

The Science and Engineering Research Council's closing date of April 1 for the submission of grant applications has been extended to **April 30, 1987.**

Dates for the next grant application round have been amended. In future there will be only two grant application rounds. They are:

Nuclear Physics Board -  
August 15 and January 15  
Science Board; Astronomy and Planetary Science Board -  
September 15 and February 15  
Engineering Board -  
October 15 and March 15

There have been a significant number of other changes, and information about these can be obtained from the Research Grants Office.

## Conference of University Administrators Silver Jubilee publication BEYOND THE LIMELIGHT

To mark its 25th birthday, the CUA has published a volume of 16 essays, including one by Sussex's Registrar & Secretary Dr. Geoff Lockwood on the "Role of University Administrators: Second Thoughts". The book should appeal to anyone with interests in general or specific aspects of the management of British universities.

Beyond the Limelight, edited by Stuart Bosworth, is available price £6.95 (CUA members £5.50) plus £1.65 p & p, from: CUA Publications Officer, Room 206, Whiteknights House, The University, Reading, RG6 2AH.

## LUNCHTIME MUSIC

### Meeting House

1.15 p.m. in the Chapel. Tuesdays.  
April 28: Haig Utidjian (bass baritone)  
May 5: John Birch (organ)  
May 12: Han Huang (guitar) and Jenny Taylor (violin)  
May 19: John Birch (organ)

### Sussex Trugs

1 - 2 p.m. Playing Fields Pavilion. Fridays.  
Mainstream/traditional jazz.

# BULLETIN

The Bulletin will be published every three weeks this term. The next edition will appear on the (revised) date of **Tuesday, May 12.** Copy must be received in the Information Office, Level 2, Sussex House (tel. 8208) by no later than 4 p.m. on **Friday, May 1.**

The other (revised) publication dates are: June 2 (copy date May 22) and June 23 (copy date June 15).

We can only inform you, if you remember to inform us - so please let us know about news events.

The Bulletin is for the information of staff and students of the University of Sussex. Published by the Information Office. Photographs by the Photographic and Design Unit. Printed by the University of Sussex Printing Unit.



# The University of Sussex

# BULLETIN

April 23, 1987

Published by the Information Office

## THE UNIVERSITY OF SUSSEX PLAN FOR 1990: A SUMMARY

The Draft Plan for 1990 was published in February. After it had been discussed by the Senate, the Council approved it, with small amendments, in March. As amended, the document is now the University Plan for 1990. Here is a summary of its main points. The Draft Plan has already been widely circulated, but a few copies are still available from the Planning Section, Sussex House.

### PROJECTED INCOME

The top section of Table 1 shows the University's likely income in each of the next three years. The principal element is the grant allocation from the University Grants Committee (UGC). The figures for that represent a significant improvement on the forecast in the Green Paper of last October, because Sussex fared better than expected in the UGC grant allocations announced in February. Sussex received the sixth largest percentage rise from 1985/86 to 1989/90, of all 52 GB universities. These latest figures

form the basis on which the Plan has been prepared.

Although the total sums of money increase year by year, to arrive at the true position faced by the University in real cost terms, provision must be made for non-salary inflation and the costs of pay awards, which, as with the recent award to academic and related staff, may run ahead of the general rate of inflation. Staff pay accounts for around 70% of total University expenditure each year. Provision for inflation is shown as a separate line item in the table to facilitate year to year comparison of the allocations for other items.

### STUDENT NUMBERS

The UGC grant is the major source of the University's income, but another important source is tuition fees. Therefore, the projected number of students, and particularly of overseas students is a crucial element. As

TABLE 1

	1986/87 revised £000	1987/88 £000	1988/89 £000	1989/90 £000	as % 1986/87 baseline %
<b>INCOME</b>					
U.G.C. Grant	14,703	15,530	16,410	17,210	
Tuition Fees	5,325	5,425	5,730	6,115	
Interest and Other	850	700	650	600	
	20,878	21,655	22,790	23,925	
<b>EXPENDITURE</b>					
Academic Units:					
Teaching faculty	8,180			7,791	95
Other academic items	3,337			3,191	95
Other items (inc. CCE)	800			739	91
	12,317	12,031	11,917	11,721	95
Library (inc. Lang. Centre)	1,627	1,632	1,592	1,553	93
Computing Centre (inc. RDAU)	428	428	440	451	111
Major repairs and redecorations	795	925	1,055	1,185	178
Premises (inc. Sport)	1,750	1,731	1,710	1,690	95
Administration	1,878	1,853	1,825	1,801	94
Businesses	96	95	94	93	96
Students Union	239	235	231	227	93
Miscellaneous (inc. Gardner Centre, Chaplaincy, UHS etc)	790	776	762	747	92
Minor Works	187	187	187	187	100
Unallocated	79	-	-	-	-
Development Fund	-	200	225	250	-
Provision for inflation	830	1,816	2,909	4,020	-
	21,016	21,909	22,947	23,925	98
<b>Deficit for year</b>	<b>138</b>	<b>254</b>	<b>157</b>	<b>0</b>	
<b>Accumulated surplus on Income &amp; Expenditure Account at year end (1 Aug 1986 = £549K)</b>	<b>411</b>	<b>157</b>	<b>0</b>	<b>0</b>	



far as home and EEC students are concerned, the University has accepted the targets of student numbers used by the UGC in calculating the grant, with some adjustments relating to Computer Studies. These assume a total of 3,264 undergraduate and 765 postgraduate "home" students in 1990, compared with the current figures of 3,267 and 748 respectively.

Overseas students pay to the University fees which approximately cover the full cost of their courses. The income projections assume that the number of students paying overseas fees will rise from 534 in the current year to 597 in 1989/90.

#### THE ALLOCATION OF EXPENDITURE

The projected income shows that in 1989/90, after allowing for inflation, the University will have available 98% of the total amount of money allocated for the current year - a cut in real terms of 2%. The bottom section of Table 1 shows how the money is to be allocated to the main heads of expenditure. The cut is not spread equally. Some heads will receive more money in real terms, some will be cut by more than 2%.

Major Building Repairs will receive a big increase. By the mid 1990s, nearly all campus buildings will be over 20 years old and in need of major repairs to electrical and heating systems as well as structural elements. A survey of buildings in 1985 showed that repairs costing £8 million would be needed by 1990. Even after pruning this figure by delaying all but the most urgent repairs, spending of more than £1 million will be necessary in each of the next three years, and on into the 1990s.

The allocation to the Computing Centre will be increased by 11% in real terms, in part because of the growing numbers of students studying computing.

The allocation to academic units will be 5% less in real terms in 1989/90 than in 1985/86. This compares with the 7.5% cut forecast in the Green Paper of October 1986. All other expenditure heads will face a 6% cut in real terms.

Significant sums (£250,000 in 1990) are being set aside each year for a Development Fund which will be used to finance new projects, mainly in the academic field.

#### ALLOCATION OF ACADEMIC EXPENDITURE

##### Budgetary Centres

The allocation of funds to academic units has not been broken down in the same detail as for other units in Table 1. A new budgetary system will be introduced in 1987/88 based on Budgetary Centres, which will correspond closely to existing spending units in the non-academic areas. Greater changes will occur in the academic areas where each School will be a separate Budgetary Centre with the Dean as its head.

The Continuing and Professional Education Area and the Science Policy Research Unit will also be Budgetary Centres.

Each Budgetary Centre will receive an allocation direct from the University Council. The control of the budget for each School will rest with the Dean who, subject to centrally agreed rules, will have discretion over how the School's allocation will be spent.

The division of the total academic budget between Schools will be recalculated for each year on the basis of up-to-date information and projections of student numbers, teaching patterns and research activities.

##### Academic Staffing

The Deans will receive a financial allocation for their School, and the exact number of academic posts to be supported from that allocation will be at their discretion. Nevertheless, the Plan assumes that the distribution across academic staff, support staff and non-salary costs will follow present patterns. On this basis, 395 academic posts can be supported as against a current commitment of 410 posts.

However, some groups are marked for increases in staff which can only be afforded by losses from other groups. Certain subjects have been identified for special review.

A projected distribution of academic posts between Subject Groups and Schools has been included in the Draft Plan.

#### OTHER STAFF

Table 2 below shows the actual numbers of staff in various categories in the years 1980, 1983 and 1986.

TABLE 2 - Staffing Numbers at 31 December  
% reduction

	1980	1983	1986	1908/83	1980/86
Non academic faculty	162	131	133	19	18
Clerical and related	344	296	299	14	13
Technical and computing	208	164	176	21	15
Manual and ancillary	218	169	183	22	16
SUB TOTAL	932	760	791	18	15
Teaching faculty (including CCE etc.)	476	426	448	11	6
TOTAL	1408	1186	1239	16	12

The overall reduction in non-academic staff has been lower than expected due to the success of the University in raising income from non-UGC sources.

The smaller than average cut in teaching staff reflects the low level of natural wastage among academics and the fact that new posts for younger staff have been created with special funds from the UGC. Income from overseas students has been used to support temporary academic posts.

Major reductions in staff numbers were made, notably in 1982/83, without resorting to compulsory redundancy and much smaller reductions are envisaged over future years.

The net number of job losses resulting from the overall cut in funding cannot be predicted accurately due to the powers of the Budgetary Centres to distribute their own resources. However, forecasts of the required number of cuts in each staff category have been calculated, using December 1985 as a baseline:

	Estimate of net reductions from base-line by 1989/90	Post now vacant or temporarily filled
Non academic faculty	8	9.5
Clerical and related	8	18.0
Technical and computing	7	4.0
Manual and ancillary	10	8.5
TOTAL	33	40

If some Budgetary Centres, as is likely, will be able to increase their staffing, the reductions in the other centres will be more than in the table. However, there is more scope than with academic staff for redeploying staff.

The University Senate and Council have accepted the levels of job cuts on the understanding that they should be achieved by natural wastage, redeployment and early retirement.

Although the new Budgetary Centres will have more control over spending, their budgets including manpower budgets must still be approved centrally. Any changes to personnel policies will be subject to consultations or negotiations with the appropriate Trade Union.