

# Welcome to the University of Sussex Wireless & Wired Network

Internet/email access (wireless or wired) is available for conference delegates via the web browser on your laptop if you have a securely configured laptop. If you require wireless access your laptop must be wireless enabled. If you require wired access you must bring an ethernet cable/adaptor with you.

The Conference Office can register you as a temporary user for the duration of your conference, and they will need to do this before you can access the Internet. You must contact the Conference Office or your conference organiser to arrange this at least 2 weeks prior to your arrival on campus. You can register for either wired or wireless access or both. For wireless access you will need to supply the MAC address of your laptop's wireless card. For wired access you will need to supply the MAC address of your laptop's ethernet card. Please note that only wired access is available in the Lewes Court accommodation. Separate instructions on how to find your MAC address are available.

This guide gives an outline of how to configure a laptop running Windows XP or Mac OS X. It assumes that you have your own wireless network adaptor either inbuilt or external to your laptop. The adaptor should be installed on your system and functioning correctly. Also, you should have a good working knowledge of Windows XP or Mac OS X.

Once your laptop is correctly configured the Conference Office will supply you with the University of Sussex's WEP key and a conference user-name and password. You will need to sign a form declaring that you agree to comply with the University of Sussex Regulations for the Use of Computers and Computer Networks.

## Getting connected at Sussex

You will need to enter the Sussex-specific network settings as follows:

The Sussex WEP key allows authorised users access to information on the Sussex wireless network. This will have been given to you when you arrived. For Windows PCs this is 10 consecutive hexadecimal digits.

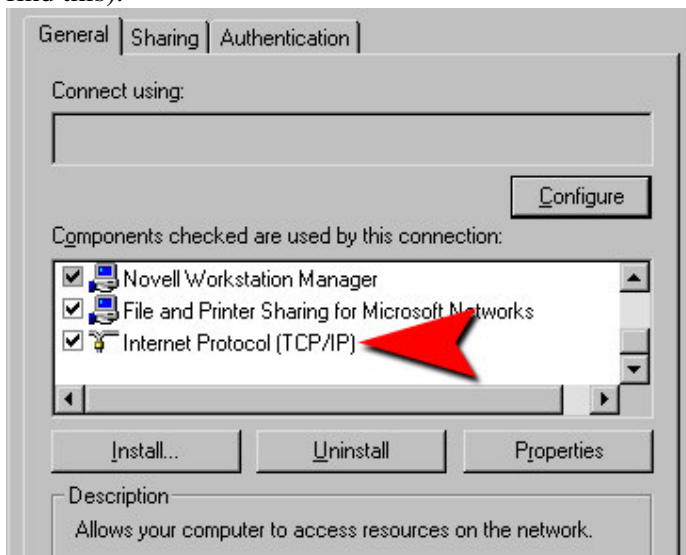
You will also have been given the conference username and password which lasts for the duration of your conference. You will be prompted for this the first time you connect to the Internet, e.g. **tmp-20**

The following steps will set up the connection for Windows XP:

- **Start > Control Panel > Network connections**
- we wish to configure "wireless" so right-click and select **Properties**
- click on the **Wireless Networks** tab
- tick **Use windows to configure my wireless network settings**
- click on **Roaming** then **Configure** ("*Roaming*" is the SSID of the Sussex wireless network)
- In the **Wireless Network** properties window:
  - tick **Data encryption (WEP enabled)**
  - tick **Network Authentication (Shared mode)**
  - *untick* **The key is provided for me automatically**
  - type the WEP key in the **Network key** box


## Further settings

- click the **Authentication** tab
- *untick* **Enable IEEE 802.1x...**
- click **OK**
- click on **General** tab
- Make sure you have **Internet Protocol TCP/IP** installed (you may need to scroll down the list to find this):



- If not, do so by clicking **Install**, choosing **Protocol > Add** and selecting **Internet Protocol TCP/IP**
- Select **Internet Protocol TCP/IP** and click on **Properties**
- In the **TCP/IP** window, under **General** make sure you tick:
  - **Obtain IP address automatically**
  - **Obtain DNS server address automatically**
- Click **Advanced**
- Click **IP settings** tab
  - make sure **DHCP Enabled** is entered, and that there are no entries under **Default gateways**
- Click **DNS** tab:
  - select **Append primary and connection specific DNS suffixes**
  - tick **Append parent suffixes**
  - tick **Register this connection's addresses** at the bottom of the window
- Click **WINS** tab:
  - select **Use NetBIOS setting from DHCP server**
- Click **OK** and **OK** again

## Check that your Wireless connection works

To check that your configuration has been set up correctly, click on the network icon in the “system tray” (at bottom right-hand corner of the desktop): 

The window that appears will indicate the signal strength of your network connection. If there is no connection, please go back through the steps listed above in 2, 3 and 4 and ensure you have entered all the settings correctly.

## Internet settings

Once you are sure that your card has been correctly configured, you will need to change your PC’s Internet Options so that you can connect to the internet through the University’s “proxy server”:

- Open Internet Explorer
- From **Tools** select **Internet Options**.
- Click on **Connections** tab.
- Click on **LAN Settings**.
- Under **Automatic configuration**:
  - tick **Use automatic configuration script**.
  - type the following URL in the **Address** box:  
**http://www.sussex.ac.uk/proxy.pac**
  - click **OK**.

You should now be able to connect to the internet. Please note that on the first connection of a session you will be prompted for your IT Services username and password.

Please visit: <http://windowsupdate.microsoft.com/>

immediately to ensure that your laptop has the latest security update from Microsoft installed.

## Wired roaming network

Access to the wired roaming network is also available in a growing number of locations across campus. The active points to connect to this are indicated by a “Roaming Network” sticker. You will need a network (ethernet) card to access it, and will also have to provide a cable to connect your computer to a roaming port - these can be purchased from the University Bookshop.

In order to configure your computer to access the wired roaming network, you will need to select **Start > Control Panel > Network connections**. Right-click **Local Area Connection** and select **Properties**. Now follow instructions from “**Further Settings**” above. Please note that you must only plug into ports labelled as follows:



## Mac OS X: Requirements Prior To Installation

- These guidelines describe the setup in Panther system MacOS 10.3.
- You must have a Apple Airport card present in your laptop.
- The minimum version of Apple Airport driver approved for use with the ITS Wireless Network is 2.0.5.smi.
- The minimum version number known to be completely satisfactory is Mac OS X 10.1.5.

## Wireless Encryption Password

Before you start you will need the IT Services Wireless Password. This will have been given to you when you arrived and is a string of lowercase alphabetic characters.

## Configure the Apple Airport Connection



- Locate the Apple Airport Signal Strength icon on the top menu bar:
- Click on the icon. If **Airport** is off, turn **Airport** on.
- The wireless network **Roaming** should be visible.
- Click on **Roaming** and enter the Wireless Security Password in the popup window. Tick the **Add to Keychain** box so that you do not need to enter the password each time you connect to the wireless network. Click **OK**.

## Check IP Settings

- Under **System Preferences**, select the **Network Control Panel**. From the **Show:** pull down menu, select **AirPort**.
- Select the **TCP/IP** tab.
- Make sure that the **Configure IPv4** menu is set to **Using DHCP**
- click on the **Airport** tab and in the **By default, join:** popup select **A specific network**.

Now that the Wireless network is live, in order to access web sites off campus, the proxy settings have to be configured to University standards. From **System Preferences** access the **Network control panel > Airport > Proxies** and enter the following settings:

HTTP Proxy:            **wwwcache.sussex.ac.uk**            Port: **8080**  
No proxy for:        **sussex.ac.uk**  
                         **\*.su\*x.ac.uk**  
                         **sussex.ac.uk**  
                         **susx.ac.uk**  
                         **139.184.\***  
                         **localhost**

Ensure that the **Proxy Server requires a password** box is ticked, and enter your university username and password.

Ensure that the **Use Passive FTP mode (PASV)** box is also ticked as otherwise you may not be able to make FTP connections.