



Join us for a day of  
entertainment and discovery

SUNDAY 25 JUNE 2017  
11AM TO 4PM  
UNIVERSITY OF SUSSEX CAMPUS, FALMER

**US**  
UNIVERSITY  
OF SUSSEX



**2**  
**MAP**

**4**  
**PROGRAMME**

- Pevensey building
- Arts A building
- Attenborough Centre for the Creative Arts (ACCA)
- Falmer House
- Meeting House
- Brighton and Sussex Medical School (BSMS)
- Moroccan Tent
- Sports Centre
- Library Square

**16**  
**HELP AND INFORMATION**

I'm really delighted that you've been able to join us at our very first University of Sussex Community Festival. Welcome from everyone at the University of Sussex, we hope you have a fun day of exploration and discovery.

We have a wide range of exciting and interactive activities for all ages to show you the great things we do here at Sussex. From lab tours to art history talks, virtual reality to mock trials, we hope today will help to bring our research to life.

For those of you looking to get active, Sussex Sport are running taster sessions in everything from yoga to tag archery, volleyball to Zumba.

There's plenty to entertain younger visitors with face painting and a variety of crafting activities on offer, as well as the teddy bear hospital for our budding doctors.

We also encourage you to explore some of our unique buildings and fantastic surroundings. Why not hear some live jazz or watch a film in our recently opened Attenborough Centre for the Creative Arts, or go on the Boundary Walk and find out more about the local flora and fauna on and around campus. Or you may just wish to relax in the grounds and enjoy a picnic.

This is one of many events we will be holding for our neighbours in the local community, I hope you have a lovely time and come back again soon.



PROFESSOR ADAM TICKELL,  
VICE-CHANCELLOR

KEY

- Emergency blue phone
- Defibrillator
- Toilets
- Baby changing
- Information hut
- Food – cafe / market
- Marquee / Welcome point
- First Aid
- Lost children
- Parking



# Pevensey building

## EDUCATION AND SOCIAL WORK

### IMPROVING ACCESS TO HIGHER EDUCATION

Hear from our education researchers about how children can be encouraged to reach their full potential, regardless of their background.

**Category:** Talk

**Target age group:** All ages

**Duration:** Drop in sessions between 11:30am–1:30pm, 2:30pm–4pm

**Room:** Pevensey 1 – 2A11

**Capacity:** 24

### LEARNING IN CHILDHOOD – FOR PARENTS AND CARERS

Do you have a child under five? Find out from our researchers about how you can support their early learning and development.

**Category:** Talk

**Target age group:** Parents/carers

**Duration:** 30 minutes

Session 1 – 11.30am–12.30pm

Session 2 – 12.30pm–1.30pm

Session 3 – 2.30pm–3.30pm

**Room:** Pevensey 1 – 2A1

**Capacity:** 30

## ENGINEERING & INFORMATICS AND LIFE SCIENCES

### EXPERIENCE THE WORLD THROUGH THE EYES OF A BEE USING A VR HEADSET

Collect as much pollen as you can in this fun game. Next, take a journey underwater to explore how the vision of a fish compares to our own eyesight.

**Category:** Demonstration

**Target age group:** All ages

**Duration:** Drop in sessions between

11:30am–1:30pm, 2:30pm–4pm

**Room:** Pevensey 1 – 1B2

**Capacity:** 40

## FROM INSECTS TO ROBOTS

Insect brains may be small, but they're still responsible for some fascinating behaviours. Discover how bugs and their brains are helping our researchers to design the next generation of robots.

**Category:** Talk

**Target age group:** 6+

**Duration:** 40 minutes

Session 1 – 11.30am–12.30pm

Session 2 – 12.30pm–1.30pm

Session 3 – 2.30pm–3.30pm

**Room:** Pevensey 1 – 1A6

**Capacity:** 70

## MAKING SENSE OF SOCIAL MEDIA

How can technology help us to make sense of the hubbub of social media and find out what people are really thinking? Find out with a demonstration from our Text Analysis Group.

**Category:** Demonstration

**Target age group:** All ages

**Duration:** Drop in sessions between

11:30am–1:30pm, 2:30pm–4pm

**Room:** Pevensey 1 – 1A3

**Capacity:** 32

## LAW, POLITICS AND SOCIOLOGY

### LAW, POLITICS AND SOCIOLOGY IN THE COMMUNITY

Learn how our School of Law, Politics and Sociology has been working with the local community. Hear about their free law clinics, outreach through research and teaching, and volunteering activities.

**Category:** Talk

**Target age group:** All ages

**Duration:** Drop in sessions between

11:30am–1:30pm, 2:30pm–4pm

**Room:** Pevensey 1 – 2A3

**Capacity:** 24

## CONSTITUTIONAL CONVENTION: INTERACTIVE WORKSHOP

Help to draft a written constitution for the UK. In this interactive session, you'll work with academics to decide what our constitution should look like in a post-Brexit environment.

**Category:** Participatory

**Target age group:** 12+

**Duration:** 1 hour

Session 1 – 11.30am–12.30pm

Session 2 – 12.30pm–1.30pm

Session 3 – 2.30pm–3.30pm

**Room:** Pevensey 1 – 2A2

**Capacity:** 30

## LIFE SCIENCES

### MAKING MARVELLOUS MEDICINES

See the labs where we're designing new treatments for mental illness, cancer and respiratory diseases. You'll also get to meet researchers who are working on these drugs of the future.

**Category:** Guided tour

**Target age group:** All ages

**Duration:** 30-45 minutes

Session 1 – 11.30am–12.30pm

Session 2 – 12.30pm–1.30pm

Session 3 – 2.30pm–3.30pm

**Room:** Pevensey 2 (meeting point)

### DNA DISCOVERIES

What is DNA and how do scientists use it? Try your hand at extracting real DNA, and hear how we use it in our labs to better understand genetic diseases.

**Category:** Talk

**Target age group:** All ages

**Duration:** Drop in sessions between

11:30am–1:30pm, 2:30pm–4pm

**Room:** Pevensey 1 – 1B3

**Capacity:** 40

## MATHEMATICAL AND PHYSICAL SCIENCES

### MATHS AND PHYSICS OPEN HOUSE

Visit the School of Mathematics and Physical Sciences for a variety of maths and physics themed demonstrations and talks. Our staff and students will also give you a guided tour of our world-leading physics research labs.

**Category:** Tour/demonstration

**Target age group:** 16+

**Duration:** Drop in sessions between 11:30am–1:30pm, 2:30pm–4pm

**Room:** Pevensey 2 (foyer)

### CLUSTERS OF GALAXIES: THE SHY GIANTS OF THE COSMOS

Galaxy clusters may appear beautiful when viewed through a telescope, but they play host to some of the most violent and energetic explosions in the Universe. Discover how these clusters are helping our physicists to uncover the mysteries of dark matter, dark energy and black holes.

**Category:** Talk

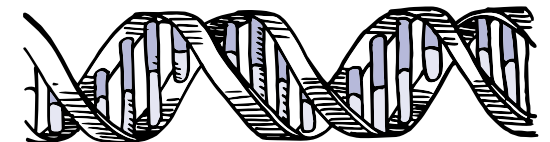
**Target age group:** 12+

**Duration:** 1 hour

Session 1 – 11.30am–12.30pm

**Room:** Pevensey 1 – 1A7

**Capacity:** 194



**MAKING CONNECTIONS**

What is the connection between a zombie apocalypse, a long queue and traffic on the motorway? It all comes down to maths – and Dr Nicos Georgiou will show you how.

**Category:** Talk

**Target age group:** 16+

**Duration:** 1 hour

Session 2 – 12.30pm–1.30pm

**Room:** Pevensey 1 – 1A7

**Capacity:** 194

**LISTENING TO THE SOUND OF THE HIGGS IN THE BIG BANG WITH GRAVITATIONAL WAVES**

The detection of gravitational waves last year has opened a new window on the Universe, through which we can look back to the very earliest moments of the Big Bang.

Hear more about this important discovery, and how it relates to other key experiments like the Large Hadron Collider.

**Category:** Talk

**Target age group:** 16+

**Duration:** 1 hour

Session 3 – 2.30pm–3.30pm

**Room:** Pevensey 1 – 1A7

**Capacity:** 194

**THE DARK ENERGY SURVEY TREASURE TRAIL**

Match captions to cartoons in this educational game about physics. Correct answers will be rewarded with astronomy themed sweets.

**Category:** Participatory/ Tour (a self-directed tour followed by Q&A at a stand staffed by students)

**Target age group:** 8+

**Duration:** Drop in sessions between

11:30am–1:30pm, 2:30pm–4pm

**Room:** Pevensey 2 (corridor)

**SUSSEX CENTRE FOR LANGUAGE STUDIES****GERMAN LANGUAGE WORKSHOP**

Fancy learning more about German language and culture through an interactive workshop?

No prior knowledge of German is required – just bring yourself and a sense of fun!

**Category:** Mini lecture/participatory workshop

**Target age group:** 9+

**Duration:** 1 hour

Session 1 – 11.30am–12.30pm

Session 2 – 12.30pm–1.30pm

Session 3 – 2.30pm–3.30pm

**Room:** Pevensey 1 – 2A12

**Capacity:** 48

# Arts A building

**EDUCATION AND SOCIAL WORK****COMMUNICATING WITH THE GENERAL PUBLIC**

Do you trust what you read in the media? Do you agree with some politicians who are fed up with 'experts'?

Join education expert James Williams and newspaper editor Arron Hendy for a discussion about the role of academics in the media.

**Category:** Talk

**Target age group:** 18+

**Duration:** 1 hour

Session 1 – 11.30am–12.30pm

Session 2 – 12.30pm–1.30pm

Session 3 – 2.30pm–3.30pm

**Room:** Asa Briggs Lecture Theatre A1 Arts A

**Capacity:** 167

**ART HISTORY SOCIETY****'ALL IN THE BEST POSSIBLE TASTE'**

Our art historians are interested in everything from Byzantine icons and Renaissance prints to shrunken heads and different museum experiences.

But is an art historical object tasteful, and if so, is it 'all in the best possible taste'?

**Category:** Talks and one panel discussion

**Target age group:** 14+

**Duration:** 3 x 20 minutes sessions

Session 1 – 11.30am–12.30pm

Session 2 – 12.30pm–1.30pm

Session 3 – 2.30pm–3.30pm

**Room:** Asa Briggs A05 Arts A

**Capacity:** 70

**CAMPUS DEVELOPMENT****HISTORY AND FUTURE OF SUSSEX CAMPUS**

Hear more about the history of the University, and our plans for developing our campus.

**Category:** Talk

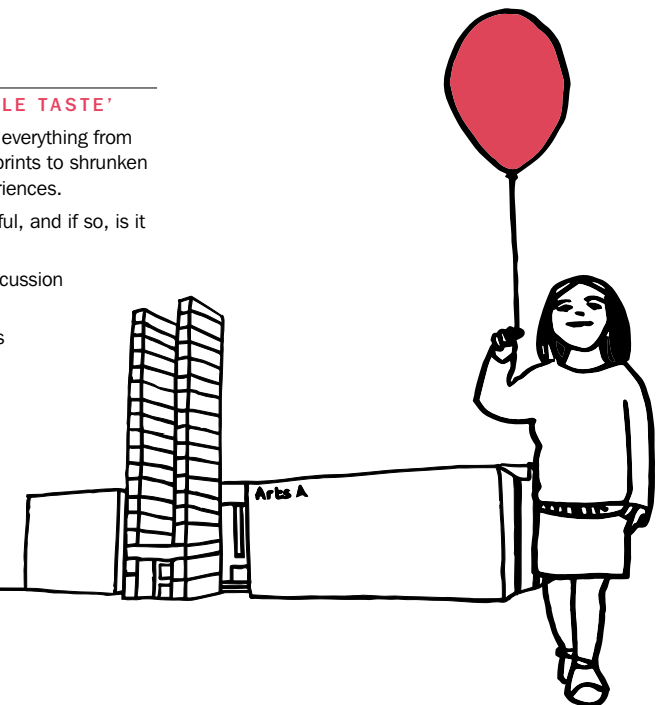
**Target age group:** All ages

**Duration:** 1 hour

Session 2 – 12.30pm–1.30pm

**Room:** Asa Briggs Lecture Theatre A2 Arts A

**Capacity:** 285



# Attenborough Centre for the Creative Arts (ACCA)

## TERRY SEABROOK

### JAZZ TRIO

Live jazz music in the bar at the Attenborough Centre for the Creative Arts.

**Category:** Music

**Target age group:** All ages

**Duration:** Drop in 12:30pm–4pm

**Room:** ACCA – Bar

### ENGLISH

#### PLAYING DRAMA GAMES: THE JOYS OF COMMUNITY ARTS PRACTICE

Hear Charlotte Durbidge and Kate Mercer's experiences of running drama workshops at First Base, a homeless day centre in Brighton.

There will also be time for discussions about how to develop open and inclusive community arts activities.

**Category:** Drama/discussion

**Target age group:** 12+

**Duration:** 40 minutes

Session 1 – 11.30am–12.30pm

**Room:** 2 Seminar room

**Capacity:** 20

### TEXT CREATION

In the first of two drama workshops, we'll go through a few automatic writing exercises and experiment with how to create scripts. These will be completed in small, fun groups.

**Category:** Drama/performance

**Target age group:** 16+

**Duration:** 1 hour

Session 2 – 12.30pm–1.30pm

**Room:** ACCA Workshop studio

**Capacity:** 20

## GETTING ON YOUR FEET

Our second drama workshop will focus on how to generate movement compositions with others, both in pairs and in small groups.

It will end in a small performance using both your created script and your movement composition.

**Category:** Drama/performance

**Target age group:** 16+

**Duration:** 1 hour

Session 3 – 2.30pm–3.30pm

**Room:** ACCA Workshop studio

**Capacity:** 20

## LAW, POLITICS AND SOCIOLOGY

### STAND UP FOR JUSTICE: THE COURT ROOM EXPERIENCE

Learn how the courts work by taking part in mini human rights trials and criminal advocacy.

You'll be able to argue and present a 'case' before the court. This session is based on events that we run for local school groups.

**Category:** Participatory

**Target age group:** 12+

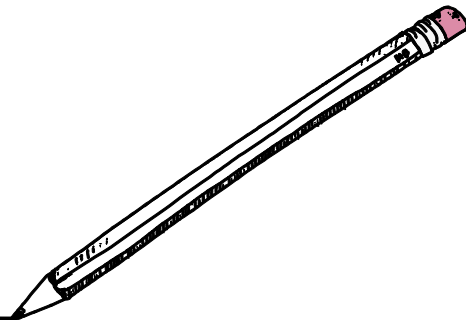
**Duration:** 1 hour

Session 1 – 11.30am–12.30pm

Session 2 – 12.30pm–1.30pm

Session 3 – 2.30pm–3.30pm

**Room:** Jane Attenborough Studio



## JARED LOUCHE

### STORYTELLING

Come and enjoy a selection of weird and wonderful stories with renowned American poet, musician and performer Jared Louche.

You'll hear stories from all around the world, both known and unknown.

**Category:** Story telling

**Target age group:** All ages

**Duration:** 1 hour

Session 1 – 11.30am–12.30pm

Session 2 – 12.30pm–1.30pm

Session 3 – 2.30pm–3.30pm

**Room:** Gardner Tower

## MEDIA, FILM AND MUSIC

### BRIGHTON: SYMPHONY OF A CITY

Watch a feature-length film about the city of Brighton in all its festive, bohemian, campaigning glory.

"Brighton: Symphony of a City" combines silent film with a sumptuous orchestral soundtrack.

**Category:** Film

**Target age group:** PG

**Duration:** 45 minutes

Session 1 – 12.30am–1.30pm

**Room:** Auditorium

**Capacity:** 308

### A GOLDEN OPPORTUNITY

Explore the University of Sussex's past, present and future in this documentary, complete with archive footage and interviews with students and staff.

**Category:** Film

**Target age group:** PG

**Duration:** 51 minutes

Session 2 – 11.30am–12.30pm

**Room:** Auditorium

**Capacity:** 308

## HISTORY, ART HISTORY AND PHILOSOPHY

### THE BRUCE LACEY EXPERIENCE

Meet the artist Bruce Lacey – at times an oddball comedian, actor, painter and sculptor, inventor of robots and automata, post-hippy shaman and guru to bands of New Age travellers.

In this fascinating documentary, Turner Prize-winning artist Jeremy Deller and filmmaker Nick Abrahams reveal Bruce Lacey and his work in all its uplifting and inspiring glory.

**Category:** Film

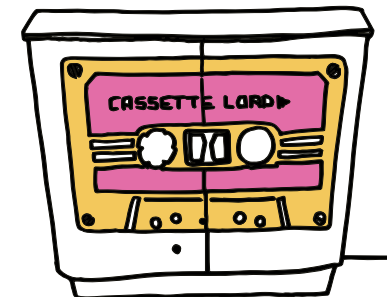
**Target age group:** 15+

**Duration:** 1 hour 13 minutes

Session 3 – 2.30pm–3.45pm

**Room:** Auditorium

**Capacity:** 308



## Falmer House

### EDUCATION AND SOCIAL WORK

#### PICTURE THE FUTURE: A CREATIVE WORKSHOP

How do you picture the future – what's important to you, what's exciting, and what do you think life might be like?

In this session we will get creative and picture the future, using various drawing and art materials as well as photography.

**Category:** Participatory

**Target age group:** All ages

**Duration:** Drop in sessions between 11:30am–1:30pm, 2:30pm–4pm

**Room:** Mandela Hall

#### MESSY PLAY

Enjoy a range of sensory and messy play activities with your child. Our education researchers will be on hand to explain the importance of play, and how to support your child's development.

**Category:** Participatory

**Target age group:** Children

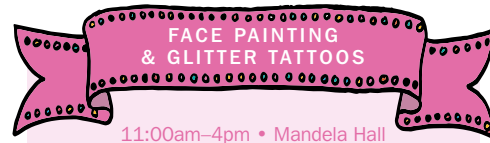
**Duration:** Drop in 11:30am–1:30pm

**Room:** Mandela Hall

#### FREE SUMMER FÊTE ACTIVITIES

Bouncy castle  
Fairground stalls  
Giant garden games

11:00am–4pm • Outside Mandela Hall



### CHILDCARE CENTRE

#### CHILDREN'S ACTIVITIES

Take part in exciting craft activities with staff from The Co-operative Childcare Centre. Aprons provided.

**Category:** Participatory

**Target age group:** Young children

**Duration:** Drop in sessions between 11:30am–1:30pm, 2:30pm–4pm

**Room:** Mandela Hall

### ENGINEERING AND INFORMATICS

#### FIREFLY GAME: PLAY IN THE DARK!

Try this fun game that will test your memory. How many flashing 'fireflies' can you collect once the lights go out?

**Category:** Participatory

**Target age group:** 7+

**Duration:** Drop in sessions between 11:30am–1:30pm, 2:30pm–4pm

**Room:** Mandela Hall

### MATHEMATICAL AND PHYSICAL SCIENCES

#### INFLATABLE PLANETARIUM

Visit our inflatable planetarium, where you'll learn how physicists at Sussex are using the most powerful telescopes on Earth and in space to answer the big questions about our Universe.

**Category:** Participatory

**Target age group:** 13+

**Duration:** Drop in sessions between 11:30am–1:30pm, 2:30pm–4pm

**Room:** Mandela Hall

## Meeting House

### PSYCHOLOGY

#### READING TO CHILDREN

Hear about the importance of storybooks for young children, and pick up practical tips on how parents can make the most of story time.

**Category:** Talk/Q&A

**Target age group:** 18+

**Duration:** 1 hour

Session 1 – 11.30am–12.30pm

Session 2 – 12.30pm–1.30pm

Session 3 – 2.30pm–3.30pm

**Room:** Meeting House



# Brighton and Sussex Medical School (BSMS)

## BRIGHTON AND SUSSEX MEDICAL SCHOOL

### TEDDY BEAR HOSPITAL

Is your teddy poorly? If so, bring them along to meet the doctor and the rest of the healthcare team at our teddy bear hospital. Learn about your own body as the doctor helps your teddy.

**Category:** Participatory

**Target age group:** Young children

**Duration:** Drop in sessions between 11:30am–1:30pm, 2:30pm–4pm

**Room:** BSMS (foyer)

### EXPLORE THE BODY

Find out about our weird and wonderful bodies and how they function, then create your own t-shirt complete with internal organs.

**Category:** Participatory

**Target age group:** 5+

**Duration:** Drop in sessions between 11:30am–1:30pm, 2:30pm–4pm

**Room:** BSMS (foyer)

### ORGANS – THE GOOD, THE BAD AND THE UGLY

Do you actually know where your all internal organs live? Find out with our special organ tunic!

You can also make your own germs, and practice being a real doctor using a stethoscope.

**Category:** Participatory

**Target age group:** 13+

**Duration:** Drop in sessions between 11:30am–1:30pm, 2:30pm–4pm

**Room:** BSMS (foyer)

### TIME FOR DEMENTIA

An ageing population is creating different demands on our health system. Come and learn about 'Time for Dementia', an award-winning initiative that is helping to prepare future doctors for the challenges ahead.

**Category:** Talk

**Target age group:** All ages

**Duration:** 30 minutes

Session 1 – 11.30am–12.30pm

Session 2 – 12.30pm–1.30pm

Session 3 – 2.30pm–3.30pm

**Room:** BSMS (Chowen lecture theatre)

### LIFE SCIENCES

#### HONEY BEE OBSERVATION HIVE

Did you know bees can dance? Watch a live feed from our honeybee hive, and meet the researchers who are working to better understand and protect these essential insects.

**Category:** Tour

**Target age group:** All ages

**Duration:** 30 minutes

Session 1 – 11.30am–12.30pm

Session 2 – 12.30pm–1.30pm

Session 3 – 2.30pm–3.30pm

**Room:** Life Sciences will provide someone to escort groups from the designated meeting point in BSMS then take guests to the guided tour of the labs.



# Moroccan Tent

## GLOBAL STUDIES

### BODY MAPPING WITH PROFESSOR ANDREA CORNWALL

This workshop explores our experiences of living in our bodies.

Using large sheets of paper, visitors will be able to draw their own body and use this as a starting point for a discussion about how people in different cultures understand their bodies.

**Category:** Participatory

**Target age group:** 13+

**Duration:** 1 hour

Session 1 – 11.30am–12.30pm

**Room:** Moroccan Tent will be pitched on the grass at the back of Arts C.

### HOW DO WE KNOW, THINK AND LEARN?

Join us to explore alternative methods of thinking and learning through film and clay modelling.

**Category:** Participatory

**Target age group:** All ages

**Duration:** 1 hour

Session 2 – 12.30pm–1.30pm

**Room:** Moroccan Tent will be pitched on the grass at the back of Arts C.

### PLAYING YOUR WAY OUT OF TROUBLE

Find out how playing games can help farmers and governments to predict climate hazards.

Test your problem solving abilities with one of our challenges, then see if you can design your own game.

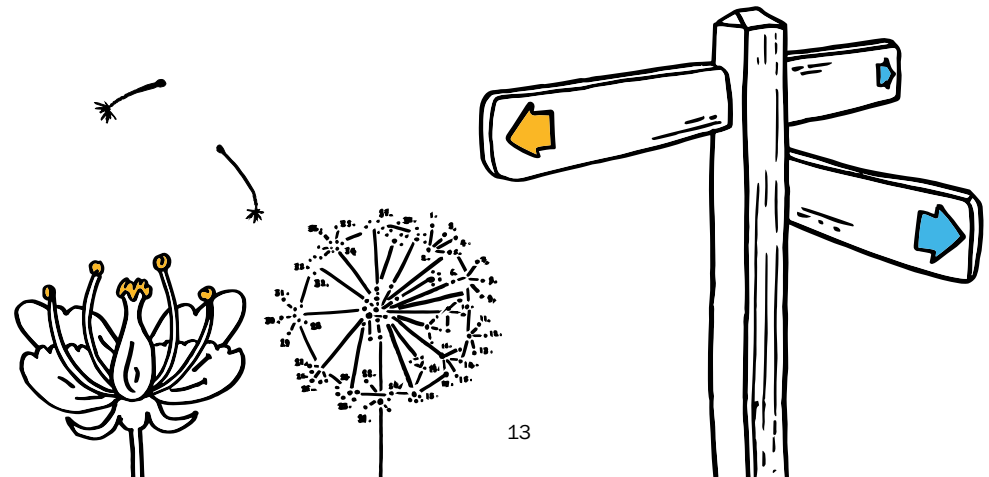
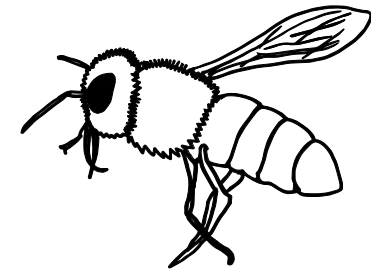
**Category:** Participatory

**Target age group:** 12+

**Duration:** 1 hour

Session 3 – 2.30pm–3.30pm

**Room:** Moroccan Tent will be pitched on the grass at the back of Arts C.





## Sports Centre

### INDOOR

| LOCATION      | SESSION 1<br>11.30am–12.30pm | SESSION 2<br>12.30pm–1.30pm | SESSION 3<br>2.30pm–3.30pm | CAPACITY |
|---------------|------------------------------|-----------------------------|----------------------------|----------|
| Hall 2        | Tag Archery                  | Tag Archery                 | Tag Archery                | 16       |
| Dance Studio  | Aerial Yoga / Trapeze        | Aerial Yoga / Trapeze       | Aerial Yoga / Trapeze      | 8        |
| Squash Courts | Squash / Racketball          | Squash / Racketball         | Squash / Racketball        | 16       |
| Gym           | Circuits class (GM)          | Spin class (GM)             | Circuit class              | 18       |

### OUTDOOR

| LOCATION        | SESSION 1<br>11.30am–12.30pm | SESSION 2<br>12.30pm–1.30pm | SESSION 3<br>2.30pm–3.30pm | CAPACITY |
|-----------------|------------------------------|-----------------------------|----------------------------|----------|
| Russells Clump  | Frisbee                      | Frisbee                     | Frisbee                    | 20       |
| Front of SC     | Zumba /<br>Bouncedance (GC)  | Zumba /<br>Bouncedance (GC) | PIYO (GM)                  | 20       |
| ACCA grass area | Volleyball                   | Volleyball                  | Volleyball                 | 16       |



## Library Square

### BOUNDARY WALK

Join us on a walk around the University's boundary, passing through ancient trees, undulating hills and flower-rich meadowland.

The circular walk is about 3.2 kilometres and will suit anyone of average fitness. We will take 2 hours over the route, and walkers are advised to wear strong shoes and dress equal to the weather. We recommend that participants bring a bottle of water with them.

**Category:** Ecological education walk

**Target age group:** All ages

**Duration:** 2 hours, 1.30pm–3.30pm

**Room:** Meeting point at the Marquee in Library Square to walk on the South Downs

### TOUR OF THE CAMPUS

**Category:** Campus tour

**Target age group:** All ages

**Duration:** 1 hour

Session 1 – 11.30am–12.30pm

Session 2 – 12.30 pm–1.30 pm

Session 3 – 2.30pm–3.30 pm

**Room:** Library Square

### SUSSEX IN THE COMMUNITY TALK

Hear more about the history of the University, our outreach programmes and our plans for developing our campus.

**Category:** Talk

**Target age group:** All ages

**Duration:** Drop in sessions between 11:30am–1:30pm, 2:30pm–4pm

**Room:** Library Square

### CIRCUS SKILLS

Diabolos, juggling, poi spinning, hooping, plate spinning and pedal racer balance.

**Category:** Participatory

**Target age group:** Children

**Duration:** Drop in 11:00am–4pm

**Room:** Library Square

### SUSSEX IN THE COMMUNITY

Find out more about all the work we do in the community and how to get involved.

**Category:** Information, general chat

**Target age group:** All ages

**Duration:** Drop in 11:00am–4pm

**Room:** Library Square



# Help and Information

Our friendly staff members will be available at Welcome Stations and around the University campus. Please ask one of them if you need help, directions or information.

## FIRST AID

If you require an ambulance, please dial 3333 from any internal phone (this will connect you to security staff, who will direct the ambulance on arrival) or please speak to a member of staff. If you are calling from a mobile you will need to dial 01273 873333.

## FIRE ALARMS

All buildings on campus have smoke and fire alarms. If you hear a continuous alarm bell, please evacuate the buildings by the nearest exit and move away from the area. Please follow any directions given by members of staff.

## PARKING

Car parking is free on campus for the Sussex Community Festival. Designated parking is available for Blue Badge holders.

## LOST CHILDREN

Please keep your children with you at all times and don't leave them unattended during activities. Wristbands for children will be available at the welcome marquee – parents and guardians can write their contact details on these. If you do become separated from your family and need help to find them, please talk to a member of staff. When collecting a wristband for your child if you have a mobile telephone with a camera please take a photograph of your child so that if required you can easily let security know what they are wearing should they get lost.

## TOILETS AND BABY CHANGING FACILITIES

Toilets (including accessible toilets) are located in each building on campus.

## NURSING AREA

This can be found in the welcome marquee in Library Square.

## CASH MACHINES

Free cash machines (Barclays) are located at Sussex House.

## SMOKING ON CAMPUS

Smoking (including e-cigarettes and vapes) is not allowed in all University buildings.

## DOGS

Dogs are not permitted in University buildings or on University grounds.

The only exceptions to this are assistance or working dogs.

## FILMING AND PHOTOGRAPHY

Filming and photography will take place throughout the day for use in University of Sussex communications and (with your permission) for media coverage of the event.

## LOST PROPERTY

If you find any lost property, please hand it to a member of staff. All lost property will be held at the welcome points. If, after your visit, you think you have lost something, please contact us at [events@sussex.ac.uk](mailto:events@sussex.ac.uk).

## FOOD AND DRINK

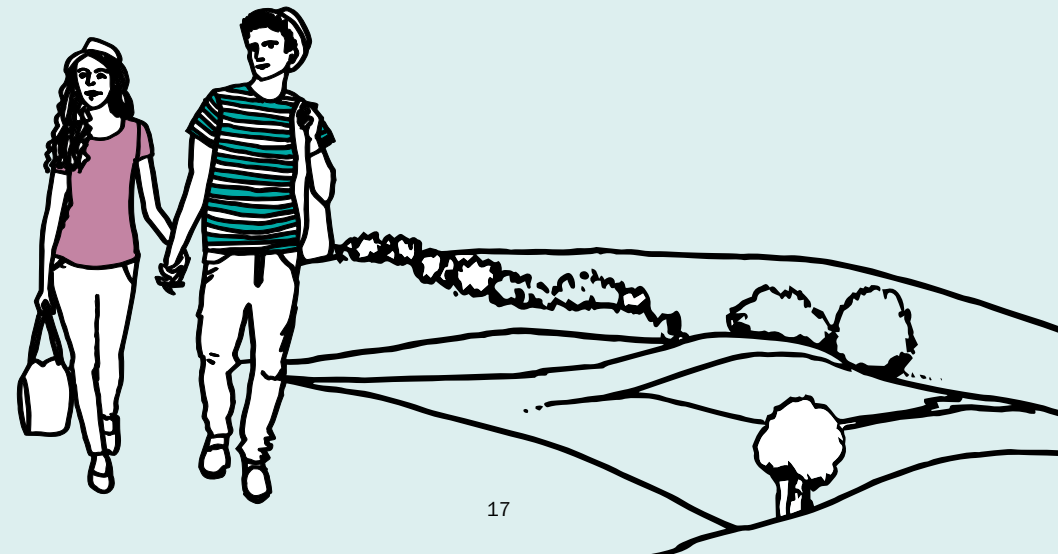
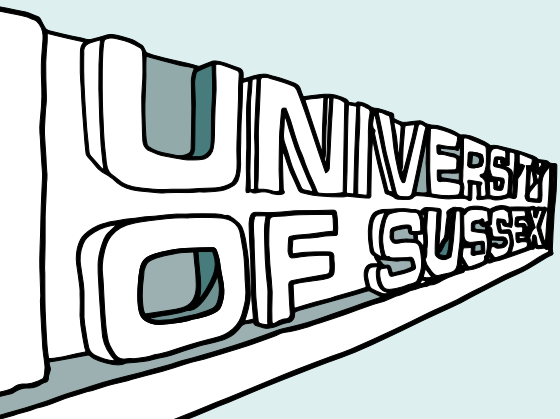
There are a variety of food and drink stalls located in Falmer Quad as well as University run cafés on campus.

Cafés are located in the following areas:

- Attenborough Centre for Creative Arts
- Arts Café
- Bramber House
- Doctor's Orders in BSMS

## PICNICS

You are welcome to bring a picnic to campus.



## CONTACT US

Development & Alumni Relations Office  
Sussex House, University of Sussex  
Falmer, Brighton BN1 9RH, UK

+44 (0)1273 678258  
events@sussex.ac.uk

**[www.sussex.ac.uk](http://www.sussex.ac.uk)**